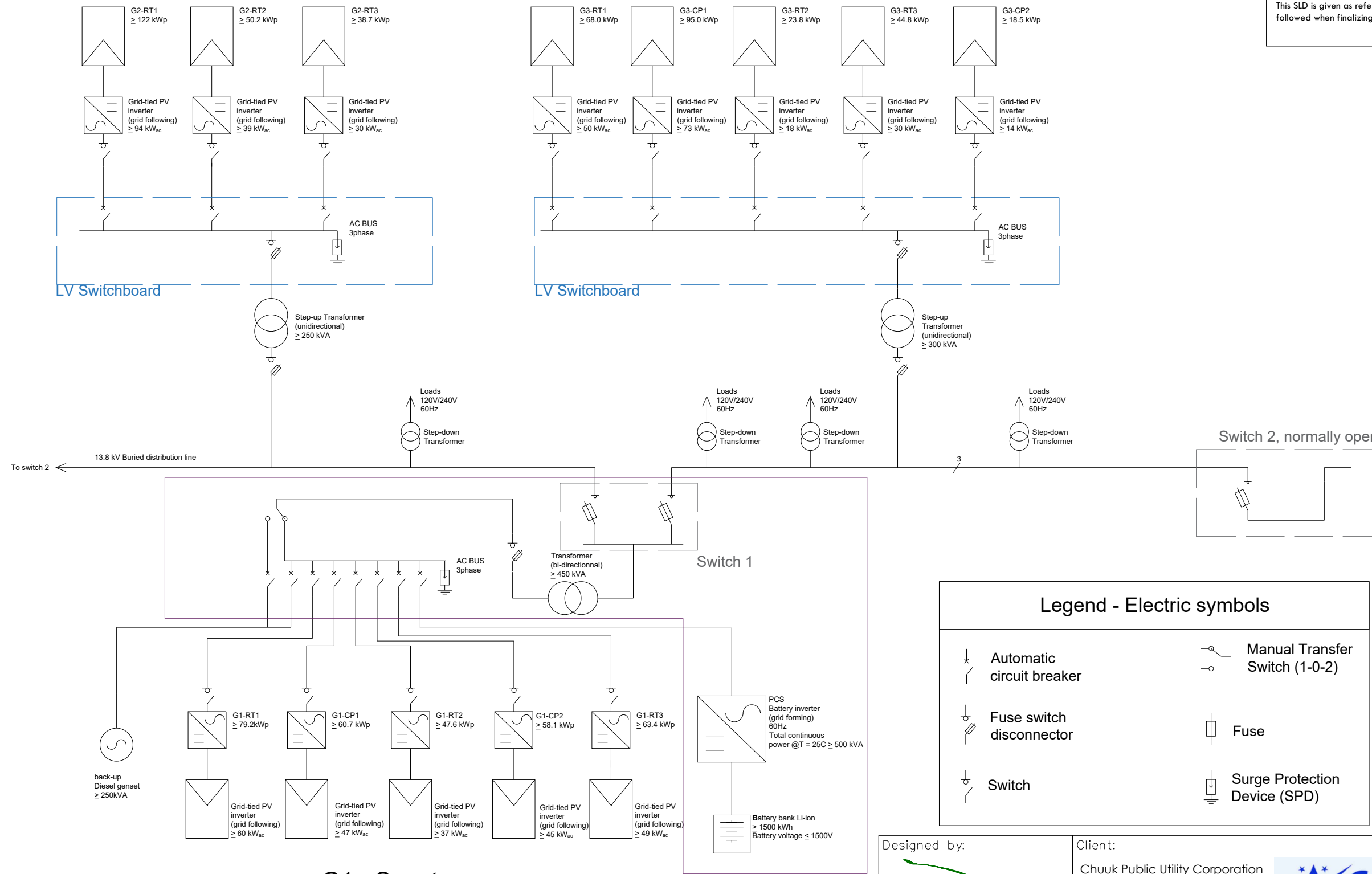


Version	Date	Description	Draw.	Rev.	Appr.
V-1.1	12/04/23		LM		

**Notes:**  
This SLD is given as reference for the tender documents. The NEC standard must be followed when finalizing the design

**G2 - Fein**  
≥ 210.9 kWp  
≥ 162 kW

**G3 - Mesa**  
≥ 250.1 kWp  
≥ 186 kW



**G1 - Sapota**  
≥ 309.0 kWp / ≥ 237kW

**Legend - Electric symbols**

	Automatic circuit breaker		Manual Transfer Switch (1-0-2)
	Fuse switch disconnecter		Fuse
	Switch		Surge Protection Device (SPD)

Designed by:  Av.Meridiana, 153 P.Baja 08026 Barcelona-España Tel. (+34)93 446 3234	Client: Chuuk Public Utility Corporation (CPUC) 	Location: <b>Fefen, Chuuk</b>
Approval:	Project: <b>Consultancy Services for the Design of Solar Powered Mini-grid in Fefen Island, Chuuk State</b>	Set of Drawings: <b>Drawing Set</b>
Engineer:	Drawing name: <b>Single line diagram</b>	Scale: <b>N</b>
	Drawing number: <b>#</b>	Paper: DIN A3