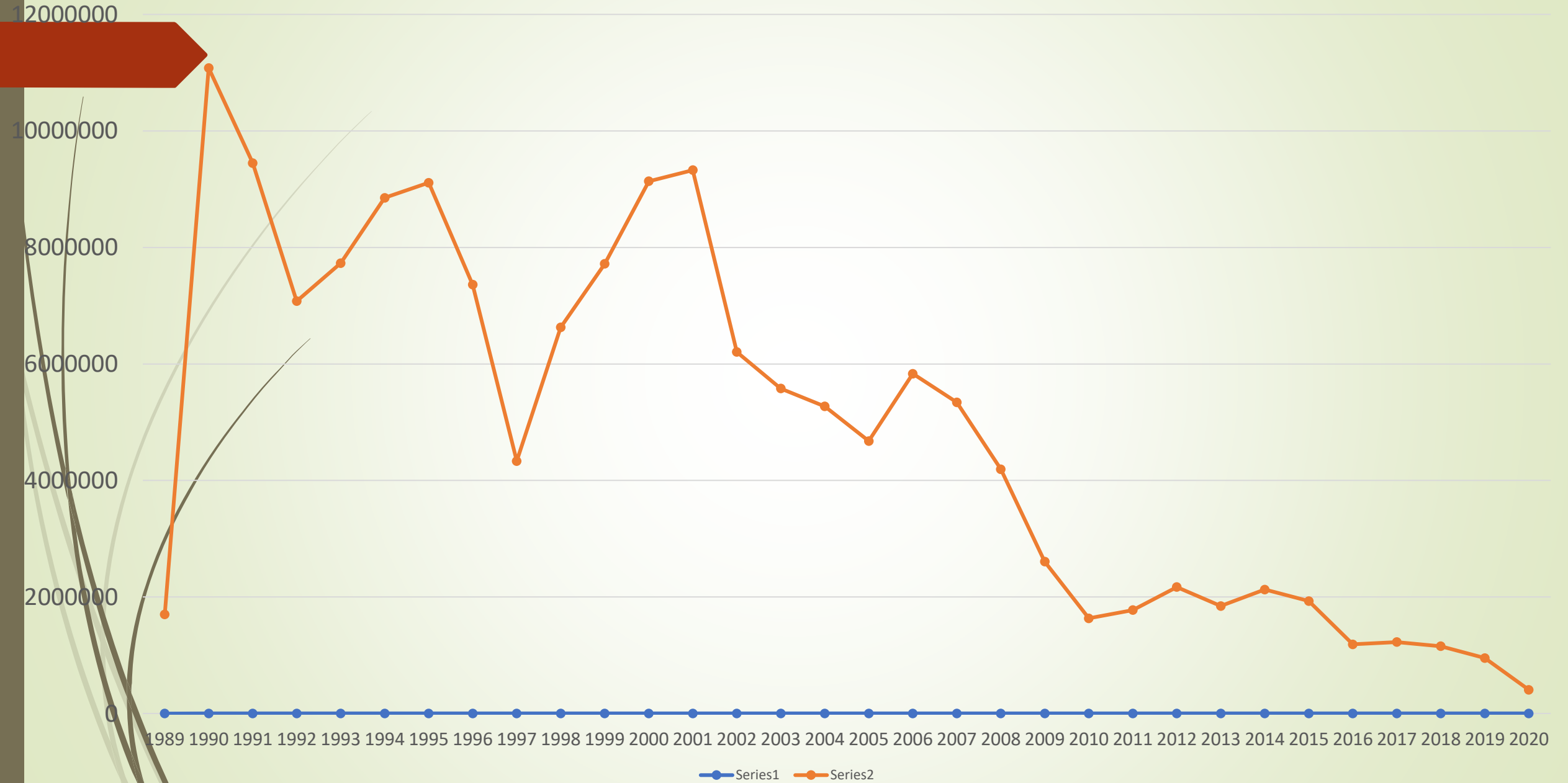
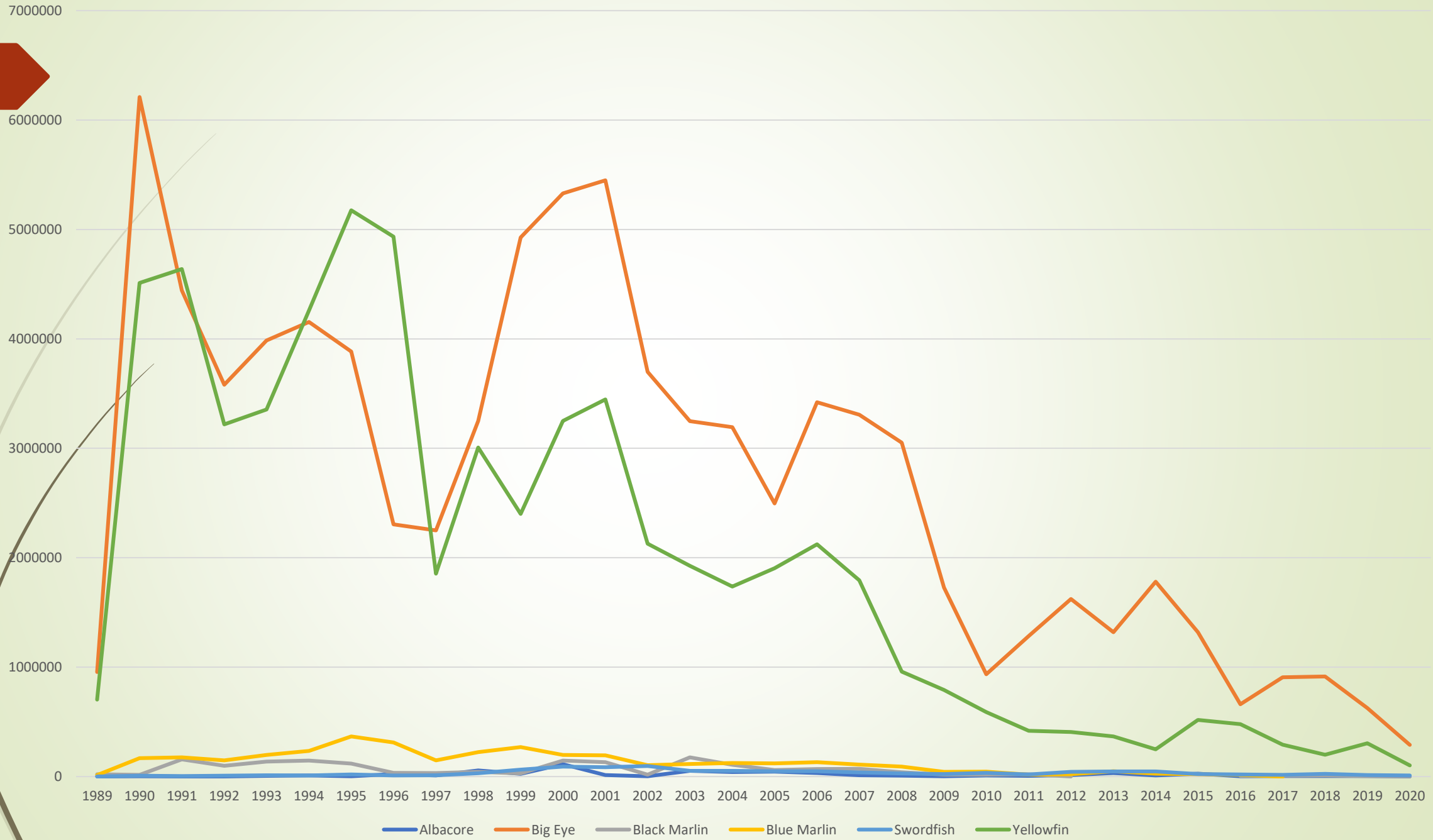


# Transshipments in Kgs.



# Species Totals



Prior to 1980s, coral bleaching occurred every 10-20 years

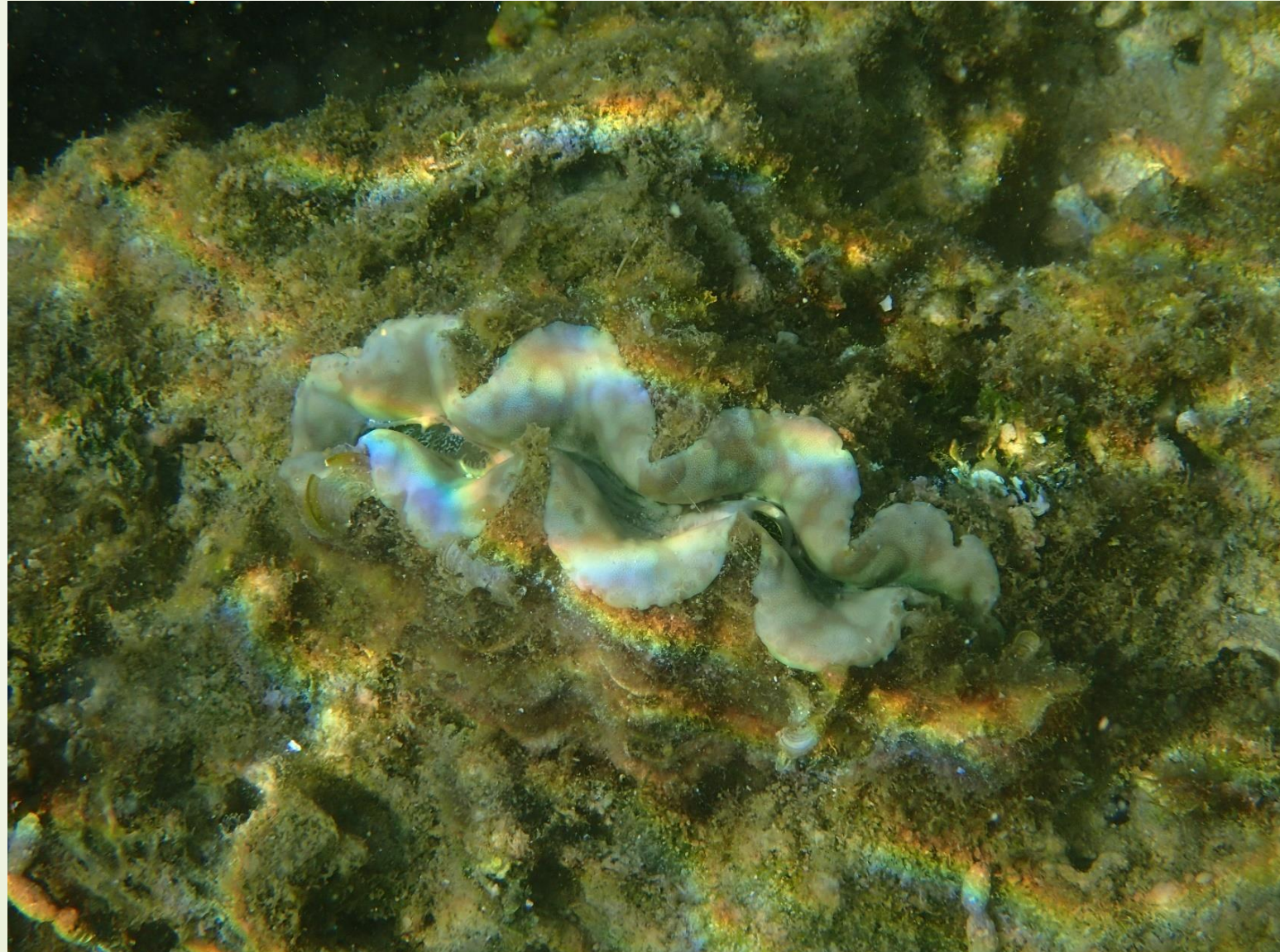
- 1994- mild bleaching event
- 1997-98- mild bleaching event
- 2006-7- mild bleaching of Acropora corals
- 2013-2017- severe bleaching in 4 of 5 years

# Aerial Bleaching survey 2013



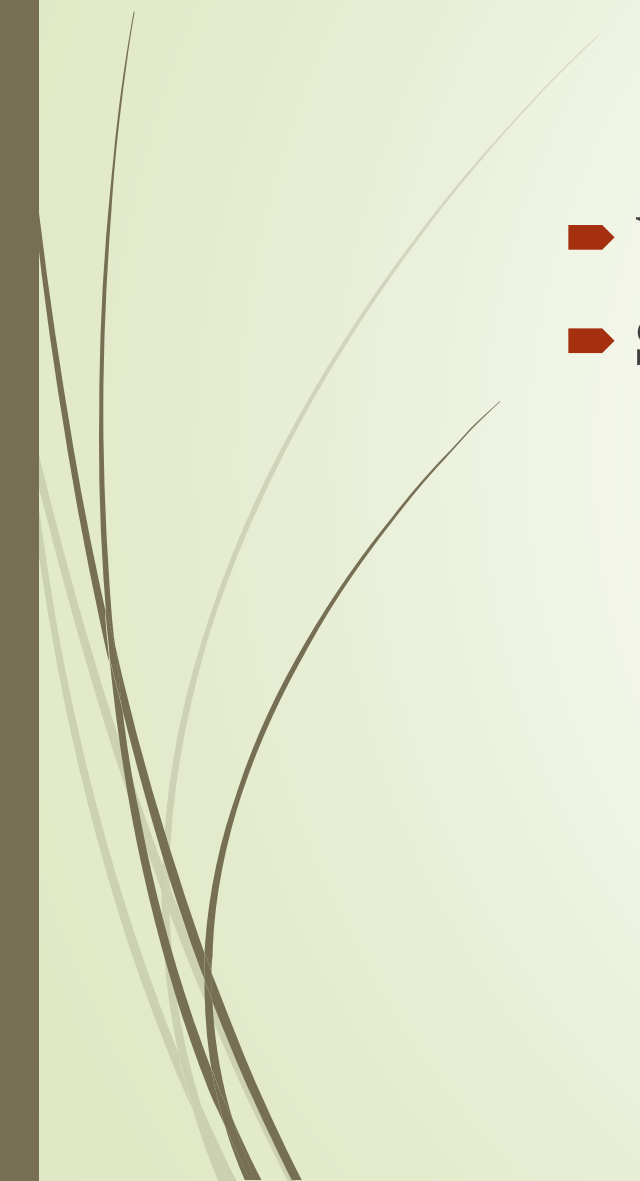
2013/09/27

# Tridacna clam- Agat 2016





# El Nino- La Nina intensities

- ▶ **Very strong El Nino- 1982, 1997-8, 2015-16**
  - ▶ **Strong La Nina- 88-89, 98-99, 99-00, 07-08, 10-11**
- 

# Bottom fishing CPUE, per trip and per gear/hour

