



Pacific
Community
Communauté
du Pacifique

Implementing The Pacific Community Strategic Plan 2022-2031

Director, Strategy Performance & Learning

- GOAL 1** All Pacific people benefit from sustainable development.
- GOAL 2** All Pacific communities and cultures are empowered and resilient.
- GOAL 3** All Pacific people reach their full potential and live long and healthy lives.
- GOAL 4** One SPC delivers integrated programmes through streamlined services.

We are a values led organisation

Enginkehlap



Generosity

Kaitiakitanga



Stewardship

Gida Gaituvwa



Unity

Aroha



Care

Five pathways guide the high-level actions towards our goals across SPC's seven key focus areas

- Policy to action
- Data, statistics and knowledge
- Innovation and research
- Digitalisation and technology
- Capability and influence



KFA 1
Resilience and climate action



KFA 2
Natural resources and biodiversity



KFA 3
Food systems



KFA 4
Equity, education and social development



KFA 5
Sustainable economies and livelihoods



KFA 6
Planetary health



KFA 7
Transforming institutional effectiveness

Pacific people are thriving, with enhanced resilience from better informed decision making and necessary resources that also enable the achievement of low carbon, climate resilient sustainable development.

Thriving, productive and resilient ecosystems and communities, responsibly harnessing our natural resources and biodiversity for security and prosperity.

Pacific food systems are accessible, regenerative, biodiverse, equitable and resilient to shocks. They provide access to safe and nutritious food and contribute to healthy people, ecosystems, vibrant cultures and prosperity for all.

Social development systems result in real gains for education, gender equality and social inclusion through a contextualised approach to human rights and good governance that incorporates Pacific cultures and ways of knowing.

The Blue Pacific is a well-being economy through a balance of sustainable economic growth, protection and inclusive distribution of resources, energy-secure, healthy and resilient communities with livelihoods sustained through trade, maritime connectivity and harmonious relationships with the land and the sea.

Collaboration and stewardship of our Blue Pacific for healthy islands; where children and vulnerable groups are nurtured in body and mind; environments invite healthy lifestyles learning and leisure; people work and age with dignity; ecological balance is a source of pride; people maintain their cultures and traditions with the land; water and oceans are protected.

One SPC is values-based and working with members and partners to provide coherent, social and environmental responsible learning for enhanced representation of Pacific peoples and gender equality across the organisation and at all levels of decision making.

2050
Blue Pacific
Strategy



National
Sustainable
Development
Priorities

**STRATEGIC
PLAN
2022-2031**

7 Key Focus Areas
3, 5, 8-year review
horizons



FUTURE STATE 2031

Strategic
Results
Framework

Divisional
Results
Framework

CRGA
CRGA Sub-
Committee for
the Strategic
Plan

Ministerial and
Official
meetings

Senior
Leadership
Team
Senior
Management
teams

Climate
Change
Flagship

Food
Systems
Flagship

Gender Equality
& Women
Empowerment
Flagship

Oceans
Flagship

HRSD

GEM

LRD

EQAP

FAME

PHD

SDD

OMD

CCES

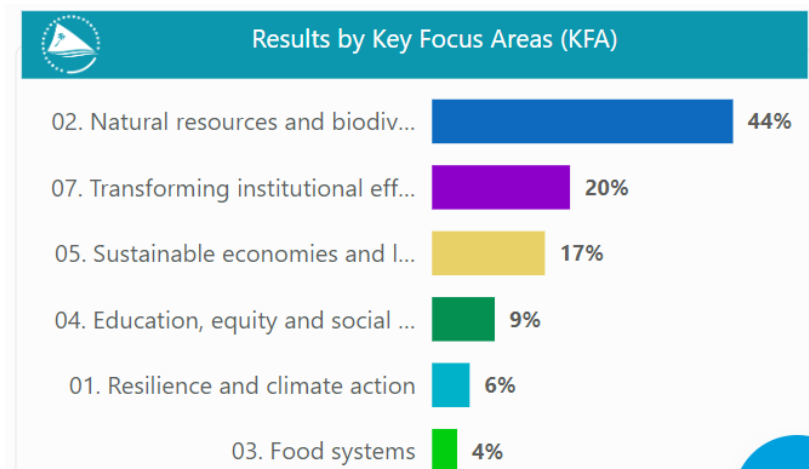
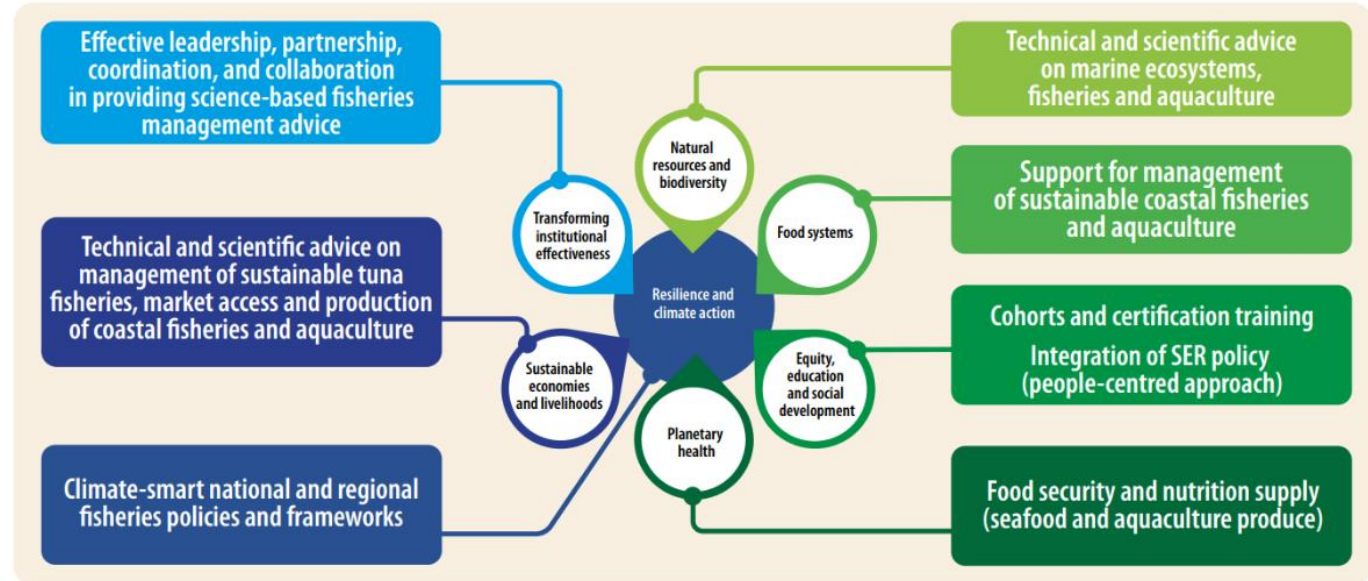
Business Plans

Annual Work Planning

Division

Programme/Project

Individual



Flagship progress

Climate change



Coral Pasisi
Anne Claire Goarant
Aude Chenet
Liya Perepada

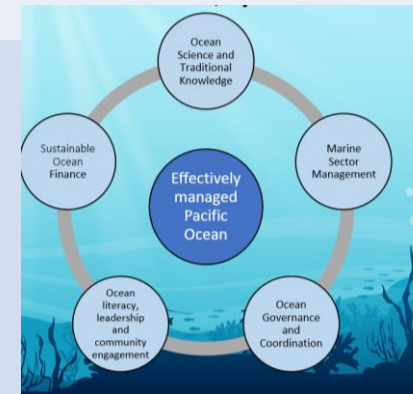
Food systems



Alisi Tuqa
Neville Smith
Tim Pickering
Karen Mapusua

Pacific peoples voyaging together to steward a healthy, resilient, sustainable and prosperous Blue Pacific for future generations.

Oceans



Jerome Aucan
Katy Soapi
Pierre-Yves Charpentier
Jens Kruger



Gender equality



Mereseini Rakuita
Julie Bukikun
Tara Chetty
Vuki Buadromo

What is the purpose of flagships ?

“Significant/scalable programmes for the key areas of SPC’s cross-cutting work. They bring together and connect capabilities and resources – the projects, funding, and people – from across the organisation to achieve collective impact (to address regional challenges and opportunities) in the key thematic focus areas in the strategic plan”

“push the boundaries”
“experiment/pilot”
“vehicle for collaboration”
“innovate & futures thinking”
“risk tolerance vs risk-averse”
“be agile, pivot”

What do they do?



- **Amplified Impact** The flagship programmes embody SPC's commitment to addressing the most pressing challenges facing our Pacific members in the areas of climate change, gender, food systems, and oceans.
- **Leveraging Expertise** By linking expertise from across SPC, the flagship programmes harness the collective knowledge and resources of the organisation to deliver greater impact through more coordinated approaches .
- **Regional and Global Collaboration:** The flagship programmes enhance our regional and global collaboration and mobilise resources

Contributing to the 2050 Implementation Plan

