



# Pacific Islands Regional Oceanscape Program (PROP)

## SPC PROP Concept

NOUMEA | APRIL 2024



## Pacific Islands Regional Oceanscape Program (PROP)

- Multi-country, multi-phase program
- Modular approach
- Long-term
- **Blue Economy approach:** based on current demand focus on oceanic fisheries, coastal fisheries, critical fisheries ecosystems; potential to expand to multi-sector regional and national investment as per countries' demand.

## Key elements of SPC PROP Project

**Program Development Objective** is to strengthen the shared management of selected Pacific Island oceanic and coastal fisheries, and the critical habitats upon which they depend.

**Project Development Objective** is to strengthen regional capacity for the management and sustainable development of fisheries and aquaculture, and protection of marine ecosystems upon which they depend in selected Pacific Island countries.

**Target countries** include Federated States of Micronesia, Fiji, Kiribati, the Republic of the Marshall Islands, Nauru, Palau, Papua New Guinea, Samoa, Solomon Islands, Tonga, Tuvalu, and Vanuatu. (Based on World Bank financing eligibility)

**Duration:** 5 years.

**Total budget:** US\$ 15 million with potential additional financing in coming years.

# SPC PROP Project Components

## Component 1: Strengthening Regional Capacity and Knowledge Systems

- 1.1: Developing regional capacity in data analysis and assessment
- 1.2: Enhancing the national fisheries workforce

## Component 2: Strengthening Regional Collaboration and Capacity for Oceanic Fisheries

- 2.1: Enhancing regional and national knowledge systems
- 2.2: Delivering national electronic monitoring and electronic reporting capability consistent with regional policies (tbc)
- 2.3: Mitigating environmental impacts of drifting Fish Aggregating Devices in the WCPO (tbc)

## Component 3: Strengthening Regional Collaboration and Capacity for Coastal Fisheries and Aquaculture

- 3.1: Capacity building and training to strengthen and expand monitoring for coastal fisheries
- 3.2: Supporting the scaling-up of community-based fisheries management (CBFM)
- 3.3: Identify, develop, and diversify sustainable livelihood options for coastal communities to contribute to management, sustainable development and food security
- 3.4: Strengthening regional aquaculture capacity

## Component 4: Project Management

# Interface of financing through SPC PROP and national PROP projects

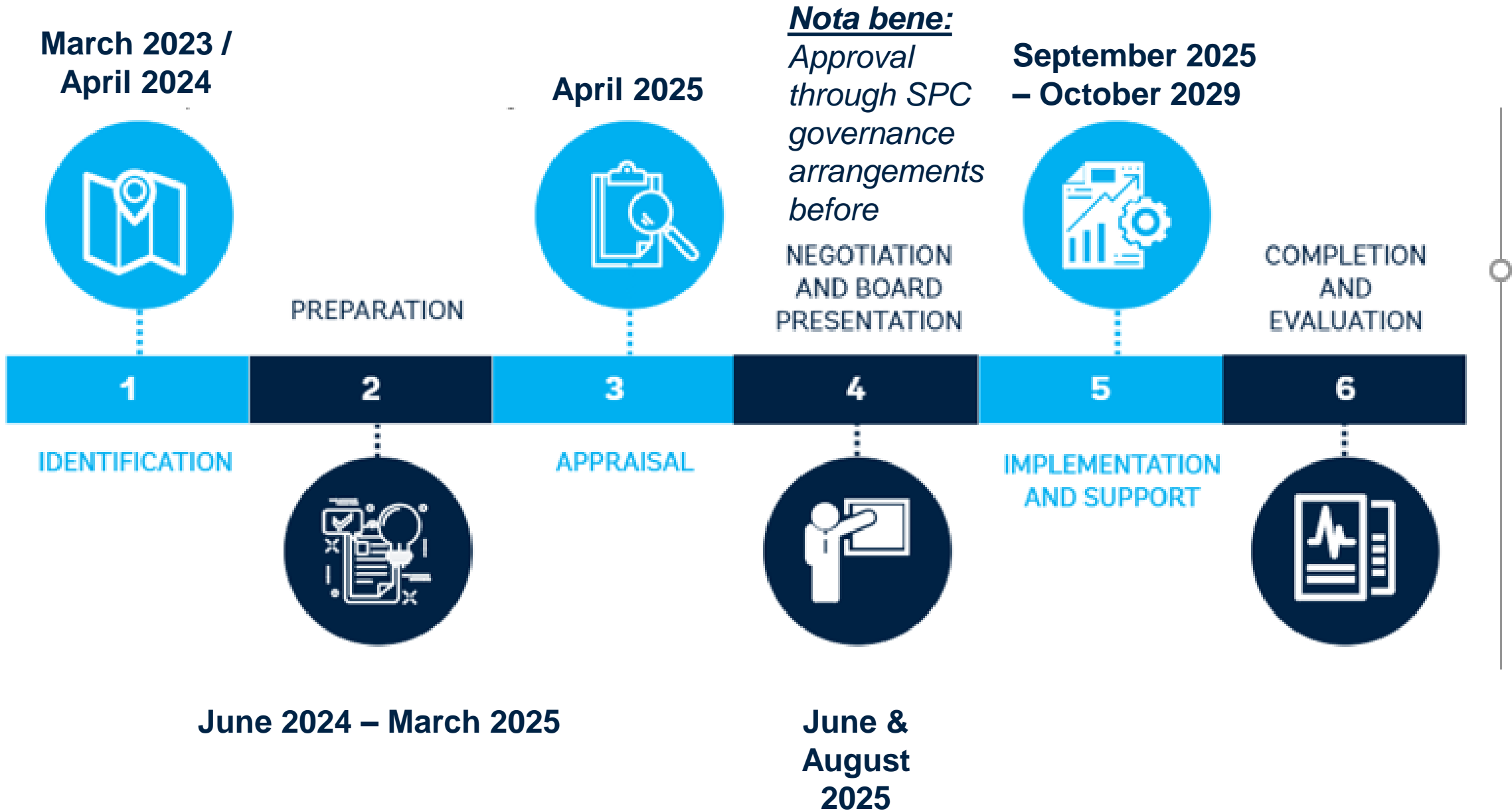
## What is financed under the SPC PROP project: *\*examples – not exhaustive*

- **Development of regional data tools/applications** for oceanic and coastal fisheries
- **Data analysis and dissemination at regional level**
- **Regional training workshops and courses** for national fisheries staff
- **Attachments to SPC** for national fisheries staff
- **Train-the-trainers and peer to peer exchanges** between countries
- **Technical Assistance services** to national fisheries administration

## What is financed under national projects:

- **Operating cost of data collection** (e.g., deployment of enumerators, operating cost of fisheries staff, cloud service cost, etc. )
- **Cost of equipment for data collection and analysis** (e.g. tablets)
- **Development of policy, regulations, related studies...**
- **Implementation cost of oceanic fisheries programs** (e.g., MCS, ER, EM)
- **Implementation cost of coastal fisheries programs** (e.g. CBFM outreach and extension services, aFAD construction, deployment, and monitoring, etc.)
- **Implementation of aquaculture programs** (e.g., hatchery and feed mill operation, implementation of restorative and market-oriented aquaculture)
- **Investments in infrastructure** (e.g., fisheries administration buildings, fish markets, public jetties, etc.)

# Project Cycle



Thank you

