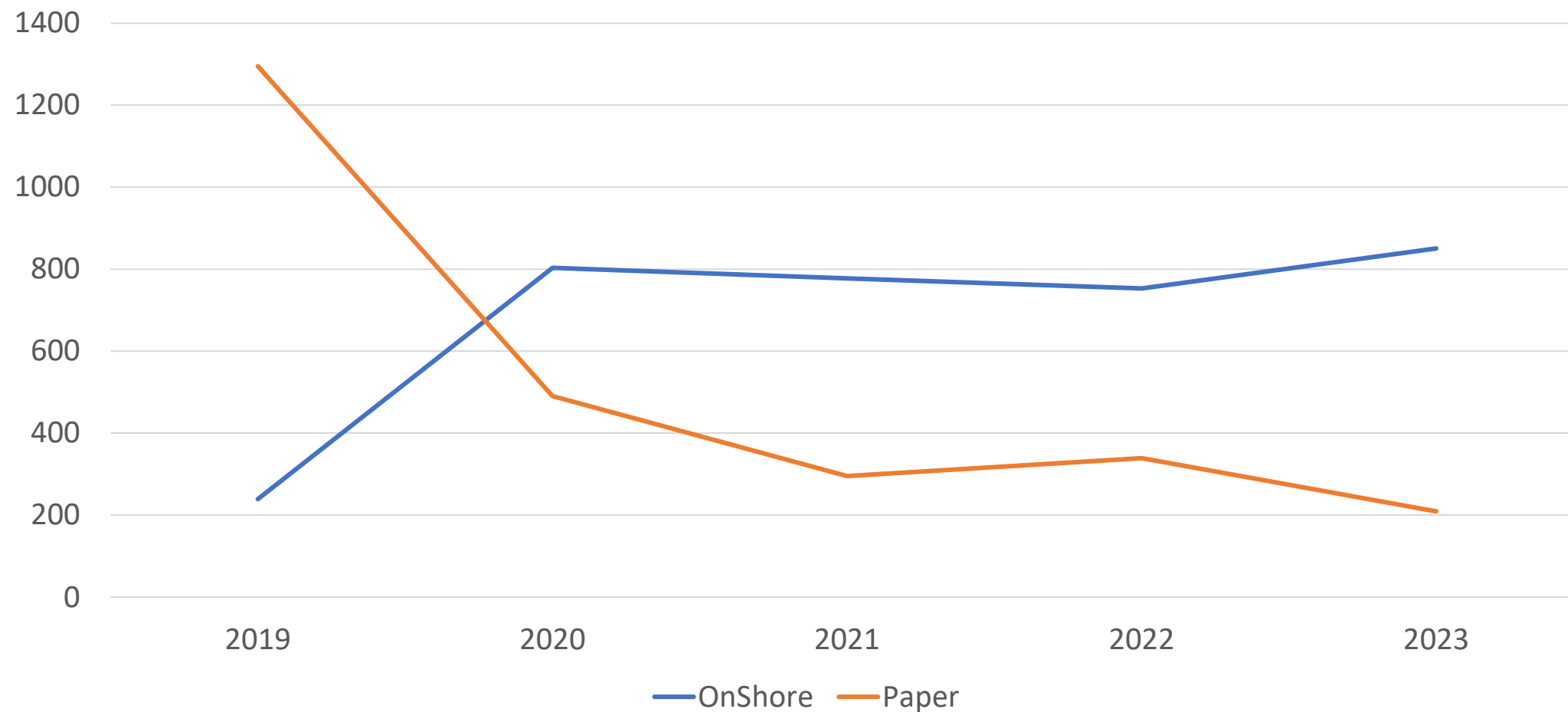


ER opportunities 2024

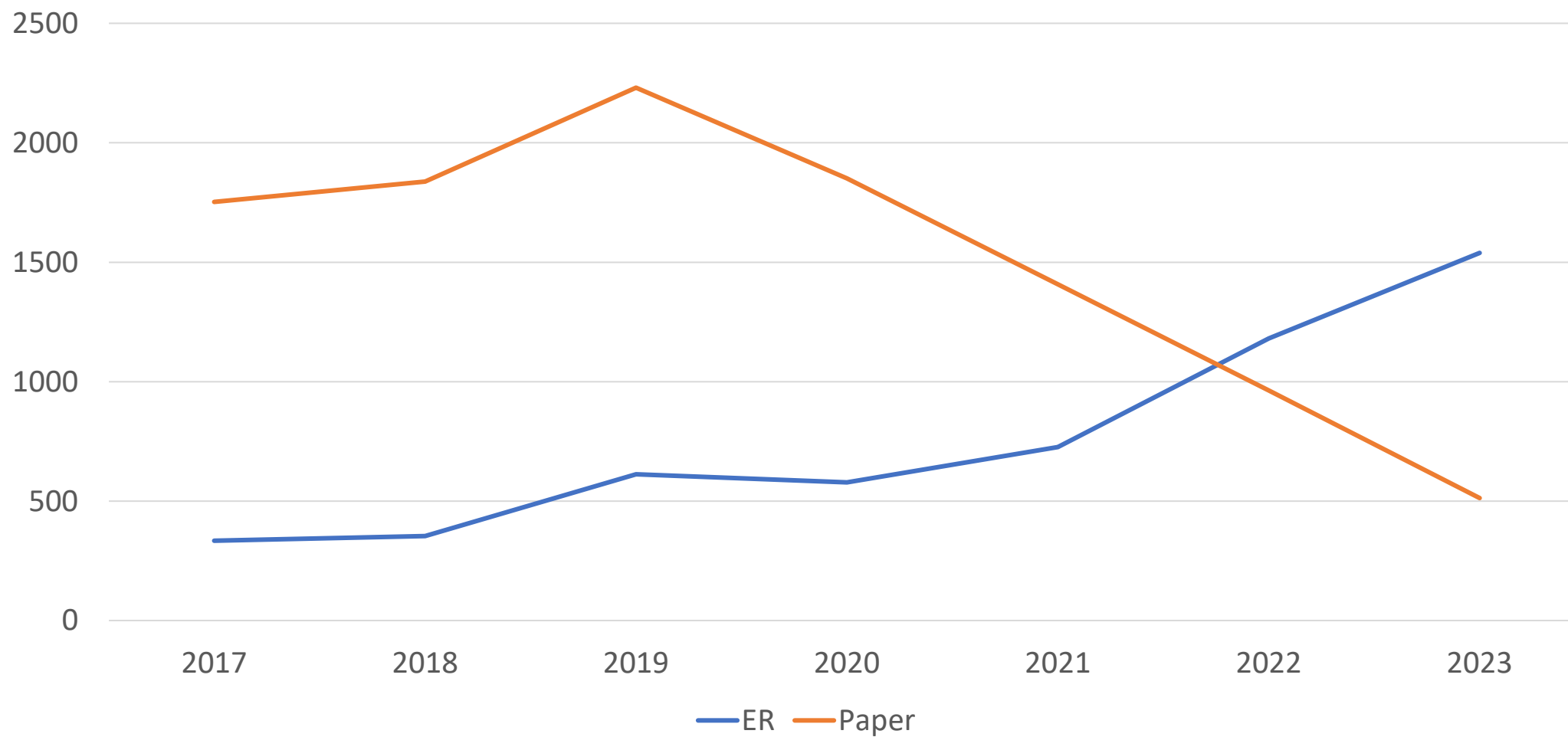
TDW 18
9th April 2024



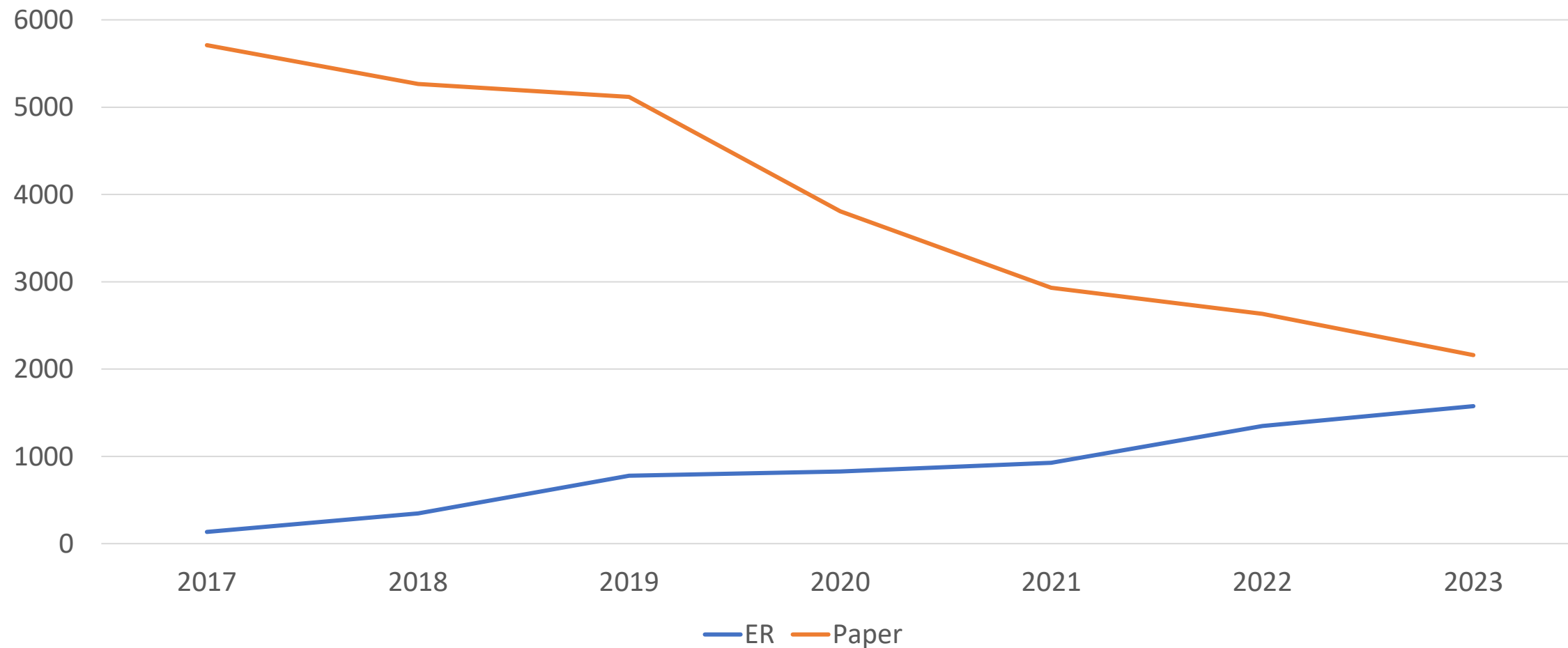
Port sampling submission to TUFMAN2

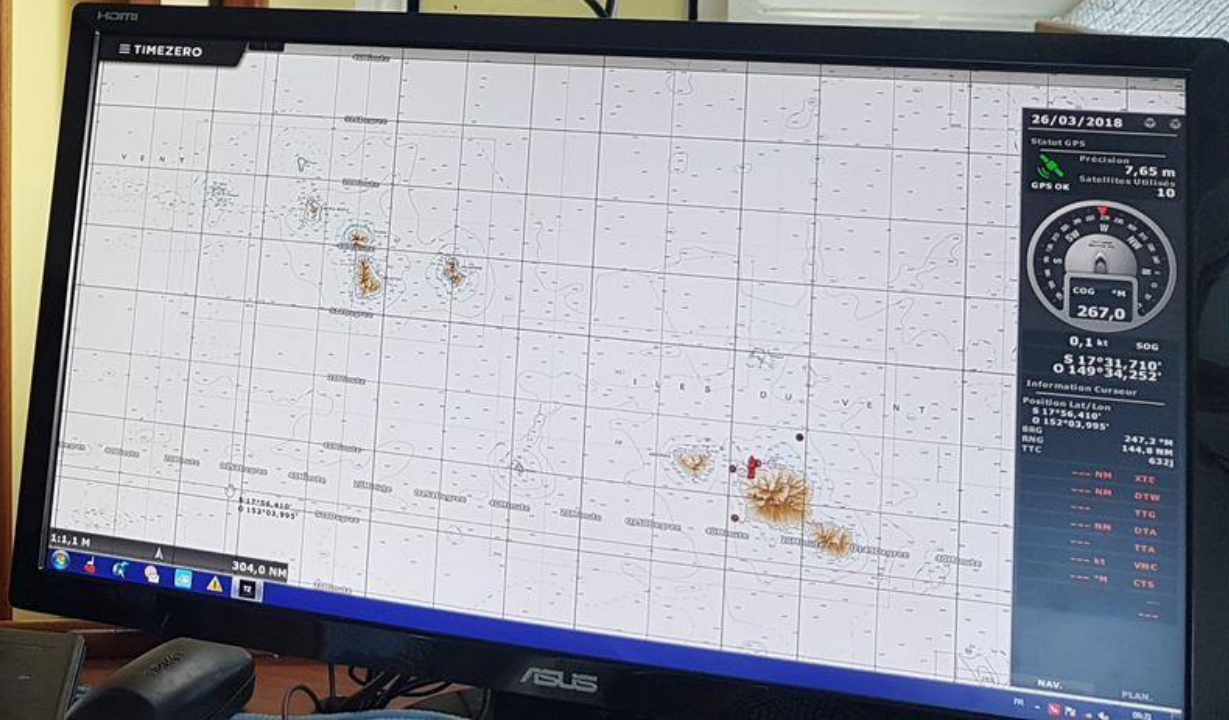


Purse seine logsheets submission to TUFMAN2



Longline logsheets submission to TUFMAN2



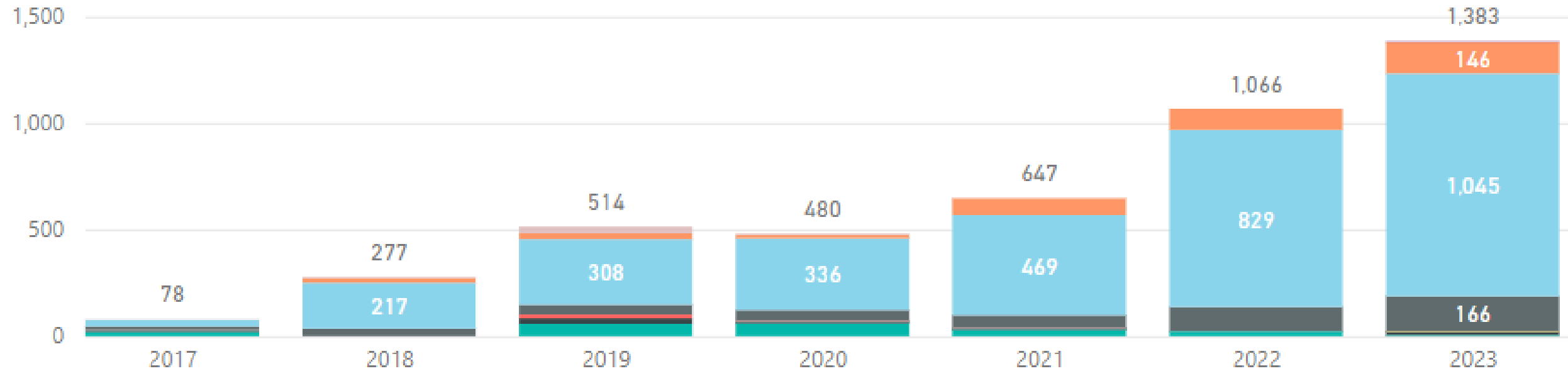


OnBoard

DATA ENTRY APPLICATION

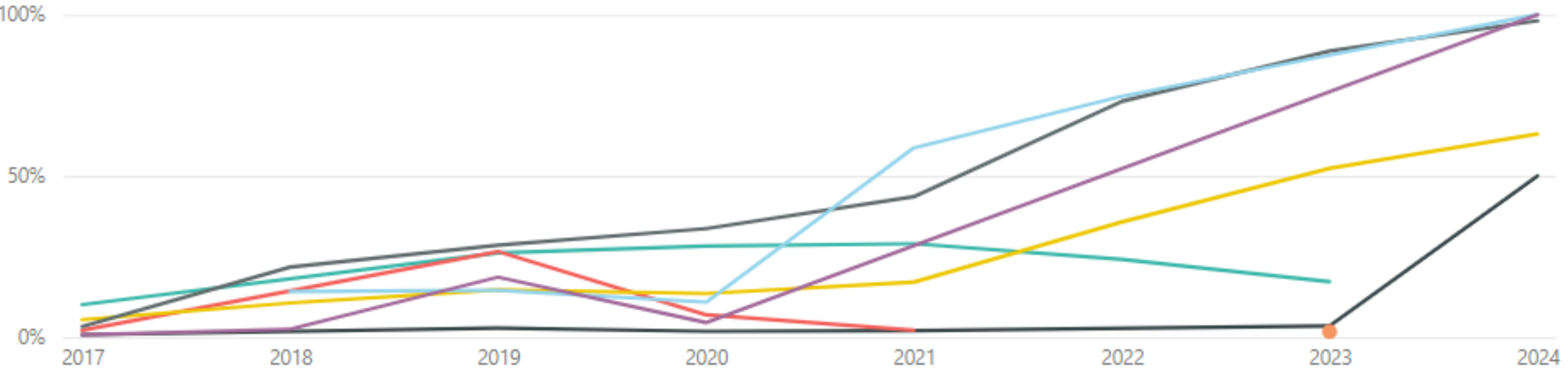
Logs LL - Nbr Trips by Year and Instance Source

Instance Source CK FJ FM KI NC PF TO VU WF WS



Logs LL - % Trips ONBOARD by Year and Instance Source

Instance Source CK FJ FM NC PF TO VU WS



Not only OnBoard

Longline Logsheet JSON Standard

Data fields description and data transmission procedures

[View on GitHub](#)

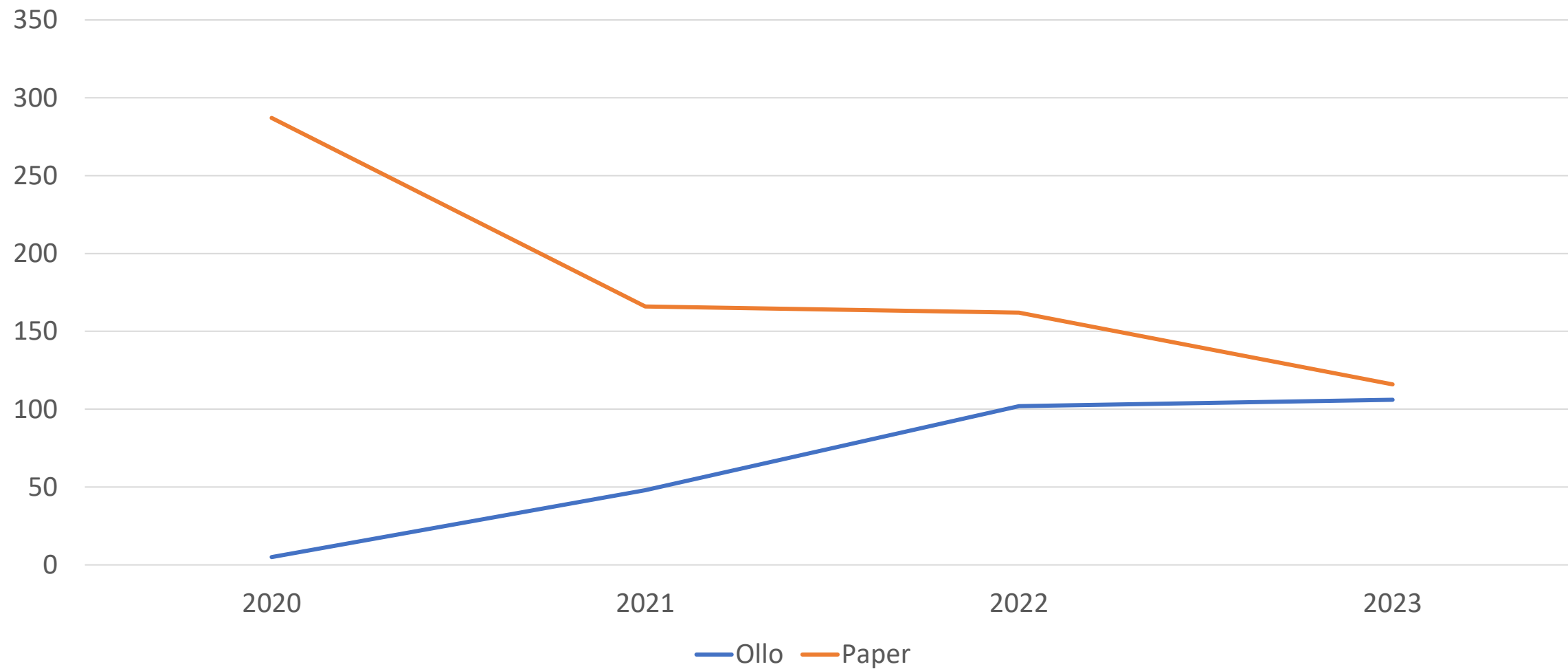
Longline Logsheet JSON Standard

Version	Date	Current
1.0.1	21/01/2020	✓
1.0.0	19/11/2019	

This protocol is intended for software developers to develop applications for allowing tuna longline fishing vessels operating in the Western and central Pacific Ocean (WCPO) to electronically submit (using JSON format) their catch and effort data to the regional logsheet database system TUFMAN2 administered by the Pacific Community (SPC) on behalf of member countries. Please check with the respective national fisheries authority to confirm if, and how, this protocol applies to the licenced fishing vessels.



Longline observer trip submission to TUFMAN2



YES!



IT WORKS!

Thank you

Questions