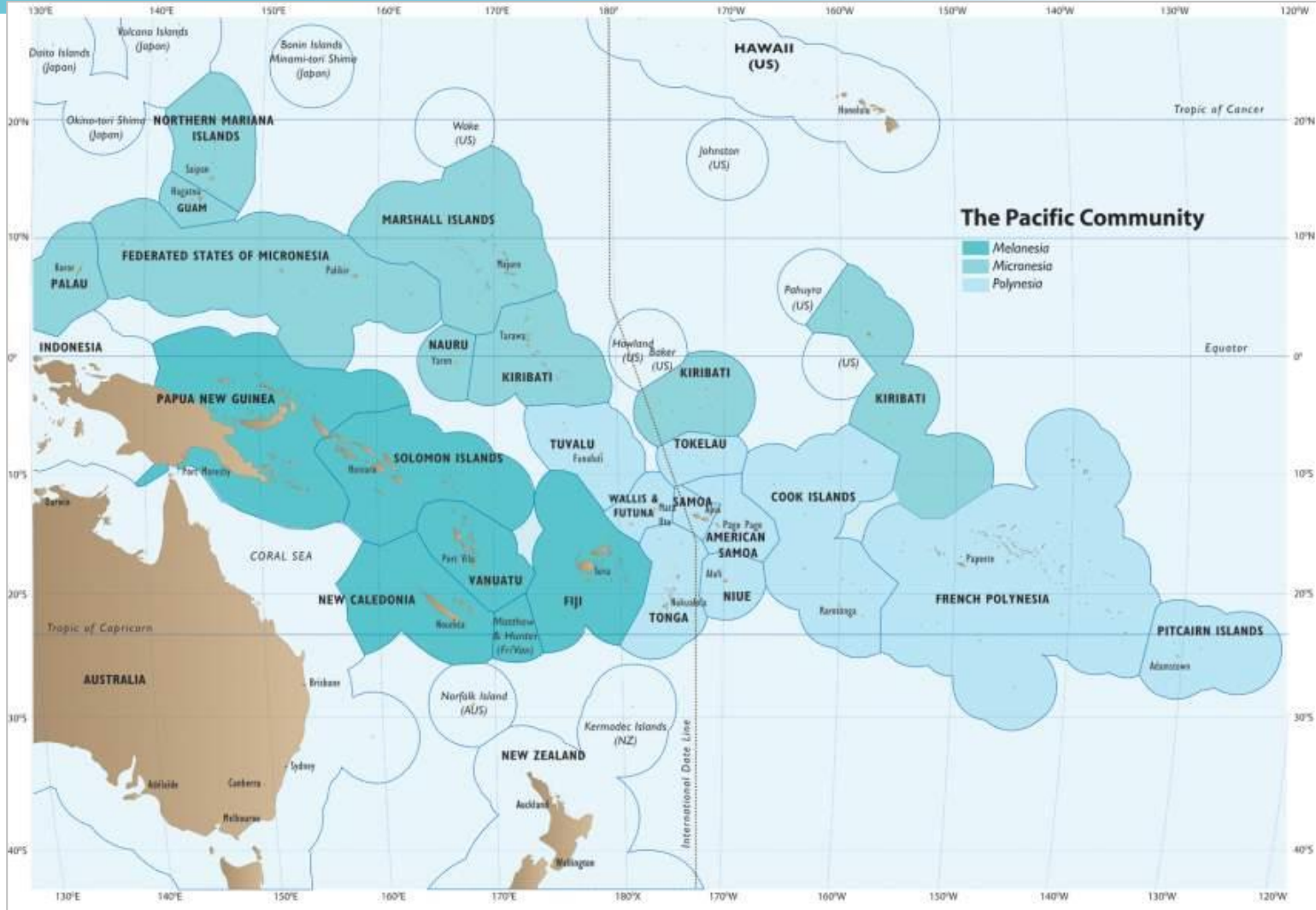




Micronesia
8-12 February 2021

Micronésie
8-12 février 2021



Emerging issues:
Environment and
non-environment
issues and People-
Centered
Approach

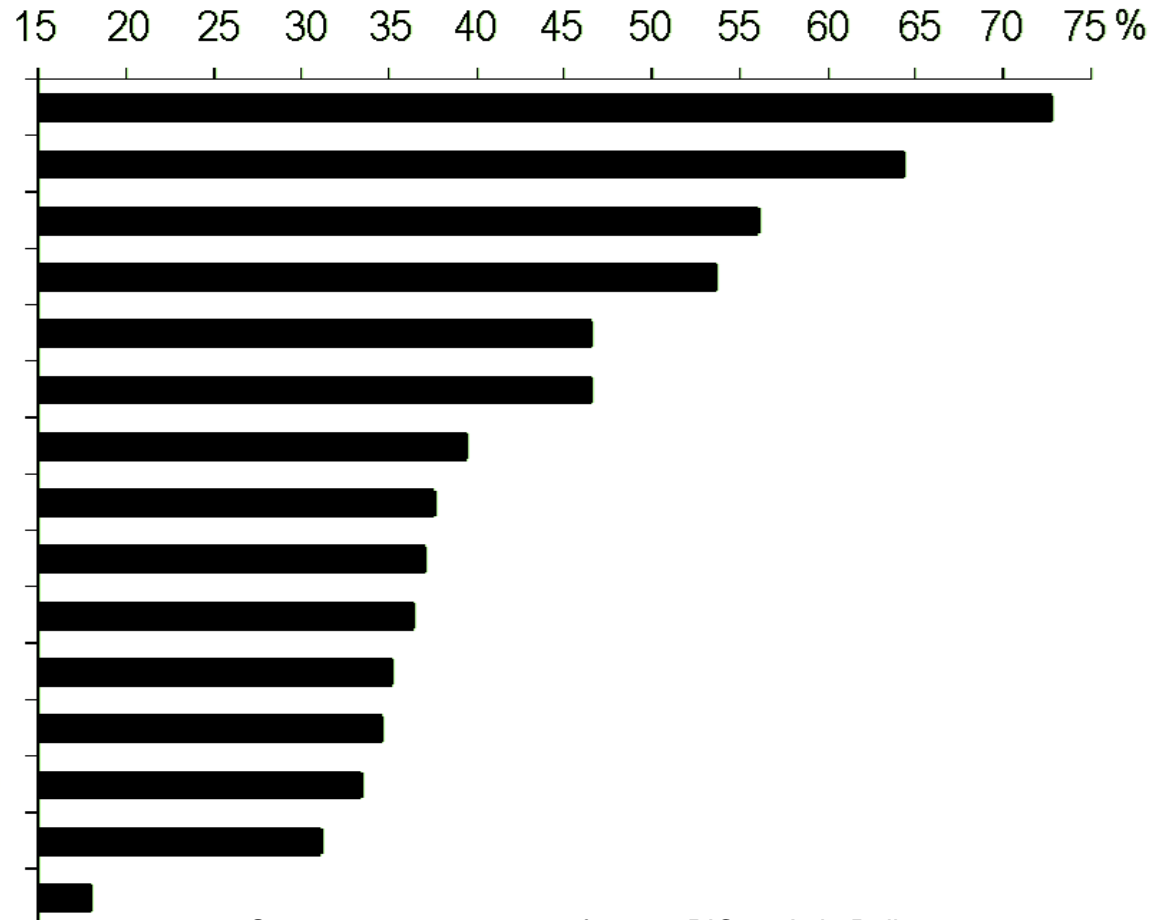


Micronesia
8-12 February 2021

Micronésie
8-12 février 2021



Environmental issues affecting Coastal Fisheries



Source: survey response from 21 PICs – Apia Policy, 2008



Environmental and non-environmental issues affecting CF

Coastal erosion / Sedimentation

Reef health degradation

Rubbish dumping in the sea (e.g. plastic)

Youth disengagement

Lower fish stock and other targeted species

Lack of awareness

Lack of effective partnership and collaboration

Climate Change

Poor waste
management

Destructive fishing practises

Population growth

Leadership issues

Coral mining

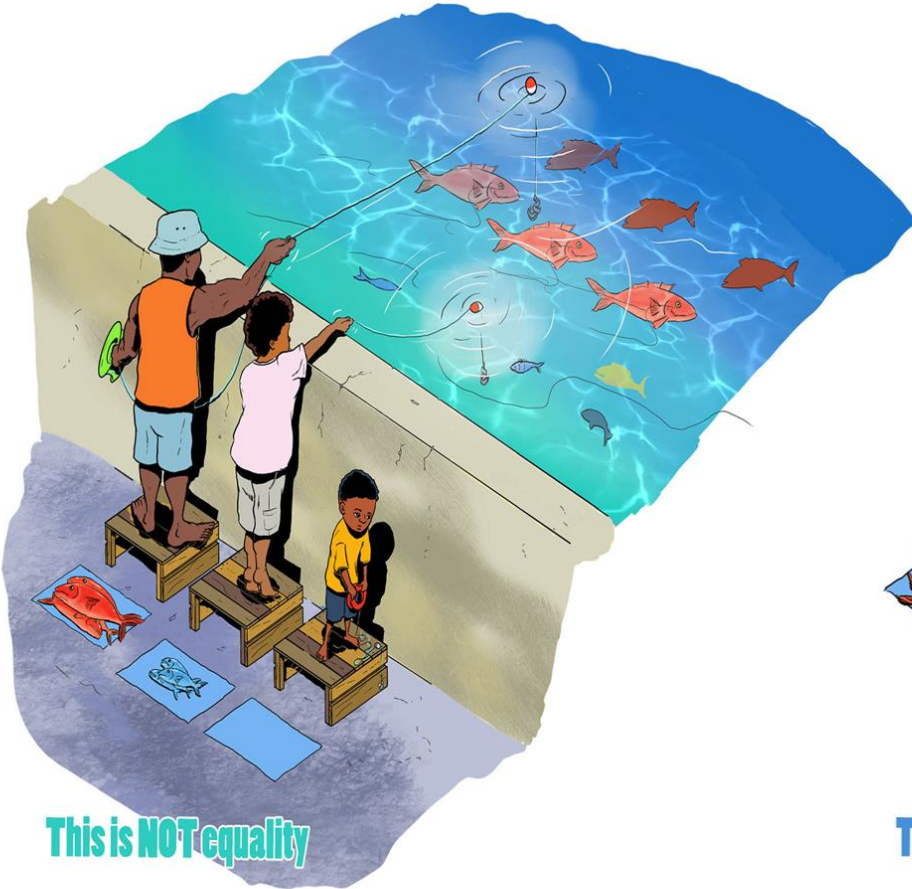


Micronesia
8-12 February 2021

Micronésie
8-12 février 2021

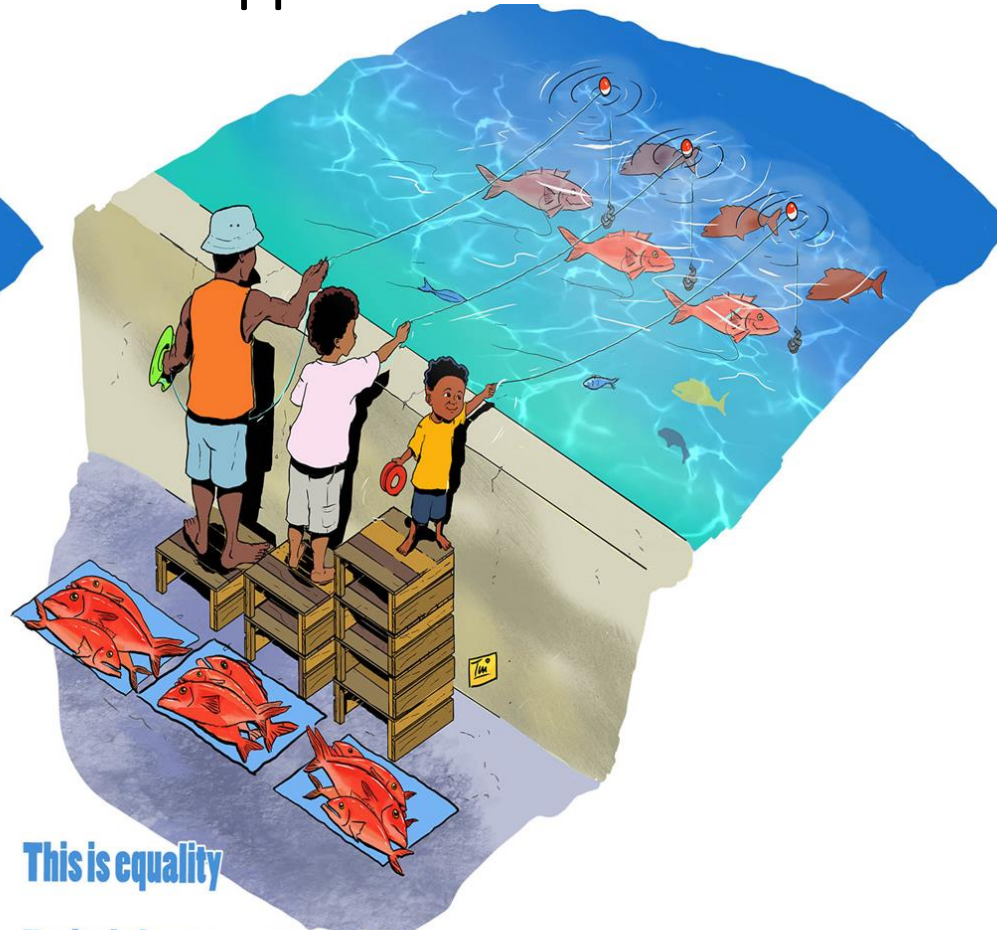


People-centred approach



This is **NOT** equality

Equal inputs = unequal outcomes



This is equality

Equity in inputs = equality in outcomes

- That equal benefits trickle down to all in the community including marginalised groups (men, women, youths, elders, etc.)



Micronesia
8-12 February 2021

Micronésie
8-12 février 2021



TAKE HOME MESSAGE

In applying a People-centred approach

Community engagement approaches need to be gender sensitive and socially inclusive - so it does not unintentionally reinforce or worsen inequalities within a community.



Scaling-up
community-based
fisheries management

Transposition à grande
échelle de la gestion
communautaire des pêches



Micronesia
8-12 February 2021

Micronésie
8-12 février 2021



Pacific
Community
Communauté
du Pacifique

Thank You

Natalie MAKHOUL

Gender and Human Rights Specialist

Fisheries, Aquaculture and Marine Ecosystems (FAME) Division

Pacific Community (SPC)

nataliemak@spc.int

Margaret FOX

Gender and Social Inclusion Adviser - Fisheries

Human Rights & Social Development Programme

Pacific Community (SPC)

margaretf@spc.int

Watisoni LALAVANUA

Community-based Fisheries Management Officer

Fisheries, Aquaculture and Marine Ecosystems (FAME) Division

Pacific Community (SPC)

watsonil@spc.int