

# O I'A E MASANI ONA MAUA I LE AFA LOLOA I AMERIKA SAMOA

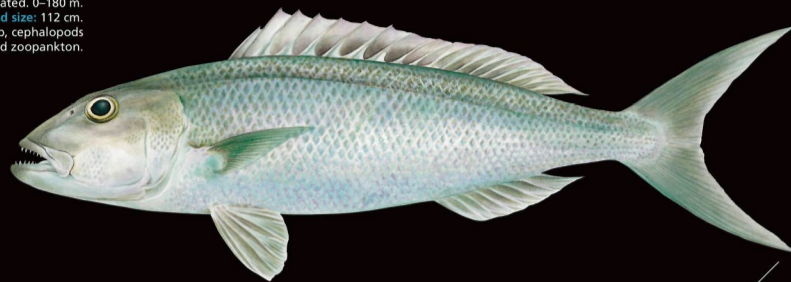
## Bottomfish species of American Samoa



Filoa-gutumūmū • Ambon emperor

Habitat: Lagoons and deeper waters of coral reefs and adjacent sandy bottom.  
Max. recorded size: 70 cm.  
Food: Mostly fish, but also molluscs, crustaceans and sea urchins.

Habitat: Reef associated. 0–180 m.  
Max. recorded size: 112 cm.  
Food: Fish, shrimp, crab, cephalopods and zooplankton.



Aprion virescens

Utu; Asoama • Green jobfish

Habitat: Sand and rubble areas of outer reef slopes. 12–160 m.  
Max. recorded size: 50 cm.  
Food: Crustaceans, fish, echinoderms and molluscs.



Lethrinus rubrioperculatus  
Filoa-pa'o'omūmū; Filoa-ulutele • Spotcheek emperor

Habitat: Coral reef associated. 8–50 m.  
Max. recorded size: 20 cm.  
Food: Fish, shrimp, crab, other crustaceans, cephalopods, and some planktonic items.



Lutjanus rufolineatus

Savane-ulasama • Yellow-lined snapper

Habitat: Coral reefs, in shallow lagoons and on outer reef slopes. Juveniles in seagrass beds around patch reefs. 3–265 m.  
Max. recorded size: 40 cm.  
Food: Fish, shrimp, crab, stomatopods, cephalopods, planktonic crustaceans and a variety of algae.



Lutjanus kasmira

Savane • Common bluestripe snapper

Habitat: Usually in clear-water areas at depths below 15 m; prefers island and offshore reefs. 3–250 m.  
Max. recorded size: 83 cm.  
Food: Fish, crab, shrimp and stomatopods.



Variola louti

Velo; Papa; Papa-tuauli • Yellow-edged lyretail

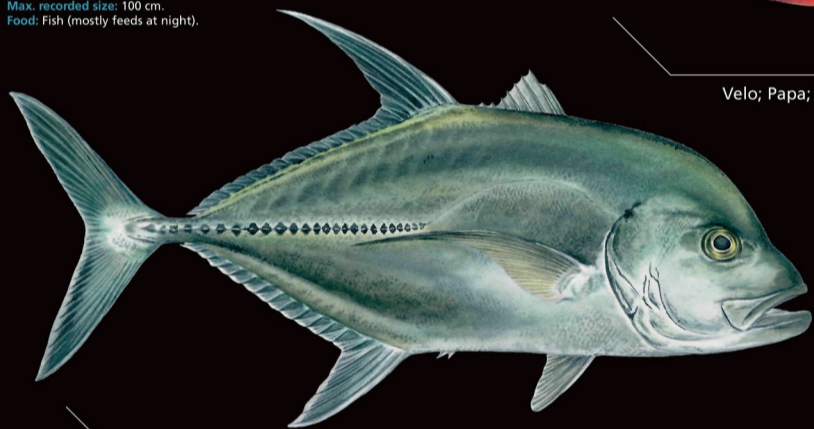
Habitat: Coral reefs. Juveniles in seagrass beds and in mixed sand and coral habitats of shallow sheltered reefs. 1–150 m.  
Max. recorded size: 50 cm.  
Food: Fish and a variety of invertebrates.



Lutjanus gibbus

Mala'i • Humpback red snapper

Habitat: Oceanic and insular species; prefers clear oceanic waters. 10–350 m.  
Max. recorded size: 100 cm.  
Food: Fish (mostly feeds at night).



Caranx lugubris

Tafaui • Black jack



Pristipomoides auricilla

Palu-ave; Palu-i'usama • Goldflag jobfish

Habitat: Outer reef slopes and seamounts. 90–360 m.  
Max. recorded size: 45 cm.  
Food: Fish and salps.



Aphaeus rutilans

Palu-gutusaliva; Palu-makomako; Palu-sina • Rusty jobfish

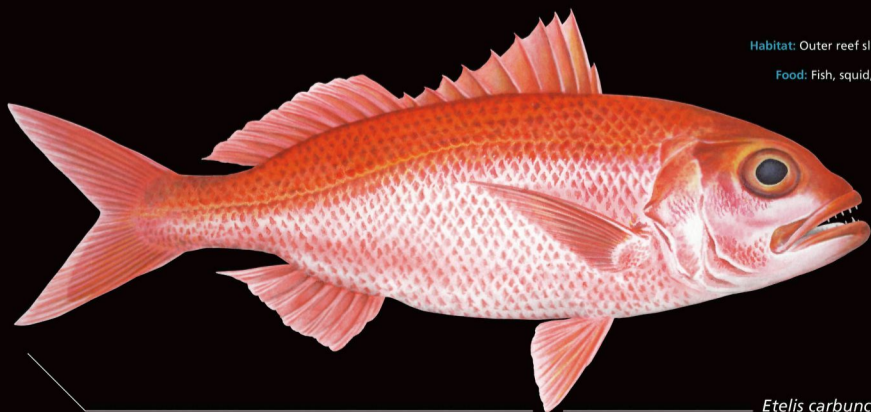
Habitat: Reefs and rocky bottom areas. 40–330 m.  
Max. recorded size: 110 cm.  
Food: Fish, squid and crustaceans.



Pristipomoides filamentosus

Palu-ena'ena; Palu-pa'epa'e; Palu-sina • Crimson jobfish

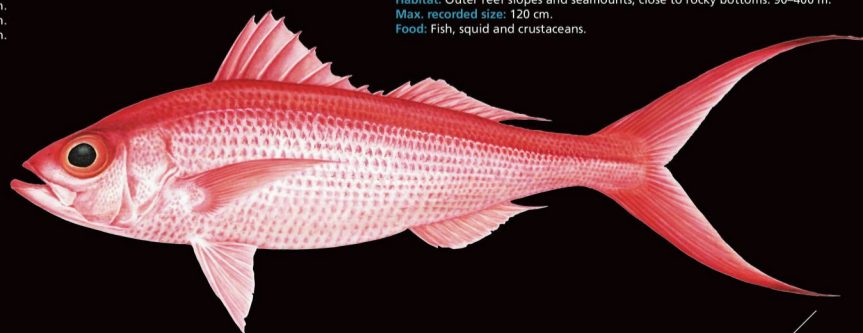
Habitat: Outer reef slopes and seamounts. 40–400 m.  
Max. recorded size: 100 cm.  
Food: Fish, crustaceans and zooplankton.



Etelis carbunculus

Palu-malau • Ruby snapper

Habitat: Outer reef slopes and seamounts, close to rocky bottoms. 90–400 m.  
Max. recorded size: 120 cm.  
Food: Fish, squid and crustaceans.



Etelis coruscans

Palu-malau; Palu-atu; Palu-loa • Flame snapper

