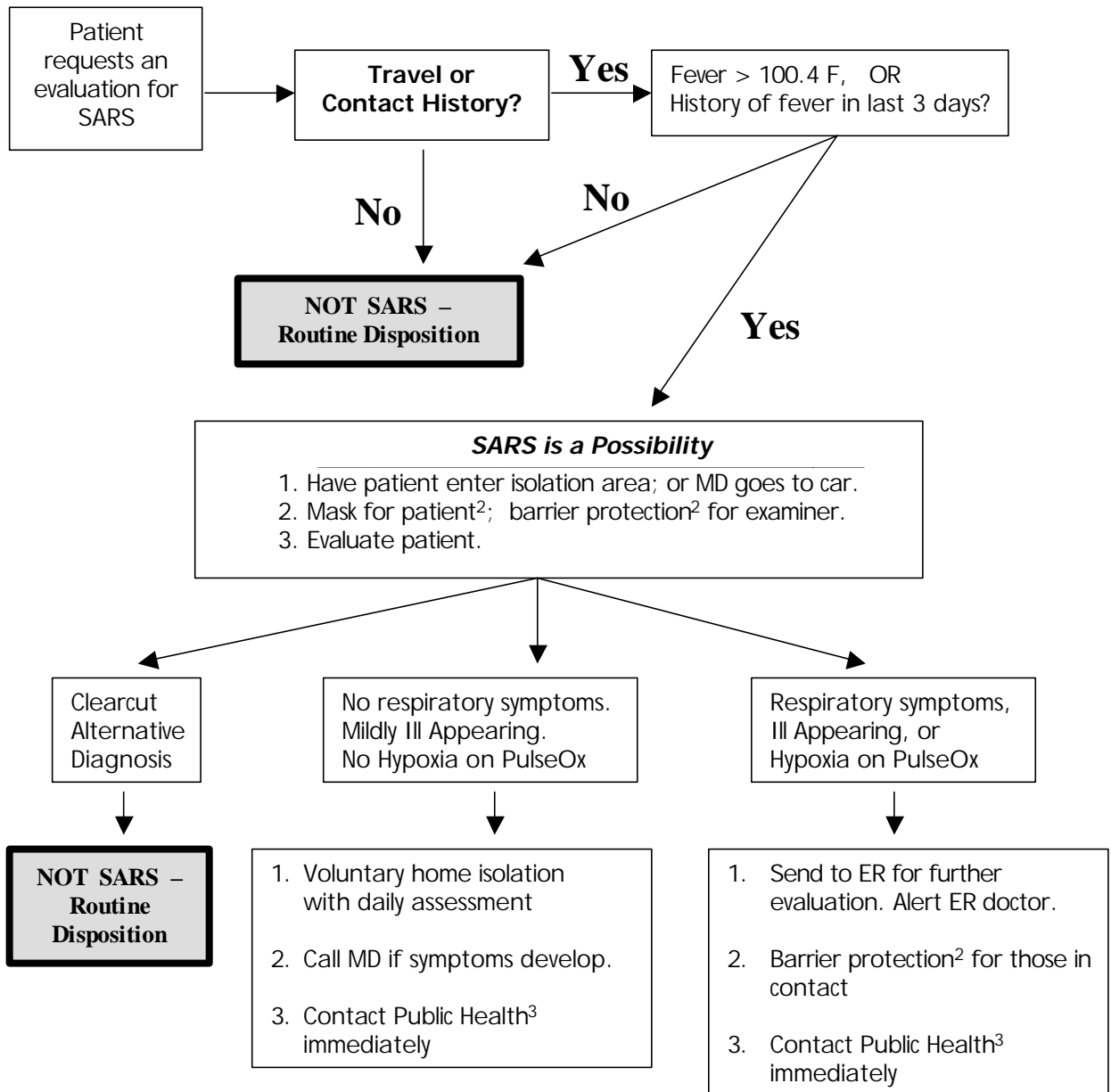


CNMI-DPH SARS Assessment Protocol for patients who present to clinics

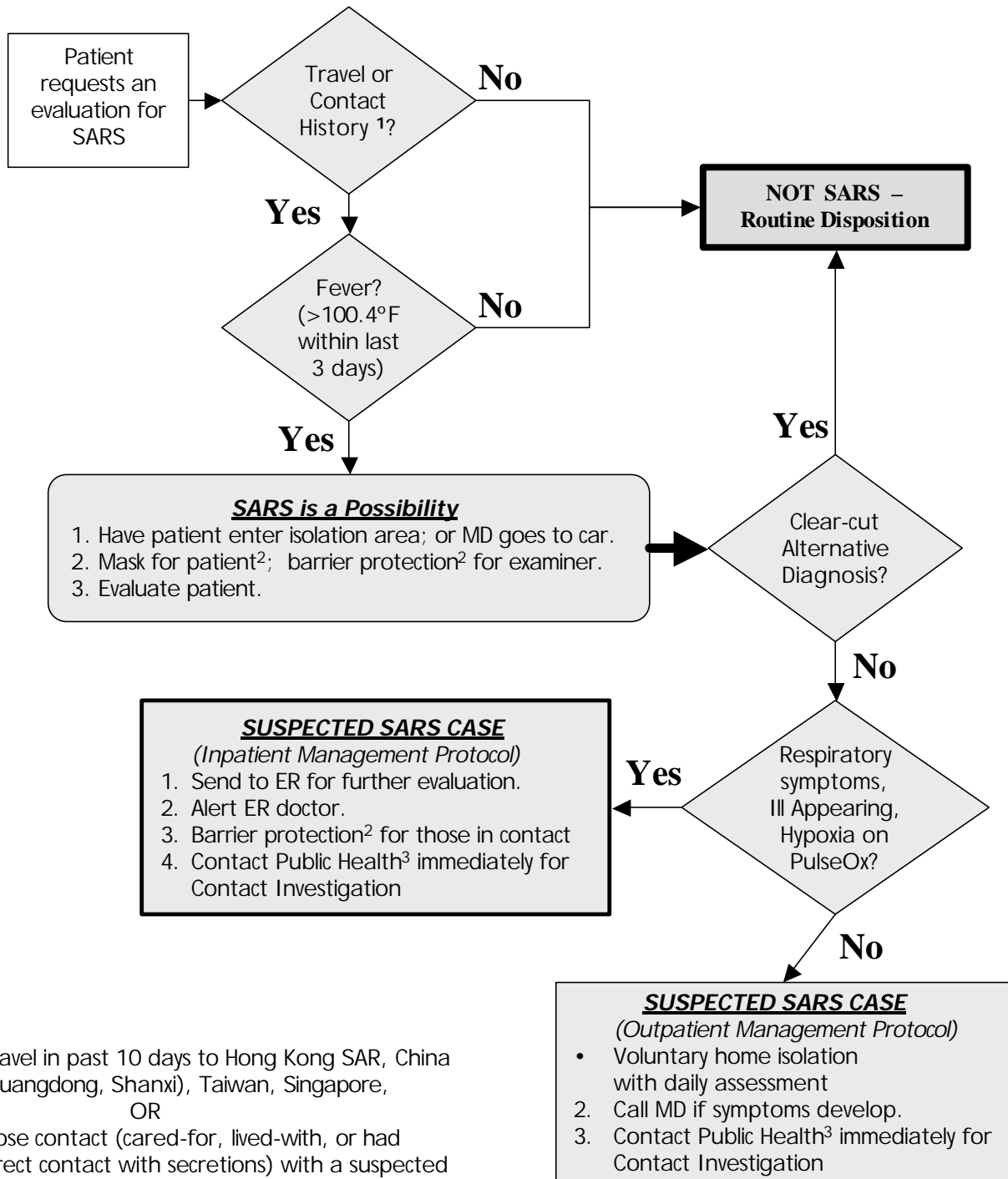


¹ Travel in past 10 days to Hong Kong SAR, China (Guangdong, Shanxi), Taiwan, Singapore, OR Close contact (cared-for, lived-with, or had direct contact with secretions) with a suspected SARS patient.

² N95 mask for patient; Disposable gloves, gown/ apron, N95 mask, safety eyewear for examiner or contact.

³ CNMI Public Health telephone numbers: 236-8703, or after hours: 234-8950

CNMI-DPH SARS Assessment Protocol for patients who present to clinics



¹ Travel in past 10 days to Hong Kong SAR, China (Guangdong, Shanxi), Taiwan, Singapore, OR
Close contact (cared-for, lived-with, or had direct contact with secretions) with a suspected SARS patient.

² N95 mask for patient; Disposable gloves, gown/ apron, N95 mask, safety eyewear for examiner or contact.

³ CNMI Public Health telephone numbers: 236-8703, or after hours: 234-8950