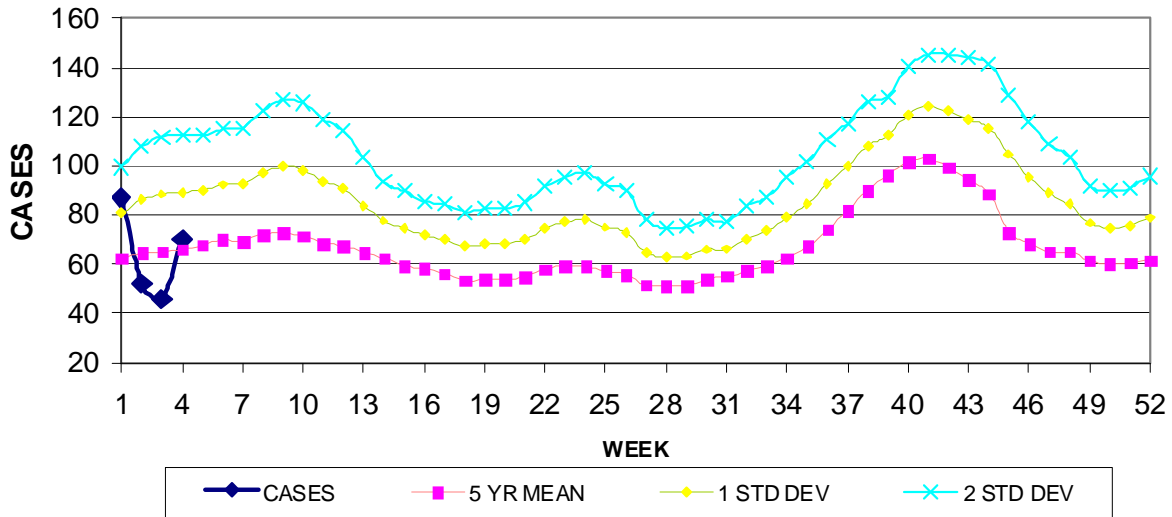


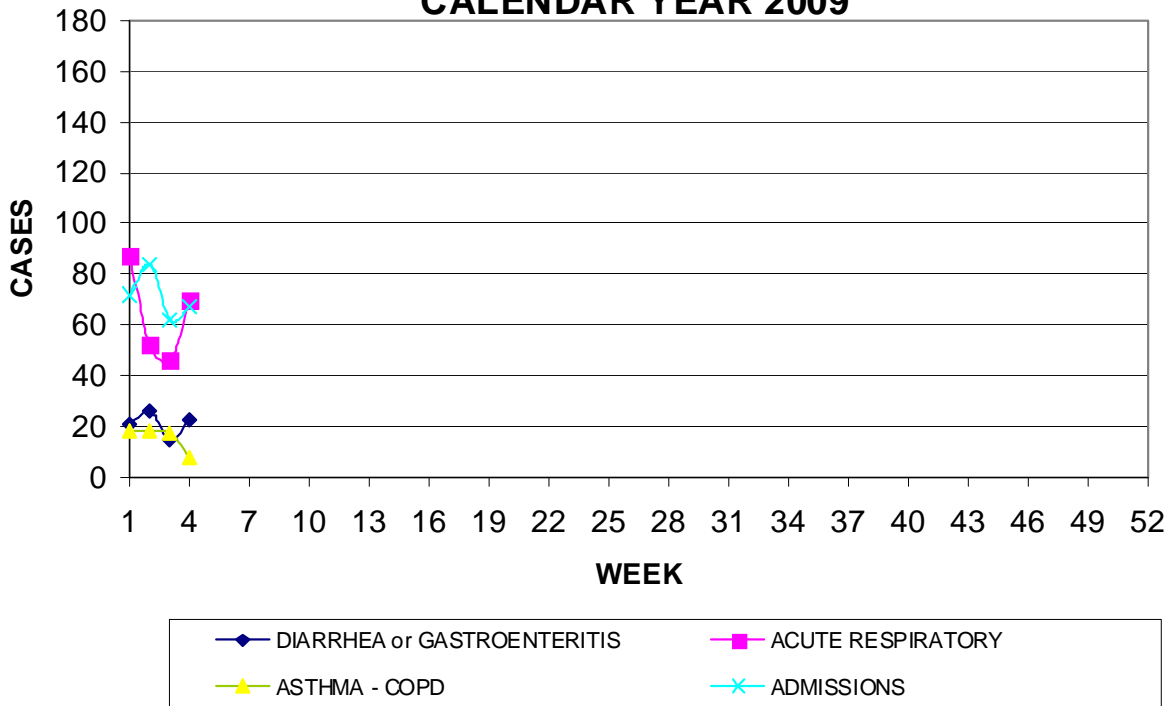
GUAM EPIDEMIOLOGY NEWSLETTER
 REPORT FOR WEEK ENDING: 1/31//2009 (Reporting week 2009-4)

GUAM REPORTS

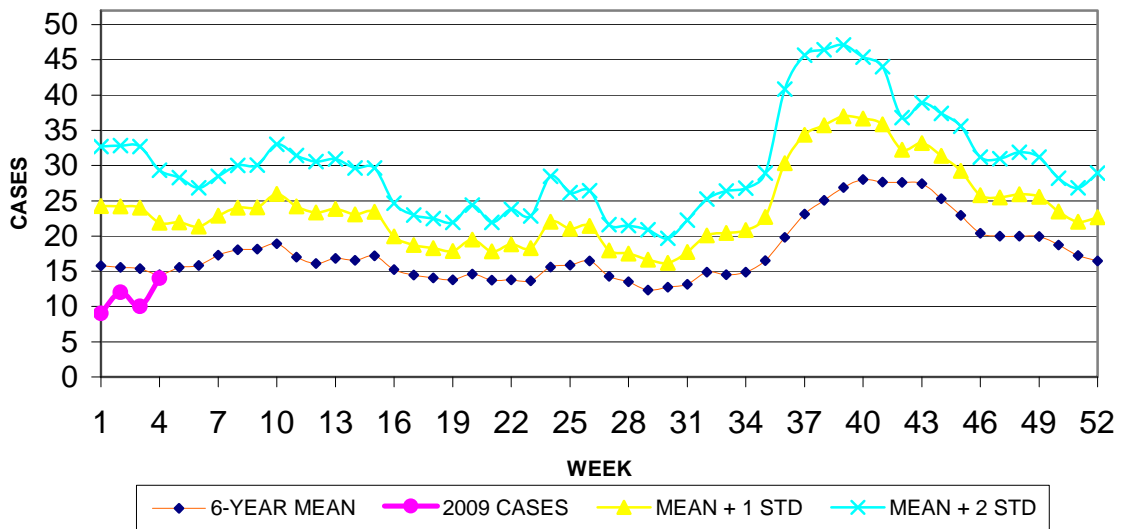
**GUAM ACUTE RESPIRATORY INFECTION SURVEILLANCE, 2009;
 NUMBER OF PATIENTS SEEN IN THE GMHA-ED BY WEEK SEEN**



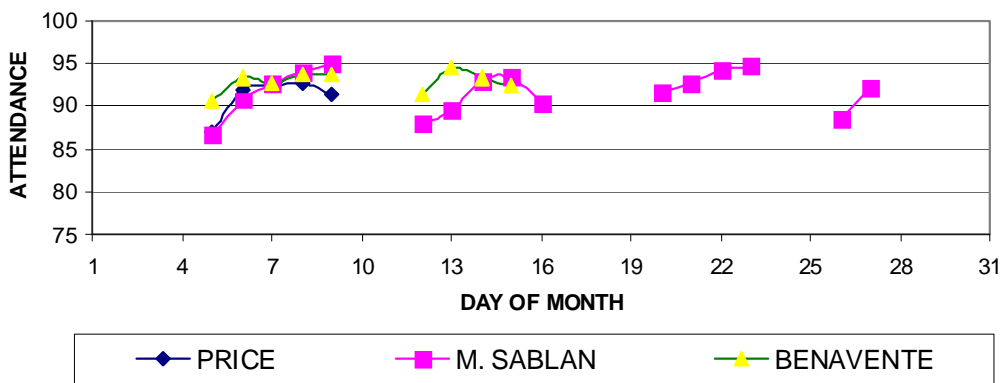
**GUAM SYNDROMIC DISEASE SURVEILLANCE
 GMHA-ED PATIENT DIAGNOSES BY WEEK FOR
 CALENDAR YEAR 2009**



MEDICAL RECORDS AND INFECTION CONTROL DEPARTMENTS
 GUAM MEMORIAL HOSPITAL AUTHORITY
**HOSPITAL INPATIENT DISCHARGES WITH A DIAGNOSIS OF
 PNEUMONIA BY WEEK DISCHARGED, 2009**

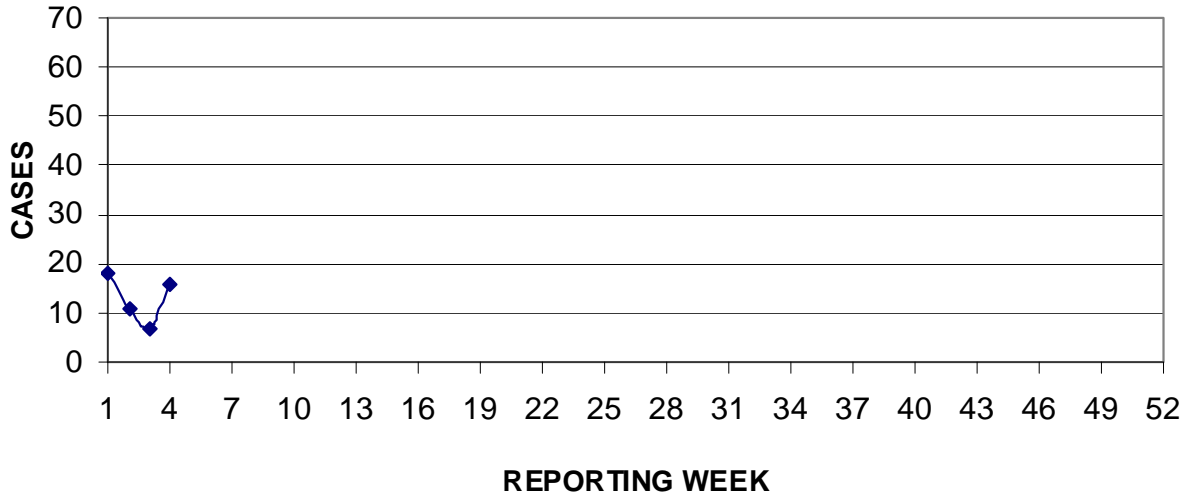


GUAM PUBLIC SCHOOL SYSTEM
**DAILY PERCENT OF STUDENTS ATTENDING,
 JANUARY 2009**



Data from GPSS compiled by Marie Luarca, CPHO Office, Guam DPH&SS

PREVENTIVE MEDICINE DEPARTMENT
U.S. NAVAL HOSPITAL GUAM
**PNEUMONIA CASES SEEN IN GUAM MILITARY TREATMENT FACILITIES
BY WEEK REPORTED, 2009**



GUAM ANIMAL DISEASE (ZONOSSES) REPORTS
REPORTS RECEIVED FOR THE WEEK ENDING 1/31/2009
Anaplasmosis-1, Ehrlichia canis-1

GUAM SENTINEL PHYSICIAN INFLUENZA SURVEILLANCE
REPORTS RECEIVED FOR THE WEEK ENDING 1/31/2009
SPORADIC – 2 cases reported