



Government of Tuvalu

Ministry of Finance, Economic Planning & Industries

2005 Statistical Report

**Central Statistics Division
Ministry of Finance, Economic Planning & Industries
Government of Tuvalu
Fax: (688) 20210 Phone (688) 20107
October 2005**

PREFACE

The content of this report highlights the latest statistics about Tuvalu. The report contains the Consumer Price Index (CPI), Trade, Migration, Health, Population and Education, Electricity and Crime statistics. The format of the report follows the previous reports and these statistics will be updated with each quarterly report when new data become available.

Data for the earlier years of some of the series can be obtained upon request from our office. We appreciate your cooperation in providing our office any statistical information that can be included in this report. We also welcome any feedback, comments or suggestions in improving the contents of this report.

A lot of thanks to the office staff who were involved in compiling this report and so as to our data providers for their contribution and support in providing the relevant raw data and statistics.

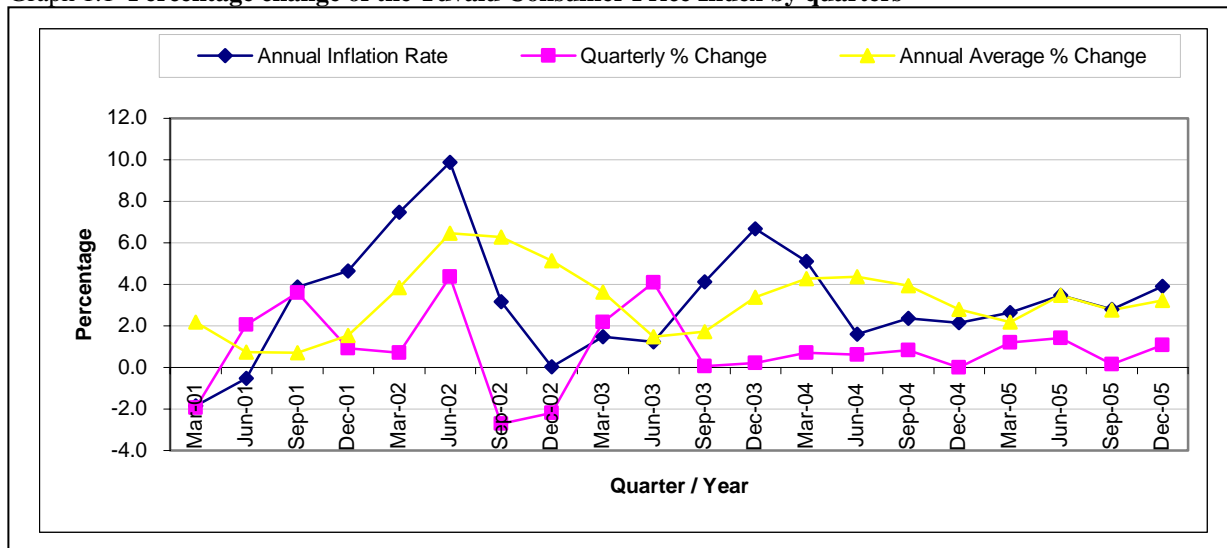
Semu Malona
Government Statistician
Ministry of Finance, Economic Planning and Industries
31 October 2006

<i>CONTENTS</i>	<i>Page</i>
CONSUMER PRICE INDEX	1
TRADE	2
MIGRATION	4
HEALTH	9
POPULATION	11
EDUCATION	12
ELECTRICITY	21
CRIME	22
APPENDIX	23
TECHNICAL NOTES	42

1. TUVALU CONSUMER PRICE INDEX

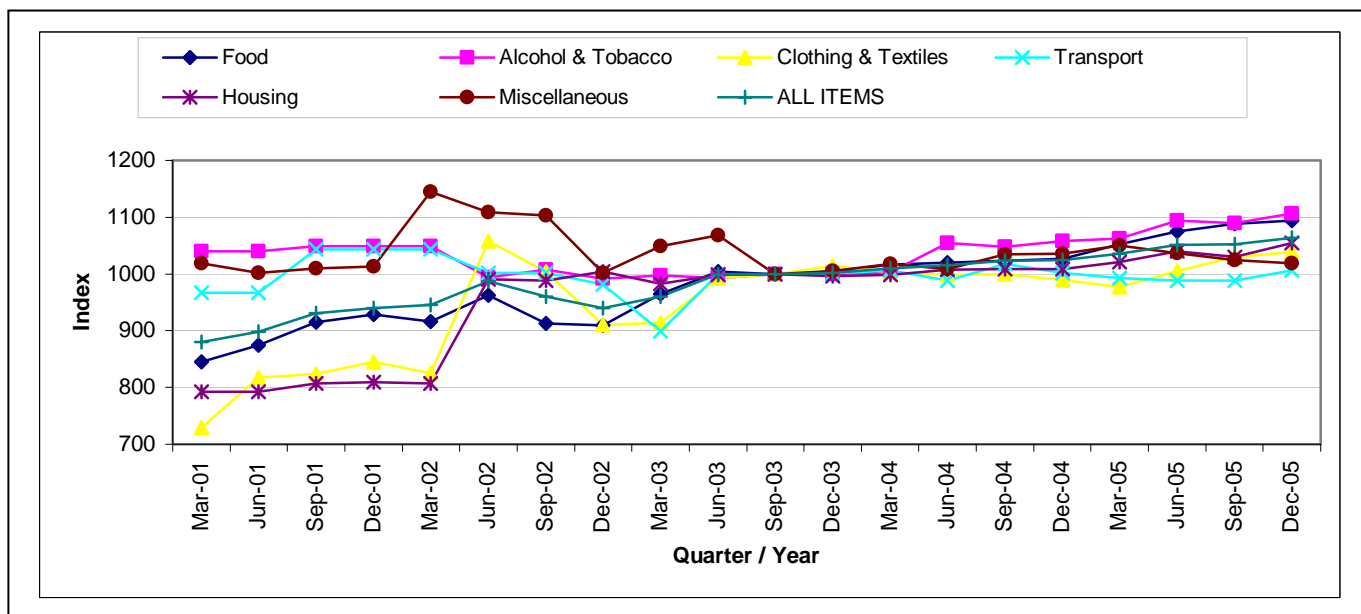
Graph 1.1 shows the Tuvalu CPI experiences a quarterly increase of 1.1% for the fourth quarter of 2005. The increase in the indices from 1052.5 to 1063.9 of the third quarter and fourth quarter respectively resulted in the annual inflation rate of 3.9% and the average annual inflation rate of 3.2%. (Refer to Table 1.1)

Graph 1.1 Percentage change of the Tuvalu Consumer Price Index by quarters



Graph 1.2 provides the movement in the CPI since 2001. All groups express a steady increase indicating the increase in the prices of items in the basket of goods over the last five years. All the major groups except the *miscellaneous* group experienced a quarterly increase in their priced items. (Refer to Table 1.2).

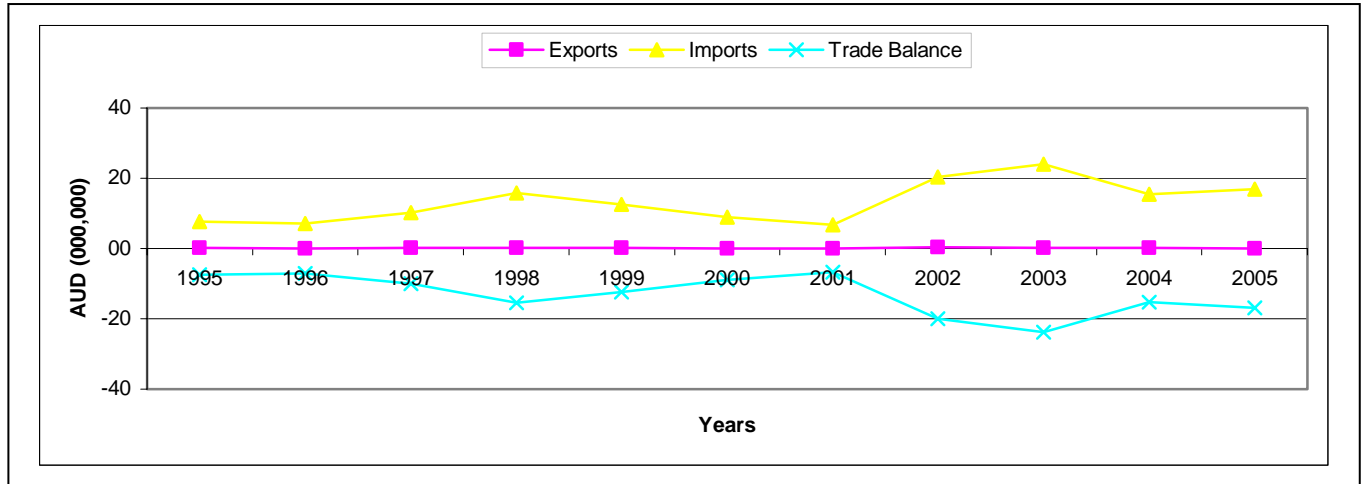
Graph 1.2 Quarterly index of the groups that contribute to the CPI



2. TRADE

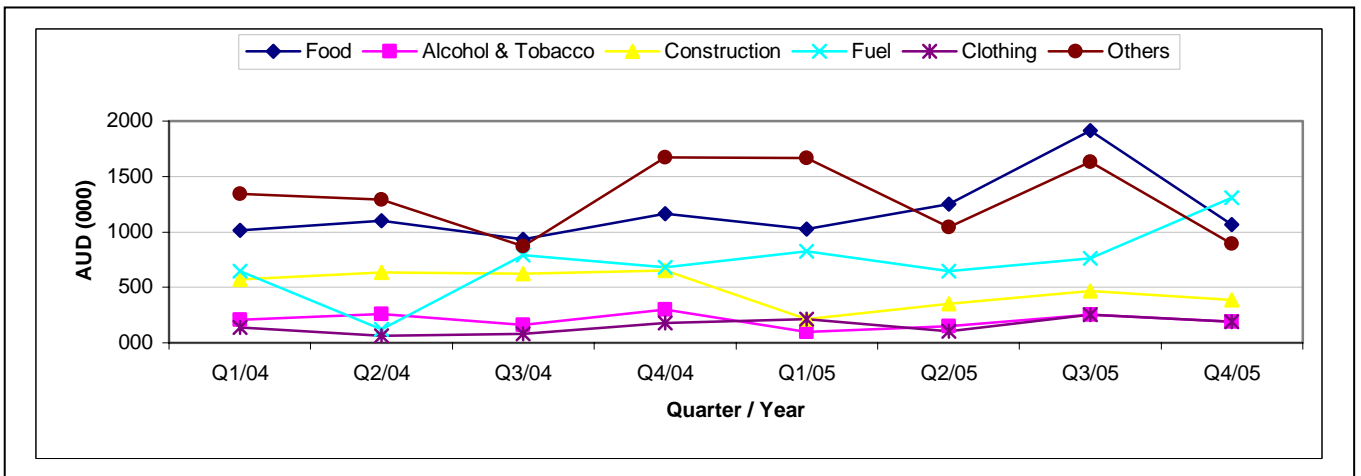
Graph 2.1 shows the annual value of merchandise imports for the year ended December 2005 is A\$17 million. It shows a 9.1 % increase from A\$15 million for the year ended December 2004. It also shows a drop of 9.9% in the trade balance from 2004 to 2005 with values of -A\$15 millions to -A\$17 millions respectively. (Refer to Table 2.1)

Graph 2.1 Exports and imports by year A\$CIF



Graph 2.2 shows that the imports on *food, fuel, clothing* and *others* is increasing from 2004 to 2005. The *construction* and the *alcohol & tobacco* groups experienced a decrease within this period. (Refer to Table 2.2)

Graph 2.2 Merchandise imports by major commodities



Graph 2.3 shows that most of the goods that we import are the products of Australia, Fiji, Singapore and New Zealand. The aggregate imports from these countries product exceed A\$1 million with 80.9%. (Refer to Table 2.5)

Graph 2.3 Imports by country of origin - 2005

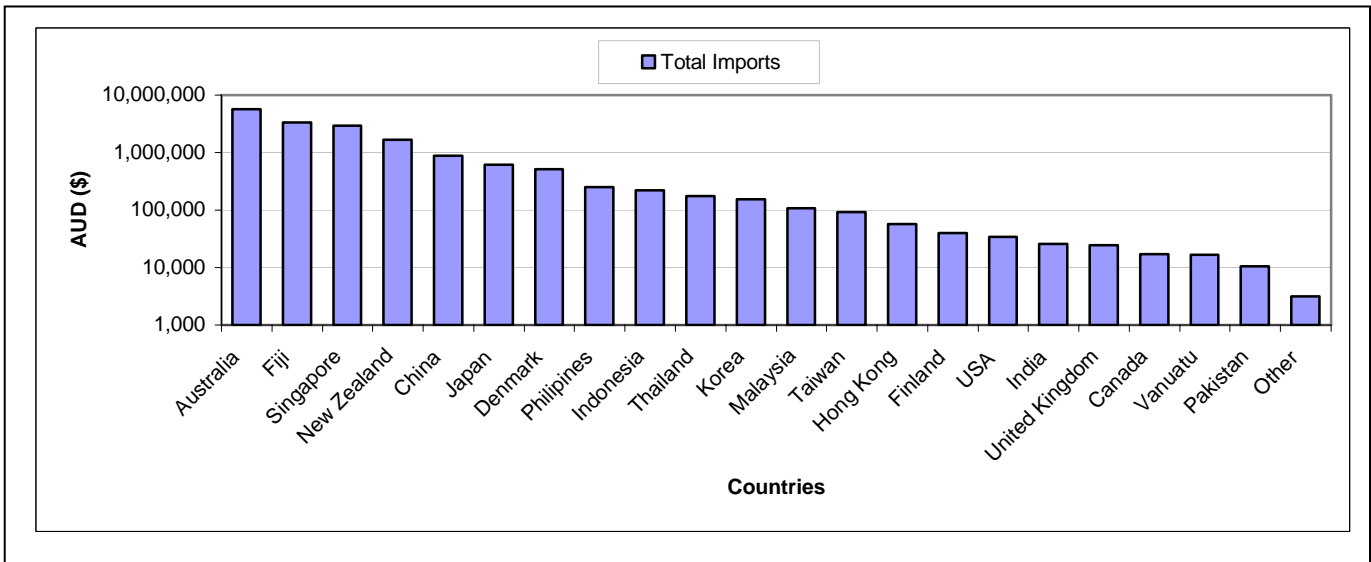


Figure 2.4 illustrated that Fiji, Australia and New Zealand are the main countries for our imports which is 84% of the aggregate imports. Almost half of the total imports are from Fiji, the imports from Australia and New Zealand are 29% and 11% respectively. (Refer to Table 2.7)

Figure 2.4 Imports by country of export – 2005

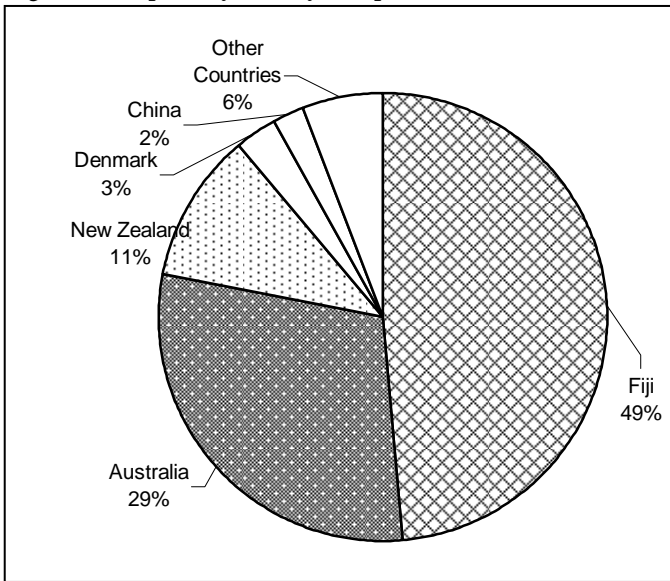


Figure 2.5 Imports by major groups - 2005

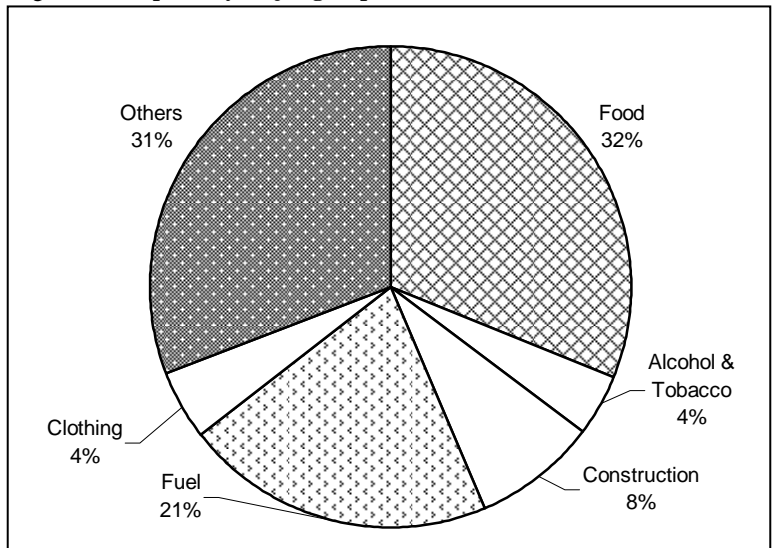


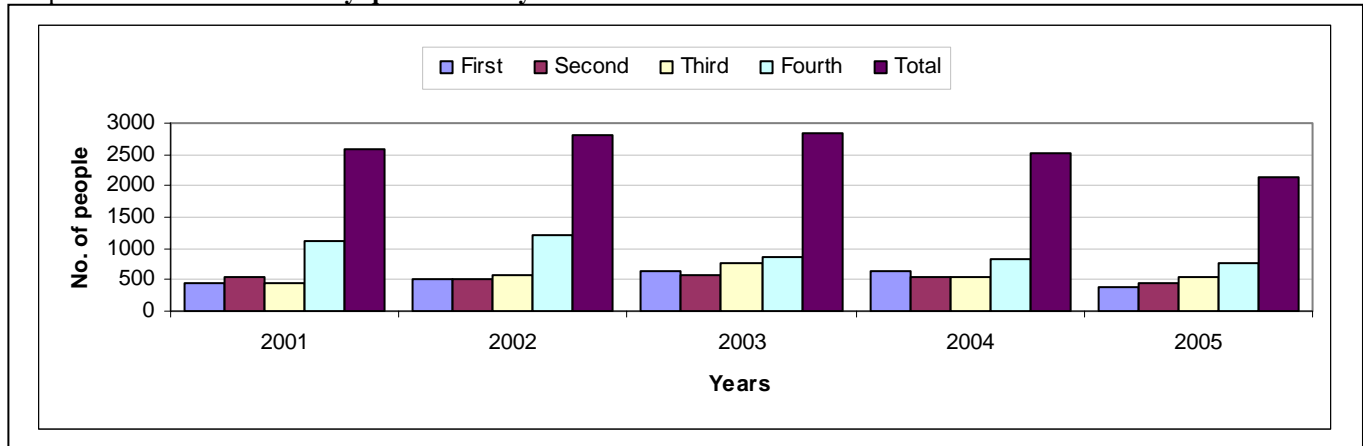
Figure 2.5 depicts higher proportions of imports besides the *others* group falls on the *food* and *fuel* groups with 32% and 21% respectively. (Refer to Table 2.7)

3. MIGRATION

3.1 RESIDENT ARRIVALS

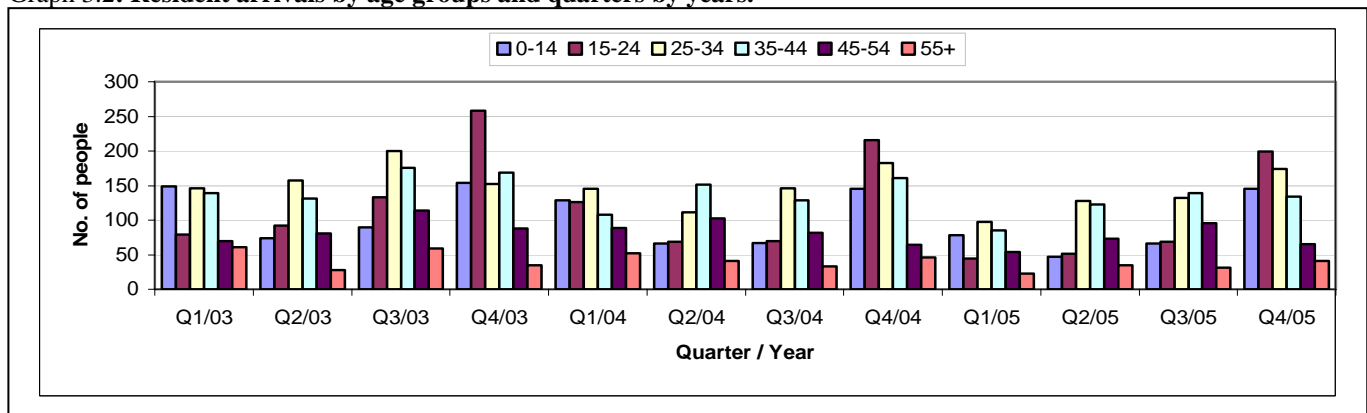
Graph 3.1 shows a general trend where residents are mostly coming into the country at the fourth quarter of the year. Most of these arrivals are students returning residents for Christmas holidays. There are more arrivals in 2004 than 2005. (Refer to Table 3.1)

Graph 3.1 Resident arrivals by quarters and years



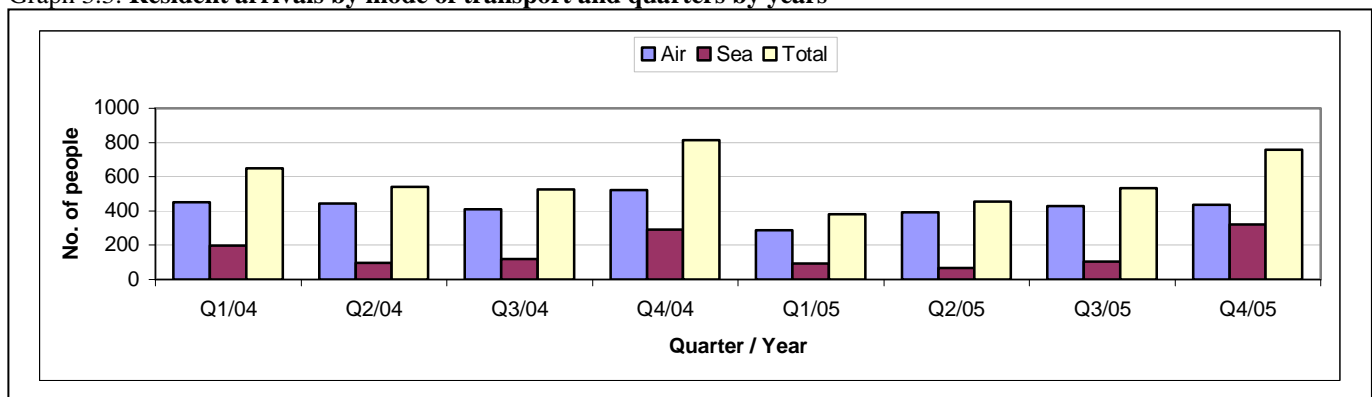
Graph 3.2 shows that most arrivals in the fourth quarter from 2003 to 2005 were from the age group of 15-24 with 258, 216 and 199 respectively. The arrivals at these years are mostly from the age group of 25-34 and 35-44 (Refer to Table 3.2).

Graph 3.2: Resident arrivals by age groups and quarters by years.



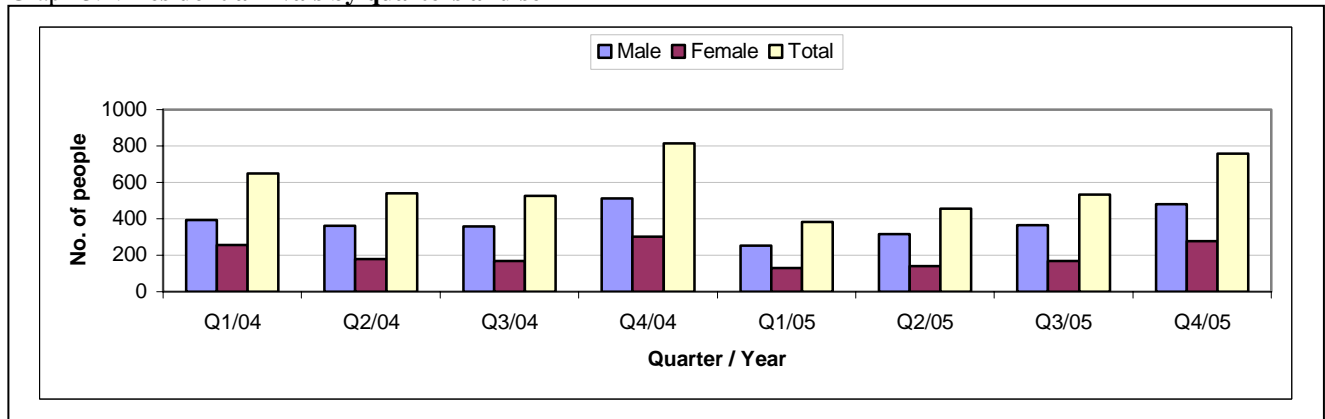
Graph 3.3 shows the fourth quarter 2005 arrivals by air and sea were 438 and 320 respectively. Most residents travelled into the country by planes rather than by ships. (Refer to Table 3.5).

Graph 3.3: Resident arrivals by mode of transport and quarters by years



Graph 3.4 depicts that the residents arrivals are mostly males compared to females in all the quarters for 2004 and 2005. As provided, about 2/3 of the arrivals are males and 1/3 are females. (Refer to Table 3.5).

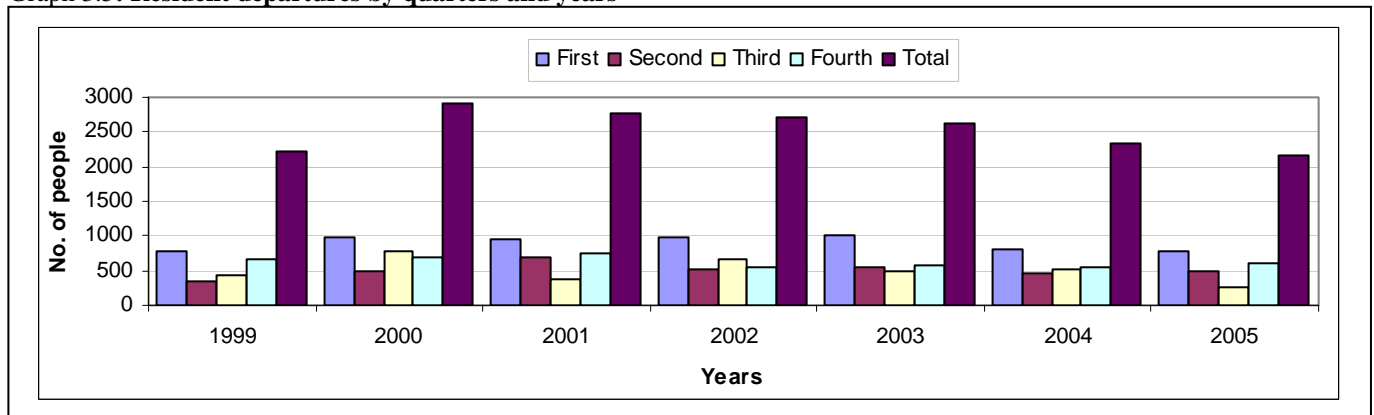
Graph 3.4: Resident arrivals by quarters and sex



3.2 RESIDENT DEPARTURES

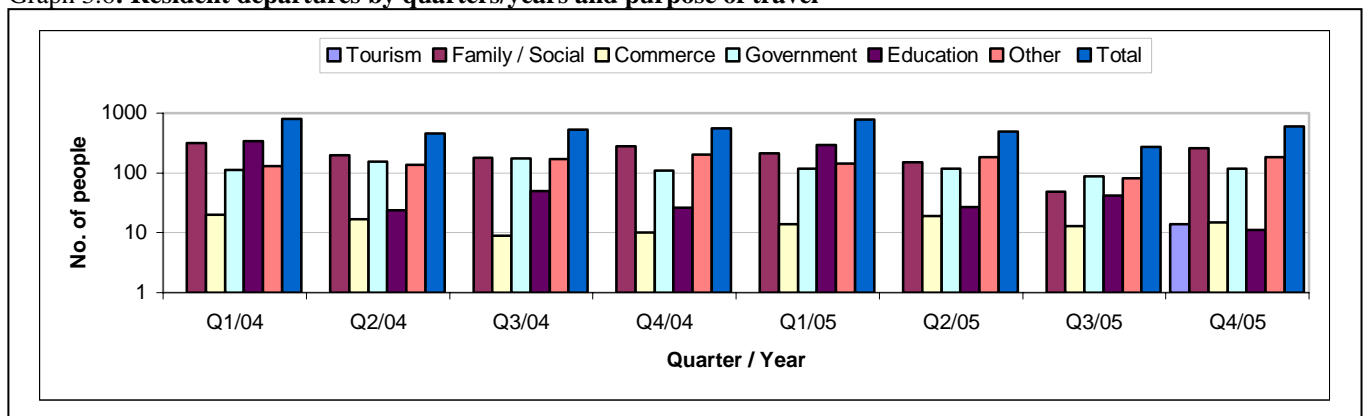
Graph 3.5 shows a decrease in departures by 7.8% from 2004 to 2005 with 2336 and 2153 respectively. Most of the departures occurred at the first quarter of every year where the students are returning to their schools. (Refer to Table 3.6).

Graph 3.5: Resident departures by quarters and years



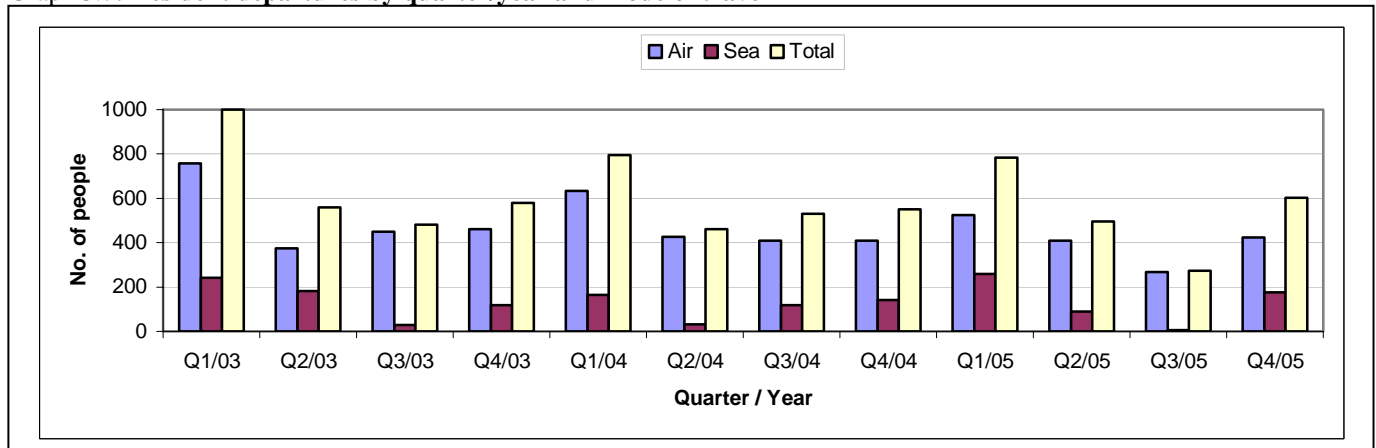
Graph 3.6 shows that residents are departed mostly on family / social, government and education purposes with 673, 440 and 374 respectively for 2005. (Refer to Table 3.7 and 3.8).

Graph 3.6: Resident departures by quarters/years and purpose of travel



Graph 3.7 indicates that most residents left the country travelled by planes. The 2005 departures by air and sea were 1624 and 529 respectively. (Refer to Table 3.7 and 3.9).

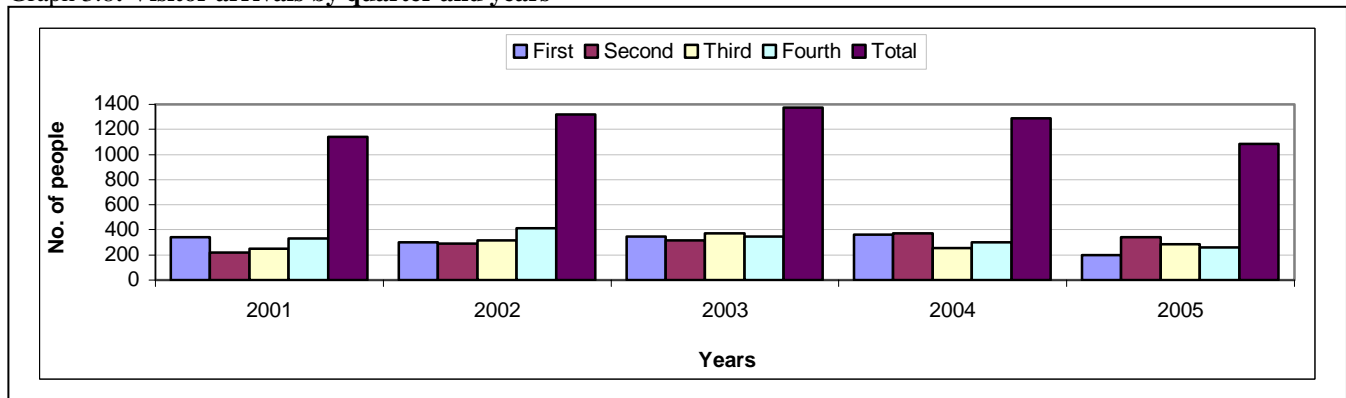
Graph 3.7: Resident departures by quarter/year and mode of travel



3.3 VISITOR ARRIVALS

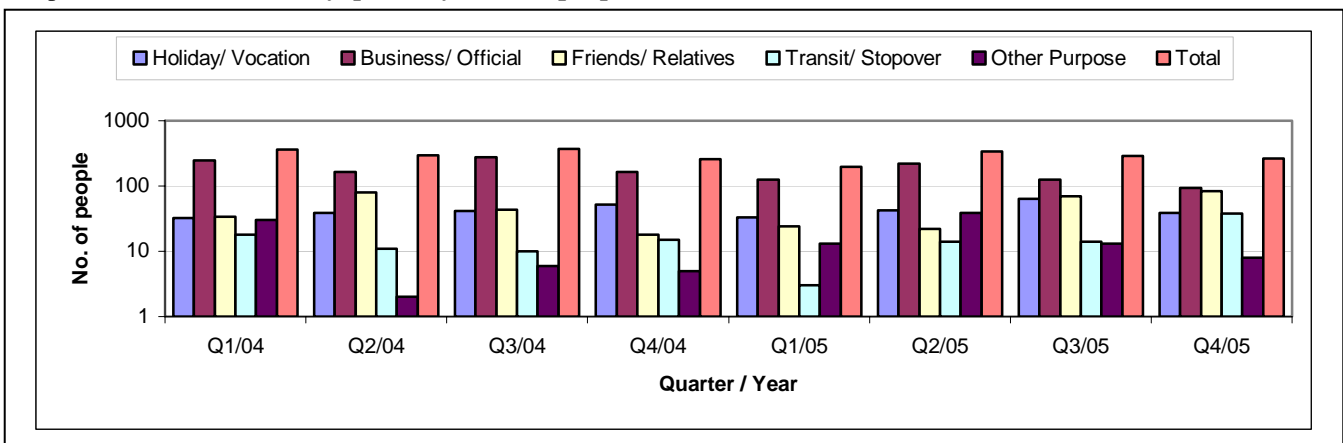
Graph 3.8 shows a decrease of 15.9% in the visitor's arrivals from 2004 to 2005 with 1290 and 1089 respectively. (Refer to Table 3.10)

Graph 3.8: Visitor arrivals by quarter and years



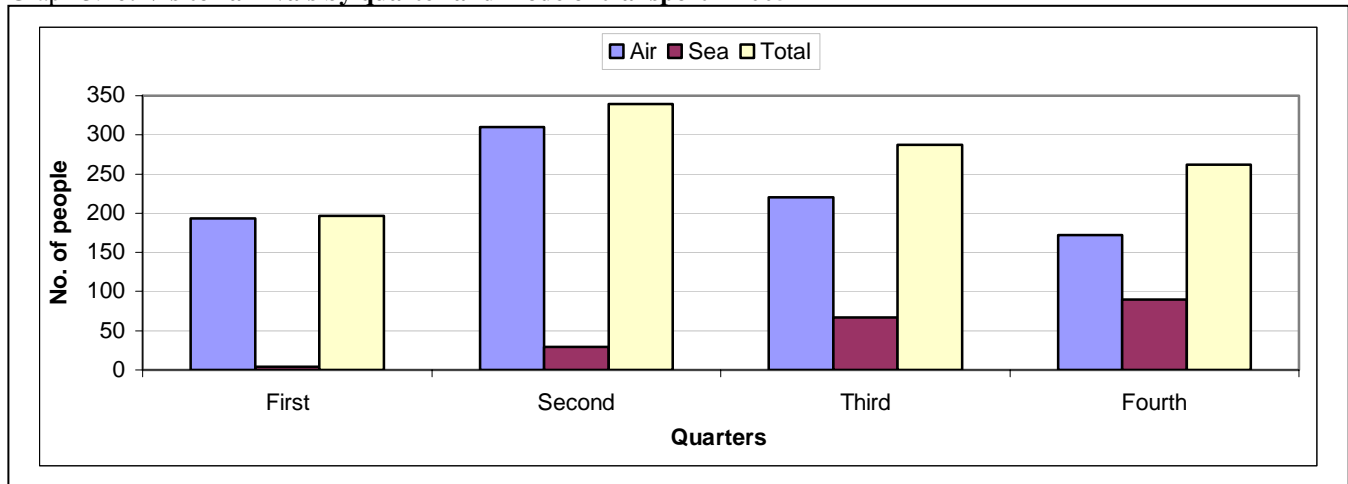
Graph 3.9 shows that most of the visitors arriving the country in 2004 and 2005 were for *Business / Office*, *Friends / Relatives* and *Holiday / Vocation* purposes with 566, 199, and 178 respectively. (Refer to Table 3.11)

Graph 3.9: Visitor arrivals by quarter/years and purpose of visit



Graph 3.10 shows that in 2005, most of the visitors arriving the country travelled by plane with 895 compared to the arrivals by boats with 190. (Refer to Table 3.14)

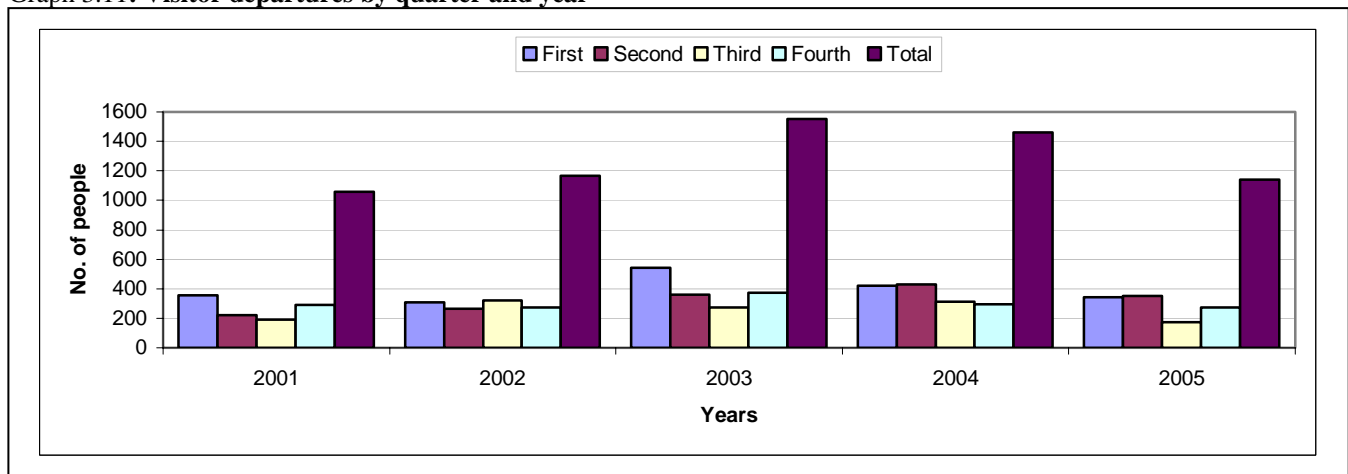
Graph 3.10: Visitor arrivals by quarter and mode of transport – 2005



3.4 VISITOR DEPARTURES

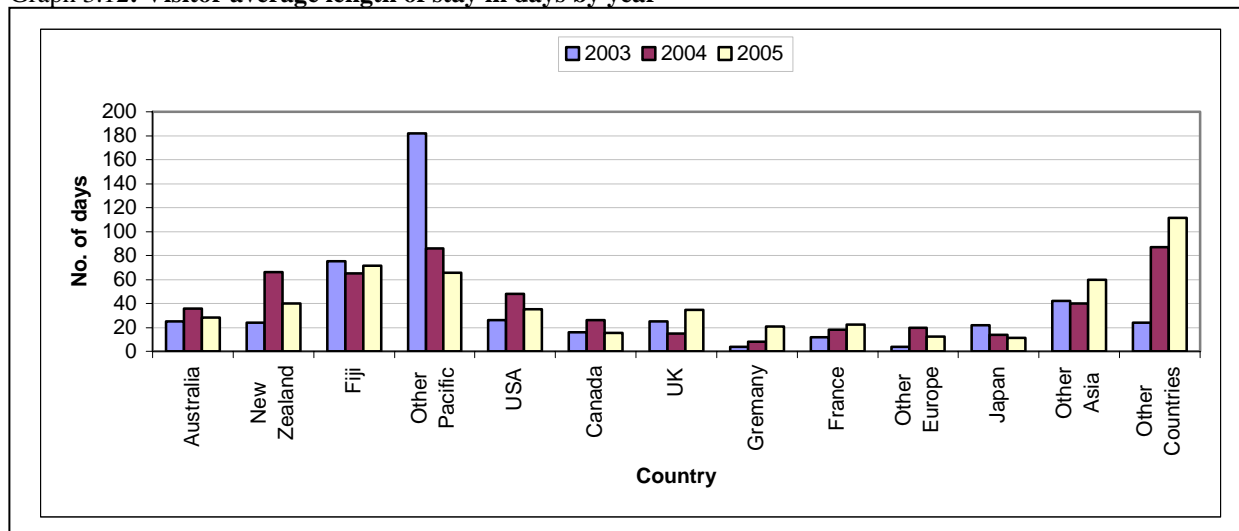
Graph 3.11 depicts a decrease of 21.8% in the total visitors departures from 2004 with 1460 to 2005 with 1142. (Refer to Table 3.15)

Graph 3.11: Visitor departures by quarter and year



Graph 3.12 shows that apart from Other Countries, Fiji record the highest average length of stay within the country with 71 days in 2005

Graph 3.12: Visitor average length of stay in days by year

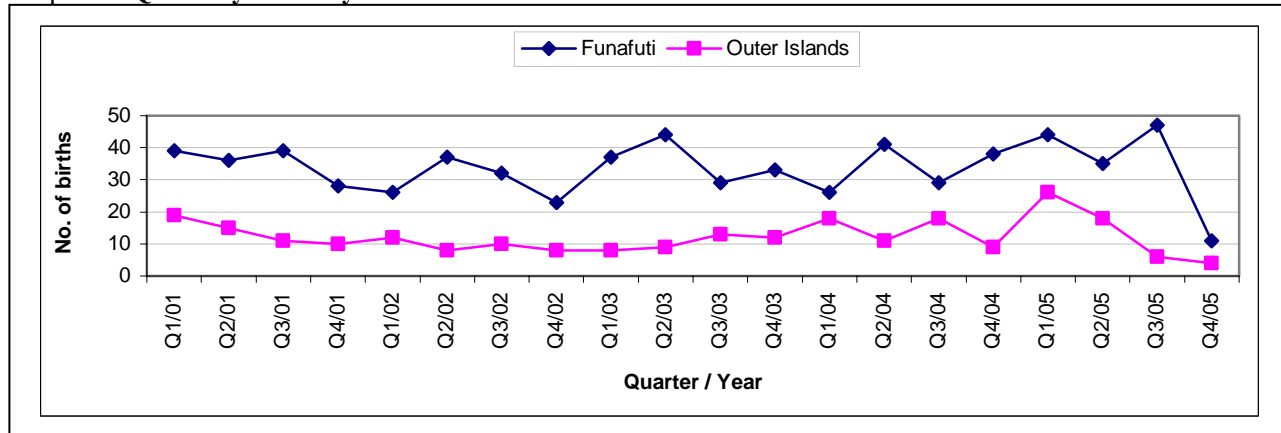


4. HEALTH

4.1 BIRTHS

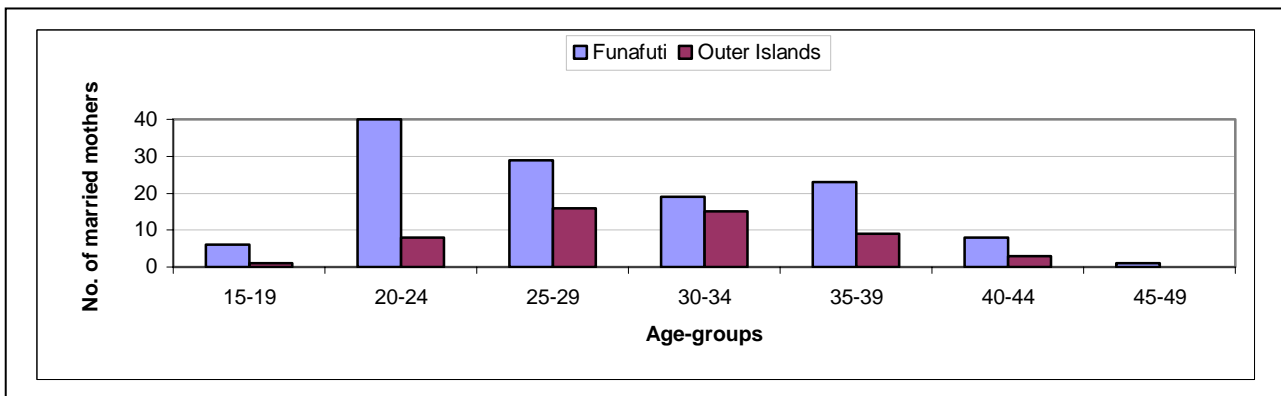
Graph 4.1 demonstrates very high number of births occurred on Funafuti compared to the Outer Islands. In 2005, the births in the Outer Islands decreases at all the quarters and for Funafuti, it drops to 11 births only at the fourth quarter of the year. (Refer to Table 4.1)

Graph 4.1: Quarterly births by islands



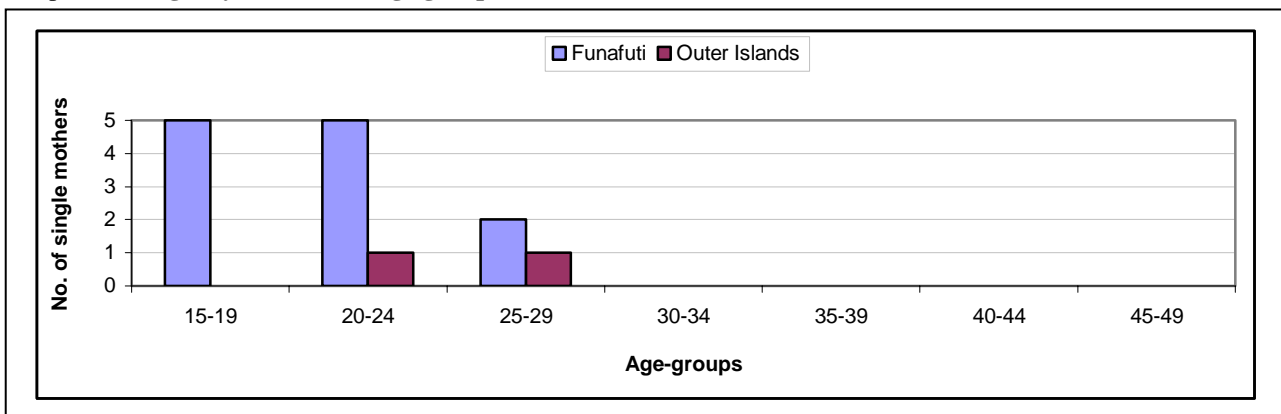
Graphs 4.2 indicate the age group 20–24 years as the most active for married mothers with counts of 39. (Refer to Tables 4.3)

Graph 4.2: Married mothers by islands and age groups – 2005



Graph 4.3 shows the age-group 15-19 and 20-24 years as the most active for single mothers.

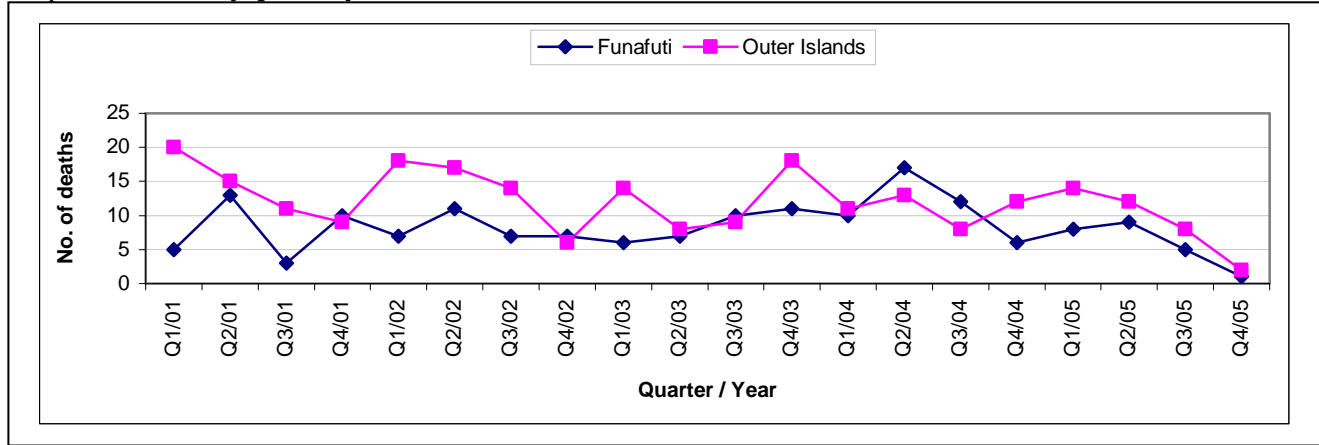
Graph 4.3: Single by islands and age groups – 2005



4.2 DEATHS

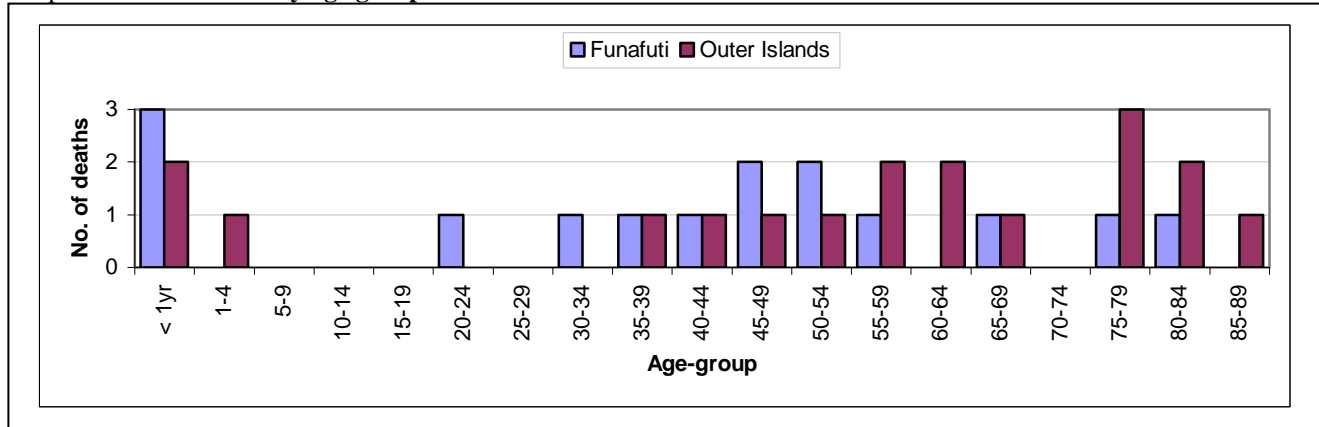
Graph 4.4 shows that more deaths occurred on Funafuti compared to the average number of deaths in the Outer Islands. The total number of deaths in 2004 and 2005 decreased from 89 to 59. (Refer to Table 4.4)

Graph 4.4: Deaths by quarter/year and island of occurrence

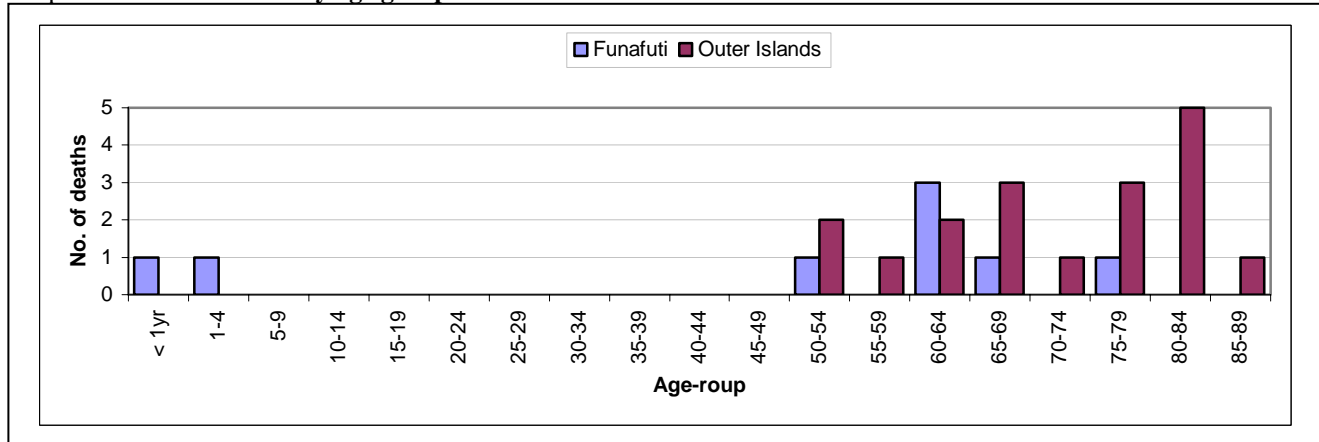


Graph 4.5 and Graph 4.6 indicates males die at an earlier age compared to female. The year 2005 records more male deaths compared to female with 33 and 26 deaths respectively. (Refer to Table 4.7)

Graph 4.5: Male deaths by age groups and island – 2005



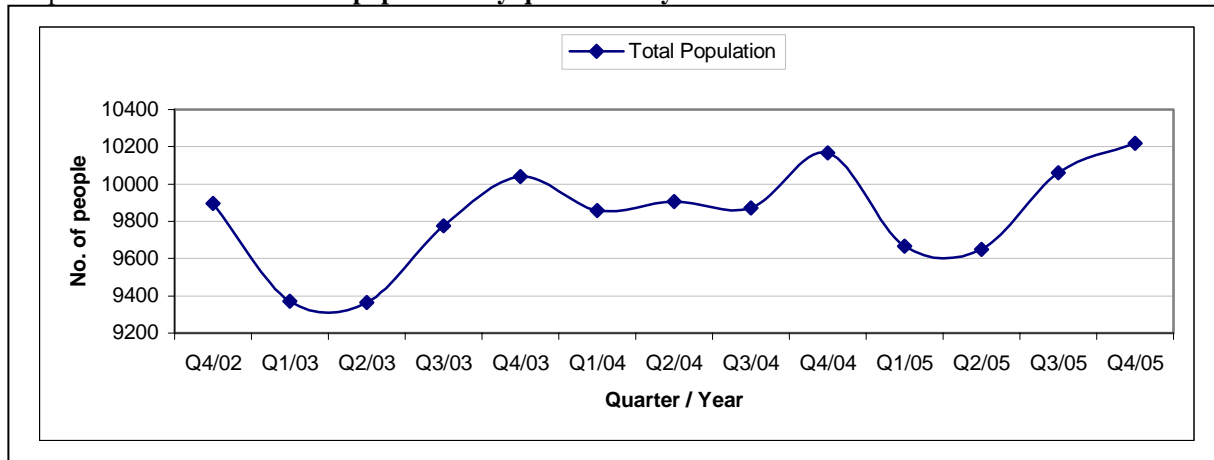
Graph 4.6: Female deaths by age groups and island – 2005



5. POPULATION

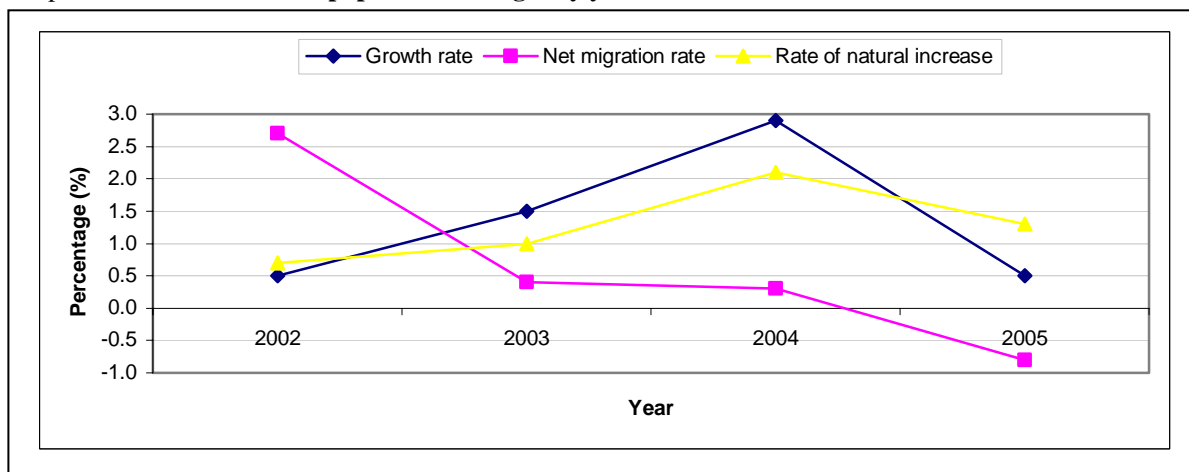
Graph 5.1 shows a slightly increase in the total population by 51 people from 2004 to 2005. It also shows an increase in the population at all the quarters for 2005. (Refer to Table 5.1)

Graph 5.1: Resident estimated population by quarter and years



Graph 5.2 shows the migration rate of -0.8% indicating that in 2005, more people are going overseas rather than those arriving the country. (Refer to Table 5.2 and 5.3)

Graph 5.2: Rates of resident population changes by years

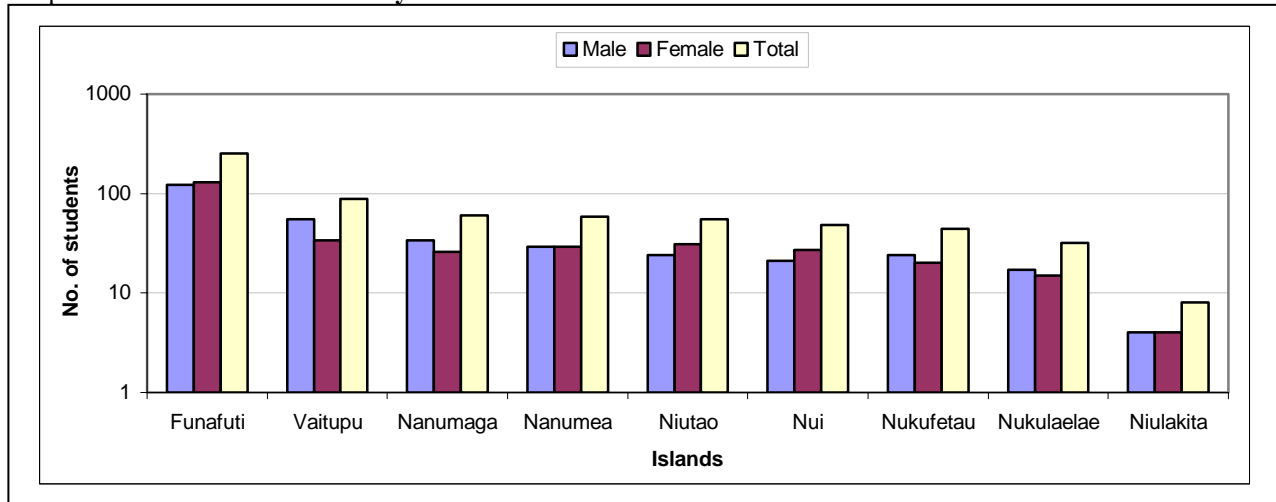


6. EDUCATION

6.1 PRE-SCHOOL

Funafuti has the highest enrolment as provided in Graph 6.1 with 253 students and Niulakita has the least enrolment of 8 students only. At this level, there are more boys compared to girls with 331 and 316 respectively. (Refer to Table 6.1)

Graph 6.1: Pre-school enrolment by islands - 2005



6.2 PRIMARY SCHOOL

Graph 6.2 expresses the enrolment trend of Primary school level is at an increasing rate with more boys than girls at every year since 1992. From 2004 to 2005, the enrolment for males increases by 1.4% from 1035 to 1049 and the females decreases by 1.4% from 975 to 961. (Refer to Table 6.2)

Graph 6.2: Primary school enrolment by year and sex.

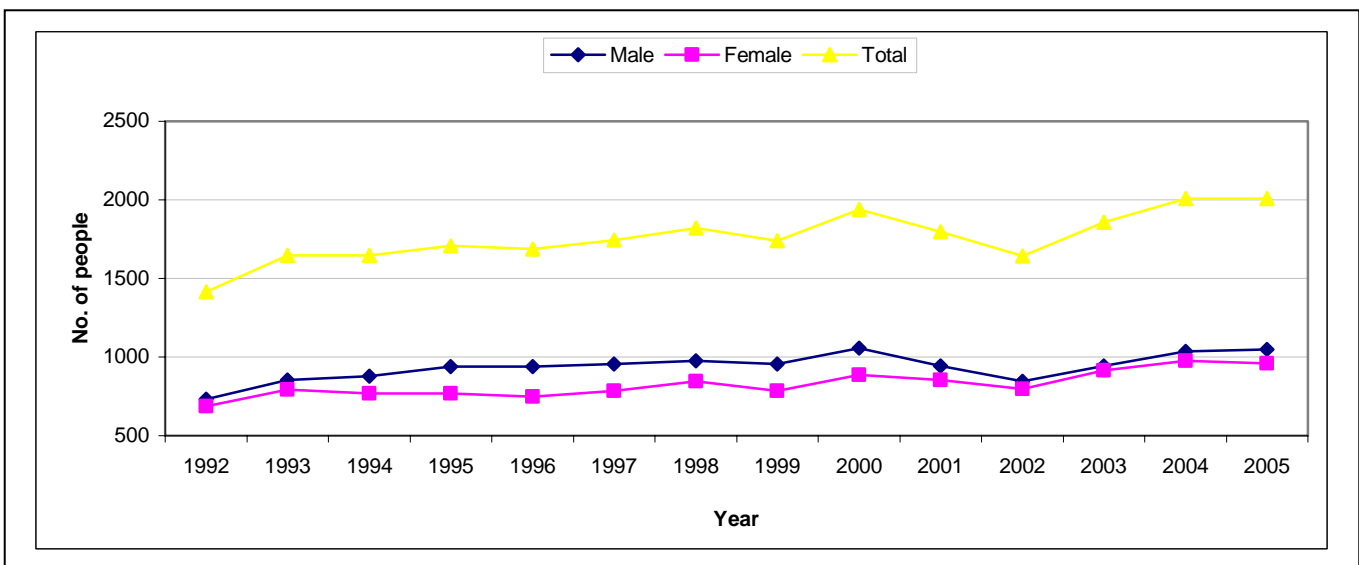


Figure 6.3: Pass rate (%) for Year 8 Motufoua Entrance Examination - 2005

Schools	Males	Females	Total
Faikimua	60	80	70
Kaumaile	13	24	18
Lotohoni	27	67	41
Nauti	28	52	40
SDA	14	67	30
Tolise	6	23	12
Tutasi	15	45	29
Uepele	33	58	48
Lotoalofa	0	0	-
Vaipuna	92	100	95
Total	37	63	37

Figure 6.4: Counts of Qualification for Primary School teachers - 2005

Qualification	Total
B Ed [primary]	10
Cert Ed [primary]	48
Dip Ed [primary]	34
Dip TESL	3
ECE Certificate External	4
PSSC	4
Total	103

According to the results of the 2005 Motufoua Entrance Examination sat by all the primary schools, 37% (total weighted average for passing rate) of the Year 8 students with 115 students passed the exam and was given the opportunity to accommodate at Motufoua Secondary School in 2006. The performance for the Kaumaile, SDA, Tolise and Tutasi primary school falls below the weighted average and hence requiring improvement. The students from the Vaipuna school show an outstanding performance with 20 out of 21 students pass the test (Refer to Table 6.3).

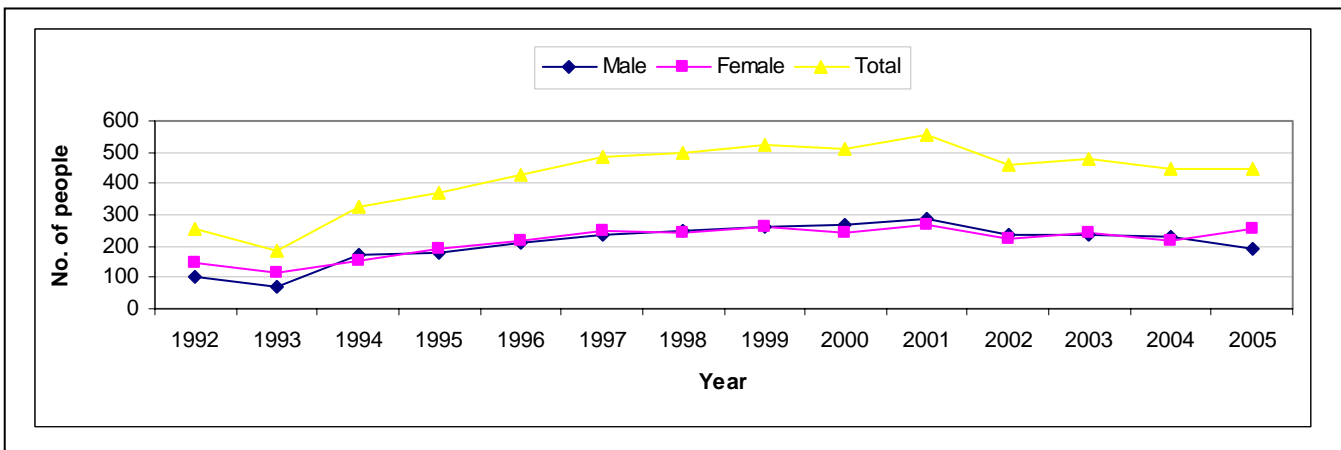
Figure 6.4 shows that only few of the primary school teachers do not have qualification. Most of them have certificate and diploma in primary teaching with 48 and 34 respectively.

6.3 SECONDARY SCHOOL

6.3.1 Motufoua Secondary School

Graph 6.5 shows a significant decline in the enrolment level at Motufoua Secondary School in 1992 and 1993 with a rapid increase following these years. The decline was a result of the discontinuing intake of Form 1 and 2 as they are accommodated at Primary School level. The increase in the enrolment number starting in 1993 resulted in the introduction of the government policy established at the time in which all the first year students are absorbed into the system without sitting for an entrance exam. The enrolment in 2001 recorded the highest resulted in another practice where there were no school fees for the students. The entrance examination with school fees of \$50 per term was introduced again in 2003, which is obvious in the small number enrolled in 2004. In 2005, the majority for first year students were females compared to males with 256 and 192 respectively. (Refer to Table 6.3)

Graph 6.5: Motufoua Secondary School enrolment by year and sex.



Graph 6.6 shows that in 1995 to 2003, the failure rate is higher than the passing rate for the Fiji Junior Examination at MSS. The passing rate started to exceed the failure rate and increasing in 2003. An outstanding progress of the students depicts in 2005 with 86% pass and 14% fail. (Refer to Table 6.4)

Graph 6.6: Fiji Junior results (Motufoua Secondary School)

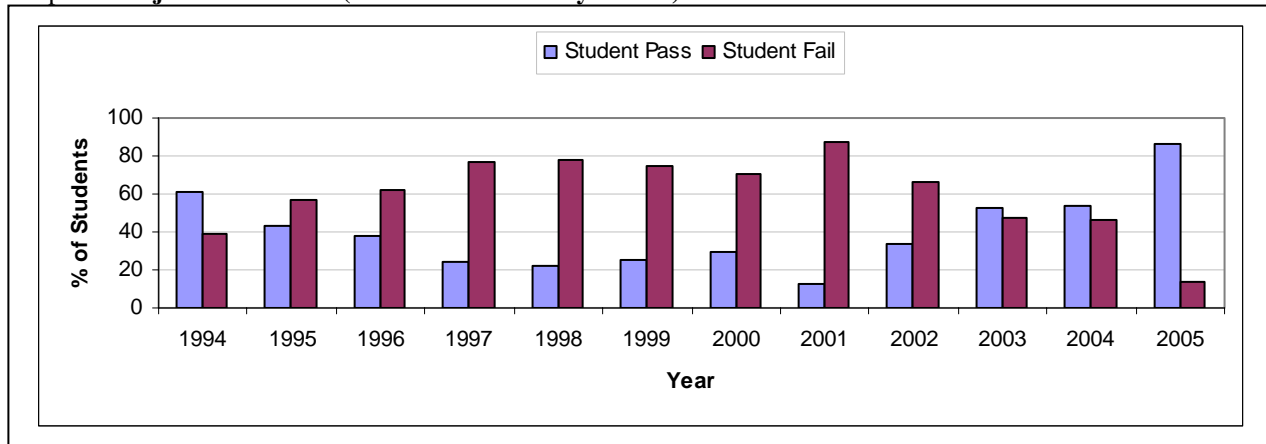


Fig 6.7: Tuvalu School Certificate Examination results (MSS) - 2005

Status	Total	Percentage
Fail	38	31
Pass	83	69
Total	121	100

Fig 6.8: Pacific Senior School Certificate Examination results (MSS) - 2005

Status	Female	Male	Total	Percentage
Fail	30	19	49	58
Pass	19	17	36	42
Total	49	36	85	100

Fig 6.9: Counts of Qualification for MSS teachers

Qualifications	Number	Percentage
Graduates	15	37
Undergraduates	2	5
Dip in Secondary Education	19	46
Dip in Primary Education	5	12
Total	41	100

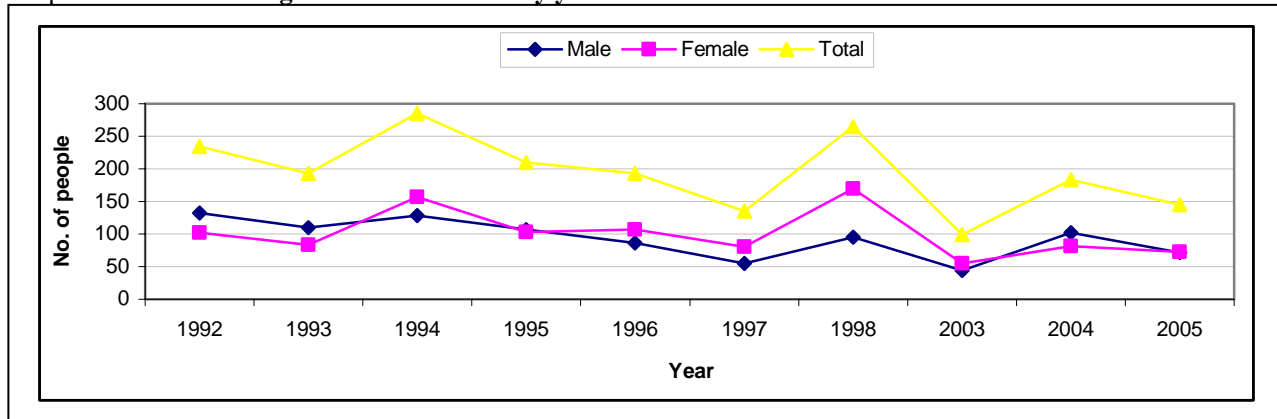
Referring to the Tuvalu School Certificate Examination results for the year ended 2005, the majority of the Form 5 students have passed their final exam with 83 out of the aggregate 121 students. The PSSC results displayed in Figure 6.8 shows more female pass the exam compared to male with 49 and 36 students respectively. Again the majority of the Form 6 students passed the exam with 58% and 42% failed the exam.

Figure 6.9 indicate the school has all qualified teacher to operate the school. Note that 12% are the primary level skilled teachers accommodated at the school. This attributes to some of the qualified teacher have successfully find good jobs in Funafuti leaving some of the teacher's position of the school vacant. Those with diploma in secondary education record the highest with 46%.

6.3.2 Fetuvalu High School

Graph 6.10 shows the enrolment for Fetuvalu High School is decreasing over the last 13 years. The school ceased its operation in 1999 and started again in 2003 with Form 3 the only intake. The total enrolment for new students experienced a decrease of 20.7% from 2004 to 2005 with 72 boys and 73 girls. (Refer to Table 6.3)

Graph 6.10: Fetuvalu High School enrolment by year and sex.



Graph 6.11 shows the failure rate is higher than the passing rate for the Fiji Junior Examination sat by the Form 4 students of the school from 1995 to 1998. Figures for 1993 and 1994 were not available, while Fetuvalu High School was only up to Form 3 in 1991 and 1992. (Refer to Table 6.5).

Graph 6.11: Fiji Junior results (Fetuvalu High School)

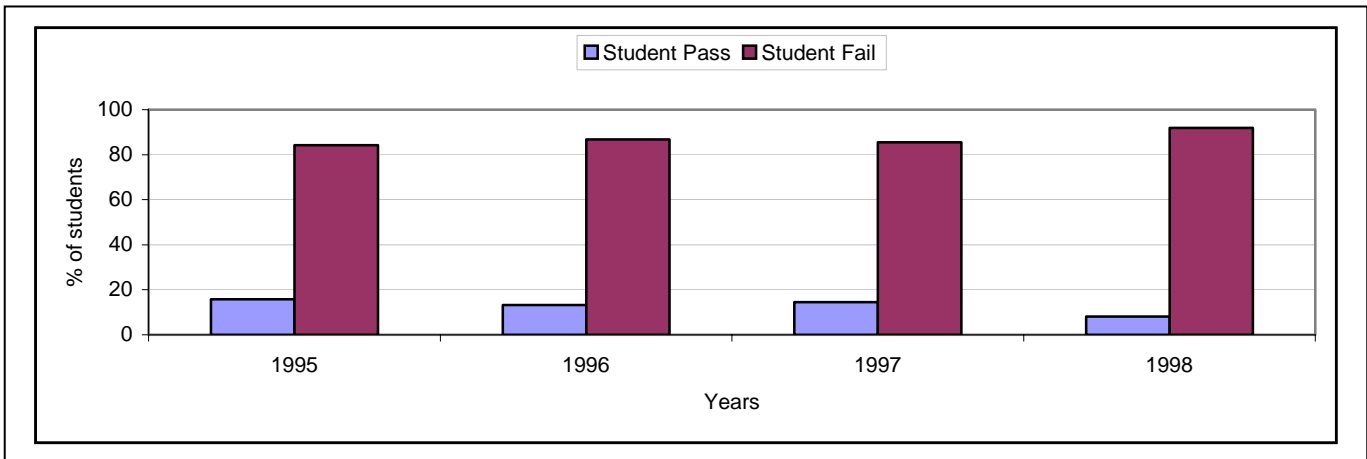


Figure 6.12: International Cambridge Examination Results - 2005 (Fetuvalu High School)

No. of subjects passed	Male	Female	Total
0	2	0	2
1	7	6	13
2	2	1	3
3	2	8	10
4	2	1	3
5	1	0	1
6	1	2	3
7	0	0	0
8	0	1	1
Total	17	19	36

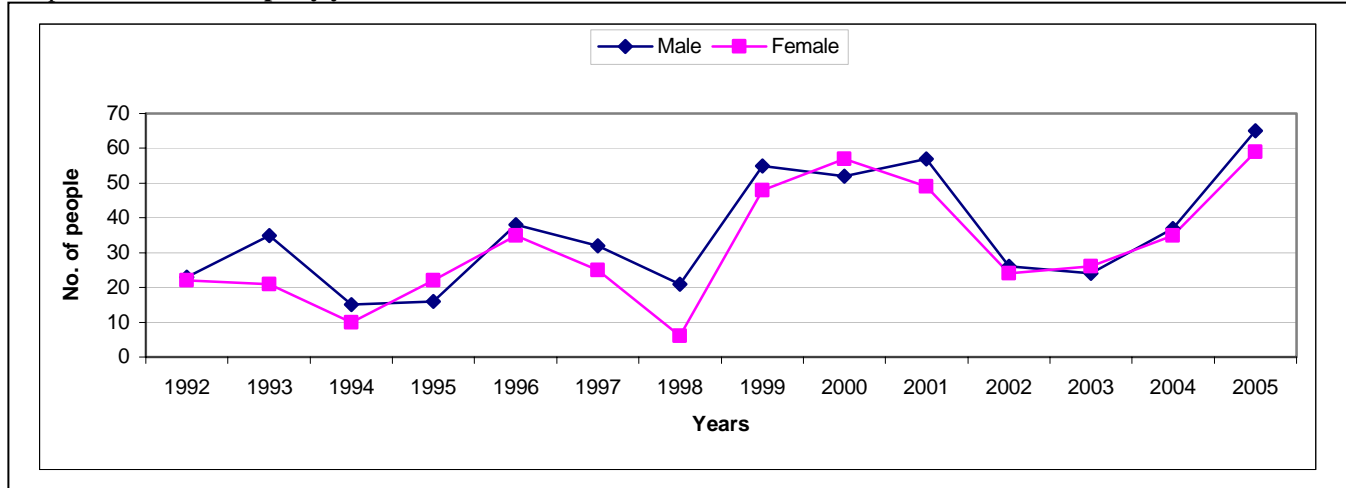
The International Cambridge Examination was sat by the Form 5 students starting in 2005. Figure 6.8 shows that 36 students were expected to sit the exam. However, 2 students did not sit the exam resulted in passing no subjects. Students have to pass at least 3 subjects in order to pass this test. Hence 50% at this level pass the exam and was allowed to continue on to Form 6. Most of the passing students are female compared to the boys with 12 and 6 respectively.

6.4 IN-SERVICE AND PRE-SERVICE TRAINING

This sections looks at the number of first year awardees in-service and pre-service trainings of Tuvalu.

Graph 6.13 shows that there are more males than females awarded with scholarships since 1992 with the exceptions of 1995, 2000 and 2003. (Refer to Table 6.6).

Graph 6.13: Scholarships by year and sex



Graph 6.14 shows that more trainings were awarded for pre-service as compared to in-service training since 1992 with the exception of 1998. In 2005, the number of students awarded with the in-service and pre-service scholarships is 42 and 82 respectively. (Refer to Table 6.6).

Graph 6.14: In-service and pre-service training by year

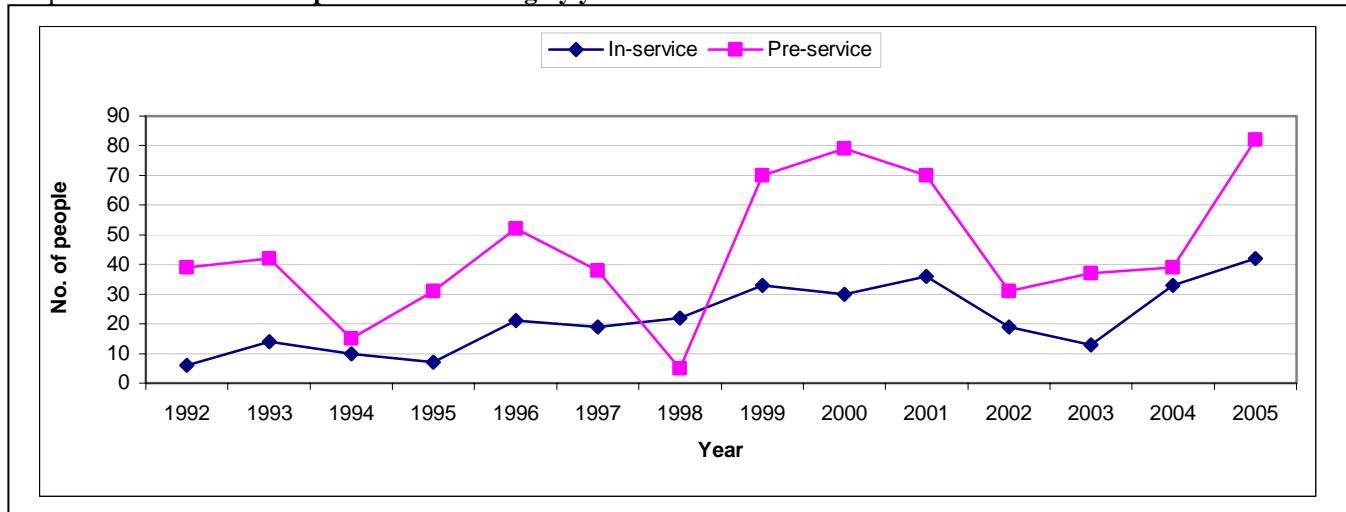
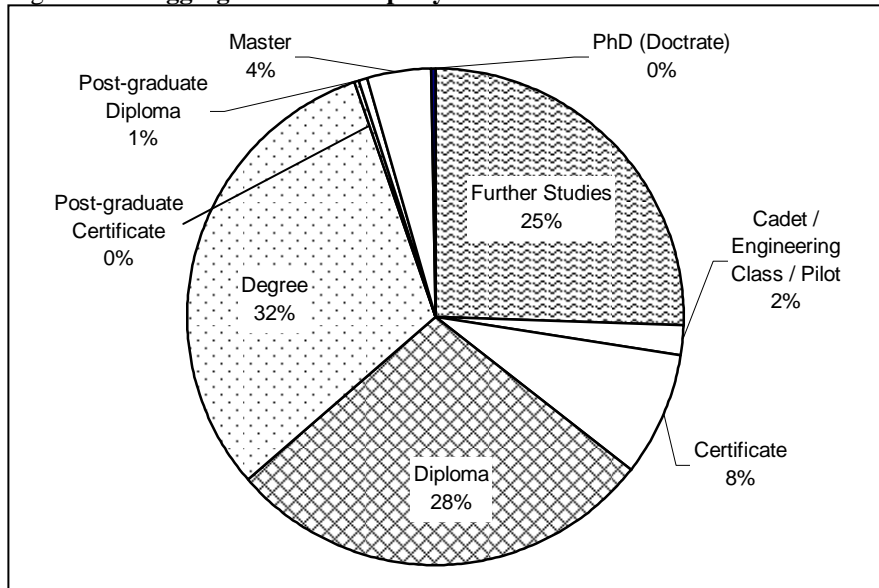


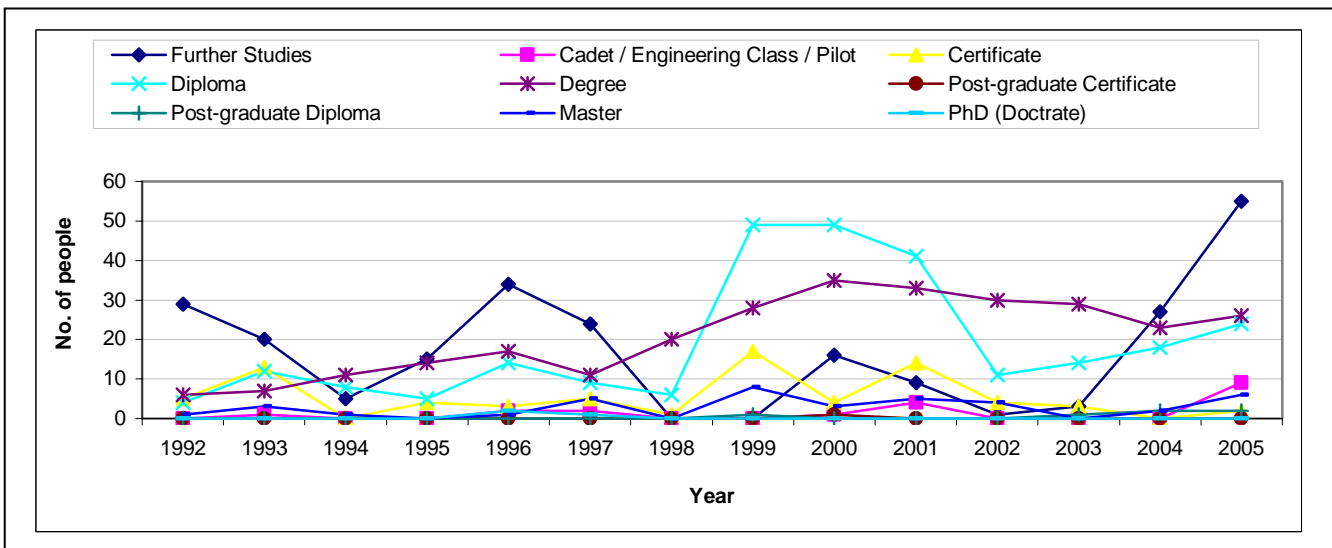
Figure 6.15 shows that from 1992-2005, the highest proportion of overseas training courses was dominated by student pursuing degree and diploma courses with 32% and 28% respectively. The number of student on **further studies** are mostly pre-service student with 25% who were undertaking Form 6 and 7 before taking up their proposed program of studies at tertiary institutions. (Refer to Table 6.7).

Figure 6.15: Aggregate scholarships by courses 1992-2005



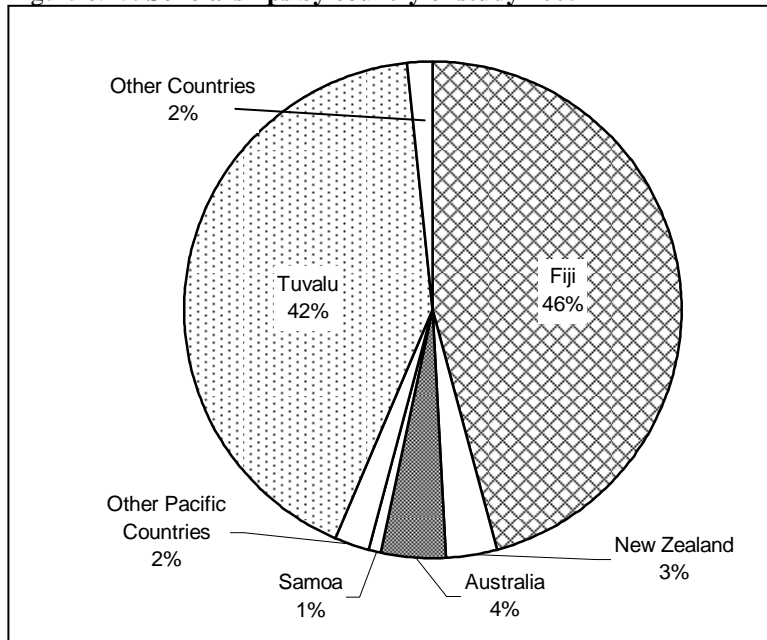
Graph 6.16 depicts the number of students pursuing diploma and degree levels is increasing over the years. The increase in the number of further studies from 2003 to 2005 attribute to pre-service students pursuing foundation programs at USP starting in 2003. (Refer to Table 6.7).

Graph 6.16: Tuvalu scholarships by level of studies and year



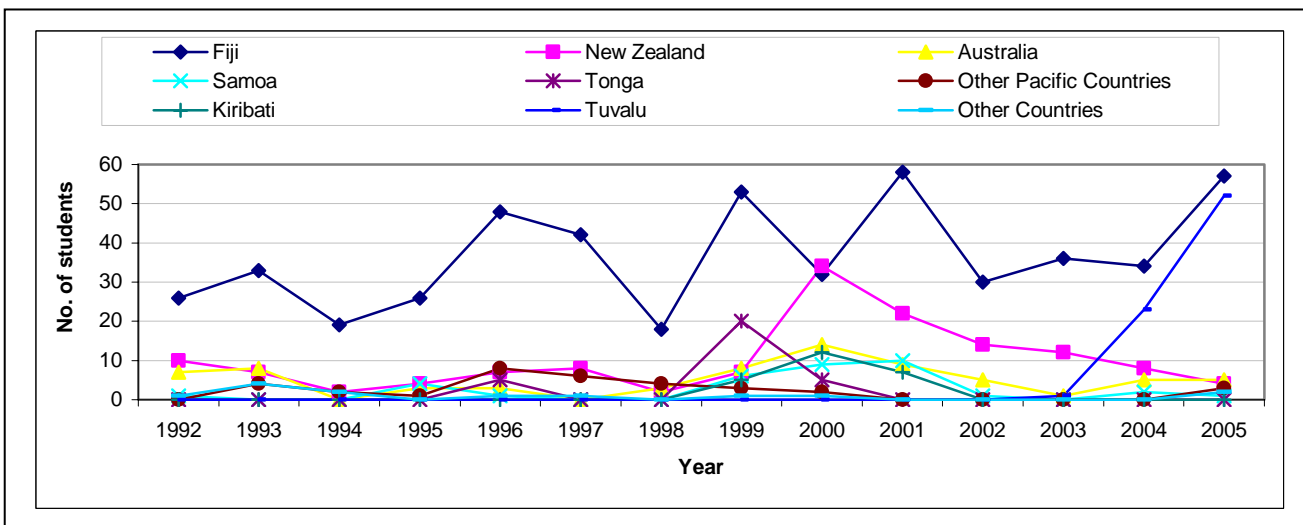
In Figure 6.17, the majority of the students in 2005 are studying in Fiji and Tuvalu with 88% followed by Australia and New Zealand with 4% and 3% respectively. (Refer to Table 6.8)

Figure 6.17: Scholarships by country of study 2005



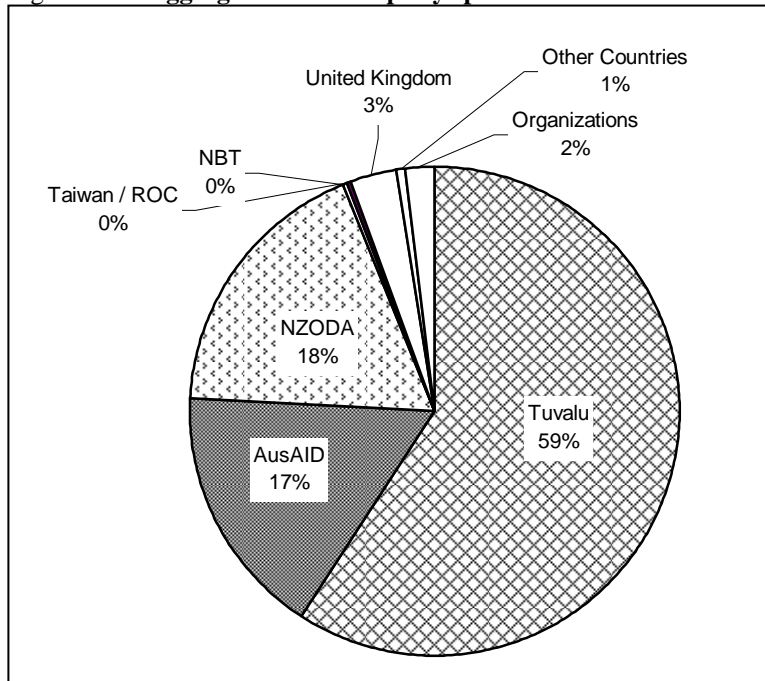
Graph 6.18 shows the number of students studying at the mentioned countries. The year 2004 marks the beginning of scholarship students to study Foundation courses at the USP centre in Tuvalu. (Refer to Table 6.8).

Graph 6.18: Country of study by year



In Figure 6.19, from the aggregate total of 935 awards, the government of Tuvalu had funded the highest number of students, followed by our traditional sponsors New Zealand and Australia with 18% and 17% respectively. (Refer to Table 6.9)

Figure 6.19: Aggregate scholarships by sponsors 1992-2005



Graph 6.20 presents that between 1992 and 1998, most of the students were funded by Australia and New Zealand. Starting in 1999 onwards the majority of the students were funded by the government of Tuvalu as compared to Australia and New Zealand. (Refer to Table 6.9)

Graph 6.20: Major sponsors of students by year.

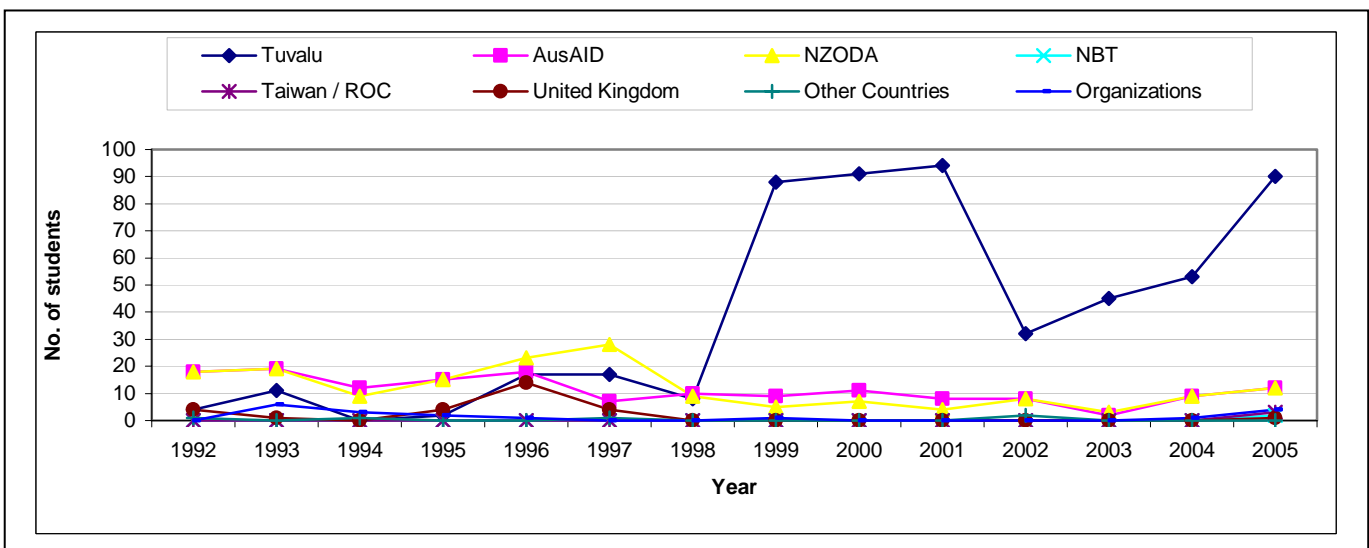


Figure 6.21: Counts of graduates through pre-service scholarships by years and sex

Year	Male	Female	Total
2001	14	25	39
2002	13	27	40
2003	13	17	30
2004	1	7	8
2005	3	3	6

Most of the students who completed their studies through the in-service scholarships from 2001 to 2005 are females. Almost all the pre-service graduates in 2004 were females compared to males with 7 and 1 students respectively. The total number of the per-service graduates started to decrease in 2004 from 30 to 8 students only.

Figure 6.22 illustrates that the majority of the students completing their studies through the in-service scholarships are males compared to females. (Refer to Table 6.10)

Figure 6.22: Expected number of graduates through the in-service trainings by sex and course of study, 2000-2005

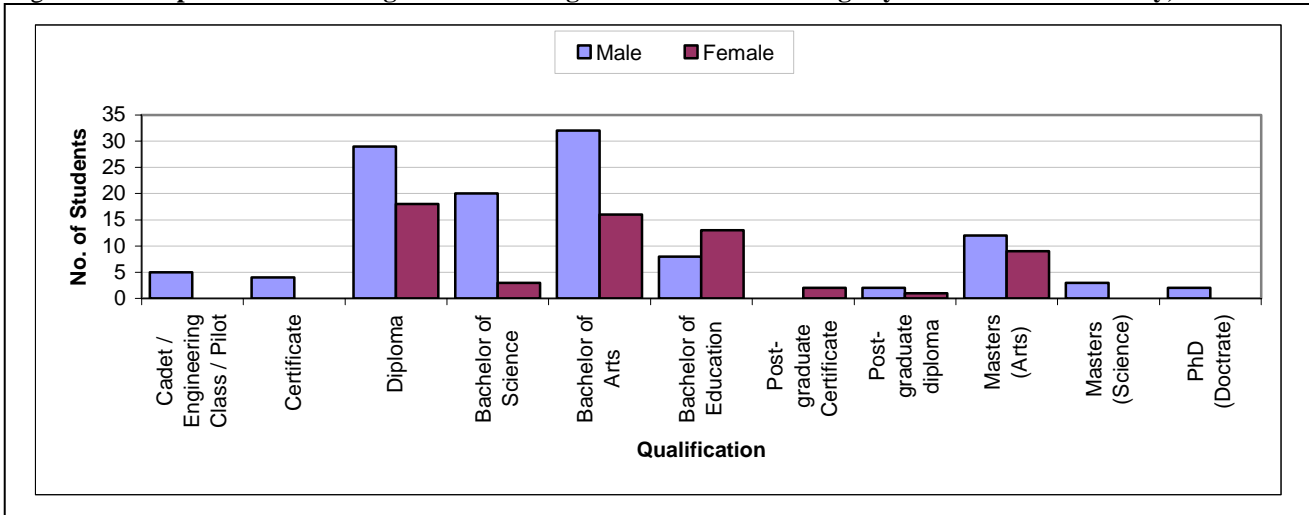
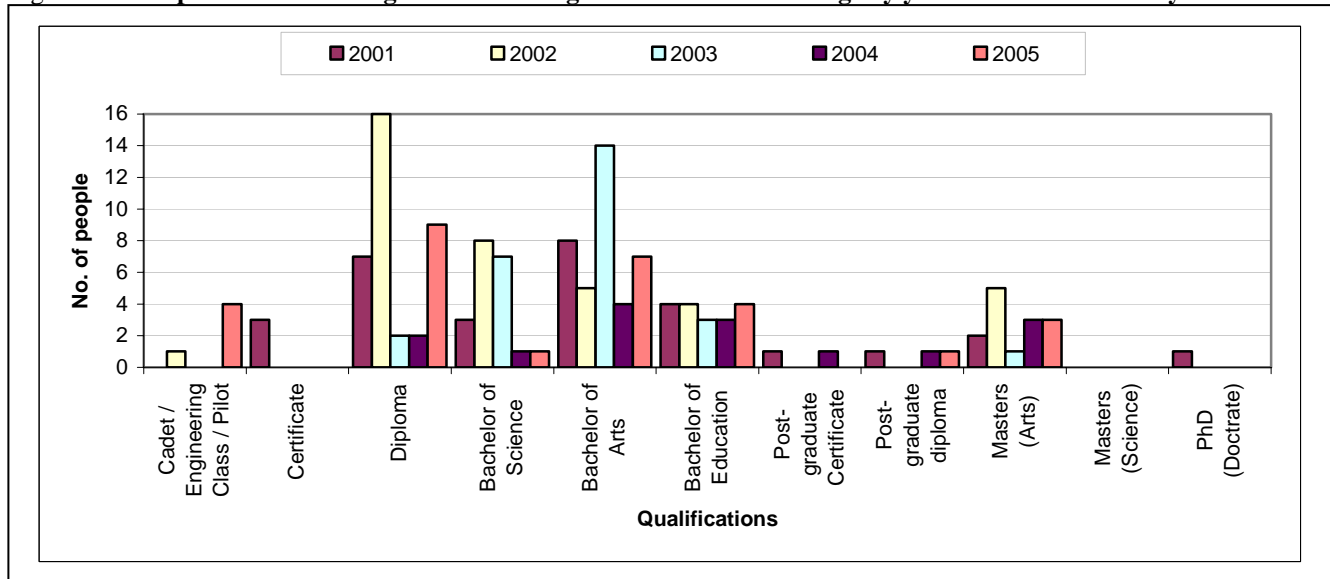


Figure 6.23 shows most of the students expecting to graduate in 2001 to 2005 are the students achieving diploma, Bachelor of Arts and Science programs with 47, 23 and 48 students. (Refer to Table 6.10)

Figure 6.23: Expected number of graduates through the in-service trainings by year and course of study

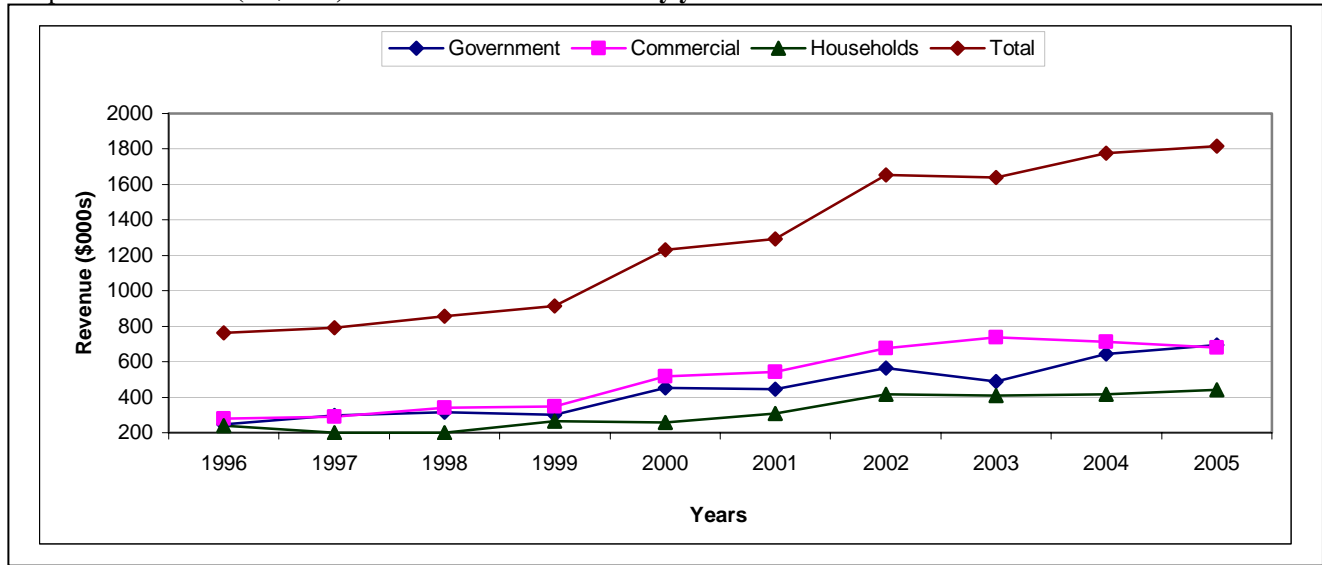


7. ELECTRICITY

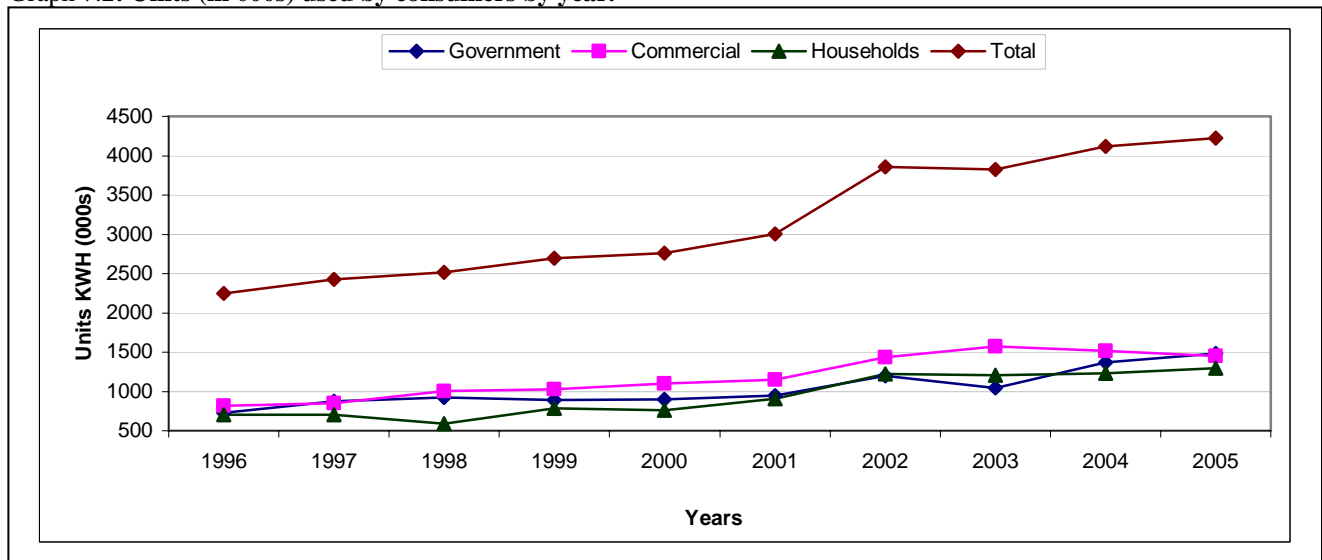
This section looks at the amount of electricity consumed and the amount of revenue derived from its use.

A steady increase in the aggregate consumption of electricity over the last 9 years depicted by Graph 7.1 and 7.2. In the past years, most of the revenue was from the commercials followed by the government and the households. In 2005, the government consumption accounted for 39% of the revenue, 37% from the commercials and finally 24% from households. The Tuvalu electricity has a total annual receipt of \$1.8 from the consumption of electricity.

Graph 7.1: Revenue (in \$000s) received from consumers by year.



Graph 7.2: Units (in 000s) used by consumers by year.



8. CRIME

Fig 8.1 shows a total of 3913 cases for the year 2005. Most of the cases are still pending by the end of the year with 2030 cases and 14% have been discharged. The males dominant the females in most of the crimes except for the Bye laws crime.

Figure 8.1 Annual crime cases - 2005

Crime	Male	%	Female	%	Acquitted / Discharge	Pending	Total
Penal Code	59	9.6	30	5.9	75	273	452.5
Traffic Act	343	55.7	231	45.3	350	1486	2511
Alcoholic Drinks Act	24	3.9	4	0.8	74	40	146.7
Bye laws	11	1.8	18	3.5	1	0	35.32
Other Act	179	29.1	227	44.5	57	231	767.6
Total	616	100	510	100	557	2030	3913

APPENDIX

Table 1.1 Tuvalu Consumers Price Index by quarters

Quarter	Tuvalu Consumers Price Index (Sept_2003 = 1000)	Annual Inflation Rate	Quarterly % Change	Annual Average % Change
Mar-01	880.3	-1.8	-1.9	2.2
Jun-01	898.5	-0.5	2.1	0.7
Sep-01	930.9	3.9	3.6	0.7
Dec-01	939.4	4.6	0.9	1.5
Mar-02	946.0	7.5	0.7	3.9
Jun-02	987.3	9.9	4.4	6.5
Sep-02	960.5	3.2	-2.7	6.3
Dec-02	939.6	0.0	-2.2	5.1
Mar-03	960.1	1.5	2.2	3.6
Jun-03	999.3	1.2	4.1	1.5
Sep-03	1000.0	4.1	0.1	1.7
Dec-03	1002.2	6.7	0.2	3.4
Mar-04	1009.2	5.1	0.7	4.3
Jun-04	1015.4	1.6	0.6	4.4
Sep-04	1023.7	2.4	0.8	3.9
Dec-04	1023.8	2.2	0.004	2.8
Mar-05	1036.1	2.7	1.2	2.2
Jun-05	1050.8	3.5	1.4	3.5
Sep-05	1052.5	2.8	0.2	2.8
Dec-05	1063.9	3.9	1.1	3.2

Table 1.2 Quarterly indexes of sub-groups

Quarter	Food	Alcohol & Tobacco	Clothing & Textiles	Transport	Housing	Miscellaneous	ALL ITEMS
Mar-01	844.9	1039.8	729.8	967.3	792.6	1018.4	880.3
Jun-01	874.7	1039.8	817.2	967.3	792.6	1002.2	898.5
Sep-01	914.8	1049.2	823.8	1043.3	807.3	1009.4	930.9
Dec-01	928.3	1049.2	845.4	1043.3	809.1	1013.0	939.4
Mar-02	916.3	1049.2	825.2	1043.3	807.3	1144.7	946.0
Jun-02	962.6	993.4	1057.9	1001.5	990.7	1108.9	987.3
Sep-02	912.6	1007.4	1004.0	1002.2	988.3	1103.2	960.5
Dec-02	909.2	991.6	910.7	981.3	1004.1	1001.6	939.6
Mar-03	964.8	997.8	913.8	899.5	982.4	1048.6	960.1
Jun-03	1003.6	993.0	992.6	999.4	998.2	1068.7	999.3
Sep-03	1000.0	1000.0	1000.0	1000.0	1000.0	1000.0	1000.0
Dec-03	1004.5	1000.0	1014.1	1000.8	996.5	1005.5	1002.2
Mar-04	1016.1	1002.4	1003.1	1005.9	998.1	1017.4	1009.2
Jun-04	1019.9	1055.1	998.0	988.7	1007.8	1008.6	1015.4
Sep-04	1023.2	1048.0	999.1	1017.7	1008.4	1034.1	1023.7
Dec-04	1026.9	1058.4	989.7	1001.8	1008.9	1035.7	1023.8
Mar-05	1052.8	1062.7	977.5	992.5	1021.4	1050.7	1036.1
Jun-05	1075.5	1094.5	1004.9	988.5	1040.4	1036.6	1050.8
Sep-05	1088.7	1089.1	1029.4	988.2	1029.7	1024.1	1052.5
Dec-05	1093.6	1107.0	1038.5	1006.1	1054.7	1018.4	1063.9

Table 2.1 Total merchandise trade CIF (AUD) by years

Year ended	Exports	Imports	Trade Balance
1995	221,587	7,695,814	-7,474,227
1996	34,139	7,101,989	-7,067,850
1997	162,423	10,190,421	-10,027,998
1998	253,887	15,748,964	-15,495,077
1999	183,015	12,466,323	-12,283,308
2000	16,800	8,882,707	-8,865,907
2001	31,737	6,725,096	-6,693,359
2002	275,868	20,362,342	-20,086,474
2003	147,124	24,043,441	-23,896,317
2004	181,606	15,498,900	-15,317,294
2005	80,403	16,908,333	-16,827,930

Table 2.2 Total merchandise trade CIF (AUD) by months and years

Months	2002			2003		
	Export	Imports	Balance	Export	Imports	Balance
January	17,344	1,829,187	(1,811,843)	17,344	1,829,187	(1,811,843)
February	18,922	1,106,524	(1,087,602)	18,922	1,106,524	(1,087,602)
March	17,419	1,145,863	(1,128,444)	17,419	1,145,863	(1,128,444)
April	60,147	1,717,984	(1,657,837)	60,147	1,717,984	(1,657,837)
May	12,009	920,866	(908,857)	12,009	920,866	(908,857)
June	14,520	1,867,220	(1,852,700)	14,520	1,867,220	(1,852,700)
July	21,470	1,488,846	(1,467,376)	21,470	1,488,846	(1,467,376)
August	7,420	2,733,829	(2,726,409)	7,420	2,733,829	(2,726,409)
September	27,247	1,313,351	(1,286,104)	27,247	1,313,351	(1,286,104)
October	5,950	1,547,478	(1,541,528)	5,950	1,547,478	(1,541,528)
November	23,666	2,273,690	(2,250,024)	23,666	2,273,690	(2,250,024)
December	49,754	2,417,504	(2,367,750)	49,754	2,417,504	(2,367,750)
Total	275,868	20,362,342	(20,086,474)	275,868	20,362,342	(20,086,474)

Months	2004			2005		
	Export	Imports	Balance	Export	Imports	Balance
January	13,630	1,123,392	(1,109,762)	15,347	1,489,851	(1,474,504)
February	25,211	595,202	(569,991)	3,020	993,234	(990,214)
March	674	2,208,685	(2,208,011)	300	1,559,593	(1,559,293)
April	6,969	993,172	(986,203)	1,410	716,297	(714,887)
May	2,227	857,929	(855,702)	6,595	1,874,152	(1,867,557)
June	33,641	1,619,496	(1,585,855)	15,095	955,577	(940,482)
July	2,852	1,359,803	(1,356,951)	1,042	1,812,368	(1,811,326)
August	2,050	1,439,939	(1,437,889)	21,771	2,472,337	(2,450,566)
September	2,807	656,922	(654,115)	11,190	997,090	(985,900)
October	2,015	1,935,785	(1,933,770)	1,310	1,332,742	(1,331,432)
November	14,881	870,021	(855,140)	1,440	530,972	(529,532)
December	74,649	1,838,554	(1,763,905)	1,883	2,174,120	(2,172,237)
Total	181,606	15,498,900	(15,317,294)	80,403	16,908,333	(16,827,930)

Table 2.3 Quarterly import values by major commodities

Year	Qtr	Food	Alcohol & Tobacco	Construction	Fuel	Clothing	Others	Total
1995	Q1	696,369	125,566	416,003	221,781	148,283	1,146,875	2,754,877
	Q2	497,351	111,065	493,071	225,866	52,902	513,215	1,893,470
	Q3	465,229	58,291	527,262	153,662	108,848	520,604	1,833,896
	Q4	445,513	125,739	154,643	9,142	21,855	456,679	1,213,571
	Total	2,104,462	420,661	1,590,979	610,451	331,888	2,637,373	7,695,814
1996	Q1	27,738	18,009	41,339	1,928	4,160	546,716	639,890
	Q2	345,240	81,467	292,679	13,438	46,331	934,269	1,713,424
	Q3	459,384	46,727	533,008	486,682	50,141	1,663,611	3,239,553
	Q4	542,941	120,527	260,009	138,752	24,415	422,478	1,509,122
	Total	1,375,303	266,730	1,127,035	640,800	125,047	3,567,074	7,101,989
1997	Q1	482,000	127,054	387,732	34,543	172,469	1,288,573	2,492,371
	Q2	643,431	111,867	177,829	230,639	58,429	781,695	2,003,890
	Q3	1,170,032	126,086	827,653	593,509	98,470	1,016,346	3,832,096
	Q4	643,673	136,505	274,537	238,609	69,069	499,671	1,862,064
	Total	2,939,136	501,512	1,667,751	1,097,300	398,437	3,586,285	10,190,421
1998	Q1	601,525	74,211	385,730	417,146	199,284	1,397,706	3,075,602
	Q2	1,067,153	176,165	522,277	301,026	202,614	988,192	3,257,427
	Q3	1,248,716	261,749	900,518	679,090	593,997	2,081,985	5,766,055
	Q4	802,045	154,294	737,329	399,162	305,758	1,251,292	3,649,880
	Total	3,719,439	666,419	2,545,854	1,796,424	1,301,653	5,719,175	15,748,964
1999	Q1	665,153	89,006	474,471	224,445	56,804	1,278,164	2,788,043
	Q2	539,066	77,765	658,911	274,090	81,309	874,578	2,505,719
	Q3	1,064,515	270,373	452,483	236,545	134,866	1,704,480	3,863,262
	Q4	1,042,478	202,671	488,064	414,997	167,969	993,120	3,309,299
	Total	3,311,212	639,815	2,073,929	1,150,077	440,948	4,850,342	12,466,323
2000	Q1	1,210,852	176,847	482,545	290,437	65,527	1,514,647	3,740,855
	Q2	298,065	22,901	125,116	787	9,222	344,093	800,184
	Q3	83,469	33,498	12,032		7,474	64,022	200,495
	Q4	1,186,143	246,307	530,894	380,847	212,494	1,584,488	4,141,173
	Total	2,778,529	479,553	1,150,587	672,071	294,717	3,507,250	8,882,707
2001	Q1	355,491	89,308	51,073	23,005	42,103	311,419	872,399
	Q2	87,189	6,381	9,606	322	37,431	25,729	166,658
	Q3	90,208	14,881	3,983	189	12,324	64,641	186,226
	Q4	1,234,731	251,615	996,036	102,841	237,791	2,676,799	5,499,813
	Total	1,767,619	362,185	1,060,698	126,357	329,649	3,078,588	6,725,096
2002	Q1	1,070,327	164,431	838,715	536,651	66,781	1,404,669	4,081,574
	Q2	998,999	157,812	1,096,637	691,082	154,228	1,407,312	4,506,070
	Q3	1,123,611	281,564	1,852,584	517,941	135,361	1,624,965	5,536,026
	Q4	1,595,498	327,675	1,367,725	531,169	180,412	2,236,193	6,238,672
	Total	4,788,435	931,482	5,155,661	2,276,843	536,782	6,673,139	20,362,342
2003	Q1	1,134,621	231,027	2,404,826	629,689	246,945	2,488,401	7,135,509
	Q2	1,415,349	268,243	1,291,702	746,497	237,192	2,168,091	6,127,074
	Q3	1,460,797	274,425	761,470	560,099	241,226	2,953,715	6,251,732
	Q4	1,260,557	142,632	854,828	398,342	170,148	1,702,619	4,529,126
	Total	5,271,324	916,327	5,312,826	2,334,627	895,511	9,312,826	24,043,441
2004	Q1	1,016,627	204,767	573,453	646,416	141,128	1,344,888	3,927,279
	Q2	1,100,228	260,416	636,675	120,708	61,626	1,290,944	3,470,597
	Q3	935,396	163,787	622,203	788,331	78,078	868,869	3,456,664
	Q4	1,164,894	297,107	650,673	679,197	178,802	1,673,687	4,644,360
	Total	4,217,145	926,077	2,483,004	2,234,652	459,634	5,178,388	15,498,900
2005	Q1	1,023,882	96,122	216,077	826,925	212,476	1,667,196	4,042,678
	Q2	1,249,011	149,349	350,476	647,661	105,013	1,044,517	3,546,026
	Q3	1,915,086	251,163	468,814	762,269	253,312	1,631,151	5,281,795
	Q4	1,068,740	192,410	385,688	1,309,477	188,391	893,128	4,037,834
	Total	5,256,718	689,044	1,421,055	3,546,332	759,192	5,235,991	16,908,333

Table 2.4 Total imports CIF (AUD) from top twenty five countries by years

Country	2005	2004	2003	2002	2001	2000	1999	1998	1997	1996	1995	1994	1993
Australia	5,706,461	6,335,728	8,704,261	7,065,044	2,477,364	3,452,734	4,797,274	5,728,845	3,658,116	2,329,723	2,982,466	3,987,773	1,402,040
Fiji	3,332,692	3,647,871	7,778,676	5,979,505	1,876,149	2,468,491	4,073,180	5,335,307	3,028,195	1,390,462	1,989,775	3,205,484	640,364
New Zealand	1,676,471	2,173,906	2,885,638	2,826,987	1,064,438	1,201,956	1,454,625	1,246,644	947,041	891,127	841,775	2,021,671	549,836
Japan	620,155	803,048	1,592,560	2,096,685	545,908	434,634	772,322	1,369,824	1,606,163	1,944,777	621,179	1,549,959	100,984
China	869,638	750,673	835,610	747,191	227,628	541,094	265,781	570,355	313,223	164,083	349,491	406,255	56,675
Singapore	2,964,119	424,942	155,046	278,794	40,287	32,169	56,940	93,328	2,131	3,298	237,662	269,640	-
Nauru	-	-	55	219,970	-	-	65,665	44,854	130,029	80,817	140	14,782	490
Republic of Korea	156,280	181,480	343,530	203,205	99,730	129,812	71,041	178,263	59,065	3,703	104,861	126,649	35,939
Thailand	173,379	77,963	129,795	149,524	37,030	216,657	114,270	119,923	30,603	1,156	21,880	66,406	-
Taiwan	92,208	172,103	65,058	130,526	56,046	10,755	1,378	222,392	79,259	40,452	41,249	123,163	8,919
USA	34,576	272,104	298,781	117,254	10,913	36,547	38,071	104,673	56,004	66,049	30,471	80,416	-
Finland	39,800	1,153	10,284	87,916	-	-	111,137	63,957	53,286	-	-	3,352	-
Indonesia	220,525	113,474	220,345	82,317	60,126	100,717	60,984	96,714	39,969	17,239	56,799	93,303	1,859
Malaysia	109,156	32,382	293,156	69,889	35,673	44,751	143,409	90,303	12,897	3,015	46,453	37,467	21,700
United Kingdom	24,395	3,768	-	69,233	2,316	3,222	19,896	140,163	14,782	7,676	222,299	415,156	10,488
Hong Kong	56,494	31,473	223,353	53,142	55,838	84,421	128,547	180,642	28,686	60,973	43,037	29,199	33,381
Vanuatu	16,726	46,567	36,162	50,351	-	-	1,337	318	-	-	-	1,016	-
Switzerland	130	9,942	3,060	45,861	1,601	4,466	18,350	74,333	-	120	879	36,937	119,819
India	25,617	37,197	22,074	20,807	50,729	7,958	16,323	33,884	66,948	986	18,746	6,794	1,041
Germany	212	1,251	167,592	16,857	3,954	6,834	11,776	8,636	10,376	3,255	39,203	28,890	3,922
Others	789,299	381,876	278,405	51,284	79,366	105,489	24,401	45,606	5,364	9,307	47,449	146,111	26,857
Total	16,908,333	15,498,900	24,043,441	20,362,342	6,725,096	8,882,707	12,466,323	15,748,964	10,190,421	7,101,989	7,695,814	12,650,423	3,014,314

Table 2.5: Monthly total imports by country of origin A\$CIF - 2005

Countries	January	February	March	April	May	June	July	August	September	October	November	December	Total
Australia	334,992	409,768	407,646	308,326	993,302	294,119	549,009	922,648	366,091	278,512	232,426	609,622	5,706,461
Fiji	202,832	273,212	132,842	186,563	449,513	357,818	231,476	487,765	201,485	174,144	163,516	471,526	3,332,692
Singapore	503,505	150	293,519	23,118	5,436	5,408	566,423	71,453	99,892	624,073	8,169	762,973	2,964,119
New Zealand	84,459	54,282	90,885	95,765	127,605	106,253	341,300	407,448	185,066	130,717	28,941	23,750	1,676,471
China	130,009	66,956	30,324	2,250	124,529	10,453	88,146	244,621	46,512	8,756	38,571	78,511	869,638
Japan	67,385	53,880	2,113	59,469	26,418	97,207	18,217	209,054	3,925	29,381	5,128	47,978	620,155
Denmark	-	-	509,041	-	-	-	-	-	-	-	-	-	509,041
Philippines	250	-	256	-	27,261	71,446	-	-	73,069	-	381	77,250	249,913
Indonesia	17,564	19,701	30,133	-	45,368	-	8,750	44,887	9,092	21,173	23,857	-	220,525
Thailand	4,936	-	1,433	-	79	12,843	1,577	59,643	-	-	10,881	81,987	173,379
Korea	37,566	1,820	-	-	38,334	-	-	-	-	64,887	-	13,673	156,280
Malaysia	32,933	2,681	21,526	21,788	5,810	-	237	5,674	-	899	17,534	74	109,156
Taiwan	63,821	18,296	-	-	-	-	119	8,924	1,048	-	-	-	92,208
Hong Kong	43	46,521	-	-	-	-	2,067	-	-	100	1,287	6,476	56,494
Finland	-	39,800	-	-	-	-	-	-	-	-	-	-	39,800
USA	-	3,239	6,191	2,904	18,808	-	29	2,989	35	100	281	-	34,576
India	8,997	-	16,620	-	-	-	-	-	-	-	-	-	25,617
United Kingdom	61	2,768	-	16,114	5,452	-	-	-	-	-	-	-	24,395
Canada	-	-	17,064	-	-	-	-	-	-	-	-	-	17,064
Vanuatu	-	-	-	-	4,477	-	5,018	7,231	-	-	-	-	16,726
Pakistan	-	-	-	-	-	-	-	-	10,468	-	-	-	10,468
Sri Lanka	-	-	-	-	1,489	-	-	-	-	-	-	-	1,489
Greece	498	160	-	-	-	-	-	-	-	-	-	-	658
Viet Nam	-	-	-	-	-	-	-	-	-	-	-	300	300
Germany	-	-	-	-	-	-	-	-	212	-	-	-	212
Italy	-	-	-	-	-	-	-	-	195	-	-	-	195
Belgium	-	-	-	-	171	-	-	-	-	-	-	-	171
Switzerland	-	-	-	-	100	30	-	-	-	-	-	-	130
Total	1,489,851	993,234	1,559,593	716,297	1,874,152	955,577	1,812,368	2,472,337	997,090	1,332,742	530,972	2,174,120	16,908,333

Table 2.6: Imports by country of origin and major groups, A\$CIF – 2005

	Food	Alcohol & Tobacco	Construction	Fuel	Clothing	Others	Total
Australia	2,904,546	454,392	320,763	638,037	51,573	1,337,150	5,706,461
Fiji	1,396,762	144,128	654,637	64,828	162,776	909,560	3,332,692
Singapore	60,201	-	43,267	2,771,115	29,823	59,713	2,964,119
New Zealand	428,765	85,054	311,780	71,559	19,652	759,661	1,676,471
China	73,189	3,429	57,778	70	274,799	460,373	869,638
Japan	130	-	12,424	723	15,407	591,471	620,155
Denmark	-	-	-	-	-	509,041	509,041
Philippines	220,537	938	1,351	-	5,298	21,789	249,913
Indonesia	6,177	-	3,847	-	84,064	126,437	220,525
Thailand	53,443	185	1,723	-	71,705	46,323	173,379
Korea	-	-	-	-	-	156,280	156,280
Malaysia	55,470	918	4,384	-	4,473	43,911	109,156
Taiwan	1,048	-	2,350	-	1,583	87,227	92,208
Hong Kong	37,698	-	1,560	-	8,194	9,042	56,494
Finland	-	-	-	-	-	39,800	39,800
USA	-	-	2,597	-	-	31,979	34,576
India	-	-	376	-	22,434	2,807	25,617
United Kingdom	-	-	1,966	-	-	22,429	24,395
Canada	-	-	-	-	-	17,064	17,064
Vanuatu	16,726	-	-	-	-	-	16,726
Pakistan	537	-	252	-	7,411	2,268	10,468
Sri Lanka	1,489	-	-	-	-	-	1,489
Greece	-	-	-	-	-	658	658
Viet Nam	-	-	-	-	-	300	300
Germany	-	-	-	-	-	212	212
Italy	-	-	-	-	-	195	195
Belgium	-	-	-	-	-	171	171
Switzerland	-	-	-	-	-	130	130
Grand Total	5,256,718	689,044	1,421,055	3,546,332	759,192	5,235,991	16,908,333

Table 2.7: Imports by country of export and major groups, A\$CIF – 2005

	Food	Alcohol & Tobacco	Construction	Fuel	Clothing	Others	Total
Fiji	1,562,420	146,668	799,825	3,538,422	468,320	1,689,166	8,204,822
Australia	2,936,214	491,216	270,838	-	40,415	1,233,819	4,972,502
New Zealand	460,392	47,014	259,319	7,700	119,383	979,745	1,873,553
Denmark	-	-	-	-	-	509,041	509,041
China	38,224	978	17,275	210	29,591	271,362	357,640
Singapore	347	185	42,124	-	75,106	61,815	179,577
Philippines	143,633	592	1,351	-	5,298	21,789	172,663
Japan	-	-	5,020	-	-	157,167	162,187
Korea	-	-	-	-	-	139,285	139,285
Hong Kong	44,618	2,391	21,343	-	21,079	46,205	135,636
Taiwan	1,048	-	1,994	-	-	69,924	72,966
Thailand	53,096	-	-	-	-	79	53,175
Indonesia	-	-	-	-	-	21,173	21,173
Canada	-	-	-	-	-	17,064	17,064
Vanuatu	16,726	-	-	-	-	-	16,726
USA	-	-	-	-	-	14,283	14,283
United Kingdom	-	-	1,966	-	-	3,486	5,452
Germany	-	-	-	-	-	212	212
Belgium	-	-	-	-	-	171	171
Samoa	-	-	-	-	-	145	145
Malaysia	-	-	-	-	-	60	60
Grand Total	5,256,718	689,044	1,421,055	3,546,332	759,192	5,235,991	16,908,333

Table 3.1 Resident arrivals by quarter and year by sex

Quarter	2001			2002			2003			2004			2005		
	M	F	T	M	F	T	M	F	T	M	F	T	M	F	T
First	297	164	461	342	171	513	373	271	644	393	256	649	251	130	381
Second	323	235	558	317	192	509	406	157	563	363	178	541	315	142	457
Third	293	153	446	357	217	574	530	242	772	358	169	527	366	167	533
Fourth	663	461	1124	691	526	1217	509	347	856	512	303	815	482	276	758
Total	1576	1013	2589	1707	1106	2813	1818	1017	2835	1626	906	2532	1414	715	2129

Table 3.2 Resident arrivals by quarter/year, age group and resident status by sex

Quarter/ Year	Total			Age Group												Resident Status											
				0-14			15-24			25-34			35-44			45-54			55+			Returning			Intending		
	M	F	T	M	F	T	M	F	T	M	F	T	M	F	T	M	F	T	M	F	T	M	F	T			
Q1/03	373	271	644	72	77	149	47	32	79	97	49	146	86	53	139	39	31	70	32	29	61	362	262	624	11	9	20
Q2/03	406	157	563	42	32	74	74	18	92	120	37	157	96	35	131	58	23	81	16	12	28	379	147	526	27	10	37
Q3/03	530	242	772	51	39	90	87	46	133	153	47	200	122	54	176	79	35	114	38	21	59	497	221	718	33	21	54
Q4/03	509	347	856	77	77	154	129	129	258	108	44	152	117	52	169	61	27	88	17	18	35	487	332	819	22	15	37
Q1/04	393	256	649	62	67	129	76	50	126	94	51	145	70	38	108	64	25	89	27	25	52	349	237	586	44	19	63
Q2/04	363	178	541	29	37	66	47	22	69	73	38	111	111	40	151	74	29	103	29	12	41	343	167	510	20	11	31
Q3/04	358	169	527	36	31	67	46	24	70	102	44	146	91	38	129	59	23	82	24	9	33	335	159	494	23	10	33
Q4/04	512	303	815	78	67	145	115	101	216	133	50	183	114	47	161	43	21	64	29	17	46	496	292	788	16	11	27
Q1/05	251	130	381	46	32	78	28	16	44	67	30	97	57	28	85	40	14	54	13	10	23	232	117	349	19	13	32
Q2/05	315	142	457	23	24	47	31	20	51	95	33	128	88	35	123	53	20	73	25	10	35	306	136	442	9	6	15
Q3/05	366	167	533	42	24	66	47	22	69	88	44	132	95	44	139	73	23	96	21	10	31	350	162	512	16	5	21
Q4/05	482	276	758	83	62	145	111	88	199	124	50	174	96	38	134	41	24	65	27	14	41	482	275	757	0	1	1

Table 3.3 Resident arrivals by month, age groups and resident status by sex - 2005

Months	Total			Age Group												Resident Status											
				0-14			15-24			25-34			35-44			45-54			55+			Returning			Intending		
	M	F	T	M	F	T	M	F	T	M	F	T	M	F	T	M	F	T	M	F	T	M	F	T			
Jan	93	54	147	16	18	34	11	3	14	25	12	37	22	12	34	14	5	19	5	4	9	86	47	133	7	7	14
Feb	111	61	172	27	13	40	12	9	21	28	14	42	22	13	35	15	7	22	7	5	12	102	56	158	9	5	14
Mar	47	15	62	3	1	4	5	4	9	14	4	18	13	3	16	11	2	13	1	1	2	44	14	58	3	1	4
Apr	77	34	111	6	6	12	6	5	11	23	6	29	23	7	30	13	8	21	6	2	8	74	32	106	3	2	5
May	122	42	164	8	4	12	14	3	17	36	17	53	38	11	49	16	5	21	10	2	12	119	38	157	3	4	7
Jun	116	66	182	9	14	23	11	12	23	36	10	46	27	17	44	24	7	31	9	6	15	113	66	179	3	0	3
Jul	141	59	200	20	12	32	17	8	25	35	18	53	30	13	43	31	5	36	8	3	11	133	57	190	8	2	10
Aug	92	47	139	10	6	16	15	8	23	20	15	35	28	12	40	16	4	20	3	2	5	88	45	133	4	2	6
Sep	133	61	194	12	6	18	15	6	21	33	11	44	37	19	56	26	14	40	10	5	15	129	60	189	4	1	5
Oct	107	29	136	7	1	8	8	5	13	33	11	44	34	8	42	18	3	21	7	1	8	107	29	136	0	0	0
Nov	117	66	183	18	10	28	23	19	42	30	14	44	23	11	34	11	7	18	12	5	17	117	66	183	0	0	0
Dec	258	181	439	58	51	109	80	64	144	61	25	86	39	19	58	12	14	26	8	8	16	258	180	438	0	1	1
Total	1414	715	2129	194	142	336	217	146	363	374	157	531	336	145	481	207	81	288	86	44	130	1370	690	2060	44	25	69

Table 3.4 Resident arrivals by month and mode of travel – 2005

Months	Fiji Air	Other Aircraft	Mv Manufolau	Mv Nivaga II	Other Vessels	Air			Sea			Total		
						M	F	T	M	F	T	M	F	T
Jan	147	0	0	0	0	93	54	147	0	0	0	93	54	147
Feb	80	0	0	92	0	55	25	80	56	36	92	111	61	172
Mar	62	0	0	0	0	47	15	62	0	0	0	47	15	62
Apr	111	0	0	0	0	77	34	111	0	0	0	77	34	111
May	131	2	31	0	0	98	35	133	24	7	31	122	42	164
Jun	141	6	35	0	0	94	53	147	22	13	35	116	66	182
Jul	146	0	0	41	13	104	42	146	37	17	54	141	59	200
Aug	139	0	0	0	0	92	47	139	0	0	0	92	47	139
Sep	143	0	50	0	1	104	39	143	29	22	51	133	61	194
Oct	129	7	0	0	0	107	29	136	0	0	0	107	29	136
Nov	146	0	0	37	0	89	57	146	28	9	37	117	66	183
Dec	146	10	122	161	0	94	62	156	164	119	283	258	181	439
Total	1521	25	238	331	14	1054	492	1546	360	223	583	1414	715	2129

Table 3.5 Resident arrival by quarters / years and mode of travel

Quarters	Fiji Air	Other Aircraft	Mv Manufolau	Mv Nivaga II	Other Vessels	Air			Sea			Total		
						M	F	T	M	F	T	M	F	T
Q1/04	435	0	74	108	15	283	169	452	110	87	197	393	256	649
Q2/04	406	38	17	70	10	300	144	444	63	34	97	363	178	541
Q3/04	409	0	35	59	24	284	125	409	74	44	118	358	169	527
Q4/04	524	0	0	7	284	339	185	524	173	118	291	512	303	815
Total	1774	38	126	244	333	1206	623	1829	420	283	703	1626	906	2532
Q1/05	289	0	0	92	0	195	94	289	56	36	92	251	130	381
Q2/05	383	8	66	0	0	269	122	391	46	20	66	315	142	457
Q3/05	428	0	50	41	14	300	128	428	66	39	105	366	167	533
Q4/05	421	17	122	198	0	290	148	438	192	128	320	482	276	758
Total	1521	25	238	331	14	1054	492	1546	360	223	583	1414	715	2129

Table 3.6 Resident departures by quarter and years

Quarter	1998	1999	2000	2001	2002	2003	2004	2005
First	610	787	984	949	980	999	796	783
Second	435	337	489	701	513	558	460	496
Third	413	447	772	389	671	481	529	273
Fourth	441	664	681	738	536	579	551	601
Total	1899	2235	2926	2777	2700	2617	2336	2153

Table 3.7 Resident departures by quarters/years, purpose of travel and mode of travel

Quarter/ Year	Purpose of Travel						Mode of Travel		Total
	Tourism	Family / Social	Commerce	Government	Education	Other	Air	Sea	
Q1/03	5	245	4	106	405	164	758	241	999
Q2/03	4	182	5	197	20	134	376	182	558
Q3/03	2	233	11	106	43	142	451	30	481
Q4/03	2	262	3	111	19	166	462	117	579
Q1/04	0	315	20	111	337	130	633	163	796
Q2/04	0	198	17	153	24	137	427	33	460
Q3/04	0	177	9	176	50	172	410	119	529
Q4/04	0	278	10	109	26	202	410	141	551
Q1/05	1	212	14	119	294	143	524	259	783
Q2/05	0	151	19	117	27	182	408	88	496
Q3/05	0	49	13	87	42	82	268	5	273
Q4/05	14	261	15	117	11	183	424	177	601

Table 3.8 Resident departures by month and purpose of travel – 2005

Months	Purpose of Travel						Total
	Tourism	Family / Social	Commerce	Government	Education	Other	
Jan	0	121	5	38	155	45	364
Feb	1	66	7	47	122	48	291
Mar	0	25	2	34	17	50	128
Apr	0	13	5	47	8	52	125
May	0	81	6	45	13	60	205
Jun	0	57	8	25	6	70	166
Jul	0	18	5	43	17	49	132
Aug	0	27	8	42	25	31	133
Sep	0	4	0	2	0	2	8
Oct	1	25	6	46	0	78	156
Nov	1	151	5	55	9	70	291
Dec	12	85	4	16	2	35	154
Total	15	673	61	440	374	590	2153

Table 3.9 Resident departures by month and mode of travel – 2005

Months	Fiji Air	Other Aircraft	Mv Manufoiau	Mv Nivaga II	Other Vessels	Total Air	Total Sea	Total Departure
Jan	221	0	0	136	7	221	143	364
Feb	176	8	107	0	0	184	107	291
Mar	119	0	0	0	9	119	9	128
Apr	125	0	0	0	0	125	0	125
May	149	4	52	0	0	153	52	205
Jun	130	0	36	0	0	130	36	166
Jul	132	0	0	0	0	132	0	132
Aug	133	0	0	0	0	133	0	133
Sep	3	0	0	5	0	3	5	8
Oct	5	151	0	0	0	156	0	156
Nov	0	172	119	0	0	172	119	291
Dec	0	96	0	58	0	96	58	154
Total	1193	431	314	199	16	1624	529	2153

Table 3.10 Visitor arrivals by month and years by sex

Months	2001			2002			2003			2004			2005		
	M	F	T	M	F	T	M	F	T	M	F	T	M	F	T
Jan	58	19	77	85	26	111	61	20	81	86	18	104	67	24	91
Feb	55	14	69	75	20	95	108	32	140	117	29	146	62	22	84
Mar	144	50	194	65	28	93	96	30	126	93	19	112	12	10	22
Apr	47	12	59	56	17	73	115	23	138	115	35	150	67	24	91
May	65	12	77	90	23	113	72	16	88	106	43	149	70	33	103
Jun	55	29	84	80	25	105	70	18	88	57	18	75	117	28	145
Jul	83	20	103	79	27	106	64	17	81	70	19	89	72	40	112
Aug	71	13	84	98	31	129	95	37	132	70	28	98	44	13	57
Sep	43	18	61	60	22	82	116	42	158	54	15	69	86	32	118
Oct	41	12	53	110	30	140	92	41	133	71	17	88	74	36	110
Nov	104	31	135	59	41	100	72	10	82	76	25	101	50	24	74
Dec	86	58	144	100	71	171	82	48	130	55	54	109	39	39	78
Total	852	288	1140	957	361	1318	1043	334	1377	970	320	1290	760	325	1085

Table 3.11 Visitor arrivals by quarter/year and purpose of visit by sex

Quarter/ Year	Holiday/ Vocation			Business/ Official			Friends/ Relatives			Transit/ Stopover			Other Purpose			Total		
	M	F	T	M	F	T	M	F	T	M	F	T	M	F	T	M	F	T
Q1/04	27	5	32	215	33	248	15	19	34	12	6	18	27	3	30	296	66	362
Q2/04	23	16	39	135	31	166	35	45	80	8	3	11	1	1	2	202	96	298
Q3/04	25	16	41	216	58	274	25	18	43	7	3	10	5	1	6	278	96	374
Q4/04	36	16	52	134	32	166	11	7	18	9	6	15	4	1	5	194	62	256
Q1/05	24	9	33	94	30	124	11	13	24	2	1	3	10	3	13	141	56	197
Q2/05	24	18	42	176	46	222	13	9	22	9	5	14	32	7	39	254	85	339
Q3/05	42	22	64	100	26	126	43	27	70	8	6	14	9	4	13	202	85	287
Q4/05	17	22	39	73	21	94	41	42	83	26	12	38	6	2	8	163	99	262

Table 3.12 Visitor arrivals by month and purpose of visit by sex – 2005

Months	Holiday/ Vocation			Business/ Official			Friends/ Relatives			Transit/ Stopover			Other Purpose			Total		
	M	F	T	M	F	T	M	F	T	M	F	T	M	F	T	M	F	T
Jan	13	2	15	40	12	52	8	8	16	0	0	0	6	2	8	67	24	91
Feb	9	4	13	45	14	59	3	3	6	2	1	3	3	0	3	62	22	84
Mar	2	3	5	9	4	13	0	2	2	0	0	0	1	1	2	12	10	22
Apr	7	6	13	49	11	60	2	1	3	1	2	3	8	4	12	67	24	91
May	10	10	20	30	16	46	8	5	13	5	0	5	17	2	19	70	33	103
Jun	7	2	9	97	19	116	3	3	6	3	3	6	7	1	8	117	28	145
Jul	21	12	33	31	13	44	18	10	28	0	1	1	2	4	6	72	40	112
Aug	5	1	6	31	8	39	4	2	6	1	2	3	3	0	3	44	13	57
Sep	16	9	25	38	5	43	21	15	36	7	3	10	4	0	4	86	32	118
Oct	10	15	25	39	10	49	6	4	10	17	6	23	2	1	3	74	36	110
Nov	2	6	8	32	8	40	6	4	10	7	5	12	3	1	4	50	24	74
Dec	5	1	6	2	3	5	29	34	63	2	1	3	1	0	1	39	39	78
Total	107	71	178	443	123	566	108	91	199	45	24	69	57	16	73	760	325	1085

Table 3.13 Visitor arrivals by country and purpose of visit by sex – 2005

Country	Holiday/Vocation			Business/Official			Friends/Relatives			Transit/Stopover			Other Purpose			Total		
	M	F	T	M	F	T	M	F	T	M	F	T	M	F	T	M	F	T
Australia	6	7	13	99	30	129	8	12	20	4	2	6	13	5	18	130	56	186
New Zealand	13	11	24	47	16	63	17	9	26	1	1	2	2	0	2	80	37	117
Fiji	7	1	8	93	33	126	28	26	54	13	6	19	14	2	16	155	68	223
Kiribati	0	0	0	3	0	3	17	11	28	2	0	2	0	0	0	22	11	33
Other Pacific	1	2	3	52	7	59	9	4	13	0	1	1	2	0	2	64	14	78
USA	14	8	22	14	1	15	8	6	14	10	9	19	11	2	13	57	26	83
Canada	3	2	5	6	3	9	0	0	0	1	0	1	1	2	3	11	7	18
Great Britain	2	5	7	19	5	24	0	2	2	2	2	4	0	0	0	23	14	37
Germany	3	3	6	6	1	7	0	0	0	0	1	1	0	0	0	9	5	14
France	0	1	1	6	5	11	0	0	0	0	0	0	0	0	0	6	6	12
Other Europe	10	4	14	11	1	12	0	0	0	9	2	11	2	2	4	32	9	41
Japan	44	25	69	35	8	43	1	2	3	0	0	0	2	1	3	82	36	118
Other Asia	2	1	3	38	11	49	6	3	9	2	0	2	10	0	10	58	15	73
Other Countries	2	1	3	14	2	16	14	16	30	1	0	1	0	2	2	31	21	52
Total	107	71	178	443	123	566	108	91	199	45	24	69	57	16	73	760	325	1085

Table 3.14 Visitor arrivals by month and mode of travel by sex – 2005

Months	Fiji Air	Other Aircraft	Mv Manufofou	Mv Nivaga II	Other Vessels	Air			Sea		
						M	F	T	M	F	T
Jan	83	8	0	0	0	67	24	91	0	0	0
Feb	80	0	0	4	0	60	20	80	2	2	4
Mar	22	0	0	0	0	12	10	22	0	0	0
Apr	83	0	0	0	8	64	19	83	3	5	8
May	82	7	10	0	4	60	29	89	10	4	14
Jun	138	0	2	0	5	113	25	138	4	3	7
Jul	94	0	0	15	3	62	32	94	10	8	18
Aug	57	0	0	0	0	44	13	57	0	0	0
Sep	69	0	16	0	33	56	13	69	30	19	49
Oct	78	8	0	0	24	60	26	86	14	10	24
Nov	55	3	0	1	15	42	16	58	8	8	16
Dec	25	3	32	15	3	10	18	28	29	21	50
Total	866	29	60	35	95	650	245	895	110	80	190

Table 3.15 Visitor departures by quarter and years

Quarter	2001	2002	2003	2004	2005
First	357	307	542	420	343
Second	222	263	362	430	350
Third	191	322	275	314	175
Fourth	290	273	372	296	274
Total	1060	1165	1551	1460	1142

Table 3.16 Visitor departures by month and countries – 2005

Months	Australia	New Zealand	Fiji	Other Pacific	USA	Canada	UK	Germany	France	Other Europe	Japan	Other Asia	Other Countries	Total
Jan	15	19	37	4	8	3	4	2	0	0	5	2	16	115
Feb	20	14	17	6	8	5	8	1	5	2	17	10	1	114
Mar	20	8	19	5	11	1	9	4	3	0	22	8	4	114
Apr	9	13	20	5	4	1	6	5	0	3	6	3	4	79
May	13	10	31	3	4	1	8	2	0	3	12	22	3	112
Jun	30	23	33	33	5	1	6	3	1	3	4	10	7	159
Jul	22	16	16	6	10	0	2	3	0	0	15	4	3	97
Aug	13	5	19	4	0	1	1	0	2	0	10	6	5	66
Sep	1	1	5	0	0	0	0	0	0	0	2	3	0	12
Oct	15	11	20	3	20	7	5	0	1	2	12	6	6	108
Nov	14	12	18	7	3	0	4	0	0	7	13	3	15	96
Dec	21	4	11	2	3	1	1	2	0	7	6	8	4	70
Total	193	136	246	78	76	21	54	22	12	27	124	85	68	1142

Table 3.17 Visitor departures by month and mode of transport – 2005

Months	Fiji Air	Other Aircraft	Mv Manufo lau	Mv Nivaga II	Other Vessels	Total Air	Total Sea	Total departures
Jan	71	0	10	22	12	71	44	115
Feb	105	9	0	0	0	114	0	114
Mar	100	0	0	0	14	100	14	114
Apr	79	0	0	0	0	79	0	79
May	82	7	11	0	12	89	23	112
Jun	153	0	6	0	0	153	6	159
Jul	93	0	0	0	4	93	4	97
Aug	63	0	0	0	3	63	3	66
Sep	6	1	0	5	0	7	5	12
Oct	1	81	0	0	26	82	26	108
Nov	0	80	10	0	6	80	16	96
Dec	0	55	0	3	12	55	15	70
Total	753	233	37	30	89	986	156	1142

Table 3.18 Visitor average duration of stay in days by year and countries

Year	Australia	New Zealand	Fiji	Other Pacific	USA	Canada	UK	Germany	France	Other Europe	Japan	Other Asia	Other Countries
2002	25	42	62	98	27	40	51	9	2	11	19	38	19
2003	25	24	75	182	26	16	25	4	12	4	22	42	24
2004	36	66	65	86	48	26	15	8	18	20	14	40	87
2005	28	40	71	66	35	16	35	21	22	12	11	60	111

Table 4.1 Births by quarter/years and islands

Quarter/ Year	Funafuti	Nanumea	Nanumaga	Niutao	Nui	Vaitupu	Nukufetau	Nukulaelae	Niulakita	Total
Q1/00	26	4	3	5	3	1	7	0	0	49
Q2/00	52	5	5	6	0	3	3	1	0	75
Q3/00	50	1	3	1	0	3	3	0	0	61
Q4/00	34	1	4	3	0	3	1	0	0	46
Q1/01	39	2	5	3	0	5	2	2	0	58
Q2/01	36	3	5	2	0	1	3	1	0	51
Q3/01	39	4	4	2	0	1	0	0	0	50
Q4/01	28	1	1	5	0	0	3	0	0	38
Q1/02	26	1	1	2	2	4	2	0	0	38
Q2/02	37	2	2	0	0	2	2	0	0	45
Q3/02	32	2	1	2	1	0	3	1	0	42
Q4/02	23	1	2	0	0	1	3	1	0	31
Q1/03	37	1	0	1	0	3	1	2	0	45
Q2/03	44	2	4	0	1	2	0	0	0	53
Q3/03	29	2	1	2	2	2	2	2	0	42
Q4/03	33	1	2	2	1	5	1	0	0	45
Q1/04	26	4	6	1	0	3	2	2	0	44
Q2/04	41	2	1	4	1	3	0	0	0	52
Q3/04	29	1	4	1	3	6	3	0	0	47
Q4/04	38	2	1	0	0	6	0	0	0	47
Q1/05	44	3	6	2	8	6	1	0	0	70
Q2/05	35	2	5	2	2	6	1	0	0	53
Q3/05	47	2	0	2	2	0	0	0	0	53
Q4/05	11	0	2	0	0	0	2	0	0	15

Table 4.2 Monthly births by islands and sex - 2005

Months	Funafuti		Nanumea		Nanumaga		Niutao		Nui		Vaitupu		Nukufetau		Nukulaelae		Niulakita		Total		
	M	F	M	F	M	F	M	F	M	F	M	F	M	F	M	F	M	F	M	F	T
Jan	11	9	1	0	0	3	1	1	3	3	1	0	0	0	0	0	0	0	17	16	33
Feb	7	2	1	0	1	0	0	0	0	1	0	2	0	0	0	0	0	0	9	5	14
Mar	7	8	1	0	2	0	0	0	1	0	1	2	1	0	0	0	0	0	13	10	23
Apr	10	5	0	0	0	0	1	0	0	0	2	1	0	0	0	0	0	0	13	6	19
May	6	4	1	1	1	1	0	0	0	0	0	0	0	0	0	0	0	0	8	6	14
Jun	6	4	0	0	2	1	0	1	1	1	1	2	0	1	0	0	0	0	10	10	20
Jul	9	8	2	0	0	0	1	1	0	0	0	0	0	0	0	0	0	0	12	9	21
Aug	9	8	0	0	0	0	0	0	0	1	0	0	0	0	0	0	0	0	9	9	18
Sep	6	7	0	0	0	0	0	0	1	0	0	0	0	0	0	0	0	0	7	7	14
Oct	9	1	0	0	0	0	0	0	0	0	0	0	0	1	0	0	0	0	9	2	11
Nov	0	1	0	0	1	0	0	0	0	0	0	0	0	0	0	0	0	0	1	1	2
Dec	0	0	0	0	0	1	0	0	0	0	0	0	1	0	0	0	0	0	1	1	2
Total	80	57	6	1	7	6	3	3	6	6	5	7	2	2	0	0	0	0	109	82	191

Table 4.3 Mothers age groups by islands and marital status – 2005

Age-group	Funafuti		Nanumea		Nanumaga		Niutao		Nui		Vaitupu		Nukufetau		Nukulaelae		Niulakita		Total		
	M	S	M	S	M	S	M	S	M	S	M	S	M	S	M	S	M	S	M	S	T
15-19	6	5	1	0	0	0	0	0	0	0	0	0	0	0	0	0	0	0	7	5	12
20-24	39	5	0	1	1	0	1	0	4	0	2	0	0	0	0	0	0	0	47	6	53
25-29	29	2	1	0	7	0	1	0	2	1	5	0	0	0	0	0	0	0	45	3	48
30-34	19	0	1	0	3	0	1	0	3	0	5	0	2	0	0	0	0	0	34	0	34
35-39	23	0	3	0	1	0	2	0	1	0	0	0	2	0	0	0	0	0	32	0	32
40-44	8	0	0	0	1	0	1	0	1	0	0	0	0	0	0	0	0	0	11	0	11
45-49	1	0	0	0	0	0	0	0	0	0	0	0	0	0	0	0	0	0	1	0	1
Total	125	12	6	1	13	0	6	0	11	1	12	0	4	0	0	0	0	177	14	191	

Table 4.4 Deaths by quarters / years and island of occurrence

Quarter/ Year	Funafuti	Nanumea	Nanumaga	Niutao	Nui	Vaitupu	Nukufetau	Nukulaelae	Niulakita	Total
Q1/00	7	3	2	0	2	21	4	3	0	42
Q2/00	7	3	2	0	4	1	0	3	0	20
Q3/00	8	5	2	3	0	4	0	0	0	22
Q4/00	11	0	1	5	2	4	2	0	1	26
Q1/01	5	2	5	4	2	2	2	3	0	25
Q2/01	13	3	2	3	2	3	0	2	0	28
Q3/01	3	5	0	4	0	0	1	1	0	14
Q4/01	10	1	4	1	2	1	0	0	0	19
Q1/02	7	6	4	4	0	3	1	0	0	25
Q2/02	11	1	2	3	0	5	6	0	0	28
Q3/02	7	1	2	1	3	3	4	0	0	21
Q4/02	7	1	1	1	1	1	0	1	0	13
Q1/03	6	3	2	1	4	0	3	1	0	20
Q2/03	7	4	1	1	0	1	1	0	0	15
Q3/03	10	1	0	4	0	4	0	0	0	19
Q4/03	11	1	5	4	3	1	2	2	0	29
Q1/04	10	4	1	1	2	1	0	2	0	21
Q2/04	17	3	0	2	1	4	3	0	0	30
Q3/04	12	1	1	0	2	3	1	0	0	20
Q4/04	6	3	4	1	0	4	0	0	0	18
Q1/05	8	3	2	5	0	0	2	2	0	22
Q2/05	9	1	0	3	2	6	0	0	0	21
Q3/05	5	1	1	1	0	3	2	0	0	13
Q4/05	1	0	2	0	0	0	0	0	0	3

Table 4.5 Monthly deaths by island of occurrence and sex – 2005

Months	Funafuti		Nanumea		Nanumaga		Niutao		Nui		Vaitupu		Nukufetau		Nukulaelae		Niulakita		Total			
	M	F	M	F	M	F	M	F	M	F	M	F	M	F	M	F	M	F	M	F	T	
Jan	3	1	1	1	0	0	1	1	0	0	0	0	2	0	0	1	0	0	0	7	4	11
Feb	0	1	0	0	0	0	0	1	0	0	0	0	0	0	1	0	0	0	1	2	3	
Mar	2	1	1	0	2	0	2	0	0	0	0	0	0	0	0	0	0	0	7	1	8	
Apr	1	1	0	0	0	0	0	0	0	1	1	1	0	0	0	0	0	0	2	3	5	
May	2	0	0	0	0	0	1	2	0	1	0	3	0	0	0	0	0	0	3	6	9	
Jun	4	1	0	1	0	0	0	0	0	0	1	0	0	0	0	0	0	0	5	2	7	
Jul	3	1	1	0	0	0	0	1	0	0	0	0	2	0	0	0	0	0	6	2	8	
Aug	0	1	0	0	0	1	0	0	0	0	0	1	0	0	0	0	0	0	0	3	3	
Sep	0	0	0	0	0	0	0	0	0	0	1	1	0	0	0	0	0	0	1	1	2	
Oct	0	1	0	0	0	1	0	0	0	0	0	0	0	0	0	0	0	0	0	2	2	
Nov	0	0	0	0	0	0	0	0	0	0	0	0	0	0	0	0	0	0	0	0	0	
Dec	0	0	0	0	1	0	0	0	0	0	0	0	0	0	0	0	0	0	1	0	1	
Total	15	8	3	2	3	2	4	5	0	2	3	6	4	0	1	1	0	0	33	26	59	

Table 4.6 Monthly deaths by home island and sex – 2005

Months	Funafuti		Nanumea		Nanumaga		Niutao		Nui		Vaitupu		Nukufetau		Nukulaelae		Niulakita		Total			
	M	F	M	F	M	F	M	F	M	F	M	F	M	F	M	F	M	F	M	F	T	
Jan	0	0	1	1	0	0	1	2	1	0	1	1	3	0	0	0	0	0	0	7	4	11
Feb	0	1	1	0	0	0	0	1	0	0	0	0	0	0	0	0	0	0	0	1	2	3
Mar	1	0	1	0	1	0	3	1	0	0	1	0	0	0	0	0	0	0	0	7	1	8
Apr	1	0	0	0	0	1	0	0	0	1	1	1	0	0	0	0	0	0	0	2	3	5
May	1	0	0	0	0	1	2	2	0	1	0	2	0	0	0	0	0	0	0	3	6	9
Jun	2	0	0	2	1	0	0	0	1	0	1	0	0	0	0	0	0	0	0	5	2	7
Jul	0	0	1	0	0	0	0	1	0	0	0	1	5	0	0	0	0	0	0	6	2	8
Aug	0	0	0	0	0	1	0	0	0	1	0	1	0	0	0	0	0	0	0	0	3	3
Sep	0	0	0	0	0	0	0	0	0	0	1	1	0	0	0	0	0	0	0	1	1	2
Oct	0	0	0	1	0	1	0	0	0	0	0	0	0	0	0	0	0	0	0	0	2	2
Nov	0	0	0	0	0	0	0	0	0	0	0	0	0	0	0	0	0	0	0	0	0	0
Dec	0	0	0	0	1	0	0	0	0	0	0	0	0	0	0	0	0	0	0	1	0	1
Total	5	1	4	4	3	4	6	7	2	3	5	7	8	0	0	0	0	0	33	26	59	

Table 4.7 Deaths by age groups and island of occurrence by sex – 2005

Age Group	Funafuti		Nanumea		Nanumaga		Niutao		Nui		Vaitupu		Nukufetau		Nukulaelae		Niulakita		Total			
	M	F	M	F	M	F	M	F	M	F	M	F	M	F	M	F	M	F	M	F	T	
< 1yr	3	1	2	0	0	0	0	0	0	0	0	0	0	0	0	0	0	0	0	5	1	6
1-4	0	1	0	0	0	0	1	0	0	0	0	0	0	0	0	0	0	0	0	1	1	2
5-9	0	0	0	0	0	0	0	0	0	0	0	0	0	0	0	0	0	0	0	0	0	0
10-14	0	0	0	0	0	0	0	0	0	0	0	0	0	0	0	0	0	0	0	0	0	0
15-19	0	0	0	0	0	0	0	0	0	0	0	0	0	0	0	0	0	0	0	0	0	0
20-24	1	0	0	0	0	0	0	0	0	0	0	0	0	0	0	0	0	0	0	1	0	1
25-29	0	0	0	0	0	0	0	0	0	0	0	0	0	0	0	0	0	0	0	0	0	0
30-34	1	0	0	0	0	0	0	0	0	0	0	0	0	0	0	0	0	0	0	1	0	1
35-39	1	0	0	0	0	0	1	0	0	0	0	0	0	0	0	0	0	0	0	2	0	2
40-44	1	0	0	0	0	0	1	0	0	0	0	0	0	0	0	0	0	0	0	2	0	2
45-49	2	0	0	0	0	0	0	0	0	0	1	0	0	0	0	0	0	0	0	3	0	3
50-54	2	1	0	0	1	0	0	2	0	0	0	0	0	0	0	0	0	0	0	3	3	6
55-59	1	0	1	0	0	0	0	0	0	0	1	1	0	0	0	0	0	0	0	3	1	4
60-64	0	3	0	0	0	0	0	1	0	1	0	0	2	0	0	0	0	0	0	2	5	7
65-69	1	1	0	0	0	0	0	0	0	0	0	2	1	0	0	1	0	0	0	2	4	6
70-74	0	0	0	0	0	0	0	0	0	1	0	0	0	0	0	0	0	0	0	0	1	1
75-79	1	1	0	0	1	1	0	1	0	0	1	1	0	0	1	0	0	0	0	4	4	8
80-84	1	0	0	2	1	0	1	1	0	0	0	2	0	0	0	0	0	0	0	3	5	8
85-89	0	0	0	0	0	1	0	0	0	0	0	0	1	0	0	0	0	0	0	1	1	2
Total	15	8	3	2	3	2	4	5	0	2	3	6	4	0	1	1	0	0	33	26	59	

Table 4.8 Deaths by age groups and Home Island by sex – 2005

Age Group	Funafuti		Nanumea		Nanumaga		Niutao		Nui		Vaitupu		Nukufetau		Nukulaelae		Niulakita		Total				
	M	F	M	F	M	F	M	F	M	F	M	F	M	F	M	F	M	F	M	F	T		
< 1yr	0	0	1	0	0	1	1	0	1	0	0	0	2	0	0	0	0	0	0	0	5	1	6
1-4	0	0	0	1	0	0	1	0	0	0	0	0	0	0	0	0	0	0	0	1	1	2	
5-9	0	0	0	0	0	0	0	0	0	0	0	0	0	0	0	0	0	0	0	0	0	0	
10-14	0	0	0	0	0	0	0	0	0	0	0	0	0	0	0	0	0	0	0	0	0	0	
15-19	0	0	0	0	0	0	0	0	0	0	0	0	0	0	0	0	0	0	0	0	0	0	
20-24	1	0	0	0	0	0	0	0	0	0	0	0	0	0	0	0	0	0	1	0	1		
25-29	0	0	0	0	0	0	0	0	0	0	0	0	0	0	0	0	0	0	0	0	0	0	
30-34	1	0	0	0	0	0	0	0	0	0	0	0	0	0	0	0	0	0	1	0	1		
35-39	0	0	1	0	0	0	1	0	0	0	0	0	0	0	0	0	0	0	2	0	2		
40-44	0	0	0	0	1	0	1	0	0	0	0	0	0	0	0	0	0	0	2	0	2		
45-49	1	0	0	0	0	0	0	0	0	0	2	0	0	0	0	0	0	0	3	0	3		
50-54	1	0	0	0	0	0	1	3	1	0	0	0	0	0	0	0	0	0	3	3	6		
55-59	0	0	1	0	0	0	0	0	0	0	2	1	0	0	0	0	0	0	3	1	4		
60-64	0	0	0	1	0	0	0	2	0	2	0	0	2	0	0	0	0	0	2	5	7		
65-69	0	1	0	0	0	1	0	0	0	0	0	2	2	0	0	0	0	0	2	4	6		
70-74	0	0	0	0	0	0	0	0	0	1	0	0	0	0	0	0	0	0	0	1	1		
75-79	0	0	1	0	1	1	0	1	0	0	1	2	1	0	0	0	0	0	4	4	8		
80-84	1	0	0	2	1	0	1	1	0	0	0	2	0	0	0	0	0	0	3	5	8		
85-89	0	0	0	0	0	1	0	0	0	0	0	0	1	0	0	0	0	0	1	1	2		
Total	5	1	4	4	3	4	6	7	2	3	5	7	8	0	0	0	0	33	26	59			

Table 5.1 Total population by quarter and years

Quarter	2002	2003	2004	2005
First	NA	9370	9859	9668
Second	NA	9365	9906	9650
Third	NA	9775	9873	10062
Fourth	9895	10041	10168	10219
Growth rate	0.5%	1.5%	2.9%	0.5%

Table 5.2 Total migration by years

	2002	2003	2004	2005
Migration in	4131	4212	3822	3214
Migration out	3865	4168	3796	3295
Net migration	266	44	26	-81
Net migration rate	2.7%	0.4%	0.3%	-0.8%

Table 5.3 Resident births and deaths by years

	1999	2000	2001	2002	2003	2004	2005
Births	231	231	197	156	185	190	191
Deaths	84	109	86	87	83	89	59
Natural Increase	147	122	111	69	102	101	132
Rate of natural increase	1.5%	1.3%	1.1%	0.7%	1.0%	2.1%	1.3%

Table 6.1 Pre-school enrolments by year and sex - 2005.

Islands	No. of schools	Year 2		Year 3		Year 4		Year 5		Total			Qualified Teachers	Unqualified Teachers	Total number of teachers
		M	F	M	F	M	F	M	F	M	F	T			
Funafuti	8	2	7	39	36	36	42	46	45	123	130	253	8	16	24
Vaitupu	2	0	0	13	10	18	12	24	12	55	34	89	2	7	9
Nanumaga	1	0	0	9	7	15	12	10	7	34	26	60	1	4	5
Nanumea	2	2	2	9	10	9	9	9	8	29	29	58	2	4	6
Niutao	1	0	0	3	5	8	11	13	15	24	31	55	1	2	3
Nui	1	0	0	6	8	8	9	7	10	21	27	48	2	1	3
Nukufetau	1	0	0	4	7	7	9	13	4	24	20	44	1	2	3
Nukulaelae	1	0	0	2	7	6	5	9	3	17	15	32	0	3	3
Niulakita	1	2	2	1	0	1	1	0	1	4	4	8	0	1	1
Total	18	6	11	86	90	108	110	131	105	331	316	647	17	40	57

Table 6.2 Primary school enrolments by year and sex.

Year	Male	Female	Total	Teachers	Pupils / Teachers Ratio
1991	781	702	1483	66	22.5
1992	731	685	1416	62	22.8
1993	854	794	1648	73	22.6
1994	879	767	1646	72	22.9
1995	940	769	1709	60	28.5
1996	938	747	1685	59	28.6
1997	957	786	1743	78	22.3
1998	975	846	1821	90	20.2
1999	955	784	1739	92	18.9
2000	1055	885	1940	98	19.8
2001	945	853	1798	98	18.3
2002	846	795	1641	99	16.6
2003	945	914	1859	99	18.8
2004	1035	975	2010	84	23.9
2005	1049	961	2010	103	19.5

Table 6.3 Motufoua Entrance Examination results - 2005

School	Gender	Fail	Pass	Total	% Pass Rate by Gender	% School Pass Rate
Faikimua	Female	1	4	5	80	70%
	Male	2	3	5	60	
Kaumaile	Female	13	4	17	24	18%
	Male	14	2	16	13	
Lotohoni	Female	2	4	6	67	41%
	Male	8	3	11	27	
Nauti	Female	30	32	62	52	40%
	Male	42	16	58	28	
SDA	Female	1	2	3	67	30%
	Male	6	1	7	14	
Tolise	Female	17	5	22	23	12%
	Male	33	2	35	6	
Tutasi	Female	6	5	11	45	29%
	Male	11	2	13	15	
Uepele	Female	5	7	12	58	47%
	Male	6	3	9	33	
Vaipuna	Female		9	9	100	95%
	Male	1	11	12	92	
Total		198	115	313		36.7

Table 6.4 Secondary school enrolments by year and sex

Motufoua Secondary School						Fetuvalu High School					
Year	Male	Female	Total	Teachers	S/T Ratio	Year	Male	Female	Total	Teachers	S/T Ratio
1991	122	196	318	19	16.7	1991	132	102	234	5	46.8
1992	105	148	253	19	13.3	1992	132	102	234	14	16.7
1993	72	114	186	19	9.8	1993	110	83	193	16	12.1
1994	173	152	325	20	16.3	1994	128	157	285	13	21.9
1995	178	191	369	23	16.0	1995	107	103	210	11	19.1
1996	209	216	425	25	17.0	1996	86	107	193	9	21.4
1997	235	250	485	24	20.2	1997	55	80	135	10	13.5
1998	252	245	497	25	19.9	1998	95	170	265	11	24.1
1999	261	264	525	29	18.1	1999	No enrolment as the school was closed				
2000	269	244	513	30	17.1						
2001	289	269	558	32	17.4						
2002	234	224	458	37	12.4						
2003	237	243	480	40	12.0	2003	44	55	99	8	12.4
2004	228	218	446	41	10.9	2004	102	81	183	11	16.6
2005	192	256	448	41	10.9	2005	72	73	145	15	9.7

Table 6.5 Fiji Junior Results by total and percentage

Motufoua Secondary School					
Year	Student Sat	Student Pass		Student Fail	
		Number	Percentage	Number	Percentage
1994	93	57	61	36	39
1995	127	55	43	72	57
1996	156	59	38	97	62
1997	221	52	24	169	76
1998	152	34	22	118	78
1999	229	57	25	172	75
2000	193	57	30	136	70
2001	183	24	13	159	87
2002	185	62	34	123	66
2003	161	85	53	76	47
2004	169	91	54	78	46
2005	103	89	86	14	14

Fetuvalu High School					
Year	Student Sat	Student Pass		Student Fail	
		Number	Percentage	Number	Percentage
1995	76	12	16	64	84
1996	53	7	13	46	87
1997	83	12	14	71	86
1998	123	10	8	113	92

Table 6.6 In-service and pre-service training by year and sex.

Year	In-service			Pre-service			Total		
	M	F	Total	M	F	Total	M	F	Total
1992	5	1	6	18	21	39	23	22	45
1993	9	5	14	26	16	42	35	21	56
1994	9	1	10	6	9	15	15	10	25
1995	3	4	7	13	18	31	16	22	38
1996	16	5	21	22	30	52	38	35	73
1997	16	3	19	16	22	38	32	25	57
1998	18	4	22	3	2	5	21	6	27
1999	21	12	33	34	36	70	55	48	103
2000	20	10	30	32	47	79	52	57	109
2001	25	11	36	32	38	70	57	49	106
2002	13	6	19	13	18	31	26	24	50
2003	8	5	13	16	21	37	24	26	50
2004	18	15	33	19	20	39	37	35	72
2005	24	18	42	41	41	82	65	59	124
Total	205	100	305	291	339	630	496	439	935

Table 6.7 Tuvalu scholarships by year and course of study

Course of study	1992	1993	1994	1995	1996	1997	1998	1999	2000	2001	2002	2003	2004	2005	Total
Further Studies	29	20	5	15	34	24	0	0	16	9	1	3	27	55	238
Cadet / Engineering Class / Pilot	0	1	0	0	2	2	0	0	1	4	0	0	0	9	19
Certificate	5	13	0	4	3	5	1	17	4	14	4	3	0	2	75
Diploma	4	12	8	5	14	9	6	49	49	41	11	14	18	24	264
Degree	6	7	11	14	17	11	20	28	35	33	30	29	23	26	290
Post-graduate Certificate	0	0	0	0	0	0	0	0	1	0	0	0	0	0	1
Post-graduate Diploma	0	0	0	0	0	0	0	1	0	0	0	1	2	2	6
Master	1	3	1	0	1	5	0	8	3	5	4	0	2	6	39
PhD (Doctrate)	0	0	0	0	2	1	0	0	0	0	0	0	0	0	3
Total	45	56	25	38	73	57	27	103	109	106	50	50	72	124	935

Table 6.8 Scholarships by year and country of study

Country of Study	1992	1993	1994	1995	1996	1997	1998	1999	2000	2001	2002	2003	2004	2005	Total
Fiji	26	33	19	26	48	42	18	53	32	58	30	36	34	57	512
New Zealand	10	7	2	4	7	8	2	7	34	22	14	12	8	4	141
Australia	7	8	0	3	3	0	3	8	14	9	5	1	5	5	71
Samoa	1	0	0	4	1	0	0	6	9	10	1	0	2	1	35
Tonga	0	0	0	0	5	0	0	20	5	0	0	0	0	0	30
Other Pacific Countries	0	4	2	1	8	6	4	3	2	0	0	0	0	3	33
Kiribati	0	0	0	0	0	0	0	5	12	7	0	0	0	0	24
Tuvalu	0	0	0	0	0	0	0	0	0	0	0	1	23	52	76
Other Countries	1	4	2	0	1	1	0	1	1	0	0	0	0	2	13
Total	45	56	25	38	73	57	27	103	109	106	50	50	72	124	935

Table 6.9 Scholarships by year and major sponsors.

Sponsors	1992	1993	1994	1995	1996	1997	1998	1999	2000	2001	2002	2003	2004	2005	Total
Tuvalu	4	11	0	2	17	17	8	88	91	94	32	45	53	90	552
AusAID	18	19	12	15	18	7	10	9	11	8	8	2	9	12	158
NZODA	18	19	9	15	23	28	9	5	7	4	8	3	9	12	169
NBT	0	0	0	0	0	0	0	0	0	0	0	0	0	2	2
Taiwan / ROC	0	0	0	0	0	0	0	0	0	0	0	0	0	3	3
United Kingdom	4	1	0	4	14	4	0	0	0	0	0	0	0	1	28
Other Countries	1	0	1	0	0	1	0	0	0	0	2	0	0	0	5
Organizations	0	6	3	2	1	0	0	1	0	0	0	0	1	4	18
Total	45	56	25	38	73	57	27	103	109	106	50	50	72	124	935

Figure 6.10 Expected number of graduates through the in-service scholarships by sex and years

Qualifications	2000			2001			2002			2003			2004			2005			Total		
	M	F	T	M	F	T	M	F	T	M	F	T	M	F	T	M	F	T	M	F	T
Cadet / Engineering Class / Pilot	0	0	0	0	0	0	1	0	1	0	0	0	0	0	0	4	0	4	5	0	5
Certificate	1	0	1	3	0	3	0	0	0	0	0	0	0	0	0	0	0	0	4	0	4
Diploma	7	4	11	4	3	7	12	4	16	2	0	2	2	0	2	2	7	9	29	18	47
Bachelor of Science	3	0	3	3	0	3	6	2	8	6	1	7	1	0	1	1	0	1	20	3	23
Bachelor of Arts	6	4	10	6	2	8	3	2	5	8	6	14	3	1	4	6	1	7	32	16	48
Bachelor of Education	2	1	3	1	3	4	1	3	4	2	1	3	0	3	3	2	2	4	8	13	21
Post-graduate Certificate	0	0	0	0	1	1	0	0	0	0	0	0	0	1	1	0	0	0	0	2	2
Post-graduate diploma	0	0	0	1	0	1	0	0	0	0	0	0	1	0	1	0	1	1	2	1	3
Masters (Arts)	4	3	7	2	0	2	4	1	5	0	1	1	1	2	3	1	2	3	12	9	21
Masters (Science)	3	0	3	0	0	0	0	0	0	0	0	0	0	0	0	0	0	0	3	0	3
PhD (Doctrate)	1	0	1	1	0	1	0	0	0	0	0	0	0	0	0	0	0	0	2	0	2
Total	27	12	39	21	9	30	27	12	39	18	9	27	8	7	15	16	13	29	117	62	179

Table 7.1 Electricity consumption by consumers and years with revenue and unit usage

Consumer	1996		1997		1998		1999		2000	
	Revenue (\$)	Units	Revenue (\$)	Units	Revenue (\$)	Units	Revenue (\$)	Units	Revenue (\$)	Units
Government	245,408	728,452	298,481	877,884	314,180	920,278	301,466	886,265	454,182	896,357
Commercial	277,815	817,104	290,453	850,396	341,379	1,004,056	348,376	1,024,728	517,335	1,100,725
Households	239,071	703,149	200,885	701,206	200,885	590,843	266,148	782,793	259,168	762,254
Total	762,294	2,248,705	789,819	2,429,486	856,444	2,515,177	915,990	2,693,786	1,230,685	2,759,336

Consumer	2001		2002		2003		2004		2005	
	Revenue (\$)	Units	Revenue (\$)	Units	Revenue (\$)	Units	Revenue (\$)	Units	Revenue (\$)	Units
Government	444,508	945,762	562,746	1,197,334	489,715	1,041,958	645,222	1,372,814	695,656	1,480,121
Commercial	541,681	1,152,515	675,976	1,438,250	738,589	1,571,481	713,946	1,519,036	680,312	1,447,471
Households	308,172	906,396	416,286	1,223,488	410,748	1,208,091	418,011	1,229,445	441,494	1,298,512
Total	1,294,361	3,004,673	1,655,008	3,859,072	1,639,052	3,821,530	1,777,179	4,121,295	1,817,462	4,226,104

Table 7.2 Electricity consumption by months and years with revenue and unit usage

Months	2002						2003					
	Government		Commercial		Households		Government		Commercial		Households	
	Units	\$	Units	\$	Units	\$	Units	\$	Units	\$	Units	\$
Jan	94806	44559	124085	58320	92875	31578	82,071	38,573	113,789	53,480	91,668	31,167
Feb	86679	40739	79428	37331	118524	40298	90768	42661	131978	62029	97837	33265
Mar	74530	35029	123260	57932	85849	29189	86,821	40,805	140,789	66,170	99,959	33,986
Apr	100219	47103	114536	53832	98956	33645	92,525	43,486	128,420	60,357	106,950	36,363
May	99676	46848	122796	57714	106432	36487	93,096	43,755	120,680	56,719	104,463	35,517
Jun	86737	40766	107911	50718	91185	31003	79,786	37,499	120,432	56,603	98,562	33,511
Jul	99352	46695	120321	56551	135152	45952	67,075	31,525	143,680	67,529	88,515	30,095
Aug	93615	43999	131144	61638	106413	36180	78,368	36,832	126,637	59,519	91,007	30,942
Sep	106868	50228	152415	71635	99217	33734	89,084	41,869	125,151	58,820	98,446	33,471
Oct	97312	45737	125473	58972	96211	32712	87,998	41,359	134,738	63,326	109,645	37,279
Nov	152,027	71,452	102,756	48,295	97,327	33,091	91,231	42,878	130,106	61,149	101,913	34,650
Dec	105,513	49,591	134,125	63,038	95,347	32,417	103,135	48,473	155,081	72,888	119,126	40,502
Total	1,197,334	562,746	1,438,250	675,976	1,223,488	416,286	1,041,958	489,715	1,571,481	738,589	1,208,091	410,748

Months	2004						2005					
	Government		Commercial		Households		Government		Commercial		Households	
	Units	\$	Units	\$	Units	\$	Units	\$	Units	\$	Units	\$
Jan	85,388	40,132	116,727	54,861	101,856	34,631	126948	59666	116480	54746	107221	36455
Feb	72,521	34,084	98,318	46,209	79,124	26,902	101288	47605	87901	41313	77817	26458
Mar	86,264	40544	128,014	60167	102,333	34793	102692	48265	116905	54945	97840	33266
Apr	93,727	46266	133,371	62,684	114,264	38850	118607	55745	130066	61131	119168	40517
May	110,481	51926	124,717	58617	92,182	31342	118039	55478	108378	50938	107502	36551
Jun	118,175	55542	136,627	64215	105,403	35837	126773	59583	99395	46716	108691	36955
Jul	110,982	52162	131,157	61644	100,622	34211	136241	64033	133933	62949	110190	37465
Aug	162,195	76232	118,533	55711	100,903	34307	131094	61614	122592	57618	105671	35928
Sep	144,034	67696	112,937	53080	110,796	37671	125756	59105	120863	56806	103616	35229
Oct	132,308	62185	103,781	48777	94,324	32070	132878	62453	136710	64254	119401	40596
Nov	130,510	61340	134,293	63118	114,240	38842	147457	69305	148403	69749	127321	43289
Dec	126,229	59328	147,617	69380	117,398	39915	112348	52804	125845	59147.15	114074	38785.16
Total	1,372,814	647,437	1,486,092	698,463	1,233,445	419,371	1,480,121	695,656	1,447,471	680,312	1,298,512	441,494

TECHNICAL NOTES

1. **Consumer Price Index** - The consumer price index is a measure of the change in the price of goods and services that were purchased. It is calculated by measuring the change in price over time of a range of products purchased and consumed.
2. **Imports** - The value of imports of goods is derived from the Customs documents. The 'CIF' valuation indicates the cost of getting the goods to Tuvalu (freight costs and costs of insuring the goods while in transit) are included whereas the 'FOB' (Free on Board) valuation excludes freight and insurance costs.
3. **Migration** – The migration figures are derived from the immigration cards completed on arrival or departure from Tuvalu. Visitors to Tuvalu are defined as those who are intending to stay in Tuvalu for less than one year. Arrivals who intend to stay in Tuvalu for a year or more are treated as resident arrivals.
4. **Health** – The health figures are derived from records of the Medical Department.
5. **Resident population** - Is the number of people who are usual resident of a particular place regardless of their nationality. People from other nationality who have spend more than 12 months in a particular place would be regarded as residents of that particular area.
6. **Population** – The population figures are derived by adjusting the benchmark population figure of the 2002 Census of Population, the number of births, deaths and inward and outward migration of residents.
7. **Education** – The education figure are derived from records the Department of Personnel and Training, Education Department and the Tuvalu Maritime School.
8. **Pre-service training** - Are study program awarded to student who have completed either form 5 or 6 at secondary school level and had never been working in the public service.
9. **In-service training** - Refers to study program awarded by the Government of Tuvalu to civil servant, employees of public corporations and organizations from the private sector.
10. **Electricity** - The Electricity figure are derived from the records of the Tuvalu Electricity Department.