



Government of Tuvalu

Ministry of Finance, Economic Planning & Industries

Quarterly Statistical Report

December Quarter 2004

**Central Statistics Division
Ministry of Finance, Economic Planning & Industries
Government of Tuvalu
Fax: (688) 20210 Phone (688) 20107
August 2005**

PREFACE

The contents of this report highlights the latest statistics about Tuvalu. The report contains the Consumer Price Index (CPI), Migration, Health, Population and Education statistics. The format of the report follows the previous reports and these statistics will be updated with each quarterly report when new data become available.

In this edition, a new section on Electricity is included. The section on Trade statistics is excluded due to several problems with the trade software and will be included in our future editions once the problems are resolved.

Data for the earlier years of some of the series are can be obtained upon request from our office. We appreciate your cooperation in providing our office any statistical information that can be included in this report. We also welcome any feedback, comments or suggestions in improving the contents of this report.

A lot of thanks to the office staff who were involved in compiling this report and so as to our data providers for their contribution and support in providing the relevant raw data and statistics.

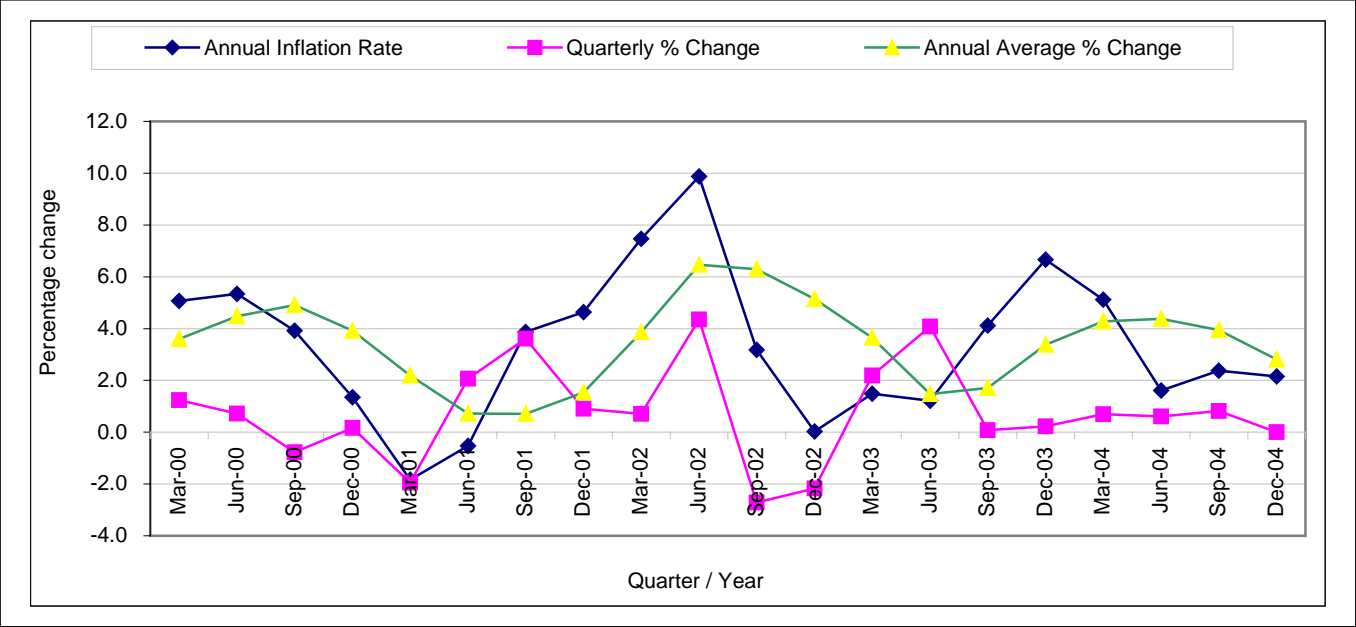
Semu Malona
Government Statistician
Ministry of Finance, Economic Planning and Industries
05 May 2005

<i>CONTENTS</i>	<i>Page</i>
CONSUMER PRICE INDEX	1
MIGRATION	2
HEALTH	6
POPULATION	8
EDUCATION	9
ELECTRICITY	15
APPENDIX	16
TECHNICAL NOTES	29

1. TUVALU CONSUMER PRICE INDEX

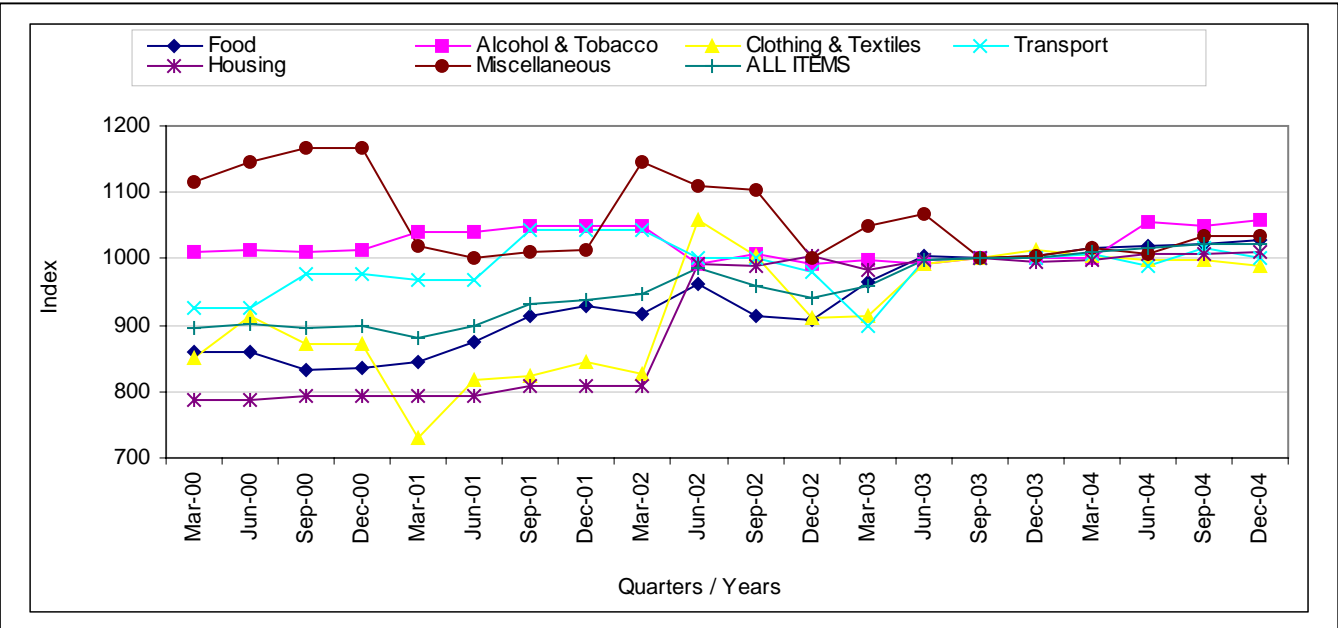
Graph 1.1 shows the fourth quarter 2004 of the CPI experiences a quarterly increase of 0.004%. The increase brings the annual inflation rate to 2.8% (Refer to Table 1.1)

Graph 1.1: Percentage change of the Tuvalu Consumer Price Index by quarters



Graph 1.2 shows the contributions of major groups onto the CPI since 2000. Most groups show a quarterly increase over the last three months except for *Clothing & Textiles* and *Transport* groups. (Refer to Table 1.2).

Graph 1.2: Quarterly index of the groups that contribute to the CPI

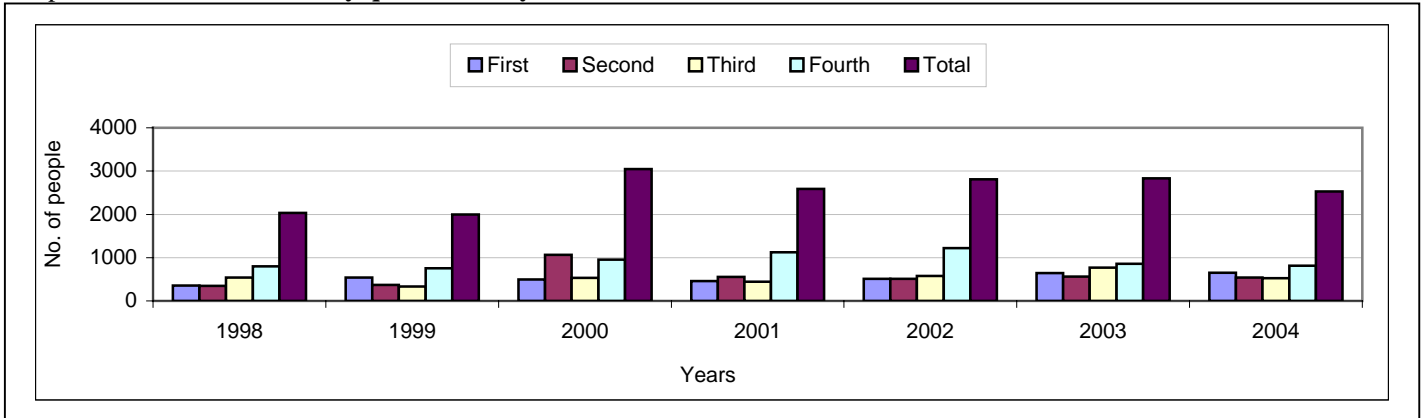


2. MIGRATION

2.1 RESIDENT ARRIVALS

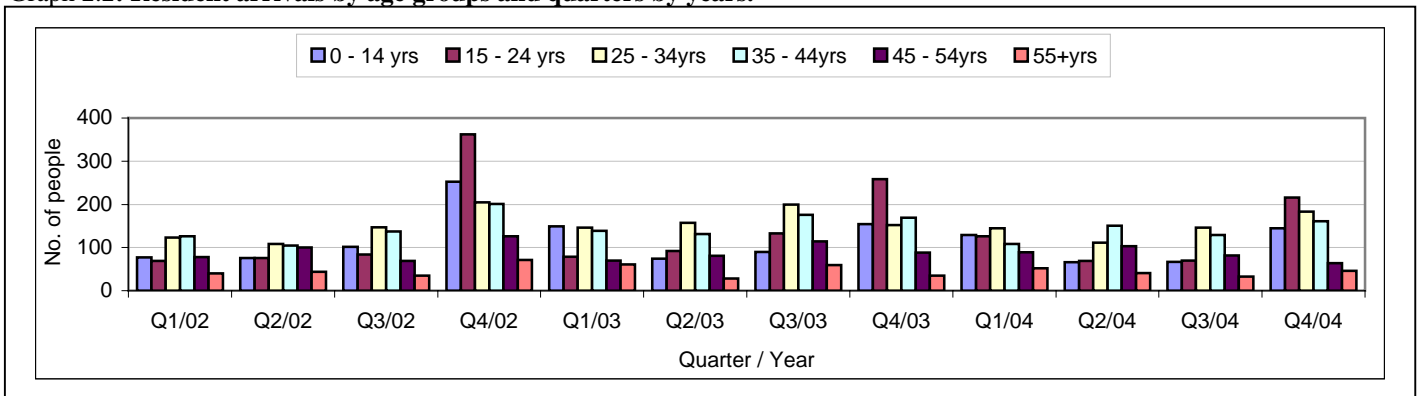
Graph 2.1 shows a general trend where residents are mostly coming into the country at the fourth quarter of the year. Most of these arrivals are students returning residents for Christmas holidays. (Refer to Table 2.1).

Graph 2.1: Resident arrivals by quarters and years



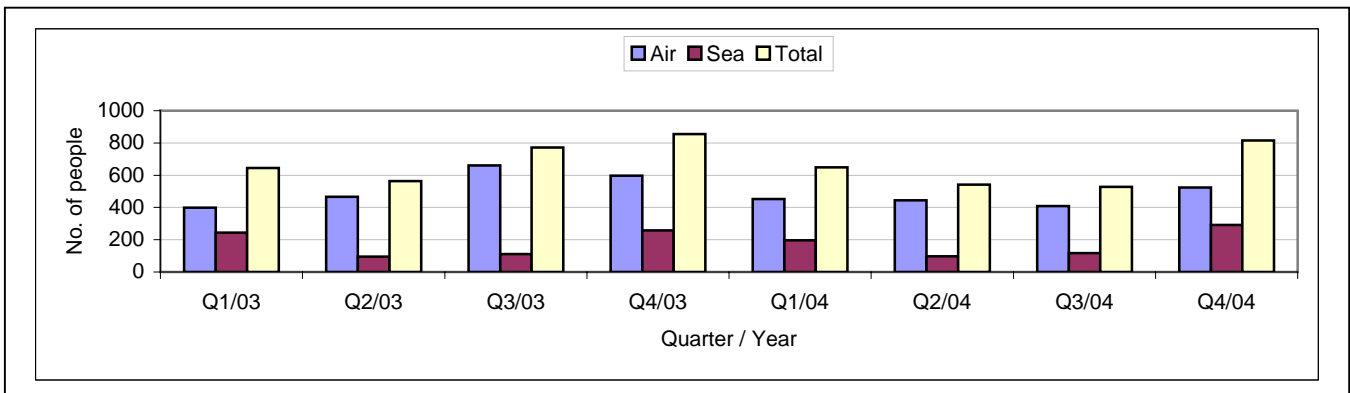
Graph 2.2 shows that most arrivals in the fourth quarter were from the age group of 15-24 with 258 and 216 respectively. (Refer to Table 2.2).

Graph 2.2: Resident arrivals by age groups and quarters by years.



Graph 2.3 shows the fourth quarter 2004 arrivals by air and sea were 524 and 291 respectively. Most residents travelled into the country by planes rather than by ships. (Refer to Table 2.5).

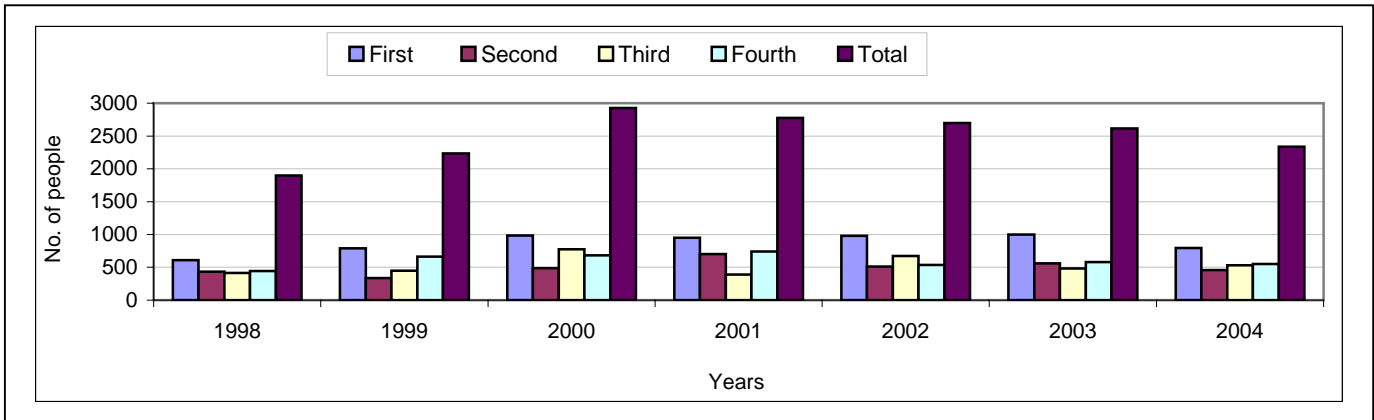
Graph 2.3: Resident arrivals by mode of transport and quarters by years



2.2 RESIDENT DEPARTURES

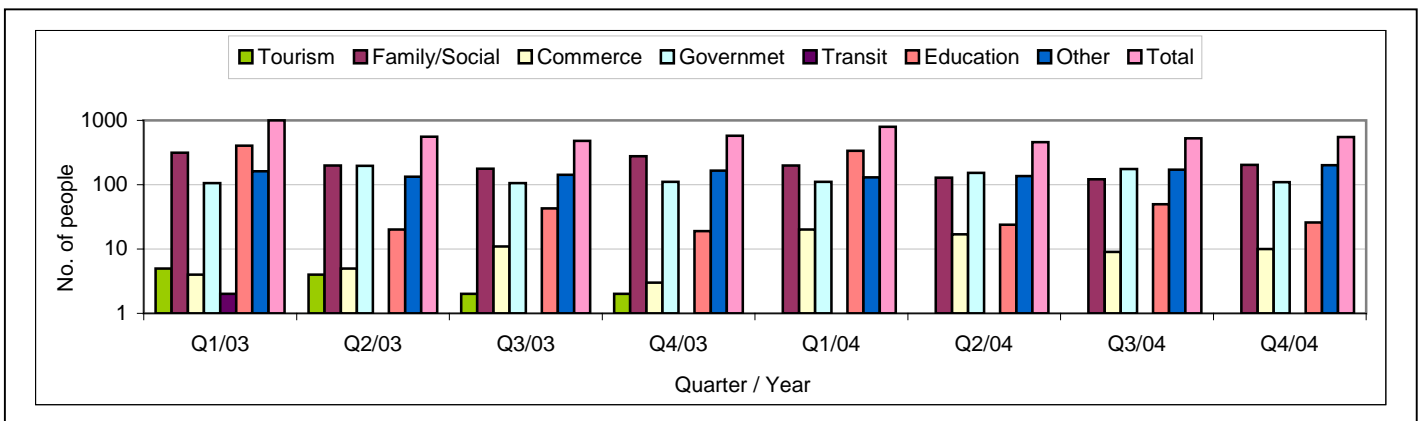
Graph 2.4 shows a decrease in departures by 4.8% from the fourth quarter of 2003 to the fourth quarter of 2004 with 2617 and 2336 respectively. Most of the departures occurred at the first quarter of every year where the students are returning to their schools. (Refer to Table 2.6).

Graph 2.4: Resident departures by quarters and years



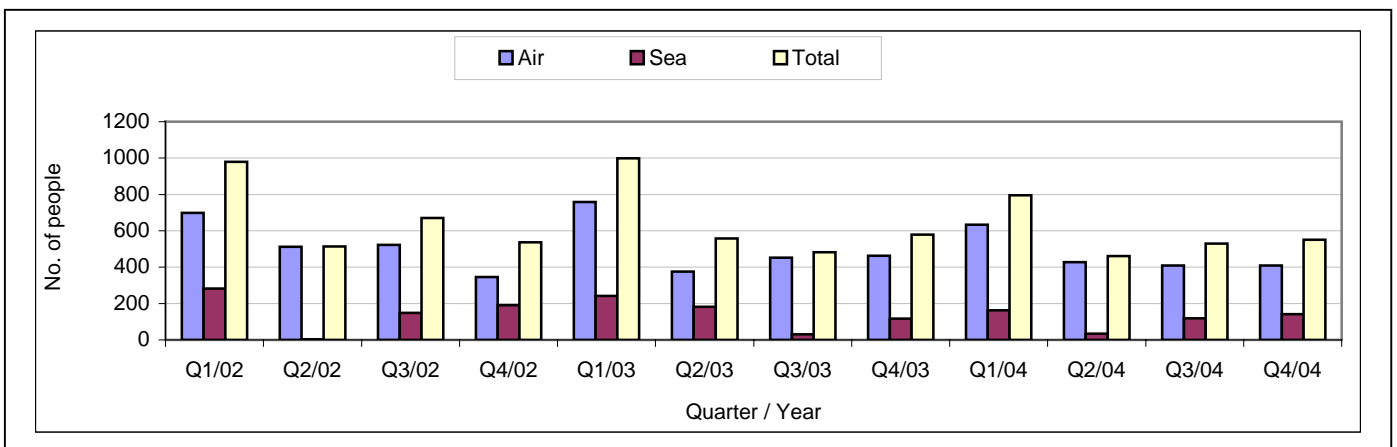
Graph 2.5 shows that most departures were from the group of Family/Social, Government and Education purposes with 28%, 23.5% and 27.4% respectively out of all the resident departures for 2004. (Refer to Table 2.7).

Graph 2.5: Resident departures by quarters/years and purpose of travel



Graph 2.6 indicates that most residents left the country travelled by planes. The 2004 departures by air and sea were 1880 and 456 respectively. (Refer to Table 2.7 and 2.9).

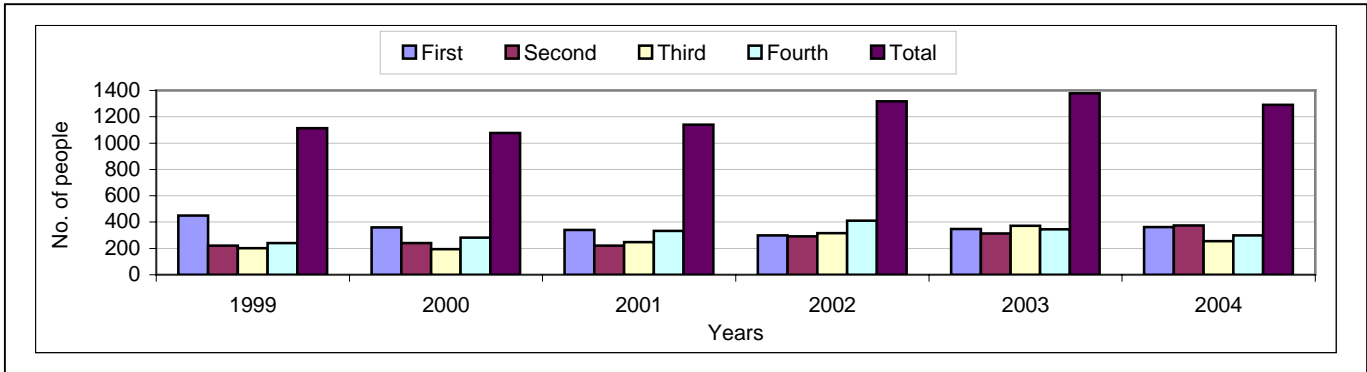
Graph 2.6: Resident departures by quarter/year and mode of travel



2.3 VISITOR ARRIVALS

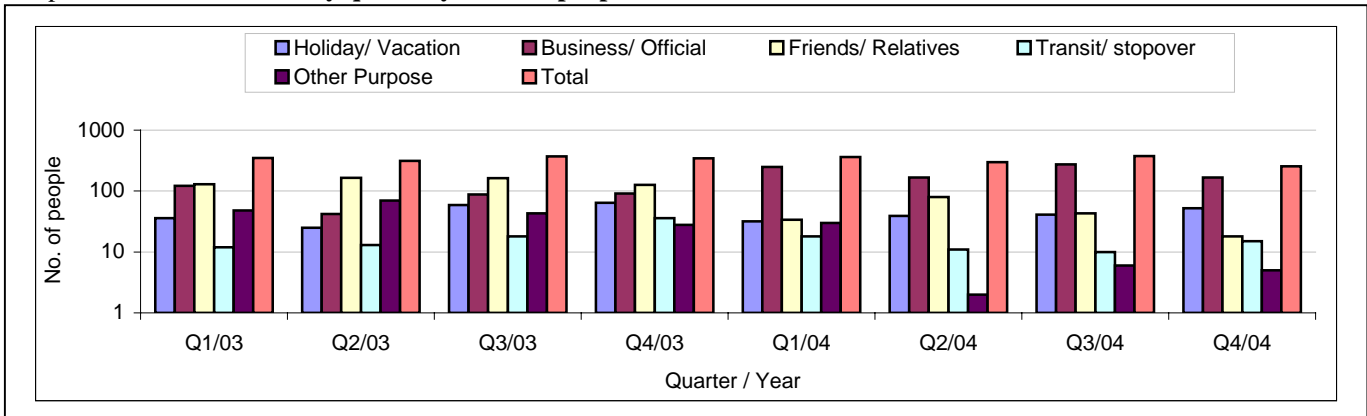
Graph 2.7 shows a decrease of 6% from 2003 to 2004 with 1377 and 1290 respectively. (Refer to Table 2.10).

Graph 2.7: Visitor arrivals by quarter and years



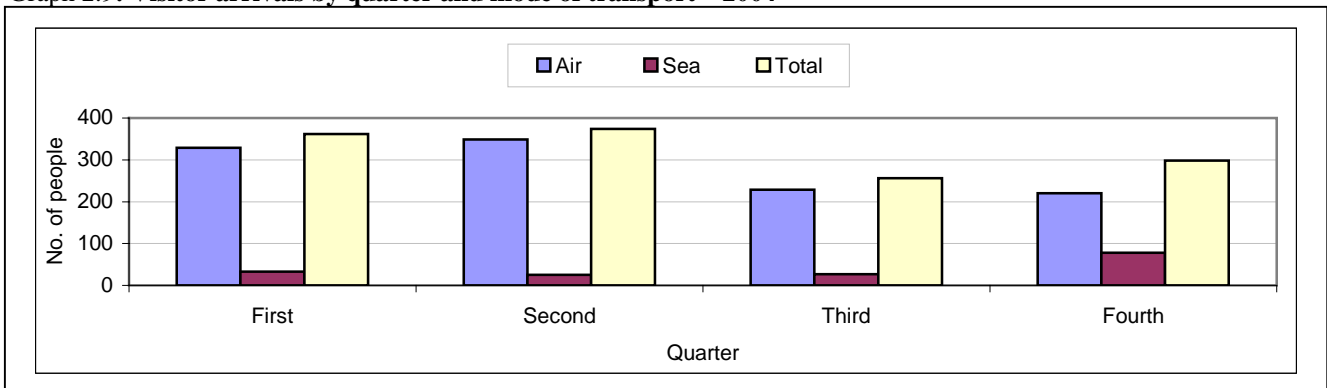
Graph 2.8 shows that most of the arrivals for the fourth quarter 2004 were for Business/Official purposes with 166 and Holiday/Vocational with 52. (Refer to Table 2.11).

Graph 2.8: Visitor arrivals by quarter/years and purpose of visit



Graph 2.9 shows that most arrivals into the country were by air with 1127. (Refer to Table 2.13).

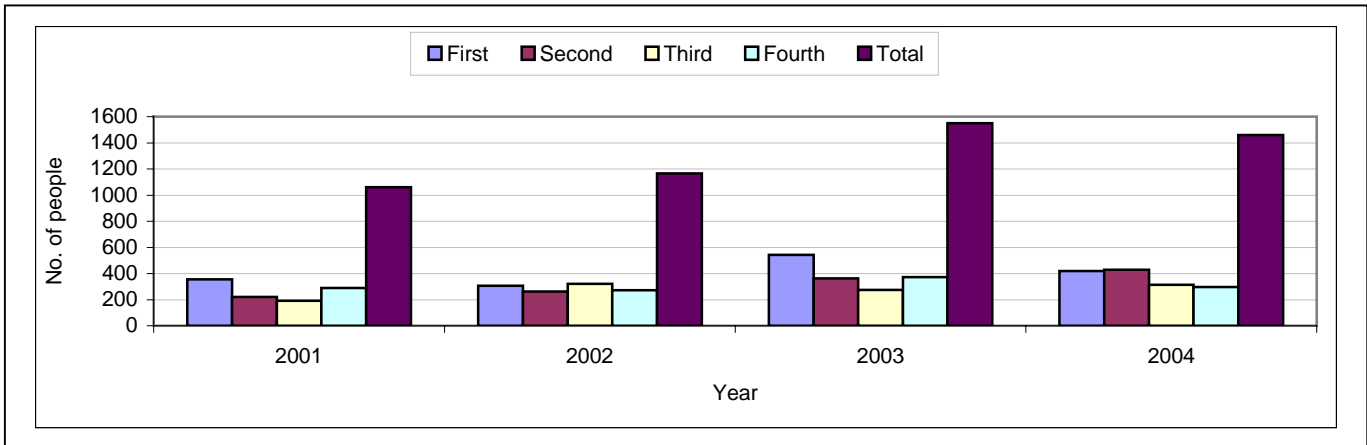
Graph 2.9: Visitor arrivals by quarter and mode of transport – 2004



2.4 VISITOR DEPARTURES

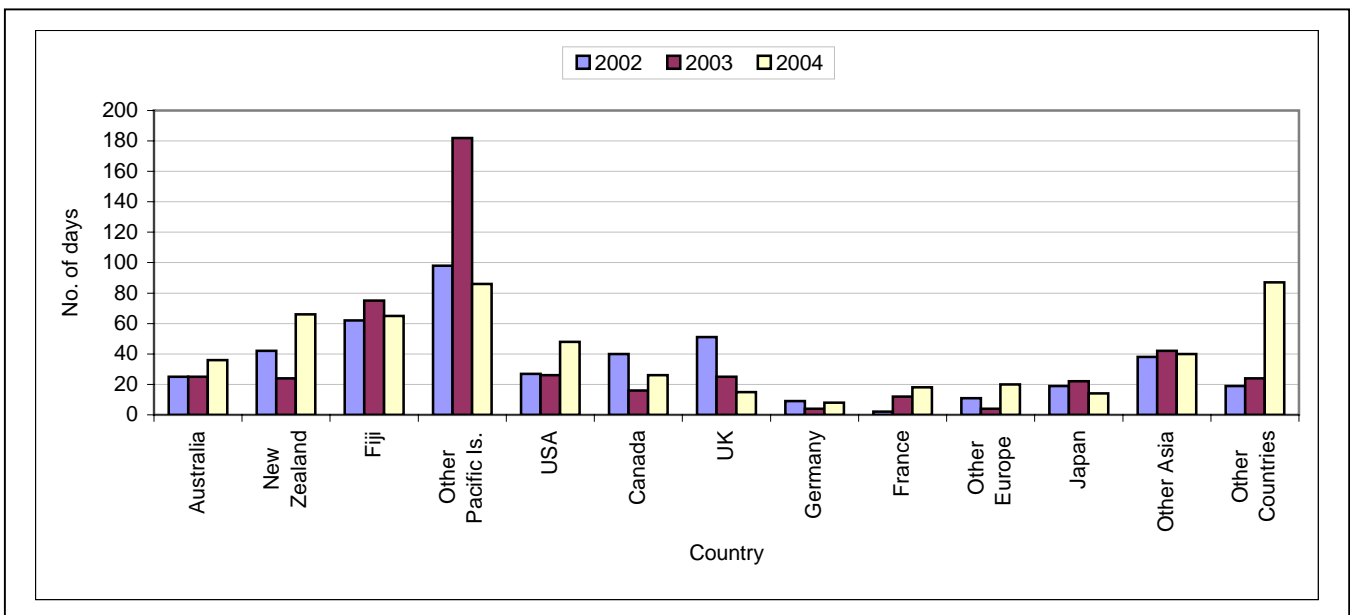
A decrease of 5.9% in the total departures from 2003 to 2004 (i.e. from 1551 to 1460) provided in Graph 2.10. (Refer to Table 2.15).

Graph 2.10: Visitor departures by quarter and year



Graph 2.11 shows that apart from Other Countries, Other Pacific Islanders record the highest average of 86 days followed by New Zealand people with 66 days for this year.

Graph 2.11: Visitor average length of stay in days by year

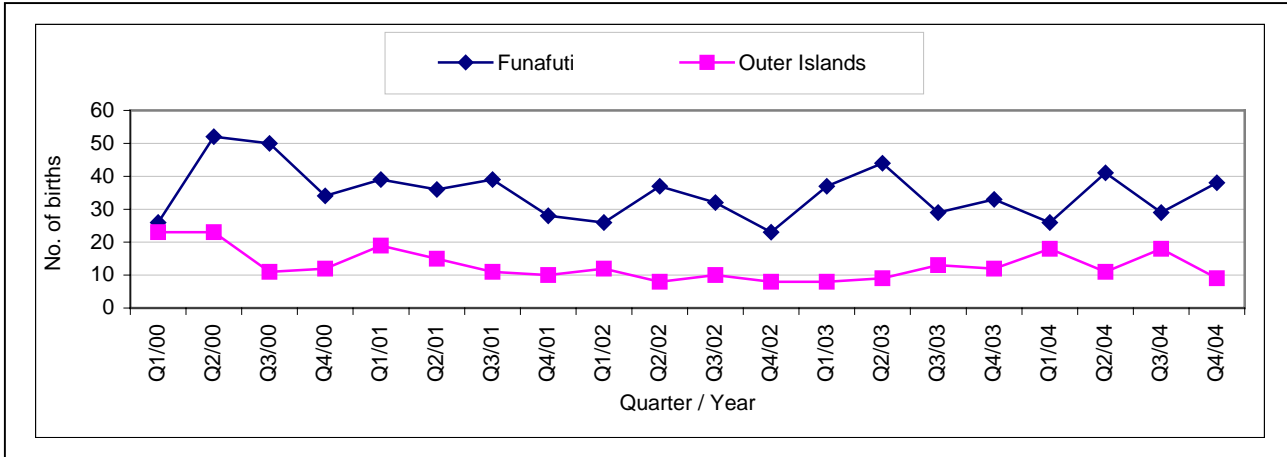


3. HEALTH

3.1 BIRTHS

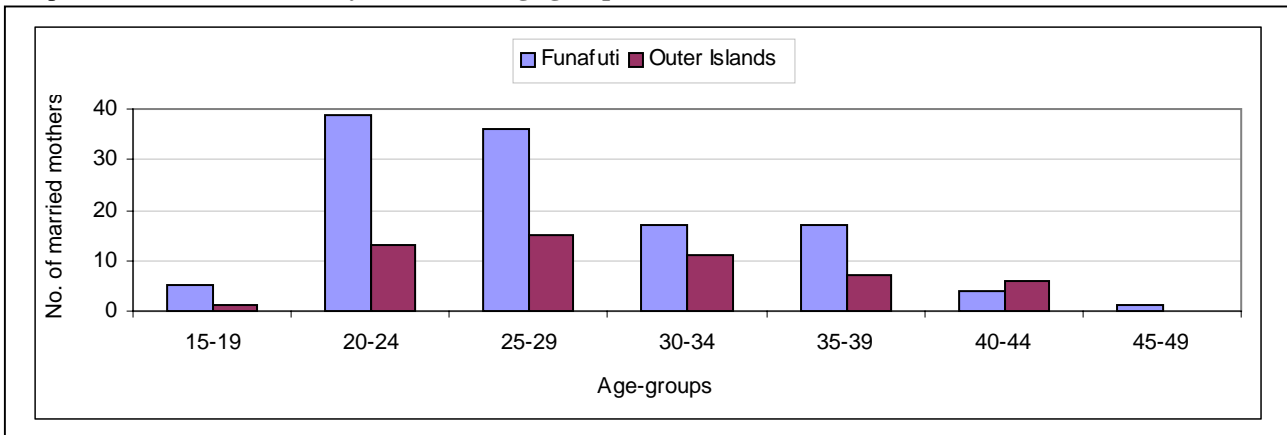
Graph 3.1 provides a trend of births that occurred in Funafuti and the Outer Islands. Total births had increased from 2003 (185) to 2004 (190) by 2.7%. (Refer to Table 3.1).

Graph 3.1: Quarterly births by islands

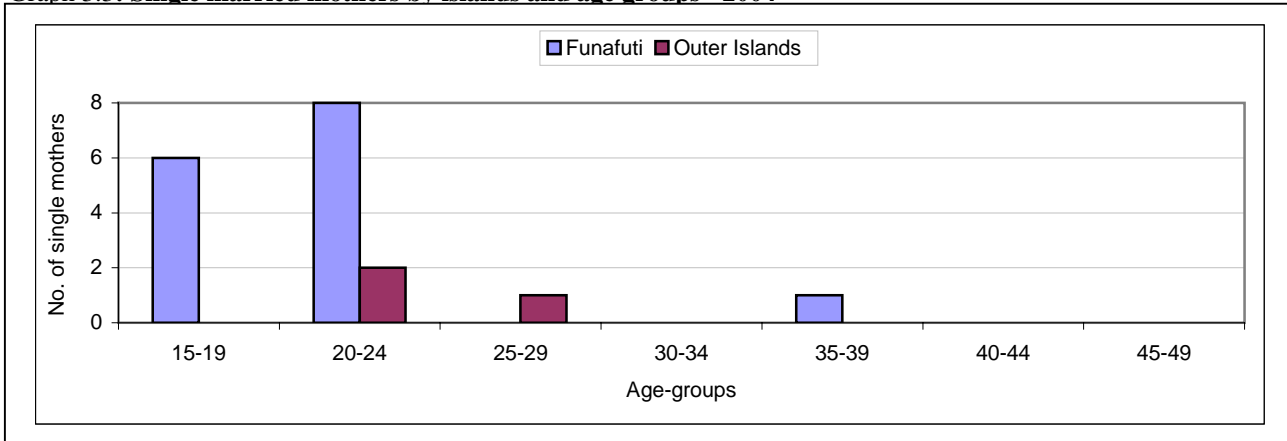


Graphs 3.2 and 3.3 both indicate the age group 20–24 years as the most active for both married and single mothers with 52 and 10 respectively. (Refer to Tables 3.3).

Graph 3.2: Married mothers by islands and age groups - 2004

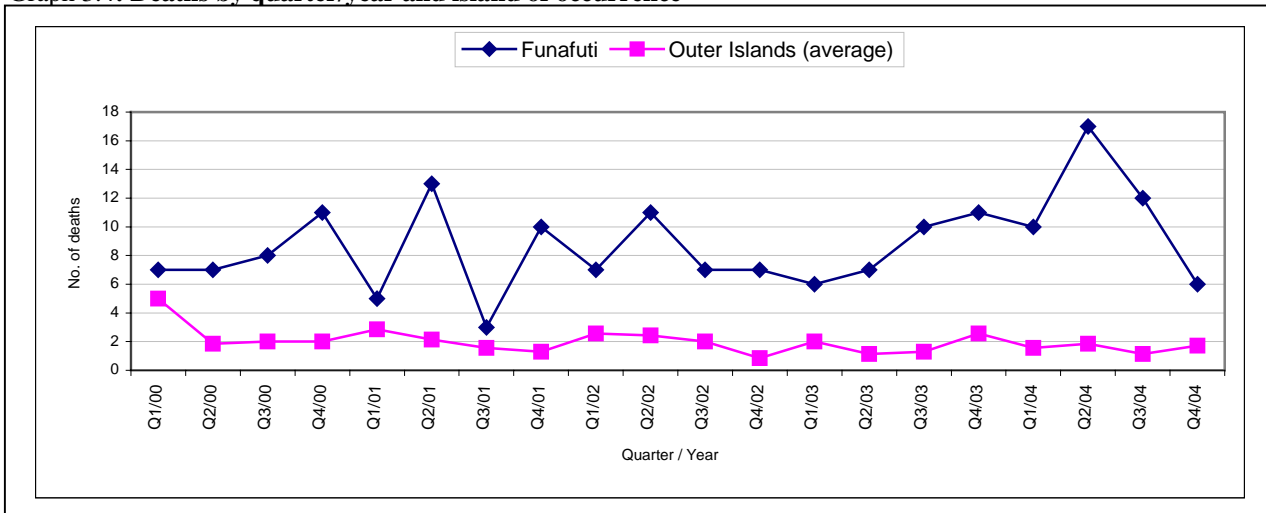


Graph 3.3: Single married mothers by islands and age groups - 2004



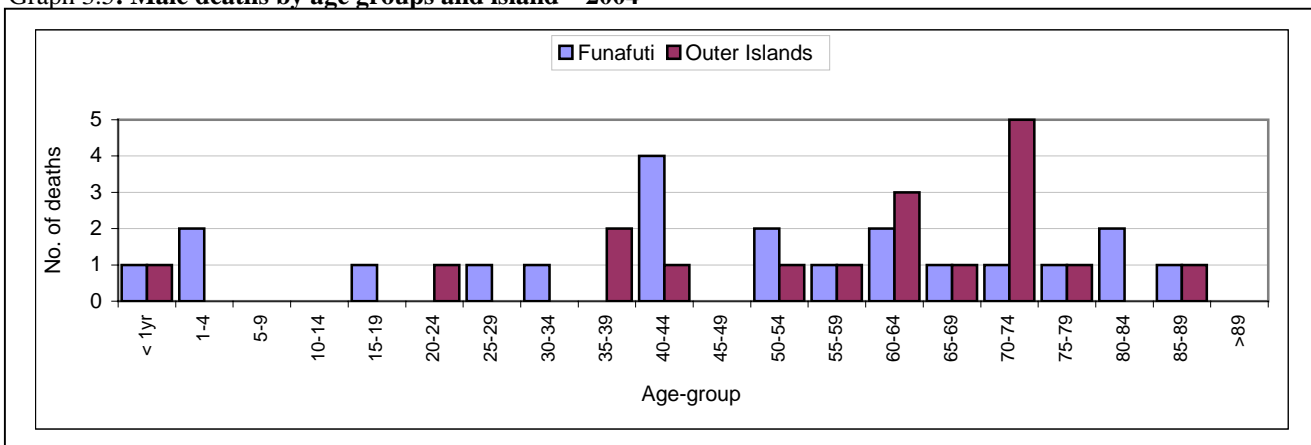
Graph 3.4 shows that more deaths occurred on Funafuti compared to the average number of deaths in the Outer Islands. The total number of deaths in 2003 compared to 2004 increased from 83 to 89. (Refer to Table 3.4).

Graph 3.4: Deaths by quarter/year and island of occurrence



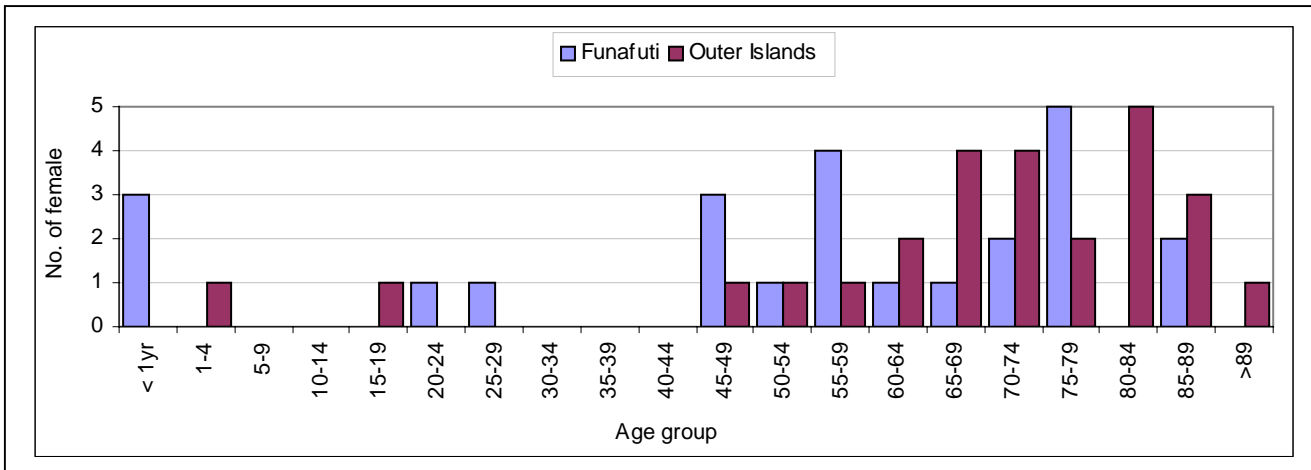
Graph 3.5 indicates that most male deaths occurred in the age group 70-74 with 6 deaths followed by the age group 40-44 and 60-64 with 5 number of deaths (Refer to Table 3.7).

Graph 3.5: Male deaths by age groups and island – 2004



Graph 3.6 indicates that most female deaths occurred in the age group 75-79 and 70-74 years with 7 and 6 number of deaths respectively. (Refer to Table 38).

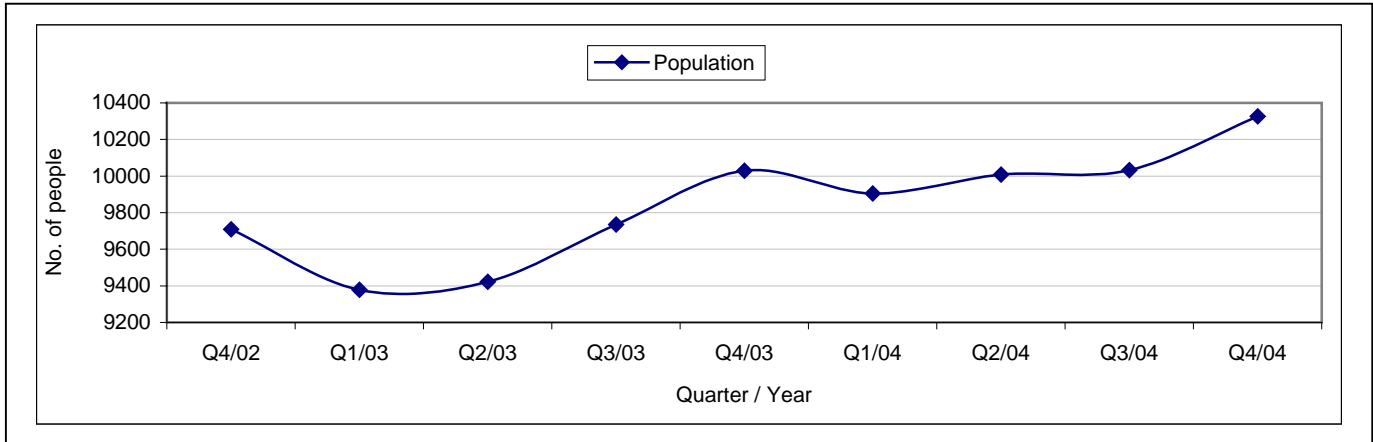
Graph 3.6: Female deaths by age groups and island – 2004



4. POPULATION

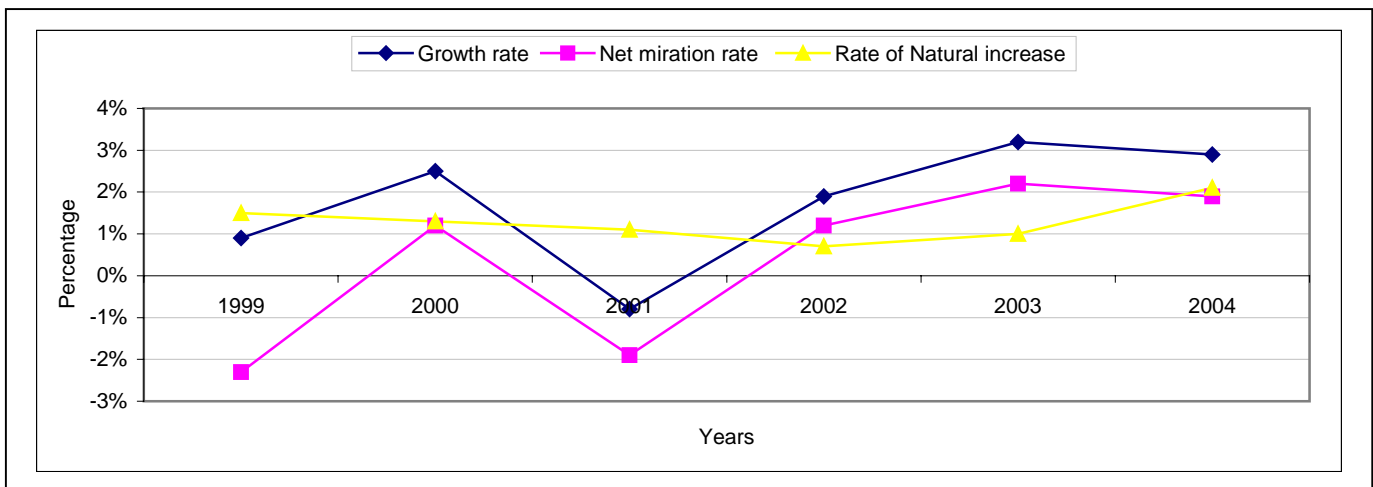
Graph 4.1 depicts the resident population as 10326 at the end of the fourth quarter 2004, a 2.9% increase from the population of 10029 at the end of the fourth quarter 2003. (Refer to Table 4.1)

Graph 4.1: Resident estimated population by quarter and years



Graph 4.2 shows that the rate of natural increases from 1% to 2.1% and the net migration rate decreases from 2.2% to 1.9% resulted in the annual growth rate of 2.9%. (Refer to Table 4.2 and 4.3).

Graph 4.2: Rates of resident population changes by years

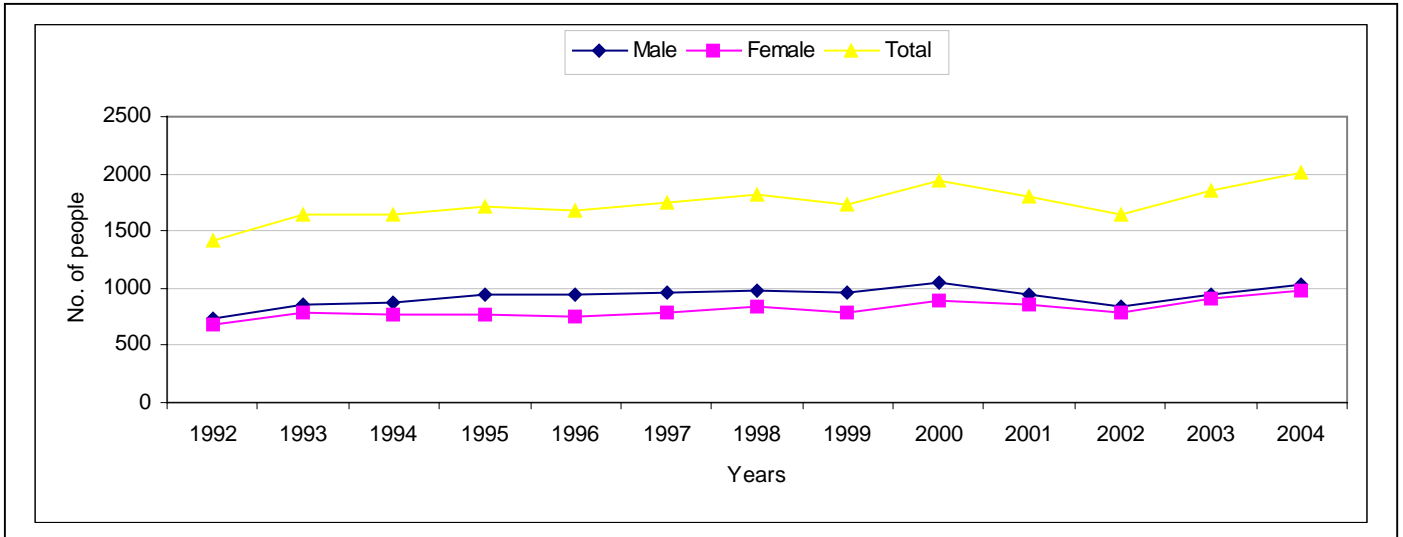


5. EDUCATION

5.1 PRIMARY SCHOOL

Graph 5.1 expresses the enrolment trend of Primary school level is at an increasing rate with more boys than girls at every year since 1992. From 2003 to 2004, the enrolment for males increases from 945 to 1035, females from 914 to 975 since 2003. (Refer to Table 5.1).

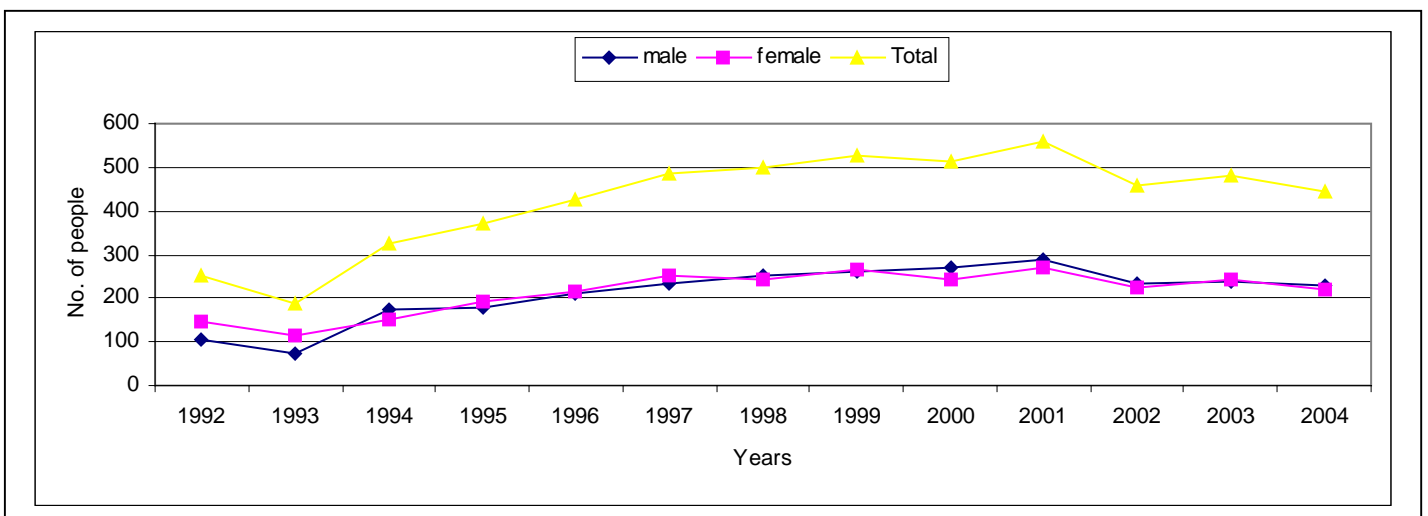
Graph 5.1: Primary school enrolment by year and sex.



5.2 SECONDARY SCHOOL

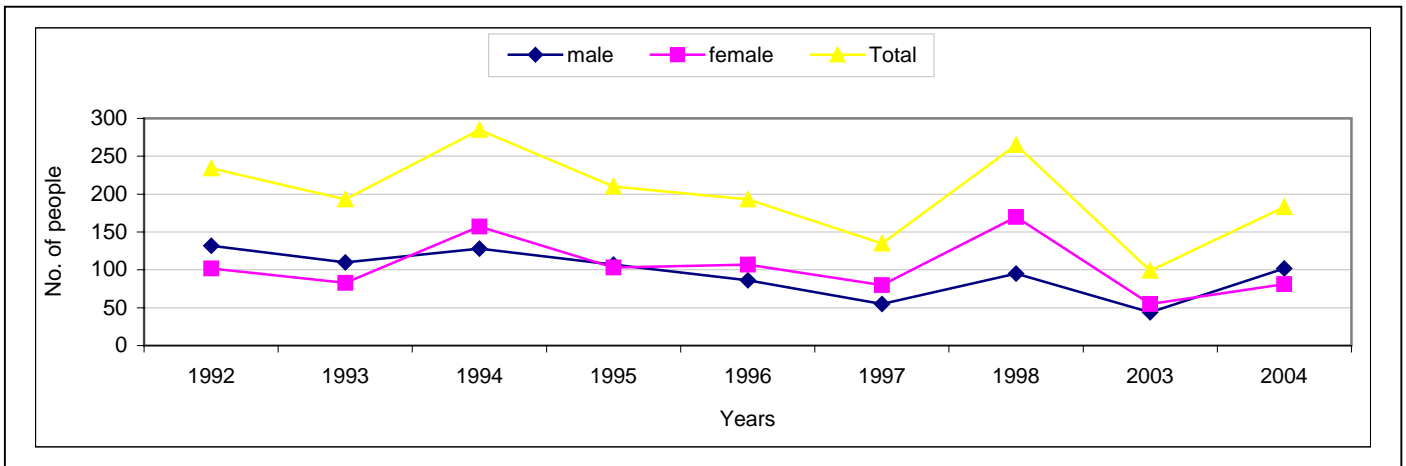
Graph 5.2 shows a significant decline in the enrolment level at Motufoua Secondary School (MSS) in 1992 and 1993 with a rapid increase following these years. The decline was a result of the discontinued intake of Form 1 and 2 by the School as they are accommodated at Primary School level. As for the rapid increase in the enrolment number since 1994 is a direct result of the introduced program called **Education for Life** in which all the students are absorbed into the system without sitting for an entrance exam. There is a significant drop in the enrolment level at MSS in 2002 as most students opted to go to study in Fiji. The Motufoua Entrance Examination was introduced again in 2003, which is obvious in the small number enrolled in the year 2004. (Refer to Table 5.2).

Graph 5.2: Motufoua Secondary School enrolment by year and sex.



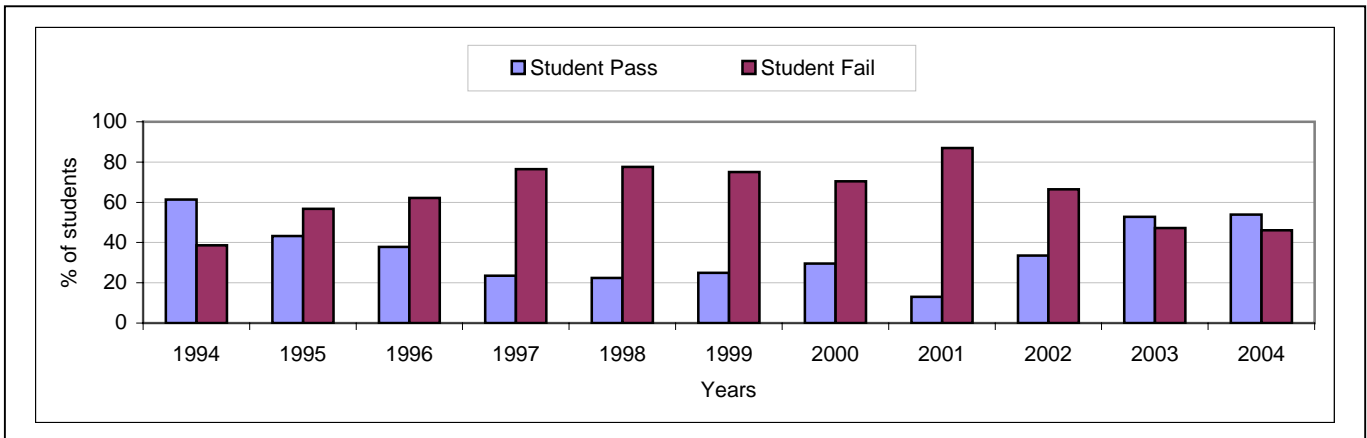
Graph 5.3 shows that Fetuvalu High School ceased its operation in 1998 and started again in 2003 with Form 3 the only intake. At the beginning of this year (2004) the school offered places for Form 4 student. (Refer to Table 5.2).

Graph 5.3: Fetuvalu High School enrolment by year and sex.



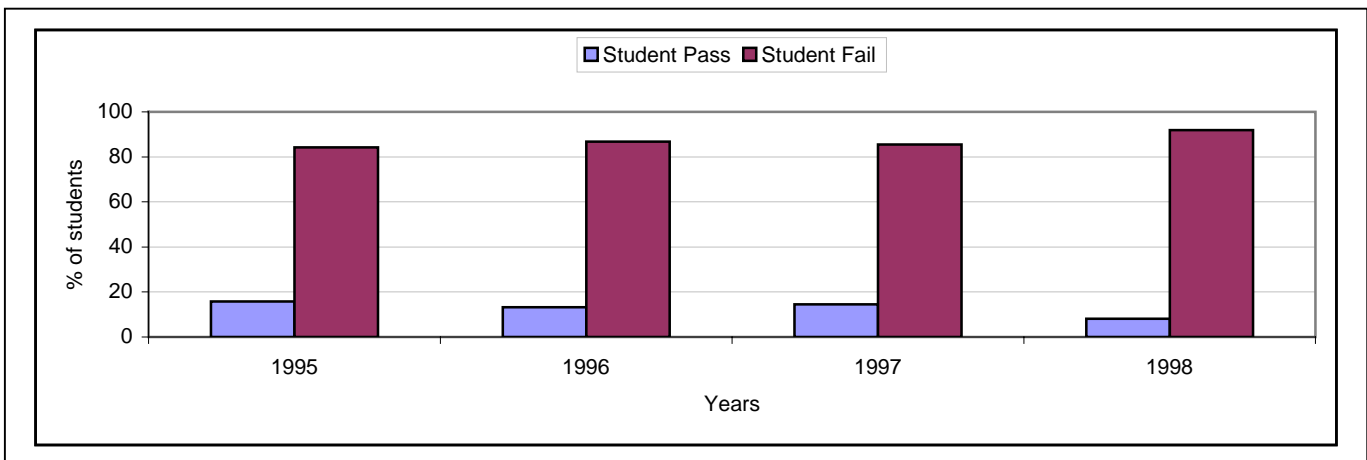
Graph 5.4 shows that in 1995 to 2003, the failure rate is higher than the passing rate for the Fiji Junior Examination at MSS. The years 2003 and 2004 showed a higher passing rate than the failure rate. (Refer to Table 5.3).

Graph 5.4: Fiji Junior results (Motufoua Secondary School)



Graph 5.5 shows a similar situation in the case of Fetuvalu High School regarding student who sat for the Fiji Junior Examination (FJC) for the given years. Figures for 1993 and 1994 were not available, while Fetuvalu High School was only up to Form 3 in 1991 and 1992. (Refer to Table 42).

Graph 5.5: Fiji Junior results (Fetuvalu High School)

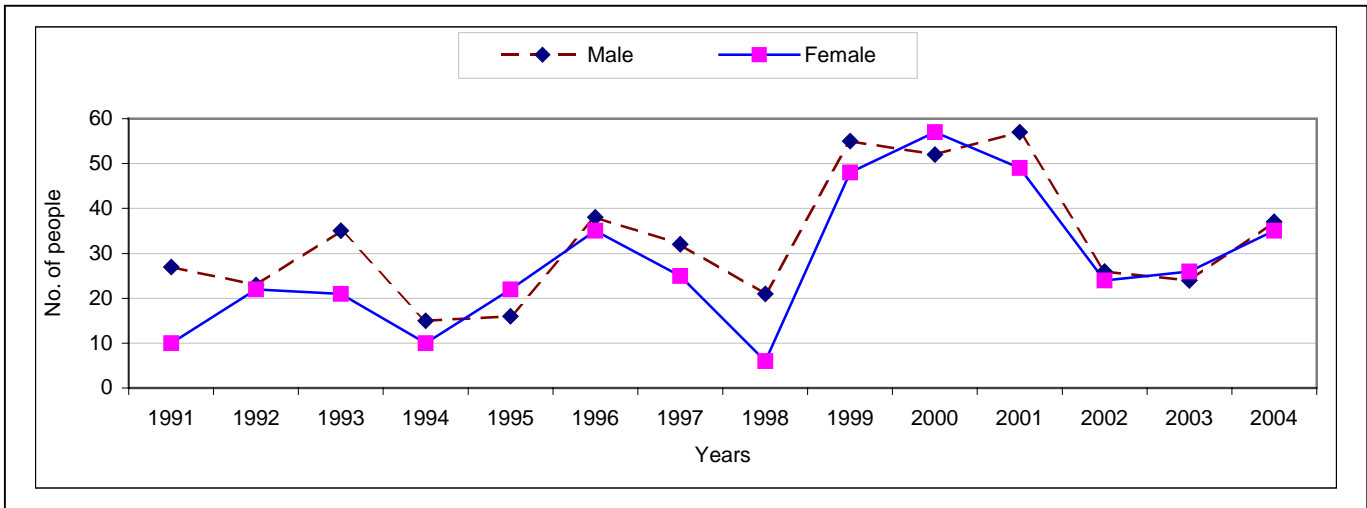


5.3 IN-SERVICE AND PRE-SERVICE TRAINING

This sections looks at the number of first year awardees in-service and pre-service trainings of Tuvalu.

Graph 5.6 shows that the scholarships students through in-service and pre-service in most of the years were males with the exceptions of 1995, 2000 and 2003. (Refer to Table 5.4).

Graph 5.6: Scholarships by year and sex



Graph 5.7 shows that more trainings were awarded for pre-service as compared to in-service training for most of the given years with the exception of 1998. Pre-service training fluctuates over the years compared to a gradual increase seen in the number of in-service training over the same period. (Refer to Table 5.4).

Graph 5.7: In-service and pre-service training by year

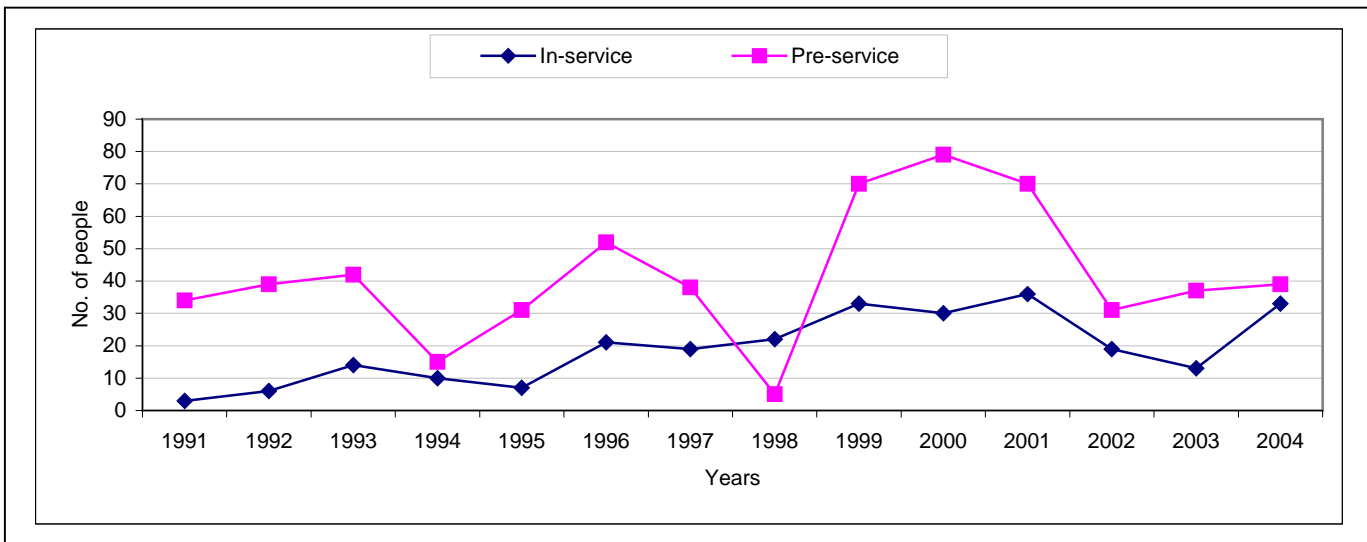
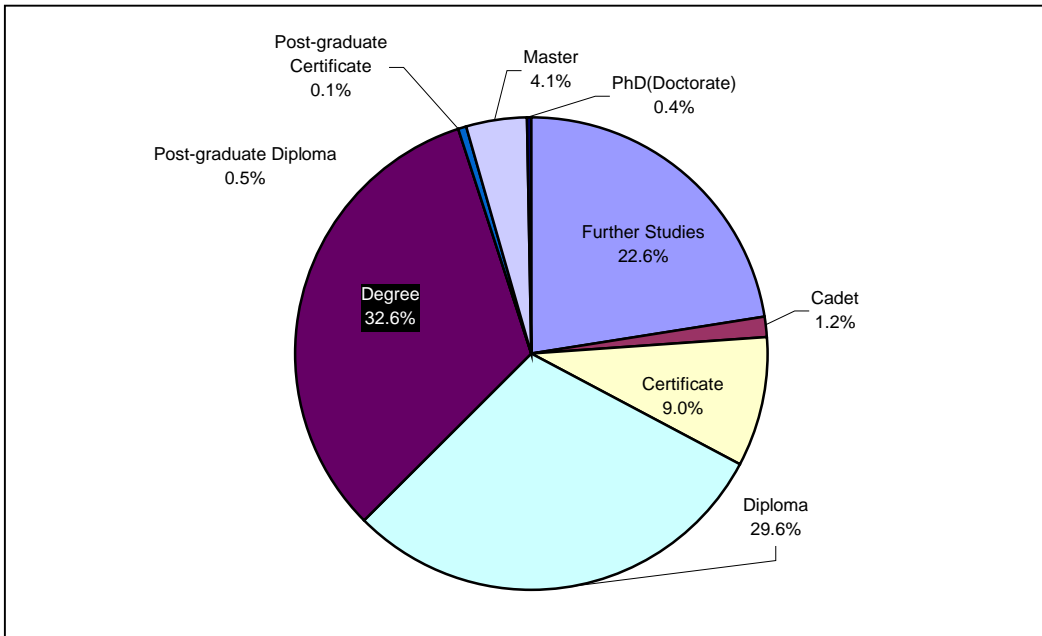


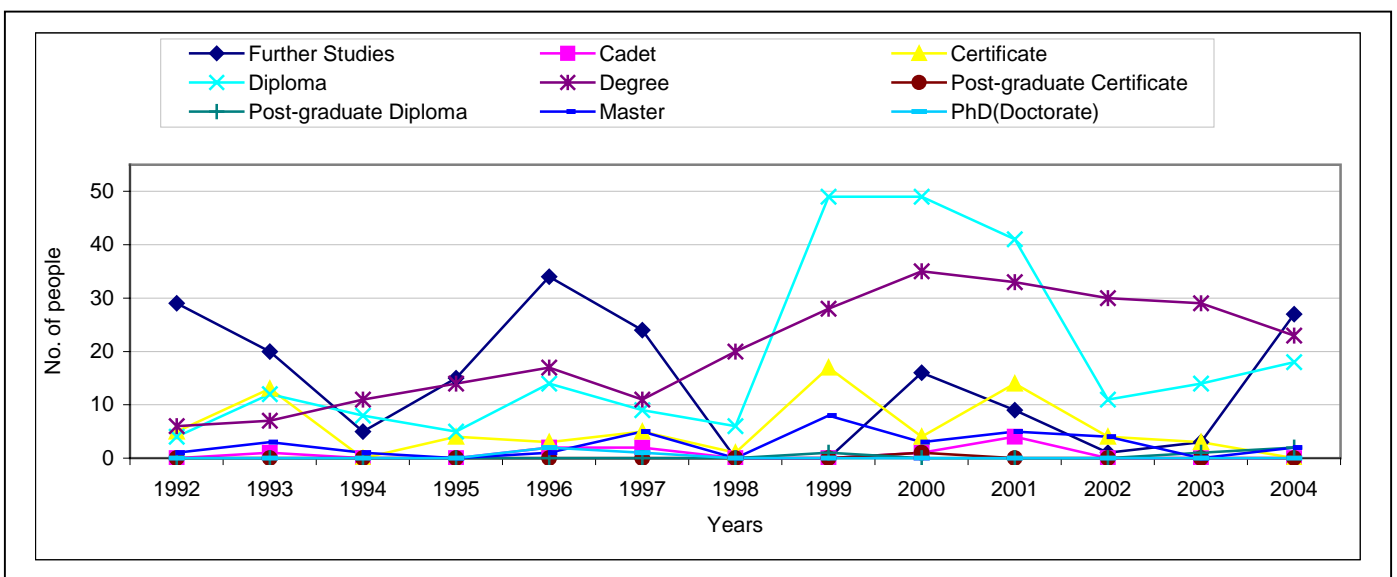
Figure 5.8 shows that from 1992-2004, the aggregate total of awards is 811. The highest proportion of overseas training courses was dominated by student pursuing degree and diploma courses with 32.6% and 29.6% respectively. The number of student on **further studies** are mostly pre-service student with 22.6% who were undertaking form 6 and 7 before taking up their proposed program of studies at tertiary institutions. (Refer to Table 5.5).

Figure 5.8: Aggregate scholarships by courses 1992-2004



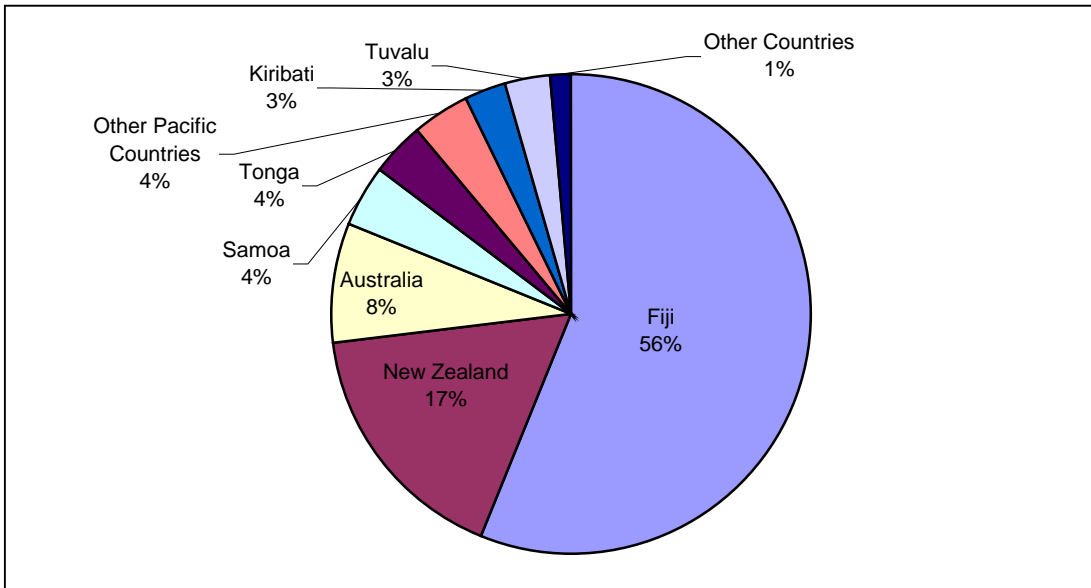
Graph 5.9 depicts the number of students pursuing diploma and degree levels show an increasing trend over the years.(Refer to Table 5.5).

Graph 5.9: Tuvalu scholarships by level of studies and year



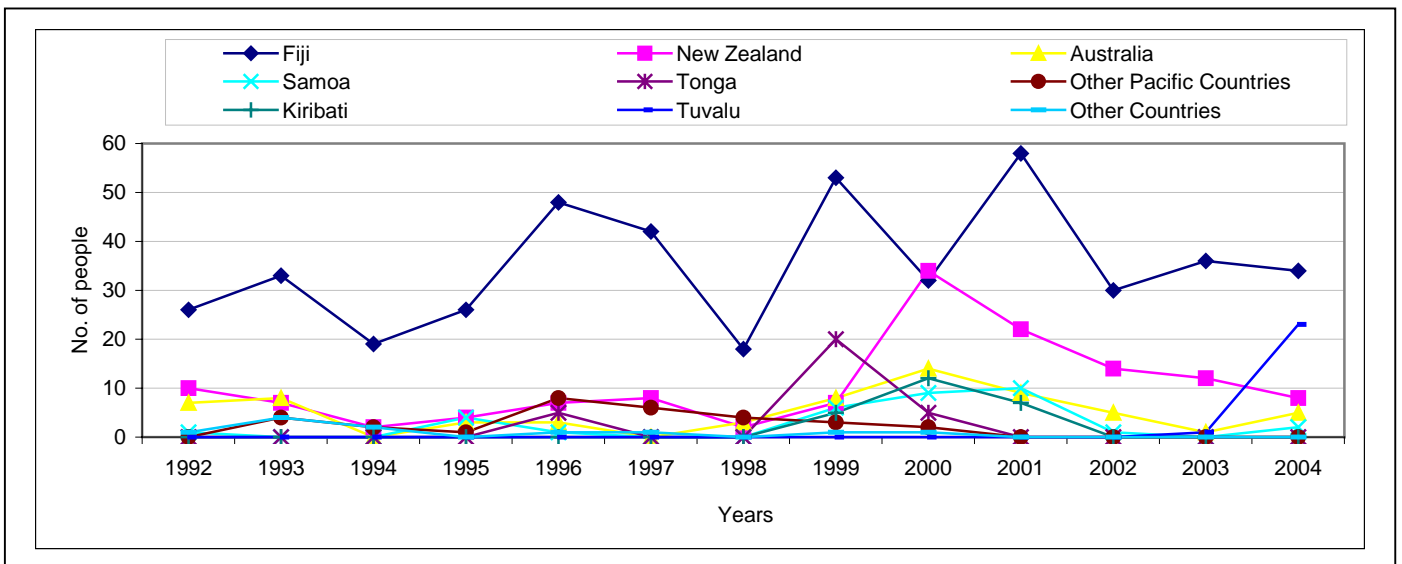
In Figure 5.10, Fiji accounted for more than half (56%) of the students through in-service and pre-service trainings since 1992, with New Zealand and Australia having 17% and 8% respectively. Other Pacific countries shared the smaller proportion with other countries having the least. (Refer to Table 5.6).

Figure 5.10: Aggregate scholarships by country of study 1992-2004



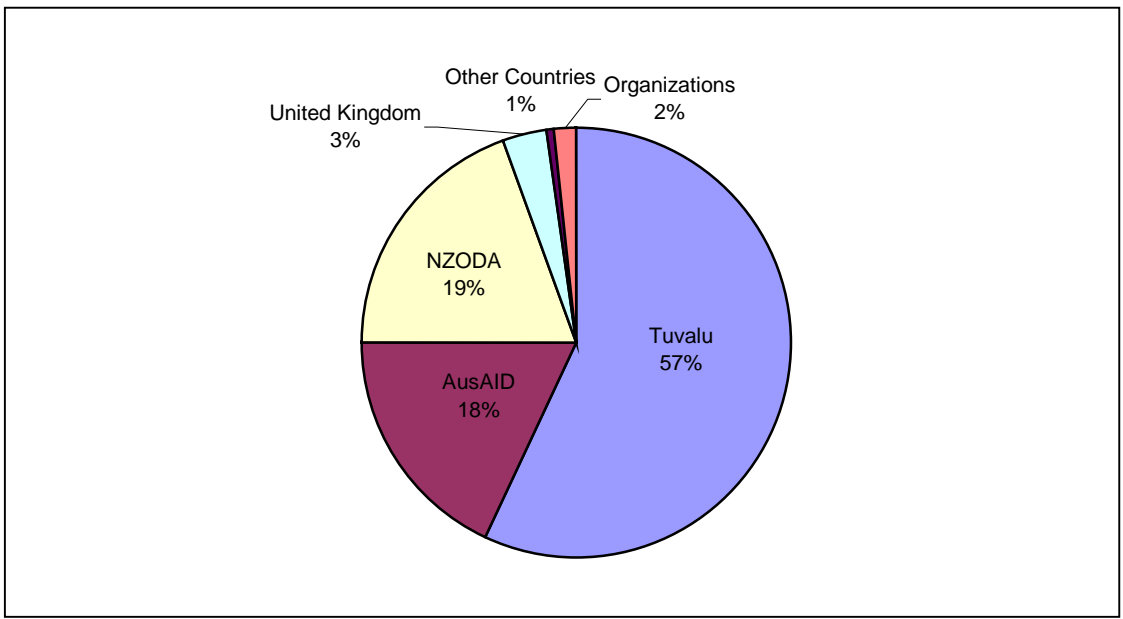
Graph 5.11 shows the number of students studying at the mentioned countries. The year 2004 marks the beginning of scholarship students to study Foundation courses at the USP centre in Tuvalu. (Refer to Table 5.6).

Graph 5.11: Country of study by year



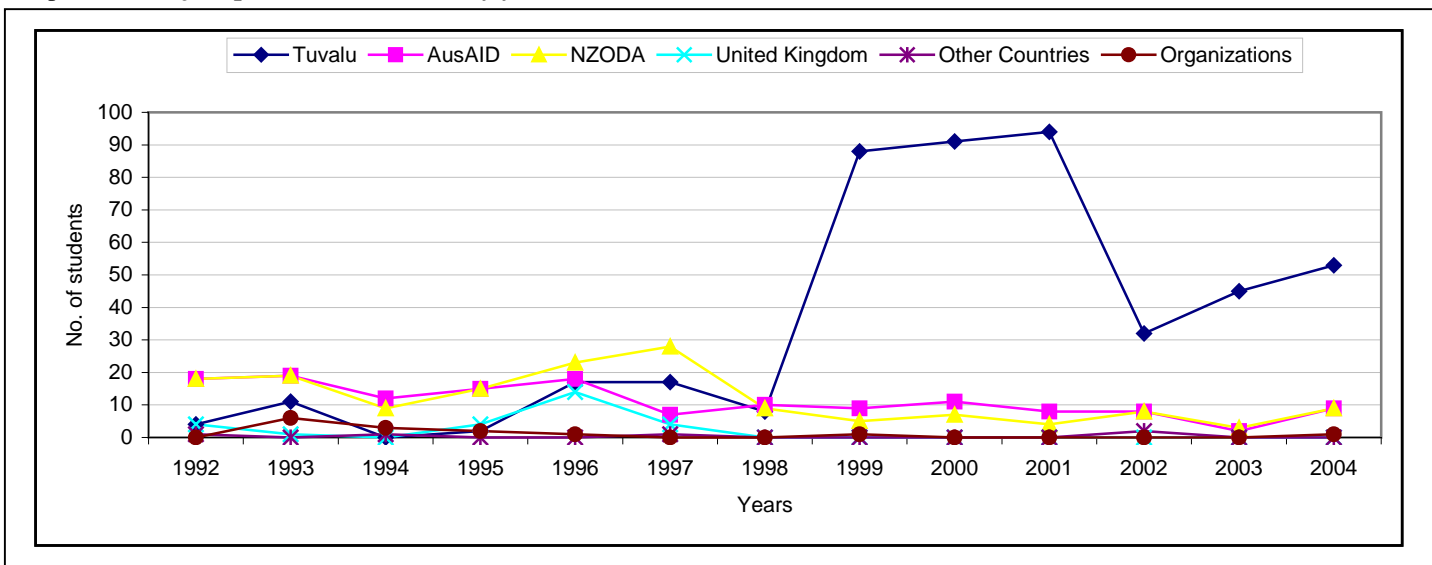
In Figure 5.12, from the aggregate total of 811 awards, the government of Tuvalu had funded the highest number of students, followed by our traditional sponsors New Zealand and Australia with 19% and 18% respectively. (Refer to Table 5.7).

Figure 5.12: Aggregate scholarships by sponsors 1992-2004



Graph 7.15 presents that between 1992 and 2004, sponsorship of students by various countries and organizations is decreasing while the government of Tuvalu on the other hand is increasing its funding on overseas training. (Refer to Table 5.7).

Graph 5.13: Major sponsors of students by year.

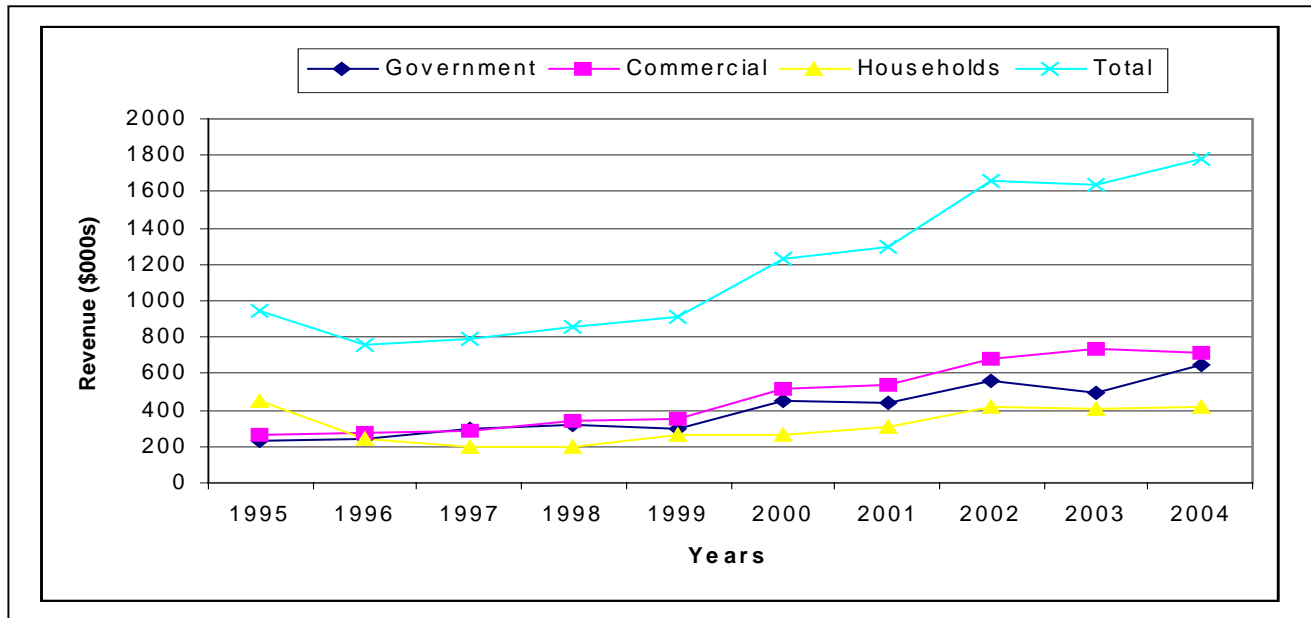


6. ELECTRICITY

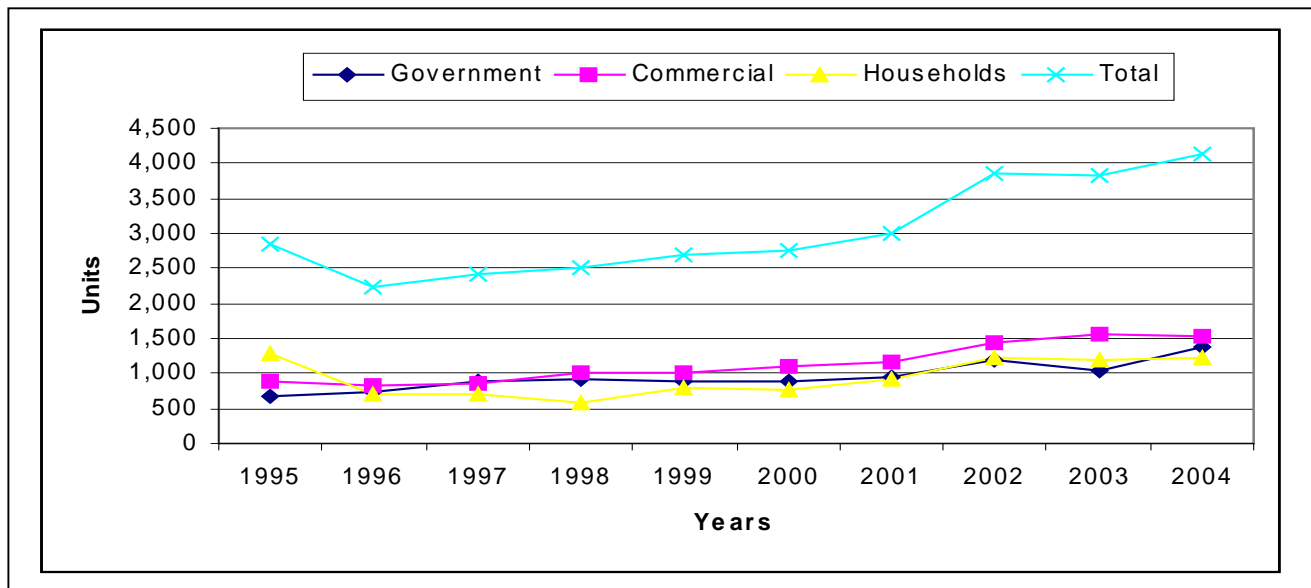
This section looks at the amount of electricity consumed and the amount of revenue derived from its use.

Graphs 6.1 and 6.2 shows that the total consumption of electricity increases throughout the years except for the year 1996 where it dropped. This drop may be attributed to either that a number of households had their power disconnected or that the receipts from the households were under reported.

Graph 6.1: Revenue (in \$000s) received from consumers by year.



Graph 6.2: Units (in 000s) used by consumers by year.



APPENDIX

Table 1.1 Tuvalu Consumers Price Index by quarters

Quarter	Tuvalu Consumers Price Index (Sept_2003 = 1000)	Annual Inflation Rate	Quarterly % Change	Annual Average % Change
Mar-00	896.8	5.1	1.2	3.6
Jun-00	903.3	5.3	0.7	4.5
Sep-00	896.3	3.9	-0.8	4.9
Dec-00	897.8	1.3	0.2	3.9
Mar-01	880.3	-1.8	-1.9	2.2
Jun-01	898.5	-0.5	2.1	0.7
Sep-01	930.9	3.9	3.6	0.7
Dec-01	939.4	4.6	0.9	1.5
Mar-02	946.0	7.5	0.7	3.9
Jun-02	987.3	9.9	4.4	6.5
Sep-02	960.5	3.2	-2.7	6.3
Dec-02	939.6	0.02	-2.2	5.1
Mar-03	960.1	1.5	2.2	3.6
Jun-03	999.3	1.2	4.1	1.5
Sep-03	1000.0	4.1	0.1	1.7
Dec-03	1002.2	6.7	0.2	3.4
Mar-04	1009.2	5.1	0.7	4.3
Jun-04	1015.4	1.6	0.6	4.4
Sep-04	1023.7	2.4	0.8	3.9
Dec-04	1023.8	2.2	0.004	2.8

Table 1.2 Quarterly index of sub-groups

Quarter	Food	Alcohol & Tobacco	Clothing & Textiles	Transport	Housing	Miscellaneous	ALL ITEMS
Mar-00	859.8	1010.1	850.7	926.9	787.7	1117.0	896.8
Jun-00	858.2	1011.8	913.4	926.9	787.7	1146.9	903.3
Sep-00	832.0	1008.8	871.8	977.2	792.6	1165.7	896.3
Dec-00	834.2	1011.8	871.8	977.2	792.6	1166.5	897.8
Mar-01	844.9	1039.8	729.8	967.3	792.6	1018.4	880.3
Jun-01	874.7	1039.8	817.2	967.3	792.6	1002.2	898.5
Sep-01	914.8	1049.2	823.8	1043.3	807.3	1009.4	930.9
Dec-01	928.3	1049.2	845.4	1043.3	809.1	1013.0	939.4
Mar-02	916.3	1049.2	825.2	1043.3	807.3	1144.7	946.0
Jun-02	962.6	993.4	1057.9	1001.5	990.7	1108.9	987.3
Sep-02	912.6	1007.4	1004.0	1002.2	988.3	1103.2	960.5
Dec-02	909.2	991.6	910.7	981.3	1004.1	1001.6	939.6
Mar-03	964.8	997.8	913.8	899.5	982.4	1048.6	960.1
Jun-03	1003.6	993.0	992.6	999.4	998.2	1068.7	999.3
Sep-03	1000.0	1000.0	1000.0	1000.0	1000.0	1000.0	1000.0
Dec-03	1004.5	1000.0	1014.1	1000.8	996.5	1005.5	1002.2
Mar-04	1016.1	1002.4	1003.1	1005.9	998.1	1017.4	1009.2
Jun-04	1019.9	1055.1	998.0	988.7	1007.8	1008.6	1015.4
Sep-04	1023.2	1048.0	999.1	1017.7	1008.4	1034.1	1023.7
Dec-04	1026.9	1058.4	989.7	1001.8	1008.9	1035.7	1023.8

Table 2.1 Resident arrivals by quarter and year by sex

Quarter	1998	1999	2000	2001			2002			2003			2004		
	T	T	T	M	F	T	M	F	T	M	F	T	M	F	T
First	354	538	495	297	164	461	342	171	513	373	271	644	393	256	649
Second	345	370	1067	323	235	558	317	192	509	406	157	563	363	178	541
Third	537	336	529	293	153	446	357	217	574	530	242	772	358	169	527
Fourth	797	755	954	663	461	1124	691	526	1217	509	347	856	512	303	815
Total	2033	1999	3045	1576	1013	2589	1707	1106	2813	1818	1017	2835	1626	906	2532

Table 2.2 Resident arrivals by quarter/year, age group and resident status by sex

Quarter/ Year	Total			Age Group															Resident Status								
				0 - 14 yrs			15 - 24 yrs			25 - 34yrs			35 - 44yrs			45 - 54yrs			55+yrs			Returning			Intending		
	M	F	Tot	M	F	T	M	F	T	M	F	T	M	F	T	M	F	T	M	F	T	M	F	T			
Q1/02	342	171	513	47	30	77	41	28	69	87	36	123	90	36	126	49	29	78	28	12	40	336	168	504	6	3	9
Q2/02	317	192	509	40	36	76	42	34	76	76	32	108	69	36	105	64	36	100	26	18	44	307	181	488	10	11	21
Q3/02	357	217	574	47	55	102	49	35	84	100	47	147	91	46	137	50	19	69	20	15	35	348	208	556	9	9	18
Q4/02	691	526	1217	130	122	252	183	179	362	129	76	205	136	65	201	73	53	126	40	31	71	677	516	1193	14	10	24
Q1/03	373	271	644	72	77	149	47	32	79	97	49	146	86	53	139	39	31	70	32	29	61	362	262	624	11	9	20
Q2/03	406	157	563	42	32	74	74	18	92	120	37	157	96	35	131	58	23	81	16	12	28	379	147	526	27	10	37
Q3/03	530	242	772	51	39	90	87	46	133	153	47	200	122	54	176	79	35	114	38	21	59	497	221	718	33	21	54
Q4/03	509	347	856	77	77	154	129	129	258	108	44	152	117	52	169	61	27	88	17	18	35	487	332	819	22	15	37
Q1/04	393	256	649	62	67	129	76	50	126	94	51	145	70	38	108	64	25	89	27	25	52	349	237	586	44	19	63
Q2/04	363	178	541	29	37	66	47	22	69	73	38	111	111	40	151	74	29	103	29	12	41	343	167	510	20	11	31
Q3/04	358	169	527	36	31	67	46	24	70	102	44	146	91	38	129	59	23	82	24	9	33	335	159	494	23	10	33
Q4/04	512	303	815	78	67	145	115	101	216	133	50	183	114	47	161	43	21	64	29	17	46	496	292	788	16	11	27

Table 2.3 Resident arrivals by month, age groups and resident status by sex - 2004

Months	Total			Age Group												Resident Status					
				0 - 14yrs		15 - 24yrs		25 - 34yrs		35 - 44yrs		45 - 54yrs		55+yrs		Returning			Intending		
	M	F	T	M	F	M	F	M	F	M	F	M	F	M	F	T	M	F	T		
Jan	160	127	287	32	38	35	26	30	21	21	22	30	14	12	6	139	117	256	21	10	31
Feb	96	54	150	12	13	15	8	29	16	19	9	15	4	6	4	82	47	129	14	7	21
Mar	137	75	212	18	16	26	16	35	14	30	7	19	7	9	15	128	73	201	9	2	11
Apr	109	56	165	4	11	12	5	21	17	38	8	23	11	11	4	102	52	154	7	4	11
May	151	74	225	16	20	21	8	30	12	47	18	27	12	10	4	142	70	212	9	4	13
Jun	103	48	151	9	6	14	9	22	9	26	14	24	6	8	4	99	45	144	4	3	7
Jul	87	33	120	10	3	9	6	22	9	25	9	12	4	9	2	76	31	107	11	2	13
Aug	136	65	201	15	10	16	8	38	17	35	16	23	10	9	4	135	62	197	1	3	4
Sep	135	71	206	11	18	21	10	42	18	31	13	24	9	6	3	124	66	190	11	5	16
Oct	90	42	132	5	8	6	8	33	11	30	11	7	1	9	3	86	40	126	4	2	6
Nov	125	80	205	16	16	19	26	38	19	33	9	12	8	7	2	120	75	195	5	5	10
Dec	297	181	478	57	43	90	67	62	20	51	27	24	12	13	12	290	177	467	7	4	11
Total	1626	906	2532	205	202	284	197	402	183	386	163	240	98	109	63	1523	855	2378	103	51	154

Table 2.4 Resident arrivals by month and mode of travel – 2004

Month	Fiji Air	Air Kiribati	Other Aircraft	Mv Manufofou	Mv Nivaga II	Other Vessels	Air			Sea			Total		
							M	F	T	M	F	T	M	F	T
January	172	7	0	0	108	0	105	74	179	55	53	108	160	127	287
February	125	10	0	0	0	15	81	54	135	15	0	15	96	54	150
March	138	0	0	74	0	0	97	41	138	40	34	74	137	75	212
April	164	0	1	0	0	0	109	56	165	0	0	0	109	56	165
May	108	0	37	0	70	10	99	46	145	52	28	80	151	74	225
June	134	0	0	17	0	0	92	42	134	11	6	17	103	48	151
July	120	0	0	0	0	0	87	33	120	0	0	0	87	33	120
August	142	0	0	0	59	0	96	46	142	40	19	59	136	65	201
September	147	0	0	35	0	24	101	46	147	34	25	59	135	71	206
October	114	0	0	0	7	11	78	36	114	12	6	18	90	42	132
November	205	0	0	0	0	0	125	80	205	0	0	0	125	80	205
December	205	0	0	0	0	273	136	69	205	161	112	273	297	181	478
Total	1774	17	38	126	244	333	1206	623	1829	420	283	703	1626	906	2532

Table 2.5 Resident arrivals by quarters/year and mode of travel

Month	Fiji Air	Air Kiribati	Other Aircraft	Mv Manufofou	Mv Nivaga II	Other Vessels	Air			Sea			Total		
							M	F	T	M	F	T	M	F	T
Q1/03	359	33	7	72	173	0	263	136	399	110	135	245	373	271	644
Q2/03	412	54	1	96	0	0	318	149	467	88	8	96	406	157	563
Q3/03	538	122	0	0	97	15	449	211	660	75	37	112	524	248	772
Q4/03	587	11	0	131	127	0	356	242	598	153	105	258	509	347	856
Total	1896	220	8	299	397	15	1386	738	2124	426	285	711	1812	1023	2835
Q1/04	435	17	0	74	108	15	283	169	452	110	87	197	393	256	649
Q2/04	406	0	38	17	70	10	300	144	444	63	34	97	363	178	541
Q3/04	409	0	0	35	59	24	284	125	409	74	44	118	358	169	527
Q4/04	524	0	0	0	7	284	339	185	524	173	118	291	512	303	815
Total	1774	17	38	126	244	333	1206	623	1829	420	283	703	1626	906	2532

Table 2.6 Resident departures by quarter and years

Quarter	1998	1999	2000	2001	2002	2003	2004
First	610	787	984	949	980	999	796
Second	435	337	489	701	513	558	460
Third	413	447	772	389	671	481	529
Fourth	441	664	681	738	536	579	551
Total	1899	2235	2926	2777	2700	2617	2336

Table 2.7 Resident departures by quarters/years, purpose of travel and mode of travel

Quarter/ Year	Purpose of Travel							Mode of Travel		Total
	Tourism	Family/Social	Commerce	Government	Transit	Education	Other	Air	Sea	
Q1/02	2	245	10	111	1	461	150	698	282	980
Q2/02	0	182	3	127	1	44	156	512	1	513
Q3/02	14	233	5	158	4	55	202	522	149	671
Q4/02	8	262	5	109	4	13	135	346	190	536
Q1/03	5	315	4	106	2	405	162	758	241	999
Q2/03	4	198	5	197	1	20	133	376	182	558
Q3/03	2	177	11	106	0	43	142	451	30	481
Q4/03	2	278	3	111	0	19	166	462	117	579
Q1/04	0	198	20	111	0	337	130	633	163	796
Q2/04	0	129	17	153	0	24	137	427	33	460
Q3/04	0	122	9	176	0	50	172	410	119	529
Q4/04	0	204	10	109	0	26	202	410	141	551

Table 2.8 Resident departures by month and purpose of travel – 2004

Month	Purpose of travel							Total
	Tourism	Family/Social	Commerce	Government	Transit	Education	Other	
January	0	113	14	33	0	209	43	412
February	0	59	2	39	0	109	43	252
March	0	26	4	39	0	19	44	132
April	0	26	0	37	0	7	48	118
May	0	48	14	83	0	12	63	220
June	0	55	3	33	0	5	26	122
July	0	43	5	59	0	20	61	188
August	0	27	3	64	0	15	62	171
September	0	52	1	53	0	15	49	170
October	0	52	3	50	0	18	73	196
November	0	91	5	48	0	4	92	240
December	0	61	2	11	0	4	37	115
Total	0	653	56	549	0	437	641	2336

Table 2.9 Resident departures by month and mode of travel – 2004

Month	Fiji Air	Air Kiribati	Other Aircraft	Mv Manufo'ulau	Mv Nivaga II	Other Vessels	Total Air	Total Sea	Total Departures
January	237	12	0	0	153	10	249	163	412
February	0	24	228	0	0	0	252	0	252
March	0	0	132	0	0	0	132	0	132
April	116	0	0	0	2	0	116	2	118
May	220	0	0	0	0	0	220	0	220
June	89	0	2	31	0	0	91	31	122
July	130	0	5	0	53	0	135	53	188
August	137	0	0	0	0	34	137	34	171
September	138	0	0	32	0	0	138	32	170
October	167	0	0	0	29	0	167	29	196
November	172	0	0	59	0	9	172	68	240
December	68	0	3	0	44	0	71	44	115
Total	1474	36	370	122	281	53	1880	456	2336

Table 2.10 Visitor arrivals by month and years by sex

Month	1999	2000	2001			2002			2003			2004		
	T	T	M	F	T	M	F	T	M	F	T	M	F	T
January	73	42	58	19	77	85	26	111	61	20	81	86	18	104
February	115	252	55	14	69	75	20	95	108	32	140	117	29	146
March	261	65	144	50	194	65	28	93	96	30	126	93	19	112
April	37	78	47	12	59	56	17	73	115	23	138	115	35	150
May	42	89	65	12	77	90	23	113	72	16	88	106	43	149
June	142	73	55	29	84	80	25	105	70	18	88	57	18	75
July	55	43	83	20	103	79	27	106	64	17	81	70	19	89
August	70	77	71	13	84	98	31	129	95	37	132	70	28	98
September	77	75	43	18	61	60	22	82	116	42	158	54	15	69
October	110	83	41	12	53	110	30	140	92	41	133	71	17	88
November	77	93	104	31	135	59	41	100	72	10	82	76	25	101
December	54	106	86	58	144	100	71	171	82	48	130	55	54	109
Total	1113	1076	852	288	1140	957	361	1318	1043	334	1377	970	320	1290

Table 2.11 Visitor arrivals by quarter/year and purpose of visit by sex

Quarter/Year	Holiday/ Vacation			Business/ Official			Friends/ Relatives			Transit/ stopover			Other Purpose			Total		
	M	F	T	M	F	T	M	F	T	M	F	T	M	F	T	M	F	T
Q1/03	23	13	36	98	24	122	95	34	129	10	2	12	39	9	48	265	82	347
Q2/03	18	7	25	27	15	42	142	22	164	11	2	13	59	11	70	257	57	314
Q3/03	39	20	59	54	34	88	133	30	163	12	6	18	37	6	43	275	96	371
Q4/03	42	22	64	47	44	91	107	19	126	27	9	36	23	5	28	246	99	345
Q1/04	27	5	32	215	33	248	15	19	34	12	6	18	27	3	30	296	66	362
Q2/04	23	16	39	135	31	166	35	45	80	8	3	11	1	1	2	202	96	298
Q3/04	25	16	41	216	58	274	25	18	43	7	3	10	5	1	6	278	96	374
Q4/04	36	16	52	134	32	166	11	7	18	9	6	15	4	1	5	194	62	256

Table 2.12 Visitor arrivals by month and purpose of visit by sex – 2004

Month	Holiday/ Vacation			Business/ Official			Friends/ Relatives			Transit/ stopover			Other			Total		
	M	F	T	M	F	T	M	F	T	M	F	T	M	F	T	M	F	T
January	9	2	11	54	2	56	6	11	17	1	0	1	16	3	19	86	18	104
February	8	1	9	90	20	110	3	3	6	9	5	14	7	0	7	117	29	146
March	10	2	12	71	11	82	6	5	11	2	1	3	4	0	4	93	19	112
April	11	12	23	92	20	112	10	2	12	1	1	2	1	0	1	115	35	150
May	6	3	9	84	28	112	7	9	16	6	2	8	3	1	4	106	43	149
June	8	1	9	40	10	50	8	7	15	0	0	0	1	0	1	57	18	75
July	7	1	8	52	12	64	4	2	6	6	4	10	1	0	1	70	19	89
August	23	9	32	42	16	58	4	3	7	0	0	0	1	0	1	70	28	98
September	6	6	12	40	4	44	3	2	5	3	2	5	2	1	3	54	15	69
October	7	6	13	58	9	67	2	2	4	3	0	3	1	0	1	71	17	88
November	9	5	14	61	17	78	2	1	3	4	2	6	0	0	0	76	25	101
December	7	5	12	16	5	21	31	42	73	1	1	2	0	1	1	55	54	109
Total	111	53	164	700	154	854	86	89	175	36	18	54	37	6	43	970	320	1290

Table 2.13 Visitor arrivals by country and purpose of visit by sex – 2004

Country	Holiday/ Vacation			Business/ Official			Friends/ Relatives			Transit/ stopover			Other			Total		
	M	F	T	M	F	T	M	F	T	M	F	T	M	F	T	M	F	T
Australia	5	1	6	117	30	147	2	14	16	5	0	5	6	4	10	135	49	184
New Zealand	9	1	10	84	20	104	11	12	23	4	1	5	5	0	5	113	34	147
Fiji	7	5	12	190	45	235	34	26	60	5	6	11	13	1	14	249	83	332
Kiribati	2	2	4	7	4	11	15	20	35	1	2	3	1	0	1	26	28	54
Other Pacific	1	1	2	65	16	81	9	8	17	0	0	0	0	0	0	75	25	100
USA	11	6	17	23	6	29	5	7	12	5	4	9	1	0	1	45	23	68
Canada	4	1	5	3	3	6	0	0	0	0	0	0	0	0	0	7	4	11
Great Britain	10	4	14	29	5	34	0	0	0	0	0	0	0	1	1	39	10	49
Germany	7	2	9	6	3	9	0	0	0	5	1	6	1	0	1	19	6	25
France	2	1	3	5	1	6	0	0	0	0	0	0	0	0	0	7	2	9
Other Europe	9	1	10	9	4	13	0	0	0	2	0	2	0	0	0	20	5	25
Japan	32	17	49	68	6	74	2	0	2	7	3	10	2	0	2	111	26	137
Other Asia	9	10	19	53	6	59	3	0	3	2	0	2	6	0	6	73	16	89
Other Countries	3	1	4	41	5	46	5	2	7	0	1	1	2	0	2	51	9	60
Total	111	53	164	700	154	854	86	89	175	36	18	54	37	6	43	970	320	1290

Table 2.14 Visitor arrivals by month and mode of travel by sex – 2004

Month	Fiji Air	Air Kiribati	Other Aircraft	Mv Manufofau	Mv Nivaga II	Other Vessels	Air			Sea			Total		
							M	F	T	M	F	T	M	F	T
January	88	6	0	0	10	0	80	14	94	6	4	10	86	18	104
February	127	8	0	0	0	11	109	26	135	8	3	11	117	29	146
March	100	0	0	12	0	0	86	14	100	7	5	12	93	19	112
April	143	0	7	0	0	0	115	35	150	0	0	0	115	35	150
May	99	0	37	0	11	2	101	35	136	5	8	13	106	43	149
June	63	0	0	11	0	1	49	14	63	8	4	12	57	18	75
July	77	0	0	0	0	12	62	15	77	8	4	12	70	19	89
August	93	0	0	0	3	2	67	26	93	3	2	5	70	28	98
September	59	0	0	2	0	8	47	12	59	7	3	10	54	15	69
October	79	0	0	0	1	8	66	13	79	5	4	9	71	17	88
November	94	0	0	0	0	7	70	24	94	6	1	7	76	25	101
December	47	0	0	0	0	62	29	18	47	26	36	62	55	54	109
Total	1069	14	44	25	25	113	881	246	1127	89	74	163	970	320	1290

Table 2.15 Visitor departures by quarter and years

Quarter	2001	2002	2003	2004
First	357	307	542	420
Second	222	263	362	430
Third	191	322	275	314
Fourth	290	273	372	296
Total	1060	1165	1551	1460

Table 2.16 Visitor departures by month and countries – 2004

Month	Australia	New Zealand	Fiji	Other Pacific	USA	Canada	UK	Germany	France	Other Europe	Japan	Other Asia	Other Countries	Total
January	18	18	53	16	1	2	2	1	2	11	15	11	16	166
February	10	17	34	9	9	0	12	1	0	1	4	5	20	122
March	26	13	26	23	14	0	2	2	0	0	10	3	13	132
April	27	15	30	10	2	1	4	2	0	5	16	19	10	141
May	23	21	65	16	4	7	11	4	0	3	15	32	6	207
June	10	15	26	2	5	2	4	5	0	1	2	4	6	82
July	18	15	26	11	7	1	2	2	0	2	8	13	9	114
August	21	12	26	7	10	0	4	2	0	4	14	8	7	115
September	15	14	20	4	3	1	3	0	0	0	20	1	4	85
October	15	11	35	1	6	1	2	3	0	2	12	3	11	102
November	16	22	17	12	8	1	7	5	0	2	7	9	20	126
December	7	11	23	3	1	0	3	0	3	1	11	2	3	68
Total	206	184	381	114	70	16	56	27	5	32	134	110	125	1460

Table 2.17 Visitor departures by month and mode of transport – 2004

Month	Fiji Air	Air Kiribati	Other Aircraft	Mv Manufo'ou	Mv Nivaga II	Other Vessels	Total Air	Total Sea	Total departures
January	131	5	0	0	30	0	136	30	166
February	0	4	118	0	0	0	122	0	122
March	23	0	109	0	0	0	132	0	132
April	140	0	0	0	1	0	140	1	141
May	189	0	18	0	0	0	207	0	207
June	66	0	0	10	2	4	66	16	82
July	96	0	9	0	7	2	105	9	114
August	109	0	0	0	0	6	109	6	115
September	81	0	0	3	0	1	81	4	85
October	88	0	0	0	6	8	88	14	102
November	101	0	0	5	0	20	101	25	126
December	60	0	3	0	5	0	63	5	68
Total	1084	9	257	18	51	41	1350	110	1460

Table 2.18 Visitor average duration of stay in days by year and countries

Year	Australia	New Zealand	Fiji	Other Pacific Is.	USA	Canada	UK	Germany	France	Other Europe	Japan	Other Asia	Other Countries
2002	25	42	62	98	27	40	51	9	2	11	19	38	19
2003	25	24	75	182	26	16	25	4	12	4	22	42	24
2004	36	66	65	86	48	26	15	8	18	20	14	40	87

Table 3.1 Births by quarter/years and islands

Quarter/ Year	Funafuti	Nanumea	Nanumaga	Niutao	Nui	Vaitupu	Nukufetau	Nukulaelae	Niulakita	Total
Q1/99	44	5	1	0	1	5	5	1	0	62
Q2/99	32	2	2	2	1	7	2	0	0	48
Q3/99	48	2	0	2	3	5	4	0	0	64
Q4/99	36	2	3	3	2	6	3	1	1	57
Q1/00	26	4	3	5	3	1	7	0	0	49
Q2/00	52	5	5	6	0	3	3	1	0	75
Q3/00	50	1	3	1	0	3	3	0	0	61
Q4/00	34	1	4	3	0	3	1	0	0	46
Q1/01	39	2	5	3	0	5	2	2	0	58
Q2/01	36	3	5	2	0	1	3	1	0	51
Q3/01	39	4	4	2	0	1	0	0	0	50
Q4/01	28	1	1	5	0	0	3	0	0	38
Q1/02	26	1	1	2	2	4	2	0	0	38
Q2/02	37	2	2	0	0	2	2	0	0	45
Q3/02	32	2	1	2	1	0	3	1	0	42
Q4/02	23	1	2	0	0	1	3	1	0	31
Q1/03	37	1	0	1	0	3	1	2	0	45
Q2/03	44	2	4	0	1	2	0	0	0	53
Q3/03	29	2	1	2	2	2	2	2	0	42
Q4/03	33	1	2	2	1	5	1	0	0	45
Q1/04	26	4	6	1	0	3	2	2	0	44
Q2/04	41	2	1	4	1	3	0	0	0	52
Q3/04	29	1	4	1	3	6	3	0	0	47
Q4/04	38	2	1	0	0	6	0	0	0	47

Table 3.2 Monthly births by islands and sex - 2004

Months	Funafuti		Nanumea		Nanumaga		Niutao		Nui		Vaitupu		Nukufetau		Nukulaelae		Total		
	M	F	M	F	M	F	M	F	M	F	M	F	M	F	M	F	M	F	T
January	1	3	0	0	3	0	0	1	0	0	1	0	1	0	0	0	6	4	10
February	3	3	0	1	0	1	0	0	0	0	0	0	0	1	0	0	3	6	9
March	7	8	1	1	1	1	0	0	0	0	0	1	0	0	1	1	10	12	22
April	11	5	1	0	0	0	1	0	0	0	0	1	0	0	0	0	13	6	19
May	3	6	0	0	0	0	1	2	0	0	0	2	0	0	0	0	4	10	14
June	5	11	1	1	1	0	0	0	1	0	1	0	0	0	0	0	9	12	21
July	5	4	0	1	0	3	0	0	1	1	1	3	0	0	0	0	7	12	19
August	6	5	0	0	0	0	0	0	1	0	0	2	0	0	0	0	7	7	14
September	4	5	0	0	1	0	0	1	0	0	0	0	3	0	0	0	8	6	14
October	9	6	0	0	0	0	0	0	0	0	2	2	0	0	0	0	11	8	19
November	6	4	0	1	0	0	0	0	0	0	0	0	0	0	0	0	6	5	11
December	8	6	1	0	1	0	0	0	0	0	2	0	0	0	0	0	12	6	18
Total	68	66	4	5	7	5	2	4	3	1	7	11	4	1	1	1	96	94	190

Table 3.3 Mothers age groups by islands and marital status – 2004

Age-groups	Funafuti		Nanumea		Nanumaga		Niutao		Nui		Vaitupu		Nukufetau		Nukulaelae		Total		
	M	S	M	S	M	S	M	S	M	S	M	S	M	S	M	S	M	S	T
15-19	5	6	0	0	0	0	0	0	0	0	1	0	0	0	0	0	6	6	12
20-24	39	8	3	0	3	0	2	0	1	1	2	1	2	0	0	0	52	10	62
25-29	36	0	5	1	3	0	1	0	1	0	5	0	0	0	0	0	51	1	52
30-34	17	0	0	0	2	0	2	0	0	0	4	0	1	0	2	0	28	0	28
35-39	17	1	0	0	1	0	1	0	0	0	3	0	2	0	0	0	24	1	25
40-44	4	0	0	0	3	0	0	0	1	0	2	0	0	0	0	0	10	0	10
45-49	1	0	0	0	0	0	0	0	0	0	0	0	0	0	0	0	1	0	1
Total	119	15	8	1	12	0	6	0	3	1	17	1	5	0	2	0	172	18	190

Table 3.4 Deaths by quarters / years and island of occurrence

Quarter/ Year	Funafuti	Nanumea	Nanumaga	Niutao	Nui	Vaitupu	Nukufetau	Nukulaelae	Niulakita	Total
Q1/99	5	4	0	2	0	4	2	2	0	19
Q2/99	9	0	2	3	2	5	4	1	0	26
Q3/99	6	1	2	3	1	4	3	2	0	22
Q4/99	1	3	2	3	4	2	0	1	1	17
Q1/00	7	3	2	0	2	21	4	3	0	42
Q2/00	7	3	2	0	4	1	0	3	0	20
Q3/00	8	5	2	3	0	4	0	0	0	22
Q4/00	11	0	1	5	2	4	2	0	0	25
Q1/01	5	2	5	4	2	2	2	3	0	25
Q2/01	13	3	2	3	2	3	0	2	0	28
Q3/01	3	5	0	4	0	0	1	1	0	14
Q4/01	10	1	4	1	2	1	0	0	0	19
Q1/02	7	6	4	4	0	3	1	0	0	25
Q2/02	11	1	2	3	0	5	6	0	0	28
Q3/02	7	1	2	1	3	3	4	0	0	21
Q4/02	7	1	1	1	1	1	0	1	0	13
Q1/03	6	3	2	1	4	0	3	1	0	20
Q2/03	7	4	1	1	0	1	1	0	0	15
Q3/03	10	1	0	4	0	4	0	0	0	19
Q4/03	11	1	5	4	3	1	2	2	0	29
Q1/04	10	4	1	1	2	1	0	2	0	21
Q2/04	17	3	0	2	1	4	3	0	0	30
Q3/04	12	1	1	0	2	3	1	0	0	20
Q4/04	6	3	4	1	0	4	0	0	0	18

Table 3.5 Monthly deaths by island of occurrence and sex – 2004

Months	Funafuti		Nanumea		Nanumaga		Niutao		Nui		Vaitupu		Nukufetau		Nukulaelae		Total		
	M	F	M	F	M	F	M	F	M	F	M	F	M	F	M	F	M	F	T
January	2	0	0	2	1	0	0	0	0	0	0	0	0	0	2	0	5	2	7
February	3	2	0	2	0	0	1	0	1	0	1	0	0	0	0	0	6	4	10
March	2	1	0	0	0	0	0	0	0	1	0	0	0	0	0	0	2	2	4
April	3	4	1	0	0	0	0	2	0	0	2	2	0	1	0	0	6	9	15
May	2	5	1	0	0	0	0	0	0	0	0	0	1	1	0	0	4	6	10
June	1	2	0	1	0	0	0	0	1	0	0	0	0	0	0	0	2	3	5
July	3	0	0	1	0	0	0	0	0	0	0	2	0	0	0	0	3	3	6
August	0	3	0	0	1	0	0	0	0	0	0	0	1	0	0	0	2	3	5
September	2	4	0	0	0	0	0	0	0	2	0	1	0	0	0	0	2	7	9
October	0	1	1	2	0	2	0	0	0	0	1	1	0	0	0	0	2	6	8
November	1	0	0	0	0	0	1	0	0	0	1	1	0	0	0	0	3	1	4
December	2	2	0	0	0	2	0	0	0	0	0	0	0	0	0	0	2	4	6
Total	21	24	3	8	2	4	2	2	2	3	5	7	2	2	2	0	39	50	89

Table 3.6 Monthly deaths by home island and sex – 2004

Months	Funafuti		Nanumea		Nanumaga		Niutao		Nui		Vaitupu		Nukufetau		Nukulaelae		Total		
	M	F	M	F	M	F	M	F	M	F	M	F	M	F	M	F	M	F	T
January	0	0	0	2	1	0	0	0	1	0	0	0	1	0	2	0	5	2	7
February	0	2	0	2	0	0	1	0	1	0	2	0	2	0	0	0	6	4	10
March	1	0	0	0	0	0	0	0	0	1	0	0	1	1	0	0	2	2	4
April	1	3	1	0	0	0	1	2	0	0	2	2	1	2	0	0	6	9	15
May	1	1	1	0	0	0	0	2	0	0	0	1	2	0	0	2	4	6	10
June	0	0	0	1	0	2	0	0	1	0	0	0	1	0	0	0	2	3	5
July	1	0	0	1	0	0	1	0	1	0	0	2	0	0	0	0	3	3	6
August	0	0	0	0	1	0	0	0	0	1	0	0	1	1	0	1	2	3	5
September	0	1	0	1	1	0	1	0	0	2	0	2	0	0	0	1	2	7	9
October	0	0	1	2	0	2	0	0	0	0	1	1	0	0	0	1	2	6	8
November	0	0	0	0	0	0	1	0	0	0	2	1	0	0	0	0	3	1	4
December	0	1	1	0	1	3	0	0	0	0	0	0	0	0	0	0	2	4	6
Total	4	8	4	9	4	7	5	4	4	4	7	9	9	4	2	5	39	50	89

Table 3.7 Deaths by age groups and island of occurrence by sex – 2004

Age Group	Funafuti		Nanumea		Nanumaga		Niutao		Nui		Vaitupu		Nukufetau		Nukulaelae		Total		
	M	F	M	F	M	F	M	F	M	F	M	F	M	F	M	F	M	F	T
< 1yr	1	3	0	0	0	0	1	0	0	0	0	0	0	0	0	0	2	3	5
1-4	2	0	0	0	0	0	0	0	0	0	0	1	0	0	0	0	2	1	3
5-9	0	0	0	0	0	0	0	0	0	0	0	0	0	0	0	0	0	0	0
10-14	0	0	0	0	0	0	0	0	0	0	0	0	0	0	0	0	0	0	0
15-19	1	0	0	0	0	0	0	0	0	0	0	0	0	1	0	0	1	1	2
20-24	0	1	0	0	0	0	0	0	0	0	1	0	0	0	0	0	1	1	2
25-29	1	1	0	0	0	0	0	0	0	0	0	0	0	0	0	0	1	1	2
30-34	1	0	0	0	0	0	0	0	0	0	0	0	0	0	0	0	1	0	1
35-39	0	0	1	0	0	0	1	0	0	0	0	0	0	0	0	0	2	0	2
40-44	4	0	0	0	0	0	0	0	1	0	0	0	0	0	0	0	5	0	5
45-49	0	3	0	0	0	0	0	0	0	0	0	1	0	0	0	0	0	4	4
50-54	2	1	0	1	1	0	0	0	0	0	0	0	0	0	0	0	3	2	5
55-59	1	4	1	1	0	0	0	0	0	0	0	0	0	0	0	0	2	5	7
60-64	2	1	0	1	1	1	0	0	0	0	2	0	0	0	0	0	5	3	8
65-69	1	1	0	0	0	1	0	0	0	1	0	2	0	0	1	0	2	5	7
70-74	1	2	1	1	0	1	0	0	1	0	2	1	1	1	0	0	6	6	12
75-79	1	5	0	1	0	1	0	0	0	0	0	0	1	0	0	0	2	7	9
80-84	2	0	0	1	0	0	0	2	0	2	0	0	0	0	0	0	2	5	7
85-89	1	2	0	2	0	0	0	0	0	0	0	1	0	0	1	0	2	5	7
>89	0	0	0	0	0	0	0	0	0	0	0	1	0	0	0	0	0	1	1
Total	21	24	3	8	2	4	2	2	2	3	5	7	2	2	2	0	39	50	89

Table 3.8 Deaths by age groups and Home Island by sex – 2004

Age Group	Funafuti		Nanumea		Nanumaga		Niutao		Nui		Vaitupu		Nukufetau		Nukulaelae		Total			
	M	F	M	F	M	F	M	F	M	F	M	F	M	F	M	F	M	F	T	
< 1yr	0	2	0	0	0	1	2	0	0	0	0	0	0	0	0	0	2	3	5	
1-4	0	0	0	0	0	0	0	0	0	0	0	1	2	0	0	0	2	1	3	
5-9	0	0	0	0	0	0	0	0	0	0	0	0	0	0	0	0	0	0	0	
10-14	0	0	0	0	0	0	0	0	0	0	0	0	0	0	0	0	0	0	0	
15-19	0	0	0	0	0	0	0	0	0	0	0	0	1	0	0	1	1	1	2	
20-24	0	0	0	0	0	0	0	0	0	0	1	1	0	0	0	0	1	1	2	
25-29	0	0	0	0	0	0	1	0	0	0	0	0	0	1	0	0	1	1	2	
30-34	0	0	0	0	1	0	0	0	0	0	0	0	0	0	0	0	1	0	1	
35-39	0	0	1	0	0	0	1	0	0	0	0	0	0	0	0	0	2	0	2	
40-44	0	0	0	0	1	0	0	0	2	0	1	0	1	0	0	0	5	0	5	
45-49	0	0	0	0	0	1	0	0	0	0	0	2	0	0	0	1	0	4	4	
50-54	0	1	0	1	1	0	0	0	0	0	1	0	1	0	0	0	3	2	5	
55-59	0	1	1	1	0	0	1	1	0	0	0	0	0	1	0	1	2	5	7	
60-64	1	0	0	2	1	1	0	0	1	0	2	0	0	0	0	0	5	3	8	
65-69	1	0	0	0	0	1	0	0	0	1	0	2	0	0	1	1	2	5	7	
70-74	0	1	1	1	0	1	0	0	1	0	2	1	2	1	0	1	6	6	12	
75-79	0	2	1	1	0	2	0	1	0	1	0	0	2	0	0	0	2	7	9	
80-84	1	0	1	1	0	0	0	2	0	2	0	0	0	0	0	0	2	5	7	
85-89	1	1	0	2	0	0	0	0	0	0	0	1	0	1	1	0	2	5	7	
>89	0	0	0	0	0	0	0	0	0	0	0	1	0	0	0	0	0	1	1	
Total	4	8	4	9	4	7	5	4	4	4	4	7	9	9	4	2	5	39	50	89

Table 4.1 Resident population by quarter and years

Quarter	2002	2003	2004
First	na	9379	9905
Second	na	9422	10008
Third	na	9736	10033
Fourth	9709	10029	10326
Growth rate	na	3.2%	2.9%

Table 4.2 Resident migration by years

	1999	2000	2001	2002	2003	2004
Miration In	1999	3045	2589	2813	2835	2532
Migration Out	2235	2926	2777	2700	2617	2336
Net migration	-236	119	-188	113	218	196
Net migration rate	-2.3%	1.2%	-1.9%	1.2%	2.2%	1.9%

Table 4.3 Resident births and deaths by years

	1999	2000	2001	2002	2003	2004
Births	231	231	197	156	185	190
Deaths	84	109	86	87	83	89
Natural increase	147	122	111	69	102	101
Rate of Natural increase	1.5%	1.3%	1.1%	0.7%	1.0%	2.1%

Table 5.1 Primary school enrolments by year and sex.

Year	Male	Female	Total	Teachers	Pupils/Teachers Ratio
1991	781	702	1483	66	22.5
1992	731	685	1416	62	22.8
1993	854	794	1648	73	22.6
1994	879	767	1646	72	22.9
1995	940	769	1709	60	28.5
1996	938	747	1685	59	28.6
1997	957	786	1743	78	22.3
1998	975	846	1821	90	20.2
1999	955	784	1739	92	18.9
2000	1055	885	1940	98	19.8
2001	945	853	1798	98	18.3
2002	846	795	1641	99	16.6
2003	945	914	1859	99	18.8
2004	1035	975	2010	84	23.9

Table 5.2 Secondary school enrolments by year and sex

Motufoua Secondary School						Fetuvalu High School					
Year	male	female	Total	Teachers	S/T Ratio	Year	male	female	Total	Teachers	S/T Ratio
1991	122	196	318	19	16.7	1991	132	102	234	5	46.8
1992	105	148	253	19	13.3	1992	132	102	234	14	16.7
1993	72	114	186	19	9.8	1993	110	83	193	16	12.1
1994	173	152	325	20	16.3	1994	128	157	285	13	21.9
1995	178	191	369	23	16.0	1995	107	103	210	11	19.1
1996	209	216	425	25	17.0	1996	86	107	193	9	21.4
1997	235	250	485	24	20.2	1997	55	80	135	10	13.5
1998	252	245	497	25	19.9	1998	95	170	265	11	24.1
1999	261	264	525	29	18.1	1999	No enrolment as the school was closed				
2000	269	244	513	30	17.1	2000					
2001	289	269	558	32	17.4	2001					
2002	234	224	458	37	12.4	2002					
2003	237	243	480	40	12.0	2003	44	55	99	8	12.4
2004	228	218	446	41	10.9	2004	102	81	183	11	16.6

Table 5.3 Fiji Junior Results by total and percentage

Year	Student Sat	Student Pass		Student Fail	
		Number	Percentage	Number	Percentage
1994	93	57	61	36	39
1995	127	55	43	72	57
1996	156	59	38	97	62
1997	221	52	24	169	76
1998	152	34	22	118	78
1999	229	57	25	172	75
2000	193	57	30	136	70
2001	183	24	13	159	87
2002	185	62	34	123	66
2003	161	85	53	76	47
2004	169	91	54	78	46
Fiji Junior Results (Fetuvalu High School)					
Year	Student Sat	Student Pass		Student Fail	
		Number	Percentage	Number	Percentage
1995	76	12	16	64	84
1996	53	7	13	46	87
1997	83	12	14	71	86
1998	123	10	8	113	92

Table 5.4 In-service and pre-service training by year and sex.

Year	In-service			Pre-service			Total		
	m	f	Total	m	f	Total	m	f	Total
1991	3	0	3	24	10	34	27	10	37
1992	5	1	6	18	21	39	23	22	45
1993	9	5	14	26	16	42	35	21	56
1994	9	1	10	6	9	15	15	10	25
1995	3	4	7	13	18	31	16	22	38
1996	16	5	21	22	30	52	38	35	73
1997	16	3	19	16	22	38	32	25	57
1998	18	4	22	3	2	5	21	6	27
1999	21	12	33	34	36	70	55	48	103
2000	20	10	30	32	47	79	52	57	109
2001	25	11	36	32	38	70	57	49	106
2002	13	6	19	13	18	31	26	24	50
2003	8	5	13	16	21	37	24	26	50
2004	18	15	33	19	20	39	37	35	72
Total	184	82	266	274	308	582	458	390	848

Table 5.5 Tuvalu scholarships by year and course of study

Course of study	1992	1993	1994	1995	1996	1997	1998	1999	2000	2001	2002	2003	2004	Total
Further Studies	29	20	5	15	34	24	0	0	16	9	1	3	27	183
Cadet	0	1	0	0	2	2	0	0	1	4	0	0	0	10
Certificate	5	13	0	4	3	5	1	17	4	14	4	3	0	73
Diploma	4	12	8	5	14	9	6	49	49	41	11	14	18	240
Degree	6	7	11	14	17	11	20	28	35	33	30	29	23	264
Post-graduate Certificate	0	0	0	0	0	0	0	0	1	0	0	0	0	1
Post-graduate Diploma	0	0	0	0	0	0	0	1	0	0	0	1	2	4
Master	1	3	1	0	1	5	0	8	3	5	4	0	2	33
PhD(Doctorate)	0	0	0	0	2	1	0	0	0	0	0	0	0	3
Total	45	56	25	38	73	57	27	103	109	106	50	50	72	811

Table 5.6 Overseas training by year and country of study

Country of Study	1992	1993	1994	1995	1996	1997	1998	1999	2000	2001	2002	2003	2004	Total
Fiji	26	33	19	26	48	42	18	53	32	58	30	36	34	455
New Zealand	10	7	2	4	7	8	2	7	34	22	14	12	8	137
Australia	7	8	0	3	3	0	3	8	14	9	5	1	5	66
Samoa	1	0	0	4	1	0	0	6	9	10	1	0	2	34
Tonga	0	0	0	0	5	0	0	20	5	0	0	0	0	30
Other Pacific Countries	0	4	2	1	8	6	4	3	2	0	0	0	0	30
Kiribati	0	0	0	0	0	0	0	5	12	7	0	0	0	24
Tuvalu	0	0	0	0	0	0	0	0	0	0	0	1	23	24
Other Countries	1	4	2	0	1	1	0	1	1	0	0	0	0	11
Total	45	56	25	38	73	57	27	103	109	106	50	50	72	811

Table 5.7 Overseas training by year and major sponsors.

Sponsors	1992	1993	1994	1995	1996	1997	1998	1999	2000	2001	2002	2003	2004	Total
Tuvalu	4	11	0	2	17	17	8	88	91	94	32	45	53	462
AusAID	18	19	12	15	18	7	10	9	11	8	8	2	9	146
NZODA	18	19	9	15	23	28	9	5	7	4	8	3	9	157
United Kingdom	4	1	0	4	14	4	0	0	0	0	0	0	0	27
Other Countries	1	0	1	0	0	1	0	0	0	0	2	0	0	5
Organizations	0	6	3	2	1	0	0	1	0	0	0	0	1	14
Total	45	56	25	38	73	57	27	103	109	106	50	50	72	811

Table 6.1 Electricity consumption by consumers and years with revenue and unit usage

Consumer	2000		2001		2002		2003		2004	
	Revenue (\$)	Units	Revenue (\$)	Units	Revenue (\$)	Units	Revenue (\$)	Units	Revenue (\$)	Units
Government	454,182	896,357	444,508	945,762	562,746	1,197,334	489,715	1,041,958	645,222	1,372,814
Commercial	517,335	1,100,725	541,681	1,152,515	675,976	1,438,250	738,589	1,571,481	713,946	1,519,036
Households	259,168	762,254	308,172	906,396	416,286	1,223,488	410,748	1,208,091	418,011	1,229,445
Total	1,230,685	2,759,336	1,294,361	3,004,673	1,655,008	3,859,072	1,639,052	3,821,530	1,777,178	4,121,295

Consumer	1995		1996		1997		1998		1999	
	Revenue (\$)	Units	Revenue (\$)	Units	Revenue (\$)	Units	Revenue (\$)	Units	Revenue (\$)	Units
Government	226,320	664,873	245,408	728,452	298,481	877,884	314,180	920,278	301,466	886,265
Commercial	267,179	885,811	277,815	817,104	290,453	850,396	341,379	1,004,056	348,376	1,024,728
Households	453,739	1,299,055	239,071	703,149	200,885	701,206	200,885	590,843	266,148	782,793
Total	947,238	2,849,739	762,294	2,248,705	789,819	2,429,486	856,444	2,515,177	915,990	2,693,786

Table 6.2 Electricity consumption by months and years with revenue and unit usage – 2001 & 2004

Month	2003						2004					
	Government		Commercial		Households		Government		Commercial		Households	
	Units	\$	Units	\$	Units	\$	Units	\$	Units	\$	Units	\$
January	82,071	38,573	113,789	53,480	91,668	31,167	85,388	40,132	116,727	54,861	101,856	34,631
February	90768	42661	131978	62029	97837	33265	72521	34084	98,318	46,209	79,124	26,902
March	86,821	40,805	140,789	66,170	99,959	33,986	86,264	40,544	128014	60,167	102,333	34,793
April	92,525	43,486	128,420	60,357	106,950	36,363	93,727	44,052	147246	69,206	114,264	38,850
May	93,096	43,755	120,680	56,719	104,463	35,517	110,481	51,926	124,717	58,617	92,182	31,342
June	79,786	37,499	120,432	56,603	98,562	33,511	118,175	55,542	136,627	64,215	101,403	34,477
July	67,075	31,525	143,680	67,529	88,515	30,095	110,982	52,162	150,226	70,606	100,622	34,211
August	78,368	36,832	126,637	59,519	91,007	30,942	162,195	76,232	118,533	55,710	100,903	34,307
September	89,084	41,869	125,151	58,820	98,446	33,471	144,034	67,696	112,937	53,080	110,796	37,671
October	87,998	41,359	134,738	63,326	109,645	37,279	132,308	62,185	103,781	48,777	94,324	32,070
November	91,231	42,878	130,106	61,149	101,913	34,650	130,510	61,340	134,293	63,118	114,240	38,842
December	103,135	48,473	155,081	72,888	119,126	40,502	126,229	59,328	147,617	69,380	117,398	39,915
Total	1,041,958	489,715	1,571,481	738,589	1,208,091	\$410,748	1,372,814	645,222	1,519,036	713,946	1,229,445	\$418,011

Month	2001						2002					
	Government		Commercial		Households		Government		Commercial		Households	
	Units	\$	Units	\$	Units	\$	Units	\$	Units	\$	Units	\$
January	57,508	27,029	83,204	39,106	69,563	23,651	94,806	44,559	124,085	58,320	92,875	31,578
February	54,494	25,612	89,754	42,184	71,060	24,160	86,679	40,739	79,428	37,331	118,524	40,298
March	76,354	35,886	83,708	39,343	62,751	21,335	74,530	35,029	123,260	57,932	85,849	29,189
April	73,040	34,329	86,176	40,503	67,986	23,115	100,219	47,103	114,536	53,832	98,956	33,645
May	84,541	39,734	90,725	42,641	78,763	26,779	99,676	46,848	122,796	57,714	106,432	36,487
June	67,112	31,543	67,454	31,703	62,747	21,334	86,737	40,766	107,911	50,718	91,185	31,003
July	96,612	45,408	93,607	43,995	78,850	26,809	99,352	46,695	120,321	56,551	135,152	45,952
August	90,365	42,472	111,927	52,606	78,557	26,709	93,615	43,999	131,144	61,638	106,413	36,180
September	111,792	52,542	123,954	58,258	99,974	33,991	106,868	50,228	152,415	71,635	99,217	33,734
October	69,001	32,430	93,126	43,769	66,570	22,634	97,312	45,737	125,473	58,972	96,211	32,712
November	75,037	35,267	107,718	50,627	76,857	26,131	152,027	71,452	102,756	48,295	97,327	33,091
December	89,906	42,256	121,162	56,946	92,718	31,524	105,513	49,591	134,125	63,038	95,347	32,417
Total	945,762	444,508	1,152,515	541,681	906,396	308,172	1,197,334	562,746	1,438,250	675,976	1,223,488	416,286

TECHNICAL NOTES

1. **Consumer Price Index** - The consumer price index is a measure of the change in the price of goods and services that were purchased. It is calculated by measuring the change in price over time of a range of products purchased and consumed.
2. **Migration** – The migration figures are derived from the immigration cards completed on arrival or departure from Tuvalu. Visitors to Tuvalu are defined as those who are intending to stay in Tuvalu for less than one year. Arrivals who intend to stay in Tuvalu for a year or more are treated as resident arrivals.
3. **Health** – The health figures are derived from records of the Medical Department.
4. **Resident population** - Is the number of people who are usual resident of a particular place regardless of their nationality. People from other nationality who have spend more than 12 months in a particular place would be regarded as residents of that particular area.
5. **Population** – The population figures are derived by adjusting the benchmark population figure of the 2002 Census of Population, for the number of births, deaths and inward and outward migration of residents.
6. **Education** – The education figure are derived from records the Department of Personnel and Training, Education Department and the Tuvalu Maritime School.
7. **Pre-service training** - Are study program awarded to student who have completed either form 5 or 6 at secondary school level and had never been working in the public service.
8. **In-service training** - Refers to study program awarded by the Government of Tuvalu to civil servant, employees of public corporations and organizations from the private sector.