

Population

- ❑ The total population of the Cook Islands enumerated during the 2006 Census increased by 1,553 (8.6%) when compared to the 2001 census. This count included a large number of visitors. At this point the final results for the Northern Group Islands have been released.
- ❑ All islands except for Rarotonga and Aitutaki showed a decline in population with Manihiki affected the most followed by Pukapuka and Penrhyn. Population growth rate for Rarotonga peaked at 3.0%, the highest since 1966. Offsetting to this was the massive decline in the Northern Group population bringing Cook Islands population growth rate to 1.7%. Another interesting factor is the Age Dependency ratio with 61 persons dependent on every 100 working persons. This is an indicator of the economic burden the productive portion of the population must carry.
- ❑ Population distribution shows that over 70% of the population is resident in Rarotonga increasing by 20% over the last 10 years. The sex ratio is about 103 males per 100 females.
- ❑ Estimated total population for 2008 was 22,100 with total registered birth at 261 averaging to nearly 1 child born per day. Crude birth rate is estimated at 18.4 per thousand resident population or 1.8%. Infant mortality rate (deaths to under 1 year age per 1,000 live births) for 2008 decreased from 13.8 per thousand in 2007 to 3.8 per thousand in 2008. In real numbers there was 1 infant death in 2008. Total death is below 100 per annum, but this number do not reflect deaths of Cook Islanders occurring abroad.
- ❑ Total marriages officiated in the Cook Islands for 2008 was 702 (averaging 2 marriages per day) decreased by 10.6% (83) over 2007. Over 90% of these marriages were non residents, a factor of the Cook islands being marketed as a South Seas wedding and honeymoon destination.
- ❑ A total of 4,504 dwellings were reported to be occupied during the 2006 Census, of which 4,305 were Private and 199 were Non Private. This does not include Vacant houses.

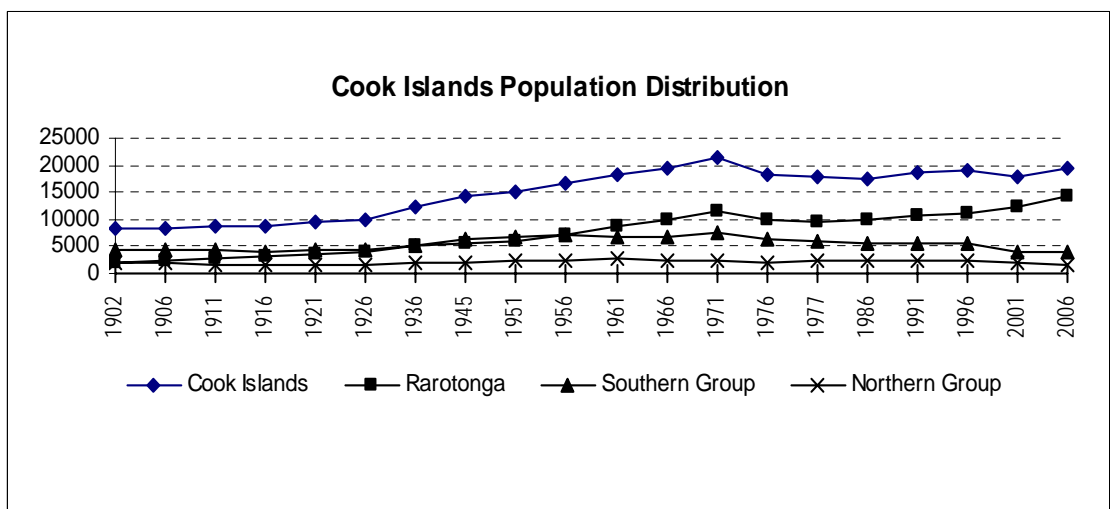


Table 1:1 Total Population and Land Area by Island

Census Year	Cook Islands	Rarotonga	Aitutaki	Mangaia	Atiu	Mauke	Mitiaro	Manuae	Manihiki	Penrhyn	Rakahanga	Pukapuka	Nassau	Tongareva	Suvarrow
	Land area in square kilometre														
	236.7	67.1	18.3	51.8	26.9	18.4	22.3	6.2	5.4	9.8	4.1	1.3	1.3	2.1	0.4
	Population														
1902	8,213	2,060	1,170	1,541	918	370	165	10	484	445	400	505	0	115	30
1906	8,518	2,441	1,162	1,531	918	446	210	0	521	420	352	435	0	82	0
1911	8,655	2,759	1,237	1,471	812	457	199	29	444	335	315	490	0	107	0
1916	8,805	3,064	1,302	1,245	759	490	237	23	493	326	295	474	0	90	7
1921	9,459	3,503	1,373	1,230	837	578	207	0	432	376	310	530	0	83	0
1926	10,082	3,936	1,431	1,249	933	511	238	23	416	395	327	526	0	97	0
1936	12,246	5,054	1,719	1,459	1,086	652	265	8	487	467	290	651	18	90	0
1945	14,088	5,573	2,356	1,845	1,114	804	229	28	435	654	318	662	0	65	5
1951	15,079	6,048	2,396	1,830	1,270	836	305	20	816	527	261	559	124	87	0
1956	16,680	7,212	2,565	1,970	1,307	815	275	32	661	619	341	638	110	77	58
1961	18,378	8,676	2,582	1,877	1,266	785	307	18	1,006	628	319	718	109	86	1
1966	19,247	9,971	2,579	2,002	1,327	671	293	15	584	545	323	684	167	86	0
1971	21,322	11,478	2,855	2,081	1,455	763	331	2	452	612	339	732	160	62	0
1976	18,126	9,802	2,423	1,530	1,312	710	305	0	266	531	283	785	123	56	0
1981	17,743	9,530	2,335	1,364	1,225	681	256	0	405	608	269	797	137	51	0
1986	17,614	9,826	2,390	1,229	957	692	273	0	508	497	282	761	119	66	6
1991	18,617	10,886	2,357	1,214	1,006	639	247	0	663	503	262	670	102	49	10
1996	19,103	11,225	2,389	1,108	956	652	319	0	668	606	249	779	99	49	4
2001	18,027	12,188	1,946	744	623	470	230	0	515	357	169	664	72	48	1
2006 ⁽¹⁾	19,570	14,155	2,204	640	569	390	219	0	353	254	141	507	75	63	0

NOTE: ⁽¹⁾ Preliminary results and is likely to change. As at date of publication, Northern Group population have been revised

Table 1:2 Average Annual Inter-censal Population Growth Rate and Dependency Ratio

Census Year	Cook Islands		Rarotonga		Southern Group		Northern Group	
	Growth Rate (%)	Dependency Ratio	Growth Rate (%)	Dependenc Ratio	Growth Rate (%)	Dependency Ratio	Growth Rate (%)	Dependency Ratio
1906	0.9	...	4.2	...	0.6	...	-2.2	...
1911	0.3	...	2.4	...	-0.3	...	-1.4	...
1916	0.3	...	2.1	...	-0.7	...	-0.1	...
1921	1.4	...	2.7	...	0.8	...	0.5	...
1926	1.3	...	2.3	...	0.7	...	0.3	...
1936	3.9	...	5.0	...	3.4	...	2.6	...
1945	2.8	...	2.0	...	4.1	...	1.3	...
1951	1.4	...	1.6	...	0.9	...	2.1	...
1956 ⁽³⁾	2.0	95.0	3.5	84.4	0.9	108.8	1.1	91.6
1961	1.9	110.2	3.7	91.5	-0.4	139.3	2.7	110.2
1966	0.9	123.4	2.8	105.3	0.2	151.1	-3.6	135.1
1971	2.0	121.3	2.8	103.6	1.7	148.4	-0.3	139.8
1976	-3.2	115.6	-3.2	94.5	-3.5	146.4	-2.9	149.1
1981	-0.5	91.8	-0.6	76.1	-1.3	113.4	2.1	116.8
1986	-0.1	75.4	0.6	60.2	-1.2	95.5	-0.2	101.6
1991 ⁽¹⁾	1.1	67.3	2.0	54.4	-0.3	86.5	0.2	89.9
1996 ⁽²⁾	0.5	79.0	0.6	68.0	-0.1	94.7	1.6	100.1
2001 ⁽²⁾	-1.2	68.5	1.6	58.6	-6.0	94.2	-5.9	93.2
2006 ⁽²⁾	1.6	61.0	3.0	53.6	0.0	82.1	-5.4	90.9

NOTE: ⁽¹⁾ Dependency Ratio for the years prior to 1991 is the ratio of the population less than 15 years and greater than 64 years compared to the population, 15 to 64 years of age.

⁽²⁾ Dependency Ratio for the years 1996, 2001 and 2006 is the ratio of the population less than 15 years and greater than 59 years compared to the population, 15 to 59 years of age.

⁽³⁾ Population for the years prior to 1956 were head counts only.

Table 1:3 Population by Sex

Census Year	Cook Islands		Rarotonga		Percentage Distribution		Sex Ratio
	Males	Females	Males	Females	Rarotong	Outer Islands	
1936	6,376	5,870	2,649	2,405	41.3	58.7	108.6
1945	7,185	6,903	2,879	2,694	39.6	60.4	104.1
1951	7,827	7,252	3,211	2,837	40.1	59.9	107.9
1956	8,695	7,985	3,805	3,407	43.2	56.8	108.9
1961	9,454	8,924	4,470	4,206	47.2	52.8	105.9
1966	9,749	9,498	5,047	4,924	51.8	48.2	102.6
1971	10,910	10,413	5,917	5,561	53.8	46.2	104.8
1976	9,294	8,834	5,080	4,722	54.1	45.9	105.2
1981	9,109	8,564	4,933	4,597	53.9	46.1	106.4
1986	9,188	8,426	5,143	4,683	55.8	44.2	109.0
1991	9,697	8,920	5,619	5,267	58.5	41.5	108.7
1996	9,842	9,261	5,730	5,495	58.8	41.2	106.3
2001	9,303	8,724	6,259	5,929	67.6	32.4	106.6
2006	9,931	9,639	7,166	6,989	72.3	27.7	103.1

Table 1:4 Population Estimates & Vital Statistics

Period	Total Population Estimate	Resident Estimate ⁽⁴⁾	Total Births	Crude Birth Rate ⁽²⁾	Total Deaths	Crude Death Rate ⁽²⁾	Natural Increase	Infant Deaths	Infant Mortality Rate ⁽³⁾	Marriages
YEAR ⁽¹⁾										
1967	19,400	...	817	42.1	162	8.4	34
1968	20,000	...	901	45.1	163	8.2	37
1969	20,500	...	831	40.5	135	6.6	34
1970	20,800	...	773	37.2	168	8.1	29	41	53.0	...
1971	21,200	...	775	36.6	147	6.9	30	35	45.2	...
1972	21,300	...	703	33.0	104	4.9	28	24	34.1	...
1973	20,900	...	673	32.2	118	5.6	27	24	35.7	...
1974	19,900	...	567	28.5	108	5.4	23	19	33.5	...
1975	19,200	...	516	26.9	125	6.5	20	23	44.6	...
1976	18,400	...	458	24.9	107	5.8	19	15	32.8	...
1977	18,400	...	505	27.4	173	9.4	18	16	31.7	...
1978	18,500	...	520	28.1	163	8.8	19	20	38.5	...
1979	18,200	...	468	25.7	117	6.4	19	18	38.5	...
1980	17,900	...	492	27.5	125	7.0	21	12	24.4	...
1981	17,400	...	461	26.5	102	5.9	21	9	19.5	...
1982	17,400	...	439	25.2	132	7.6	18	13	29.6	...
1983	17,400	...	414	23.8	132	7.6	16	9	21.7	...
1984	17,100	...	420	24.6	115	6.7	18	5	11.9	94
1985	17,200	...	423	24.6	137	8.0	17	12	28.4	113
1986	16,700	...	430	25.7	119	7.1	19	12	27.9	117
1987	16,500	...	408	24.7	128	7.8	17	12	29.4	91
1988	17,700	...	434	24.5	97	5.5	19	5	11.5	122
1989	16,500	...	448	27.2	97	5.9	21	12	26.8	118
1990	17,000	...	481	28.3	130	7.6	21	12	24.9	130
1991	18,200	...	463	25.4	137	7.5	18	12	25.9	174
1992	19,000	17,500	510	29.1	104	5.9	23	3	5.9	169
1993	19,700	17,300	494	28.6	101	5.8	23	5	10.1	224
1994	19,500	18,400	548	29.8	110	6.0	24	3	5.5	237
1995	19,400	18,400	490	26.6	102	5.5	21	3	6.1	252
1996	20,000	18,800	510	27.1	110	5.9	21	12	23.5	210
1997	18,200	17,400	413	23.7	144	8.3	15	15	36.3	229
1998	17,300	16,600	386	23.3	108	6.5	17	8	20.7	259
1999	16,400	15,500	361	23.3	96	6.2	17	5	13.9	387
2000	17,900	15,000	309	20.6	115	7.7	13	6	19.4	715
2001	18,100	14,000	313	22.4	88	6.3	16	4	12.8	578
2002	18,400	14,800	292	19.7	97	6.6	13	2	6.8	604
2003	18,400	13,900	298	21.4	87	6.3	15	5	16.8	623
2004	20,300	13,500	297	22.0	99	7.3	15	5	16.8	645
2005	20,200	12,400	280	22.6	91	7.3	15	6	21.4	755
2006	20,700	11,800	278	23.6	85	7.2	16	3	10.8	707
2007 (p)	21,000	14,000	289	20.6	87	6.2	14	4	13.8	785
2008 (p)	21,200	13,000	261	20.1	58	4.5	16	1	3.8	702

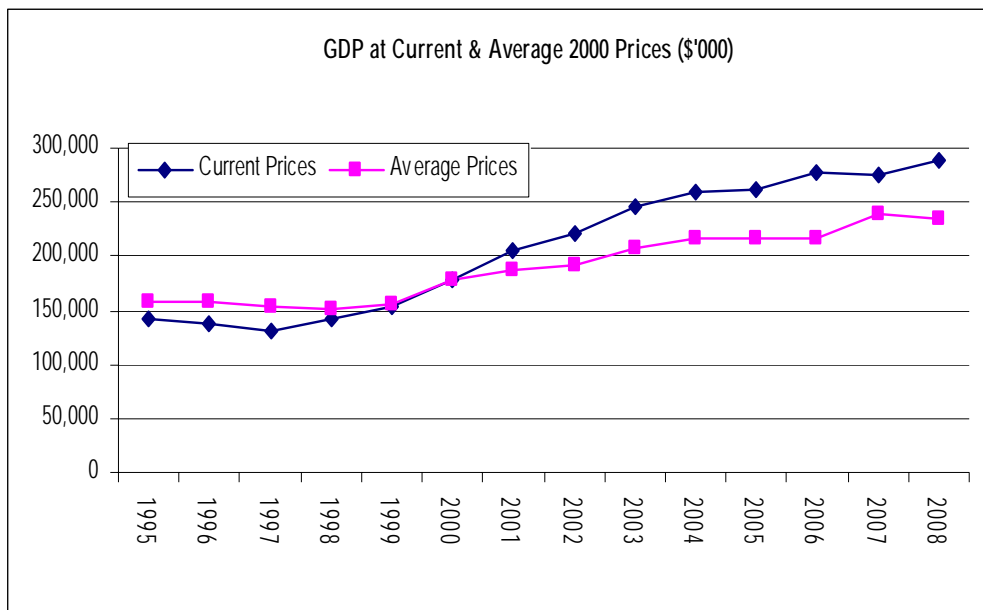
- Note :
- (1) Annual population is estimated at mid year or June Quarter
 - (2) Crude birth rate and crude death rate are calculated per thousand Resident Population as of 1992
 - (3) Infant mortality rate is calculated per thousand births
 - (4) Resident population comprises only those normally resident in the Cook Islands

Table 1:5 Private (occupied) Dwellings and Total Non Private Dwellings

Island	1996		2001		2006		% Change over 2001	
	Private	Non Private	Private	Non-Private	Private	Non-Private	Private	Non Private
COOK ISLANDS	4,153	42	3,880	162	4,308	201	11.0	24.1
RAROTONGA	2,569	33	2,531	138	2,964	159	17.1	15.2
SOUTHERN GROUP (excluding Rarotonga)	1,127	9	965	22	1,018	39	5.5	77.3
Aitutaki	496	6	435	17	511	25	17.5	47.1
Mangaia	237	0	197	2	180	4	-8.6	100.0
Atiu	197	1	161	2	158	6	-1.9	200.0
Mauke	133	2	110	0	105	2	-4.5	0.0
Mitiaro	64	0	62	1	64	2	3.2	100.0
NORTHERN GROUP	457	0	384	2	326	3	-15.1	50.0
Manihiki	149	0	117	1	95	1	-18.8	0.0
Penrhyn	113	0	83	1	71	2	-14.5	100.0
Rakahanga	42	0	32	0	31	0	-3.1	0.0
Pukapuka	120	0	124	0	96	0	-22.6	0.0
Nassau	21	0	15	0	15	0	0.0	0.0
Palmerston	11	0	12	0	18	0	50.0	0.0
Suvarrow	1	0	1	0	0	0	-100.0	0.0

National Accounts

- ❑ Gross Domestic Product (GDP) at current market prices stands at \$289.3 million for the calendar year 2008 compared to \$274.5 million in the previous year. This is equivalent to \$13,648 GDP per capita.
- ❑ In constant 2000 prices, GDP was at \$235.5 million in 2008. This is equivalent to \$11,109 GDP per capita and represents a real annual decrease of 1.2% over 2007.
- ❑ Contribution to GDP by sector shows corporate enterprises contribution at 63.5%, public sector (public enterprises and public administration) at 20.8% while the remaining sectors contributions stood at 15.7%.
- ❑ The overall GDP growth for 2008 was driven mainly by increases in Mining & Manufacturing and Public Administration industry which was estimated to have contributed 7.0% and 4.6% respectively in real terms. These increases were offset by decreases in the Community, Social & Personal Services, Construction, Finance & Business Services, Agriculture & Fishing, Restaurants & Accommodation, Wholesale & Retail Trade industry with 10.6%, 8.0%, 4.4%, 3.7%, 2.9% and 1.2% respectively.



**Table 2.1 Gross Domestic Product at
Current Market Prices**

Calendar Year	GDP ('000)	Growth Rate (%)	Mid Year Population	GDP per Capita (\$)	Growth Rate per capita (%)
1995	142,311	-11.7	19,400	7,336	-11.3
1996	137,002	-3.7	20,000	6,850	-6.6
1997	130,183	-5.0	18,300	7,114	3.9
1998	141,054	8.4	17,400	8,107	14.0
1999	152,760	8.3	16,500	9,258	14.2
2000	177,834	16.4	18,000	9,880	6.7
2001	205,679	15.7	18,200	11,301	14.4
2002	220,550	7.2	18,400	11,986	6.1
2003	246,038	11.6	18,400	13,372	11.6
2004	258,428	5.0	20,300	12,730	-4.8
2005	261,347	1.1	20,200	12,938	1.6
2006	277,649	6.2	20,800	13,349	3.2
2007(r)	274,542	-1.1	21,000	13,073	-2.1
2008(p)	289,329	5.4	21,200	13,648	4.4

**Table 2.2 Gross Domestic Product at
Average 2000 Prices**

Calendar Year	GDP ('000)	Growth Rate (%)	Mid Year Population	GDP per Capita (\$)	Growth Rate per capita (%)
1995	157,388	-3.2	19,400	8,113	-2.7
1996	156,958	-0.3	20,000	7,848	-3.3
1997	153,272	-2.3	18,300	8,376	6.7
1998	152,089	-0.8	17,400	8,741	4.4
1999	156,167	2.7	16,500	9,465	8.3
2000	177,834	13.9	18,000	9,880	4.4
2001	186,565	4.9	18,200	10,251	3.8
2002	191,361	2.6	18,400	10,400	1.5
2003	206,976	8.2	18,400	11,249	8.2
2004	215,910	4.3	20,300	10,636	-5.4
2005	215,968	0.0	20,200	10,691	0.5
2006	217,487	0.7	20,800	10,456	-2.2
2007(r)	238,247	9.5	21,000	11,345	8.5
2008(p)	235,506	-1.2	21,200	11,109	-2.1

Table 2.3 Gross Domestic Product at Current Prices by Sector

Calendar Year	Total	Unincorporated Enterprise	Corporate Enterprise	Public Enterprise	Subsistence	Public Administration	Ownership of Dwellings	/less Imputed Bank Charges
	(\$'000)							
1995	142,311	5,336	64,465	20,391	10,881	38,226	8,292	5,281
1996	137,003	5,490	66,986	19,247	11,182	31,185	8,337	5,423
1997	130,183	5,937	69,998	15,649	10,896	24,326	8,775	5,398
1998	141,054	5,854	87,906	7,781	11,096	23,954	9,633	5,170
1999	152,760	6,337	100,647	6,241	11,409	23,047	10,486	5,408
2000	177,834	7,378	121,404	8,338	11,740	23,156	11,335	5,516
2001	205,679	8,230	144,214	8,068	12,556	26,288	11,948	5,626
2002	220,550	8,914	153,967	8,290	13,987	29,160	11,971	5,739
2003	246,038	11,428	167,909	9,762	18,670	31,635	12,488	5,854
2004	258,428	12,513	176,643	10,368	19,205	33,016	12,654	5,971
2005	261,347	11,664	180,424	11,085	17,088	33,831	13,346	6,090
2006	277,649	12,305	188,284	12,921	17,667	34,854	17,831	6,212
2007(r)	274,542	12,165	179,433	14,039	19,818	37,179	18,245	6,336
2008(p)	289,329	12,456	183,710	16,013	21,039	44,178	18,396	6,463
	Percentage change over previous year							
1995	-11.7	-17.8	-5.3	-4.0	-52.9	-4.0	6.4	0.3
1996	-3.7	2.9	3.9	-5.6	2.8	-18.4	0.5	2.7
1997	-5.0	8.1	4.5	-18.7	-2.6	-22.0	5.3	-0.5
1998	8.4	-1.4	25.6	-50.3	1.8	-1.5	9.8	-4.2
1999	8.3	8.3	14.5	-19.8	2.8	-3.8	8.9	4.6
2000	16.4	16.4	20.6	33.6	2.9	0.5	8.1	2.0
2001	15.7	11.6	18.8	-3.2	7.0	13.5	5.4	2.0
2002	7.2	8.3	6.8	2.7	11.4	10.9	0.2	2.0
2003	11.6	28.2	9.1	17.8	33.5	8.5	4.3	2.0
2004	5.0	9.5	5.2	6.2	2.9	4.4	1.3	2.0
2005	1.1	-6.8	2.1	6.9	-11.0	2.5	5.5	2.0
2006	6.2	5.5	4.4	16.6	3.4	3.0	33.6	2.0
2007(r)	-1.1	-1.1	-4.7	8.7	12.2	6.7	2.3	2.0
2008(p)	5.4	2.4	2.4	14.1	6.2	18.8	0.8	2.0

Table 2.4 Gross Domestic Product at Current Prices by Industry

Calendar Year	Total	Agriculture & Fishing	Mining & Manufacturing	Electricity & Water Supply	Construction	Wholesale & Retail Trade	Restaurants & Accommodation	Transport & Communication	Finance & Business Services	Community, & Personal Services	Public Admin	Ownership of Dwellings	less Imputed Bank Charges
	('000)												
1995	142,311	13,975	4,212	3,980	2,971	27,694	13,198	17,918	14,018	3,108	38,226	8,292	5,281
1996	137,002	15,602	3,747	3,687	3,268	28,174	13,547	17,746	13,659	3,474	31,185	8,337	5,423
1997	130,183	15,858	3,845	2,684	3,253	28,042	13,905	17,663	13,594	3,636	24,326	8,775	5,398
1998	141,054	20,931	4,776	3,436	3,877	29,460	14,886	16,450	15,184	3,637	23,954	9,633	5,170
1999	152,760	23,156	4,997	3,794	4,213	32,724	16,830	20,052	14,626	4,243	23,047	10,486	5,408
2000	177,834	23,822	6,146	3,524	5,146	39,709	23,338	25,172	16,851	5,153	23,156	11,335	5,516
2001	205,679	23,662	7,467	3,111	6,625	44,900	33,180	30,031	18,031	6,062	26,288	11,948	5,626
2002	220,550	27,223	7,762	3,287	6,612	49,648	36,009	30,854	16,793	6,971	29,160	11,971	5,739
2003	246,038	37,646	8,446	3,848	8,910	55,365	36,995	33,115	16,174	7,271	31,635	12,488	5,854
2004	258,428	35,271	9,360	4,159	10,333	60,425	39,303	34,799	18,061	7,018	33,016	12,654	5,971
2005	261,347	33,240	9,588	4,792	7,752	65,710	39,607	35,671	17,710	6,190	33,831	13,346	6,090
2006	277,649	32,025	9,131	5,589	9,622	67,134	44,697	36,563	18,760	7,655	34,854	17,831	6,212
2007(r)	274,542	21,784	10,430	6,208	10,879	64,729	46,364	36,397	20,883	7,780	37,179	18,245	6,336
2008(p)	289,329	22,015	11,726	7,425	10,539	67,194	47,370	38,665	20,979	7,305	44,178	18,396	6,463
	Percentage change over previous year												
1995	-11.7	-50.4	-4.8	-8.8	-31.1	-7.5	-7.1	-2.5	6.0	69.9	-4.0	6.4	0.3
1996	-3.7	11.6	-11.0	-7.4	10.0	1.7	2.6	-1.0	-2.6	11.8	-18.4	0.5	2.7
1997	-5.0	1.6	2.6	-27.2	-0.5	-0.5	2.6	-0.5	-0.5	4.7	-22.0	5.3	-0.5
1998	8.4	32.0	24.2	28.0	19.2	5.1	7.1	-6.9	11.7	0.0	-1.5	9.8	-4.2
1999	8.3	10.6	4.6	10.4	8.7	11.1	13.1	21.9	-3.7	16.7	-3.8	8.9	4.6
2000	16.4	2.9	23.0	-7.1	22.1	21.3	38.7	25.5	15.2	21.4	0.5	8.1	2.0
2001	15.7	-0.7	21.5	-11.7	28.7	13.1	42.2	19.3	7.0	17.6	13.5	5.4	2.0
2002	7.2	15.1	3.9	5.7	-0.2	10.6	8.5	2.7	-6.9	15.0	10.9	0.2	2.0
2003	11.6	38.3	8.8	17.1	34.8	11.5	2.7	7.3	-3.7	4.3	8.5	4.3	2.0
2004	5.0	-6.3	10.8	8.1	16.0	9.1	6.2	5.1	11.7	-3.5	4.4	1.3	2.0
2005	1.1	-5.8	2.4	15.2	-25.0	8.7	0.8	2.5	-1.9	-11.8	2.5	5.5	2.0
2006	6.2	-3.7	-4.8	16.6	24.1	2.2	12.9	2.5	5.9	23.7	3.0	33.6	2.0
2007(r)	-1.1	-32.0	14.2	11.1	13.1	-3.6	3.7	-0.5	11.3	1.6	6.7	2.3	2.0
2008(p)	5.4	1.1	12.4	19.6	-3.1	3.8	2.2	6.2	0.5	-6.1	18.8	0.8	2.0

Table 2.5 Gross Domestic Product at Average 2000 Prices by Industry

Calendar Year	Total	Agriculture & Fishing	Mining & Manufacturing	Electricity & Water Supply	Construction	Wholesale & Retail Trade	Restaurants & Accommodation	Transport & Communication	Finance & Business Services	Community & Personal Services	Public Admin	Ownership of Dwellings	less Imputed Bank Charges
	('000)												
1995	157,388	13,904	4,388	2,824	2,978	28,815	15,871	18,481	14,591	3,235	46,406	11,391	5,495
1996	156,958	15,665	3,893	2,831	3,264	29,271	16,066	18,330	14,190	3,610	43,815	11,658	5,634
1997	153,272	16,329	4,010	2,799	3,300	29,245	16,467	18,379	14,178	3,792	37,753	11,579	4,560
1998	152,089	21,800	4,973	2,829	3,958	30,675	15,906	17,144	15,811	3,787	29,025	11,498	5,316
1999	156,167	23,804	5,130	3,118	4,285	33,590	16,950	20,237	15,012	4,356	23,821	11,416	5,551
2000	177,834	23,822	6,146	3,524	5,146	39,709	23,338	25,172	16,851	5,153	23,156	11,335	5,516
2001	186,565	23,130	7,041	3,687	6,062	42,339	25,022	27,950	17,003	5,716	22,631	11,290	5,306
2002	191,361	25,316	6,861	3,924	5,951	45,557	24,388	27,766	16,849	6,397	22,373	11,245	5,266
2003	206,976	32,470	7,581	4,155	7,801	49,698	25,872	29,257	14,518	6,527	22,818	11,531	5,255
2004	215,910	31,632	8,275	4,446	8,890	53,420	26,800	30,273	15,967	6,205	23,793	11,486	5,279
2005	215,968	30,522	8,254	4,265	6,438	56,567	27,918	30,450	15,245	5,329	24,783	11,441	5,243
2006	217,487	29,130	7,555	4,247	7,432	55,546	29,276	30,231	15,522	6,334	25,261	12,096	5,140
2007(r)	238,247	25,673	10,020	4,808	10,104	62,186	31,562	34,472	20,062	7,474	25,778	12,194	6,087
2008(p)	235,506	24,714	10,725	4,780	9,294	61,460	30,638	34,675	19,189	6,681	26,965	12,295	5,912
	Percentage change over previous year												
1995	-3.2	-59.4	3.5	-32.5	-29.3	0.3	16.4	5.0	15.1	84.5	21.6	39.0	8.8
1996	-0.3	12.7	-11.3	0.3	9.6	1.6	1.2	-0.8	-2.7	11.6	-5.6	2.3	2.5
1997	-2.3	4.2	3.0	-1.1	1.1	-0.1	2.5	0.3	-0.1	5.1	-13.8	-0.7	-19.1
1998	-0.8	33.5	24.0	1.1	19.9	4.9	-3.4	-6.7	11.5	-0.1	-23.1	-0.7	16.6
1999	2.7	9.2	3.2	10.2	8.3	9.5	6.6	18.0	-5.0	15.0	-17.9	-0.7	4.4
2000	13.9	0.1	19.8	13.0	20.1	18.2	37.7	24.4	12.2	18.3	-2.8	-0.7	-0.6
2001	4.9	-2.9	14.6	4.6	17.8	6.6	7.2	11.0	0.9	10.9	-2.3	-0.4	-3.8
2002	2.6	9.4	-2.6	6.4	-1.8	7.6	-2.5	-0.7	-0.9	11.9	-1.1	-0.4	-0.7
2003	8.2	28.3	10.5	5.9	31.1	9.1	6.1	5.4	-13.8	2.0	2.0	2.5	-0.2
2004	4.3	-2.6	9.1	7.0	14.0	7.5	3.6	3.5	10.0	-4.9	4.3	-0.4	0.5
2005	0.0	-3.5	-0.3	-4.1	-27.6	5.9	4.2	0.6	-4.5	-14.1	4.2	-0.4	-0.7
2006	0.7	-4.6	-8.5	-0.4	15.4	-1.8	4.9	-0.7	1.8	18.9	1.9	5.7	-2.0
2007(r)	9.5	-11.9	32.6	13.2	36.0	12.0	7.8	14.0	29.3	18.0	2.0	0.8	18.4
2008(p)	-1.2	-3.7	7.0	-0.6	-8.0	-1.2	-2.9	0.6	-4.4	-10.6	4.6	0.8	-2.9

Consumer Price Index

- ◆ The Consumer Price Index number, All Groups for the year 2008 stood at 110.4 with a significant increase of 7.8% over the year. Major contributors to the annual increase were the Transport group, Tobacco & Alcohol group, Household Operation group and Housing group showing an upward trend of 12.8%, 11.0%, 9.0% and 8.5% respectively.
- ◆ In the Transport group, increase in prices of petrol and diesel contributed to the annual increase in Internal Travel, Motor Fuel and Oil and Overseas Travel subgroups recording 38.2%, 24.4% and 23.5% respectively. Significant increase was also noted in the Tobacco & Alcohol group due to the 300% increase in retail prices of Tobacco Products. Over the same period Fuel & Light subgroup recorded the highest increase of 26.3% in the Household Operation group, which was mainly driven by the rise in prices of electricity rates.
- ◆ Minor increases were noted in the Food & Miscellaneous groups with 5.9% and 2.2%.
- ◆ To offset the increases, Apparel group showed a negative movement of 3.1% over the year. This is due to the downward trend in the Footwear and Clothing subgroups down by 5.0% and 3.0% respectively.

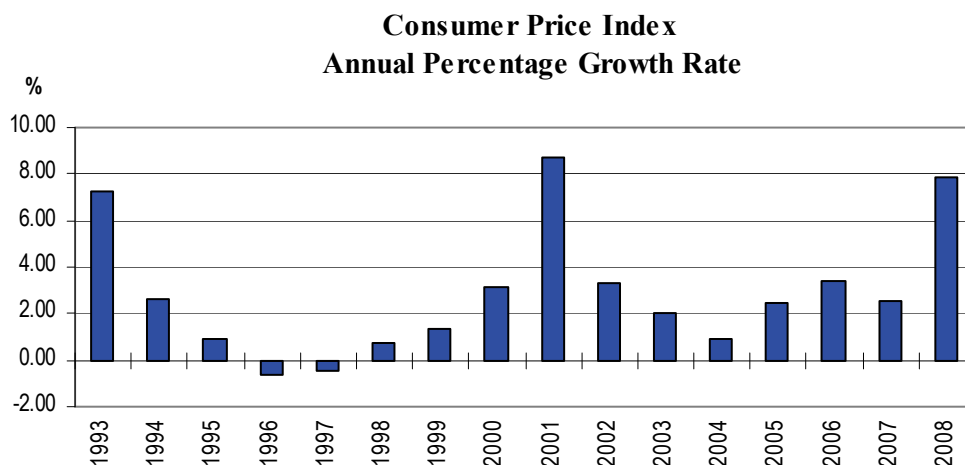


Table 3.1 Consumer Price Index By Major Groups

Calendar Year	All Groups	Food	Housing	Household Operation	Apparel	Transport	Tobacco & Alcohol	Miscellaneous
Base: December 2006 = 100								
1967	5.66	5.73	5.22	5.81	6.60	5.54	5.88	5.35
1968	5.99	6.14	5.41	5.87	6.70	6.18	5.93	5.97
1969	6.19	7.43	5.54	6.20	6.85	6.38	6.11	6.36
1970	6.46	6.67	5.75	6.38	6.95	6.43	6.39	6.74
1971	7.14	7.62	6.14	6.76	7.35	6.48	6.64	7.53
1972	7.96	8.48	6.84	7.47	8.26	7.55	7.09	7.82
1973	8.73	9.38	7.36	7.99	9.52	7.85	7.51	8.20
1974	9.86	10.43	8.14	9.05	12.08	8.76	8.22	8.86
1975	11.40	12.13	9.56	10.51	13.74	10.52	9.17	9.54
1976	14.02	15.15	10.86	12.88	16.24	13.18	10.88	11.32
1977	16.90	18.21	12.32	15.43	20.60	16.10	12.71	12.79
1978	18.87	20.09	13.43	17.36	24.04	17.23	14.99	15.02
1979	20.98	22.40	14.54	20.25	26.12	19.50	16.08	16.18
1980	23.87	25.27	16.63	24.60	30.27	22.07	17.32	18.01
1981	28.84	30.83	20.85	31.07	32.46	29.28	19.90	22.20
1982	32.44	34.40	23.60	35.22	36.24	35.73	22.04	25.65
1983	34.88	36.58	23.99	36.27	40.60	37.98	27.31	28.72
1984	39.03	41.00	26.15	39.05	44.94	42.26	32.86	33.04
1985	43.94	45.29	31.68	46.22	50.03	49.32	39.78	37.14
1986	48.31	50.06	37.94	49.74	53.87	52.49	43.23	42.21
1987	53.54	55.43	41.37	53.30	60.56	54.46	53.89	46.77
1988	57.98	59.96	45.18	58.66	64.48	56.97	61.39	50.00
1989	61.42	64.13	47.23	60.23	67.26	60.11	63.30	57.00
1990	64.65	66.58	51.14	63.38	68.94	63.16	69.51	61.83
1991	68.43	68.02	55.47	69.27	70.81	68.72	76.82	64.06
1992	70.37	70.43	60.11	70.28	73.21	70.94	79.02	67.25
1993	75.51	75.25	63.62	75.83	78.43	75.06	81.16	74.10
1994	77.52	76.70	68.15	77.20	81.45	77.79	81.86	77.25
1995	78.20	76.47	71.47	77.72	83.17	78.23	84.63	78.46
1996	77.74	75.93	71.24	77.74	82.28	76.68	86.40	77.68
1997	77.41	75.83	68.61	75.21	83.37	77.82	87.85	78.04
1998	77.99	76.92	67.63	76.20	84.12	78.29	87.18	77.97
1999	79.04	77.24	67.53	82.47	81.46	78.91	85.51	79.21
2000	81.53	79.83	67.24	81.13	86.31	83.05	90.72	81.60
2001	88.63	87.29	78.62	85.81	95.68	91.69	96.47	85.09
2002	91.61	93.31	78.91	86.11	97.83	92.28	98.05	92.71
2003	93.44	95.72	82.28	87.42	96.80	93.42	98.31	97.48
2004	94.26	96.55	83.72	87.82	99.06	94.97	97.67	98.78
2005	96.57	97.64	87.83	93.46	100.02	97.95	100.00	96.17
2006	99.82	99.95	99.31	98.87	99.98	100.72	99.77	99.39
2007	102.34	100.16	107.21	104.57	89.83	103.97	101.81	101.65
2008	110.36	106.05	116.34	113.98	87.03	117.25	113.03	103.90

Table 3.2 Consumer Price Index - Percentage Change

Calendar Year	All Groups	Food	Housing	Household Operation	Apparel	Transport	Tobacco & Alcohol	Miscellaneous
Base: December 2006 = 100								
1968	5.80	7.12	3.70	1.00	1.49	11.56	0.90	11.50
1969	3.25	21.02	2.44	5.64	2.25	3.19	2.98	6.56
1970	4.41	-10.15	3.85	3.00	1.44	0.77	4.53	6.07
1971	10.59	14.14	6.63	5.91	5.67	0.85	4.06	11.76
1972	11.37	11.29	11.52	10.56	12.43	16.39	6.73	3.81
1973	9.72	10.61	7.50	6.99	15.27	4.06	5.89	4.80
1974	12.94	11.26	10.71	13.21	26.92	11.58	9.48	8.14
1975	15.63	16.33	17.42	16.09	13.70	20.06	11.60	7.59
1976	23.04	24.90	13.56	22.58	18.22	25.30	18.60	18.70
1977	20.47	20.15	13.44	19.82	26.82	22.14	16.82	12.94
1978	11.69	10.33	9.00	12.48	16.71	7.01	17.92	17.50
1979	11.20	11.51	8.33	16.64	8.66	13.16	7.30	7.67
1980	13.73	12.79	14.33	21.49	15.90	13.20	7.72	11.35
1981	20.84	22.03	25.37	26.30	7.23	32.66	14.84	23.25
1982	12.50	11.57	13.22	13.37	11.64	22.04	10.80	15.55
1983	7.51	6.33	1.66	2.98	12.04	6.30	23.87	11.95
1984	11.90	12.07	8.98	7.66	10.68	11.26	20.34	15.07
1985	12.57	10.47	21.13	18.35	11.33	16.71	21.06	12.39
1986	9.95	10.53	19.79	7.63	7.68	6.43	8.67	13.65
1987	10.82	10.73	9.04	7.15	12.41	3.75	24.65	10.81
1988	8.29	8.18	9.19	10.06	6.47	4.62	13.92	6.91
1989	5.94	6.94	4.55	2.67	4.32	5.52	3.10	13.99
1990	5.26	3.82	8.28	5.24	2.50	5.08	9.81	8.47
1991	5.84	2.16	8.46	9.29	2.70	8.80	10.51	3.61
1992	2.84	3.55	8.36	1.54	3.40	3.22	2.87	4.98
1993	7.30	6.84	5.85	7.80	7.11	5.80	2.71	10.19
1994	2.66	1.94	7.11	1.81	3.87	3.63	0.87	4.26
1995	0.88	-0.31	4.88	0.67	2.11	0.57	3.38	1.56
1996	-0.59	-0.70	-0.32	0.03	-1.07	-1.99	2.09	-0.99
1997	-0.42	-0.13	-3.70	-3.25	1.32	1.50	1.68	0.47
1998	0.75	1.44	-1.43	1.31	0.90	0.60	-0.76	-0.09
1999	1.35	0.41	-0.15	8.23	-3.17	0.80	-1.92	1.58
2000	3.15	3.36	-0.43	-1.63	5.96	5.24	6.10	3.02
2001	8.71	9.34	16.93	5.77	10.86	10.41	6.33	4.28
2002	3.36	6.89	0.37	0.35	2.24	0.63	1.64	8.95
2003	2.00	2.59	4.26	1.53	-1.05	1.24	0.27	5.15
2004	0.88	0.86	1.75	0.46	2.33	1.66	-0.65	1.34
2005	2.45	1.14	4.91	6.42	0.97	3.14	2.38	-2.64
2006	3.36	2.36	13.07	5.79	-0.04	2.83	-0.23	3.35
2007	2.53	0.21	7.96	5.76	-10.15	3.23	2.04	2.28
2008	7.83	5.88	8.52	9.00	-3.12	12.77	11.02	2.22

Table 3.3 Consumer Price Index by Major Groups and Sub-groups

Major Groups & Subgroups	Base Weight	Calendar Year																	
		1992	1993	1994	1995	1996	1997	1998	1999	2000	2001	2002	2003	2004	2005	2006	2007	2008	
FOOD	29.39	70.43	75.25	76.70	76.47	75.93	75.83	76.92	77.24	79.83	87.29	93.31	95.72	96.55	97.64	99.95	100.14	106.05	
Fruits & Vegetables	3.56	72.96	76.52	80.20	72.13	70.90	68.40	67.15	72.38	73.19	82.32	86.38	88.13	94.49	95.40	99.79	104.44	110.81	
Meat, Poultry & Fish	7.96	70.23	77.74	80.74	82.50	81.90	81.58	82.40	81.68	84.66	92.50	99.29	98.26	97.15	98.74	100.43	98.89	101.94	
Cereal Products	5.32	69.49	71.37	69.23	68.32	67.55	69.88	72.65	72.38	74.11	81.64	90.16	94.61	95.16	98.02	99.94	99.19	111.88	
Soft Drink & Sweets	2.12	73.06	78.17	79.94	80.01	78.82	79.26	82.44	77.25	82.43	88.29	92.68	93.64	96.99	96.78	99.71	99.03	102.91	
Farm Products, Fats & Oils	2.57	79.08	82.29	83.97	83.83	83.02	83.45	83.56	81.25	83.18	87.69	94.10	95.36	96.84	97.09	99.29	100.76	113.58	
Other Food	2.46	79.44	84.16	84.24	85.12	85.81	86.84	90.39	87.24	91.11	95.32	98.61	99.10	98.90	97.28	99.79	100.15	105.87	
Prepared Food	5.39	91.18	90.38	82.97	86.24	87.15	79.58	77.08	74.56	80.37	87.12	92.88	109.75	101.06	100.30	99.35	100.24	100.96	
HOUSING	13.24	60.11	63.62	68.15	71.47	71.24	68.61	67.63	67.53	67.24	78.62	78.91	82.28	83.72	87.83	99.31	107.21	116.34	
Rent & Mortgages	8.99	51.09	54.88	53.79	56.54	57.19	56.63	54.52	54.97	54.97	72.26	71.69	74.37	75.26	79.01	98.16	110.10	122.77	
House Insurance	0.54	72.27	72.93	78.47	88.58	95.02	95.12	95.40	96.27	88.65	86.11	90.42	90.42	90.42	90.42	97.49	100.00	100.00	
House Maintenance	3.70	78.41	85.69	93.99	97.10	94.53	88.70	88.43	87.57	87.92	89.95	91.26	96.54	99.30	104.81	101.88	101.24	103.14	
HOUSEHOLD OPERATION	17.40	70.28	75.83	77.20	77.72	77.74	75.21	76.20	82.47	81.13	85.81	86.11	87.42	87.82	93.46	98.87	103.97	113.98	
Fuel & Light	6.20	55.37	59.49	56.26	56.84	52.92	57.14	60.13	64.33	63.32	70.62	70.50	70.64	71.85	81.18	95.68	108.87	137.51	
Household Appliances	2.35	104.15	118.24	126.47	125.71	123.41	105.49	104.18	96.62	88.38	96.76	100.96	102.95	103.38	108.74	105.15	101.32	102.65	
Furniture	1.20	49.13	71.43	73.82	76.12	76.90	73.20	76.90	76.22	77.02	94.18	98.16	100.02	100.01	100.00	100.00	112.06	115.23	
Home Furnishing	0.57	61.08	71.35	80.23	82.13	81.73	77.48	79.25	82.12	94.38	96.52	98.64	102.04	103.90	103.08	100.08	97.31	99.47	
Cleaning Supplies	0.69	81.80	84.58	84.66	83.04	83.37	83.37	84.98	85.29	87.82	91.16	94.99	98.41	100.78	100.62	100.68	100.80	102.53	
Household Supplies	0.84	83.33	100.08	103.17	103.81	100.81	96.87	95.34	97.64	98.76	106.36	105.58	104.61	102.73	103.43	101.85	97.19	95.16	
Household Services	5.54	72.86	74.51	75.21	76.87	77.20	77.36	77.82	100.52	99.96	94.49	91.53	94.07	93.35	97.46	98.73	100.00	97.61	
APPAREL	4.69	73.21	78.43	81.45	83.17	82.28	83.37	84.12	81.46	86.31	95.68	97.83	96.80	99.06	100.02	99.98	89.83	87.03	
Clothing	2.96	68.87	74.57	77.75	79.70	79.63	81.07	82.83	81.08	83.04	94.69	95.78	94.98	97.71	99.78	99.97	89.21	86.57	
Clothing Materials	0.51	166.34	169.15	172.10	174.17	165.38	150.49	141.32	124.82	133.74	130.75	145.05	121.27	121.27	105.32	100.00	100.00	100.00	
Footwear	1.22	58.67	64.17	67.69	68.68	66.42	76.97	78.97	77.05	89.43	94.04	97.57	98.78	100.00	100.00	100.00	87.05	82.68	
TRANSPORTATION	18.56	70.94	75.06	77.79	78.23	76.68	77.82	78.29	78.91	83.05	91.69	92.28	93.42	94.97	97.95	100.72	103.97	117.25	
Internal Travel	1.16	61.15	67.97	67.97	69.28	70.95	71.73	73.29	77.97	80.94	88.43	89.54	89.75	90.03	91.01	95.51	108.63	150.18	
Overseas Travel	3.94	71.73	71.73	71.73	71.73	71.74	71.74	70.48	66.68	68.34	87.36	92.24	94.13	96.81	99.80	100.00	111.53	137.74	
Motor Vehicles	7.56	94.69	103.01	109.00	110.72	104.67	105.65	107.48	110.04	108.22	109.72	113.00	111.78	109.38	106.64	102.54	99.71	99.66	
Motor Fuel & Oil	3.52	50.62	53.67	52.93	53.83	55.21	58.40	58.87	59.41	72.50	81.05	74.37	76.24	81.68	91.00	103.27	104.55	130.05	
Motor Vehicle Expenses	2.38	65.46	68.37	71.85	72.98	73.05	72.76	72.68	76.80	79.79	88.30	91.27	96.32	97.74	102.11	100.11	101.87	104.22	
TOBACCO & ALCOHOL	8.05	79.02	81.16	81.86	84.63	86.40	87.85	87.18	85.51	90.72	96.47	98.05	98.31	97.67	100.00	99.77	101.81	113.03	
Tobacco	1.80	57.10	57.75	57.58	64.18	69.84	71.58	73.19	72.96	82.06	90.65	92.77	93.72	94.68	96.88	98.91	102.09	142.27	
Alcohol	6.24	91.15	94.61	95.74	95.29	93.73	94.92	92.53	90.24	93.99	98.66	100.04	100.04	98.80	101.18	100.09	101.73	104.58	
MISCELLANEOUS	8.67	67.25	74.10	77.25	78.46	77.68	78.04	77.97	79.21	81.60	85.09	92.71	97.48	98.78	96.17	99.39	101.62	103.90	
Other Goods	5.00	71.01	75.27	75.98	76.45	74.85	75.30	75.23	76.35	78.80	82.95	92.93	98.31	99.73	96.30	99.84	101.20	101.01	
Other Services	3.67	65.25	76.95	84.70	87.06	87.63	87.80	87.80	89.64	91.82	92.92	91.91	94.44	95.34	95.68	97.72	102.20	107.82	
ALL GROUPS	100.00	70.37	75.51	77.52	78.20	77.74	77.41	77.99	79.04	81.53	88.63	91.61	93.44	94.26	96.57	99.82	102.23	110.36	
Underlying CPI										81.88	83.64	90.50	95.70	98.17	98.25	99.23	100.24	99.92	104.10

Table 3.4 Consumer Price Index with Average Prices of Selected Commodities

Calendar Year	Potato	Onion	Taro	Kumara	Banana	Orange	Beef Sausage	Tinned Corned Beef	Milk Powder	Short Grain Rice	Butter	e Loaf Bread	Eggs	White Sugar	Timber	Roofing Iron	Soap Powder	Cigarettes	Petrol
	kg	kg	kg	kg	dozen	dozen	450g	340g	900g	500g	454g	each	doz	6lb	metre	sheet	1kg	pkt of 20	litre
1975	0.31	0.35	0.46	0.29	0.27	0.32	0.63	0.84	1.46	0.35	0.51	0.09	0.86	1.50	1.31	2.82	0.99	0.38	0.20
1976	0.35	0.40	0.59	0.44	0.31	0.34	0.76	1.03	1.81	0.46	0.57	0.14	0.98	1.90	1.44	4.22	1.26	0.38	0.26
1977	0.31	0.51	0.79	0.57	0.34	0.50	0.86	1.22	2.02	0.56	0.75	0.17	1.04	2.03	1.57	5.33	1.27	0.49	0.28
1978	0.40	0.44	0.81	0.66	0.54	0.59	1.11	1.23	2.33	0.60	0.91	0.18	1.15	2.09	1.71	5.66	1.39	0.54	0.29
1979	0.42	0.37	0.88	0.59	0.60	0.61	1.31	1.53	2.33	0.72	1.01	0.20	1.27	2.31	2.03	5.69	1.56	0.60	0.35
1980	0.62	0.57	0.92	0.75	0.64	0.72	1.61	1.69	2.55	0.76	1.32	0.22	1.44	2.82	2.43	7.02	1.87	0.65	0.49
1981	0.79	1.34	1.01	0.79	0.70	0.95	2.02	1.82	3.74	0.94	1.80	0.36	1.68	4.23	3.22	8.90	2.29	0.76	0.64
1982	0.75	0.75	0.99	0.75	0.74	1.08	2.15	2.02	4.34	1.07	2.44	0.44	1.88	3.46	3.67	10.66	2.60	0.82	0.70
1983	0.75	0.57	1.14	0.88	1.00	1.15	2.28	2.09	4.50	0.96	2.55	0.46	2.27	3.29	3.54	11.17	2.72	1.01	0.74
1984	0.88	1.23	1.34	0.95	1.18	1.23	2.40	2.57	4.72	0.99	2.55	0.45	2.63	3.42	3.87	12.28	2.79	1.26	0.83
1985	1.10	1.23	1.43	0.99	1.27	1.50	2.70	2.77	5.02	1.16	2.63	0.44	2.95	3.54	4.82	13.92	3.18	1.62	0.95
1986	1.14	1.39	1.74	1.23	1.21	2.06	2.82	2.85	5.36	1.28	2.66	0.50	3.28	3.75	6.27	18.47	3.82	1.74	0.82
1987	1.25	1.50	1.91	1.50	1.58	2.37	3.11	3.19	5.54	1.12	2.81	0.58	3.76	3.87	6.43	19.97	4.17	2.37	0.89
1988	1.63	2.02	2.24	1.80	2.13	2.43	3.34	3.13	5.98	0.91	2.86	0.58	4.25	3.84	6.43	23.72	4.39	2.78	0.77
1989	2.14	2.22	2.65	1.68	1.65	2.25	3.67	3.06	7.06	0.86	2.96	1.82	4.33	2.15	5.83	11.17	4.77	2.92	0.81
1990	2.05	2.00	2.28	1.82	1.77	2.55	4.10	3.05	7.66	0.84	3.12	1.99	4.56	2.46	5.27	12.97	4.83	3.37	0.87
1991	2.01	1.98	2.09	2.00	1.89	3.09	4.30	3.04	7.77	0.85	3.12	2.00	4.76	2.61	4.81	14.21	4.82	3.69	0.95
1992	2.58	2.36	2.24	2.04	2.34	2.55	4.66	3.09	7.68	1.13	3.07	2.08	4.91	2.60	4.42	15.78	4.80	3.83	1.00
1993	2.27	2.33	2.72	2.65	2.46	5.10	5.09	3.48	7.94	1.17	3.13	2.16	5.05	2.66	5.18	16.74	5.01	3.87	1.06
1994	2.48	2.71	2.81	2.84	2.25	4.41	5.26	3.60	8.23	0.96	3.16	2.17	5.19	2.65	6.43	17.07	5.07	3.86	1.04
1995	1.90	1.98	2.71	2.00	2.25	3.87	5.26	3.61	8.14	0.90	3.16	2.18	5.24	2.50	5.94	16.57	5.02	4.30	1.05
1996	1.85	2.01	2.75	2.31	2.39	3.45	4.80	3.67	8.02	0.84	3.04	2.18	5.17	2.57	5.53	15.57	5.19	4.68	1.07
1997	1.85	1.86	2.69	2.26	1.96	3.30	4.55	3.72	8.27	0.84	3.03	2.34	5.13	2.64	5.01	14.04	5.26	4.81	1.13
1998	1.96	1.97	2.68	2.09	1.97	2.99	4.62	3.85	8.65	0.86	2.99	2.49	4.94	2.64	4.52	14.35	5.42	4.91	1.15
1999	1.81	1.69	2.33	2.19	1.80	2.33	4.33	3.75	8.49	0.78	2.79	2.51	4.79	2.64	4.09	14.52	5.56	4.90	1.16
2000	1.64	1.51	2.29	2.70	2.03	2.94	4.35	3.88	8.57	0.86	2.85	2.58	4.90	2.62	4.44	14.56	5.78	5.55	1.41
2001	1.71	1.79	3.02	2.85	2.19	3.70	4.60	4.47	8.87	0.98	2.95	2.84	5.11	2.66	4.46	15.27	6.02	6.09	1.57
2002	1.92	1.82	3.13	2.78	2.58	3.83	5.04	5.30	9.49	0.96	3.25	3.26	5.50	2.70	3.99	14.78	6.25	6.24	1.44
2003	1.87	1.78	3.37	2.60	3.12	4.02	5.47	5.40	9.48	1.03	3.33	3.40	5.68	2.70	3.91	14.90	6.38	6.28	1.48
2004	1.89	1.87	3.34	2.99	3.09	4.18	5.68	4.60	9.58	0.96	3.36	3.39	5.73	2.64	3.93	15.09	6.35	6.38	1.59
2005	1.64	1.54	3.47	3.35	3.00	4.78	5.76	4.43	9.59	0.98	3.38	3.47	5.83	2.59	3.93	15.97	6.28	6.49	1.77
2006	1.65	1.88	3.56	3.31	3.00	4.65	5.95	4.18	9.67	1.05	3.39	3.54	6.12	3.06	4.00	15.05	6.22	6.58	2.00
2007	1.82	1.95	3.61	3.42	3.11	4.83	6.08	4.14	9.95	1.14	3.52	3.55	6.00	3.38	4.27	15.83	6.09	7.66	2.07
2008	1.97	1.98	3.96	3.35	3.12	4.85	6.28	4.37	11.98	1.28	4.90	4.32	6.24	3.85	4.27	15.83	6.24	10.14	2.54

Overseas Trade

- ❑ The Cook Islands balance of trade for the year 2008 registered a deficit of \$207.1 million, up from \$137.7 million in the year to 2007. Although exports and imports fluctuated over time, imports still continued to dominate exports causing our balance of trade to deteriorate over the years.
- ❑ The current account balance for 2007 stood at \$17.9 million showing a negative movement of 38.0% over the revised current account balance year 2006. The tourist receipts continued to dominate in the services component showing an estimated contribution of \$145.3 million. This is attributed to the increase in the number of visitors in 2007 (up by 5.1%) despite of the decline in flight numbers in the same year.
- ❑ The total value of exports for the year 2008 stood at \$5.9 million, down from \$7.1 million in the year ending 2007. The bulk of the total exports in the year 2007 was from Fish, fresh or chilled, Pearls, and Noni (from Other exports category), with shares averaging from 44.5%, 30.2% and 14.0%. In 2008, Pearls took the lead followed by Fish, fresh or chilled, and Noni (from Other exports category) with a share of 34.8%, 33.8% and 18.9% respectively.
- ❑ The total value of imports for the year 2008 was \$213.0 million. This is an increase by 47.1% over previous year. In comparison over the year, the increase was mainly attributed from Mineral fuels (up \$31.3 million), followed by Machines, Transport & Equipment (up \$11.5 million), and Food & live animals (up \$5.0 million).

Balance of Trade

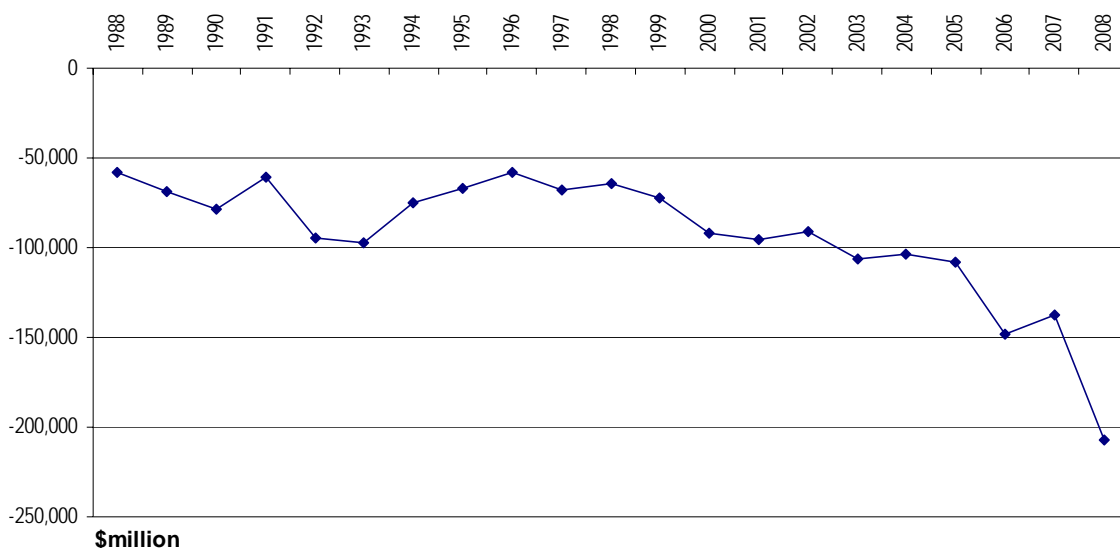


Table 4.1 Balance of Trade

Calendar Year	Balance of Trade		Exports		Imports	
	Total	%	F.O.B	% change	C.I.F.	% change
	('000)					
1980	-19,420	4.3	4,190	9.4	23,610	5.1
1981	-23,719	22.1	5,015	19.7	28,734	21.7
1982	-21,878	-7.8	4,976	-0.8	26,854	-6.5
1983	-30,196	38.0	4,889	-1.7	35,085	30.7
1984	-29,653	-1.8	6,515	33.3	36,168	3.1
1985	-43,435	46.5	6,223	-4.5	49,658	37.3
1986	-41,249	-5.0	9,060	45.6	50,309	1.3
1987	-42,763	3.7	11,956	32.0	54,719	8.8
1988	-57,865	35.3	6,627	-44.6	64,492	17.9
1989	-68,411	18.2	4,667	-29.6	73,078	13.3
1990	-78,158	14.2	8,172	75.1	86,330	18.1
1991	-60,365	-22.8	9,428	15.4	69,793	-19.2
1992	-94,779	57.0	6,030	-36.0	100,809	44.4
1993	-97,574	2.9	7,155	18.7	104,729	3.9
1994	-75,019	-23.1	6,962	-2.7	81,981	-21.7
1995	-66,910	-10.8	6,950	-0.2	73,860	-9.9
1996	-58,371	-12.8	4,581	-34.1	62,952	-14.8
1997	-68,062	16.6	4,270	-6.8	72,332	14.9
1998	-64,705	-4.9	6,011	40.8	70,716	-2.2
1999	-71,898	11.1	6,739	12.1	78,637	11.2
2000	-91,736	27.6	19,967	196.3	111,703	42.0
2001	-95,484	4.1	16,132	-19.2	111,616	-0.1
2002	-90,745	-5.0	10,928	-32.3	101,673	-8.9
2003	-106,433	17.3	14,588	33.5	121,021	19.0
2004	-103,607	-2.7	10,771	-26.2	114,378	-5.5
2005	-107,838	4.1	7,417	-31.1	115,255	0.8
2006	-148,156	37.4	5,420	-26.9	153,576	33.2
2007 (r)	-137,694	-7.1	7,052	30.1	144,746	-5.7
2008 (e)	-207,067	50.4	5,895	-16.4	212,962	47.1

Table 4.2 Balance of Payments

Calendar Year	Current Account Balance		Exports of Goods & Services		Imports of Goods & Services	
	Total	% change	F.O.B	% change	F.O.B	% change
	('000)					
1995	685	-	86,745	-	(86,060)	-
1996	8,008	1,069.2	87,102	0.4	(79,094)	-8.1
1997	1,228	-84.7	92,000	5.6	(90,772)	14.8
1998	3,998	225.4	94,825	3.1	(90,827)	0.1
1999	13,750	243.9	125,905	32.8	(112,155)	23.5
2000	19,294	40.3	168,982	34.2	(149,689)	33.5
2001	33,797	75.2	185,997	10.1	(152,200)	1.7
2002	29,536	-12.6	173,961	-6.5	(144,425)	-5.1
2003	25,658	-13.1	187,210	7.6	(161,552)	11.9
2004	18,134	-29.3	176,841	-5.5	(158,707)	-1.8
2005	29,964	65.2	191,439	8.3	(161,475)	1.7
2006	28,868	-3.7	224,549	17.3	(195,681)	21.2
2007 (p)	17,909	-38.0	268,811	19.7	(250,902)	28.2
2008 (p)	13,210	-26.2	266,569	-0.8	(253,359)	1.0

Table 4.3 Value of Principal Exports

Calendar Year	Total Exports	Fruits & Vegetables	Live Fish	Fish Fresh or Chilled	Pearls	Pearl Shells	Clothing & Footwear	Maire	Other Exports
	('000)								
1980	4,190	918	-	-	-	317	1,292	-	1,663
1981	5,015	1,412	-	-	-	323	2,085	19	1,176
1982	4,976	1,883	-	-	-	165	2,012	28	888
1983	4,889	1,604	-	-	-	140	2,645	10	490
1984	6,515	1,896	-	-	-	633	2,804	7	1,175
1985	6,223	2,452	-	-	-	347	2,437	39	948
1986	9,060	1,606	-	-	-	641	5,783	51	979
1987	11,956	1,617	-	-	-	1,149	8,201	8	981
1988	6,627	2,428	-	-	-	543	2,936	-	720
1989	4,667	1,810	54	-	596	1,110	578	-	519
1990	8,172	1,907	161	-	4,367	566	335	-	836
1991	9,428	1,369	214	-	6,663	411	54	140	577
1992	6,030	1,622	206	-	3,148	490	22	178	364
1993	7,155	1,697	164	-	3,791	251	35	202	1,015
1994	6,962	916	265	382	4,184	102	259	200	654
1995	6,950	966	169	1,067	3,750	2	346	94	556
1996	4,581	1,319	152	250	1,473	406	279	104	598
1997	4,270	425	132	-	3,036	225	121	39	292
1998	6,011	415	214	-	5,033	2	166	42	139
1999	6,739	337	138	2	5,342	34	253	36	597
2000	19,967	351	252	-	18,395	2	165	47	755
2001	16,132	249	100	-	14,591	4	281	34	873
2002	10,928	163	211	2,334	6,405	6	322	36	1,451
2003	14,588	620	281	8,258	2,843	49	229	33	2,275
2004	10,771	129	135	2,898	3,177	37	204	37	4,154
2005	7,417	32	111	3,381	1,646	3	176	18	2,050
2006	5,420	263	141	1,066	2,044	3	136	30	1,737
2007	7,052	117	62	3,141	2,129	278	50	18	1,257
2008 (p)	5,895	23	205	1,994	2,053	147	-	14	1,459

Table 4.4 Value of Exports by SITC Section

Calendar Year	Total Exports	Food & Live Animals	Crude materials	Basic Mfrs	Misc. mfd goods	Other Exports
			('000)			
1980	4,190	1,068	505	339	1,715	563
1981	5,015	1,456	691	-	2,090	778
1982	4,976	1,886	626	35	2,035	394
1983	4,889	1,606	465	83	2,709	26
1984	6,515	1,907	1,653	111	2,807	37
1985	6,223	2,540	1,006	19	2,510	148
1986	9,060	1,773	932	49	5,917	389
1987	11,956	1,675	1,229	72	8,435	545
1988	6,627	2,532	545	12	2,965	573
1989	4,667	1,891	1,113	504	644	515
1990	8,172	2,083	566	4,389	526	608
1991	9,428	1,588	416	6,635	714	75
1992	6,030	1,849	228	3,186	669	98
1993	7,155	1,894	206	3,833	907	315
1994	6,962	1,571	220	4,189	774	208
1995	6,950	2,233	99	3,901	687	30
1996	4,581	1,749	283	1,495	772	282
1997	4,270	580	67	3,039	524	60
1998	6,011	678	67	5,056	203	7
1999	6,739	566	238	5,365	569	1
2000	19,967	731	51	18,438	735	12
2001	16,132	861	160	14,612	498	1
2002	10,928	3,561	42	6,428	896	1
2003	14,588	10,926	163	2,843	656	-
2004	10,771	6,736	62	3,271	701	1
2005	7,417	5,366	171	1,643	235	2
2006	5,420	2,872	78	2,262	203	5
2007	7,052	4,309	274	2,247	222	-
2008 (p)	5,895	3,336	153	2,256	150	-
	Percentage change over the previous year					
1981	19.7	36.3	36.8	-100.0	21.9	38.2
1982	-0.8	29.5	-9.4	...	-2.6	-49.4
1983	-1.7	-14.8	-25.7	137.1	33.1	-93.4
1984	33.3	18.7	255.5	33.7	3.6	42.3
1985	-4.5	33.2	-39.1	-82.9	-10.6	300.0
1986	45.6	-30.2	-7.4	157.9	135.7	162.8
1987	32.0	-5.5	31.9	46.9	42.6	40.1
1988	-44.6	51.2	-55.7	-83.3	-64.8	5.1
1989	-29.6	-25.3	104.2	4100.0	-78.3	-10.1
1990	75.1	10.2	-49.1	770.8	-18.3	18.1
1991	15.4	-23.8	-26.5	51.2	35.7	-87.7
1992	-36.0	16.4	-45.2	-52.0	-6.3	30.7
1993	18.7	2.4	-9.6	20.3	35.6	221.4
1994	-2.7	-17.1	6.8	9.3	-14.7	-34.0
1995	-0.2	42.1	-55.0	-6.9	-11.2	-85.6
1996	-38.6	-74.0	-32.3	-22.1	-23.7	100.0
1997	-6.8	-66.8	-76.3	103.3	-32.1	-78.7
1998	40.8	16.9	0.0	66.4	-61.3	-88.3
1999	12.1	-16.5	255.2	6.1	180.3	-85.7
2000	196.3	29.2	-78.6	243.7	29.2	1100.0
2001	-19.2	17.8	213.7	-20.8	-32.2	-91.7
2002	-32.3	313.6	-73.8	-56.0	79.9	0.0
2003	33.5	206.8	288.1	-55.8	-26.8	-
2004	-26.2	-38.3	-62.0	15.1	6.9	-
2005	-31.1	-20.3	175.8	-49.8	-66.5	100.0
2006	-26.9	-46.5	-54.4	37.7	-13.6	150.0
2007	30.1	50.0	251.3	-0.7	9.4	-
2008 (p)	-16.4	-22.6	-44.2	0.4	-32.4	-

Table 4.5 Value of Imports by SITC Section

Calendar Year	Total Imports	Food & Live Animals	Beverages & Tobacco	Crude materials	Minerals fuels, etc.	Chemicals	Basic Mfrs.	Machines transport & equip.	Misc. mfd. goods	Other
	('000)									
1980	23,610	5,270	1,531	509	2,428	1,430	4,718	4,382	3,122	220
1981	28,734	6,009	1,416	633	5,345	1,687	5,343	3,690	4,392	219
1982	26,854	5,714	1,329	999	2,256	1,851	5,760	5,265	3,530	150
1983	35,085	6,917	1,666	537	5,900	1,730	6,509	6,800	3,872	1,154
1984	36,168	7,729	2,033	770	3,447	2,459	7,512	6,937	4,901	380
1985	49,658	10,260	2,871	978	6,287	3,303	9,784	9,143	6,600	432
1986	50,309	10,285	3,090	1,097	6,020	3,766	9,849	8,723	7,084	395
1987	54,719	11,862	3,341	1,192	6,490	3,967	9,143	10,440	7,770	514
1988	64,492	13,318	3,826	1,342	7,750	4,536	12,757	11,628	8,821	514
1989	73,078	15,079	4,370	1,548	8,617	5,235	14,462	13,074	10,086	607
1990	86,330	12,360	3,804	2,908	2,685	9,590	25,647	20,227	8,870	239
1991	69,793	13,681	4,215	2,124	4,149	4,182	13,463	18,311	9,364	304
1992	100,809	17,302	4,716	4,086	3,909	5,672	25,167	25,947	13,286	724
1993	104,729	18,015	5,189	4,646	4,493	6,652	18,966	28,262	18,050	456
1994	81,981	17,873	4,668	2,903	4,996	6,597	12,335	20,854	10,796	959
1995	73,860	19,206	4,326	1,868	8,922	4,795	10,266	13,556	10,542	379
1996	62,952	16,702	3,176	1,335	8,450	4,069	8,537	11,457	8,947	279
1997	72,332	17,635	4,112	1,666	8,572	4,885	10,041	15,412	9,513	496
1998	70,716	17,501	2,526	1,722	9,043	4,054	9,899	16,393	8,728	850
1999	78,637	19,309	2,206	1,655	8,564	4,945	11,195	19,750	10,630	383
2000	111,703	20,047	2,615	3,094	19,677	6,502	15,752	29,605	14,066	343
2001	111,616	22,927	3,467	3,186	11,071	6,915	17,334	29,215	16,693	808
2002	101,673	23,232	2,317	2,875	6,781	7,301	17,871	26,906	14,071	319
2003	121,021	25,077	2,897	4,236	5,495	7,513	20,458	29,220	15,697	428
2004	114,378	26,509	4,557	3,508	9,080	7,692	20,851	26,713	15,104	364
2005	115,255	27,866	4,891	3,553	10,452	7,772	20,992	24,463	14,877	389
2006	153,576	29,914	5,383	3,702	34,137	7,935	21,262	34,799	15,944	500
2007 (r)	144,746	27,795	5,786	4,468	26,619	8,699	23,386	30,320	17,116	557
2008 (e)	212,962	32,779	9,327	4,724	57,888	9,281	28,924	41,872	26,491	1,676
	Percentage change over the previous year									
1981	21.7	14.0	-7.5	24.4	120.1	18.0	13.2	-15.8	40.7	-0.5
1982	-6.5	-4.9	-6.1	57.8	-57.8	9.7	7.8	42.7	-19.6	-31.5
1983	30.7	21.1	25.4	-46.2	161.5	-6.5	13.0	29.2	9.7	669.3
1984	3.1	11.7	22.0	43.4	-41.6	42.1	15.4	2.0	26.6	-67.1
1985	37.3	32.7	41.2	27.0	82.4	34.3	30.2	31.8	34.7	13.7
1986	1.3	0.2	7.6	12.2	-4.2	14.0	0.7	-4.6	7.3	-8.6
1987	8.8	15.3	8.1	8.7	7.8	5.3	-7.2	19.7	9.7	30.1
1988	17.9	12.3	14.5	12.6	19.4	14.3	39.5	11.4	13.5	0.0
1989	13.3	13.2	14.2	15.4	11.2	15.4	13.4	12.4	14.3	18.1
1990	18.1	-18.0	-13.0	87.9	-68.8	83.2	77.3	54.7	-12.1	-60.6
1991	-19.2	10.7	10.8	-27.0	54.5	-56.4	-47.5	-9.5	5.6	27.2
1992	44.4	26.5	11.9	92.4	-5.8	35.6	86.9	41.7	41.9	138.2
1993	3.9	4.1	10.0	13.7	14.9	17.3	-24.6	8.9	35.9	-37.0
1994	-21.7	-0.8	-10.0	-37.5	11.2	-0.8	-35.0	-26.2	-40.2	110.3
1995	-9.9	7.5	-7.3	-35.7	78.6	-27.3	-16.8	-35.0	-2.4	-60.5
1996	-14.8	-13.0	-26.6	-28.5	-5.3	-15.1	-16.8	-15.5	-15.1	-26.4
1997	14.9	5.6	29.5	24.8	1.4	20.1	17.6	34.5	6.3	77.8
1998	-2.2	-0.8	-38.6	3.4	5.5	-17.0	-1.4	6.4	-8.3	71.4
1999	11.2	10.3	-12.7	-3.9	-5.3	22.0	13.1	20.5	21.8	-54.9
2000	42.0	3.8	18.5	86.9	129.8	31.5	40.7	49.9	32.3	-10.3
2001	-0.1	14.4	32.6	3.0	-43.7	6.4	10.0	-1.3	18.7	135.3
2002	-8.9	1.3	-33.2	-9.8	-38.7	5.6	3.1	-7.9	-15.7	-60.5
2003	19.0	7.9	25.0	47.3	-19.0	2.9	14.5	45.8	11.6	34.2
2004	-5.5	5.7	57.3	-17.2	65.2	2.4	1.9	-31.9	-3.8	-15.0
2005	0.8	5.1	7.3	1.3	15.1	1.0	0.7	-8.4	-1.5	6.9
2006	33.2	7.3	10.1	4.2	226.6	2.1	1.3	42.3	7.2	28.5
2007 (r)	-5.7	-7.1	7.5	20.7	-22.0	9.6	10.0	-12.9	7.4	11.4
2008 (e)	47.1	17.9	61.2	5.7	117.5	6.7	23.7	38.1	54.8	200.9

Table 4.6 Value of Imports by Country of Purchase

Calendar Year	Total Imports	Australia	Fiji	Italy	Japan	New Zealand	United States	Other Countries
	('000)							
1994	81,981	5,852	5,977	3	2,189	59,650	2,674	5,636
1995	73,860	5,309	7,992	162	2,120	52,396	2,592	3,289
1996	62,952	4,344	8,774	21	839	45,281	1,574	2,119
1997	72,332	4,845	7,129	13	1,767	54,405	1,697	2,476
1998	70,716	6,896	8,313	90	2,017	48,242	2,474	2,684
1999	78,637	6,454	8,212	23	3,699	54,209	1,799	4,241
2000	111,703	6,675	20,657	175	2,144	67,666	9,558	4,828
2001	111,616	6,804	12,453	51	1,382	83,527	1,547	5,852
2002	101,673	7,044	6,515	45	1,399	80,519	1,653	4,498
2003	121,021	7,954	5,873	103	3,444	94,665	2,956	6,026
2004	114,378	4,758	7,671	66	1,863	93,037	2,420	4,563
2005	115,255	6,843	8,137	39	2,208	90,987	1,170	5,871
2006	153,576	8,098	26,893	88	2,552	107,376	1,302	7,267
2007 (r)	144,746	8,219	20,296	105	2,516	102,125	1,999	9,486
2008 (e)	212,962	11,543	36,501	-	4,193	142,169	3,679	14,877
	Percentage change over the previous year							
1995	-9.9	-9.3	33.7	5300.0	-3.2	-12.2	-3.1	-41.6
1996	-14.8	-18.2	9.8	-87.0	-60.4	-13.6	-39.3	-35.6
1997	14.9	11.5	-18.7	-38.1	110.6	20.1	7.8	16.8
1998	-2.2	42.3	16.6	592.3	14.1	-11.3	45.8	8.4
1999	11.2	-6.4	-1.2	-74.4	83.4	12.4	-27.3	58.0
2000	42.0	3.4	151.5	660.9	-42.0	24.8	431.3	13.8
2001	-0.1	1.9	-39.7	-70.9	-35.5	23.4	-83.8	21.2
2002	-8.9	3.5	-47.7	-11.8	1.2	-3.6	6.9	-23.1
2003	19.0	12.9	-9.9	128.9	146.2	17.6	78.8	34.0
2004	-5.5	-40.2	30.6	-35.9	-45.9	-1.7	-18.1	-24.3
2005	0.8	43.8	6.1	-40.9	18.5	-2.2	-51.7	28.7
2006	33.2	18.3	230.5	125.6	15.6	18.0	11.3	23.8
2007 (r)	-5.7	1.5	-24.5	19.3	-1.4	-4.9	53.5	30.5
2008 (e)	47.1	40.4	79.8	-	66.7	39.2	84.0	56.8

Table 4.7 Total Taxes generated from Imports

Calendar Year	Total Imports	Total Taxes	Levies	% change	Duties	% change	Private Import Tax and Vat (i)	% change
	('000)							
1994	81,981	7,415	6,828	-7.1	3.0	50.0	584	19.9
1995	73,860	8,305	7,875	15.3	2.0	-33.3	428	-26.7
1996	62,952	7,532	7,127	-9.5	0.8	-60.0	405	-5.4
1997	72,332	13,912	8,444	18.5	2.7	237.5	5,468	1,250.1
1998	70,716	17,886	8,337	-1.3	2.9	7.4	9,548	74.6
1999	78,637	18,779	8,306	-0.4	5.5	89.7	10,468	9.6
2000	111,703	24,098	9,167	10.4	6.2	12.7	14,925	42.6
2001	111,616	26,510	11,564	26.1	2.4	-61.3	14,946	0.1
2002	101,673	23,122	9,409	-18.6	8.0	233.3	13,705	-8.3
2003	121,021	26,973	10,558	12.2	1.1	-86.3	16,414	19.8
2004	114,378	26,417	10,600	0.4	5.1	363.6	15,812	-3.7
2005	115,255	27,523	11,745	10.8	3.3	-35.3	15,774	-0.2
2006	153,576	29,987	9,323	-20.6	5.6	69.7	20,659	31.0
2007 (r)	144,746	22,614	5,664	-39.2	4.2	-25.0	16,946	-18.0
2008 (e)	212,962	26,931	5,988	5.7	4.0	-4.8	20,939	23.6

Note: (i) From July 1997 Value Added Tax (VAT) were collected at the boarder and prior to that was Private import

Public Sector Accounts

- ❑ Total Revenue of the Public sector for the June 2009 year was estimated to be \$116.6 million, Taxation revenue made the most significant contribution of 69.4% to the overall total revenue.
- ❑ Total expenditure for June 2009 was \$124.3 million a increase of 29.9%, or \$28.6 million when compared to the previous fiscal year. Other Purchases of Goods and Services made up 42.3% (\$52.6 million) followed by Wages and Salaries 33.2% (\$41.3 million) and capital expenditure 12.1%(\$15.0 million).
- ❑ On a functional basis, Other economic services made up 36.2% of governments' budget for June 2009 fiscal year, General Public Services made up 22.4% followed by Education with 12.1% and Health 10.6% while all other crown functions made up 18.7%.

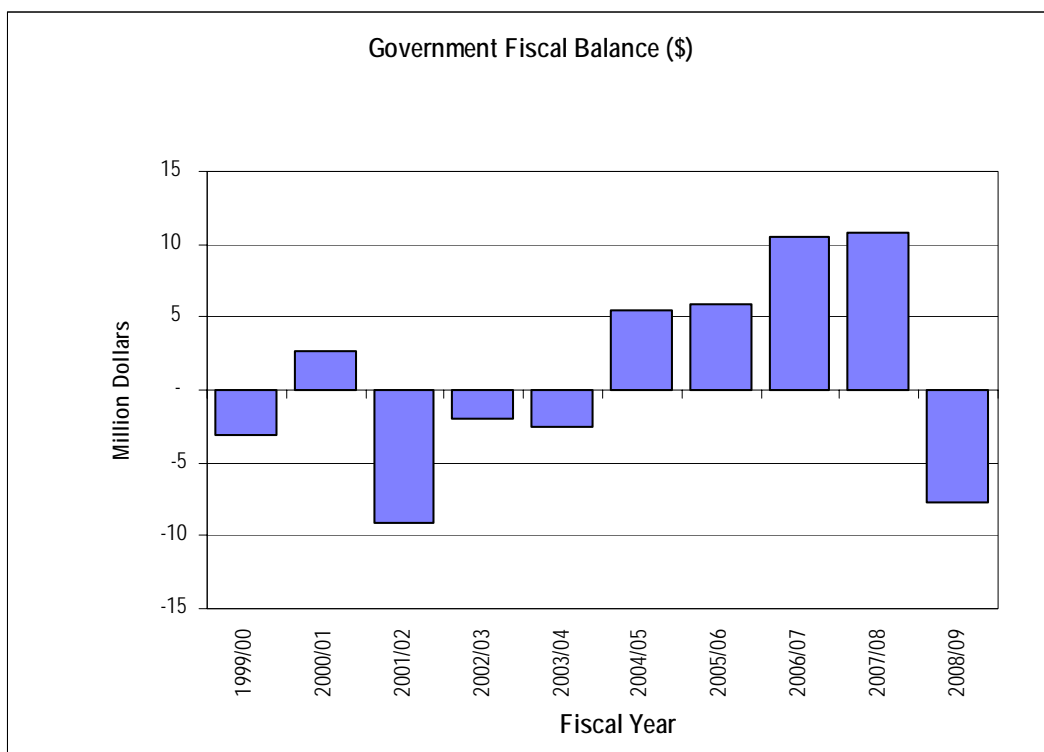


Table 5.1 Government Overall Total Revenue and Expenditure

Fiscal Year ⁽¹⁾	Revenue				Expenditure				Surplus/ (Deficit)
	Total	Tax	Non tax incl. Capital	Grants	Total	Goods & Services	Subsidies & Other Transfers	Capital	
	(\$000)								
1986/87	34,694	21,369	3,075	10,251	35,238	27,775	4,804	2,659	(544)
1987/88	43,072	29,338	3,053	10,682	40,279	33,201	4,862	2,216	2,793
1988/89	41,278	29,510	2,527	9,241	43,440	36,671	5,206	1,563	(2,162)
1989/90	45,985	33,327	3,730	8,928	46,996	37,870	6,697	2,428	(1,011)
1990/91 ⁽²⁾	60,204	45,558	3,552	11,093	62,096	49,913	9,003	3,181	(1,892)
1991/92	57,872	46,636	1,602	9,634	62,648	49,092	7,779	5,777	(4,776)
1992/93	61,304	49,390	2,958	8,956	60,806	50,799	7,362	2,645	498
1993/94	67,114	55,037	3,627	8,450	63,989	52,052	9,245	2,693	3,124
1994/95	64,727	53,333	3,294	8,100	68,715	52,807	11,073	4,835	(3,988)
1995/96	56,127	45,104	3,323	7,700	66,834	53,170	11,235	2,429	(10,706)
1996/97	55,565	37,408	6,565	11,593	55,863	45,284	7,781	2,799	(298)
1997/98	54,734	33,774	10,777	10,183	58,325	43,642	6,547	8,137	(3,591)
1998/99	49,926	37,996	7,478	4,452	53,587	39,320	6,742	7,525	(3,661)
1999/00	59,470	44,981	9,392	5,097	62,583	48,112	6,547	7,924	(3,113)
2000/01	78,111	55,244	10,914	11,954	75,444	60,472	7,066	7,906	2,668
2001/02	74,376	60,284	6,734	7,359	83,538	67,258	7,082	9,199	(9,162)
2002/03	79,248	60,753	8,495	10,000	81,175	65,831	8,194	7,151	(1,927)
2003/04 (r)	81,379	60,077	11,262	10,040	83,906	68,911	8,603	6,392	(2,527)
2004/05 (p)	91,850	65,559	10,540	15,751	86,396	66,969	9,194	10,233	5,454
2005/06 (p)	100,770	67,649	11,407	21,714	94,880	70,597	10,186	14,097	5,890
2006/07 (p)	103,226	69,685	12,270	21,271	92,767	70,476	10,803	11,489	10,459
2007/08 (p)	106,561	77,161	12,501	16,899	95,709	74,812	11,685	9,212	10,852
2008/09 (p)	116,665	80,963	14,528	21,174	124,355	95,537	13,793	15,025	(7,690)
	Percentage Composition								
1986/87	100.0	61.6	8.9	29.5	100.0	78.8	13.6	7.5	..
1987/88	100.0	68.1	7.1	24.8	100.0	82.4	12.1	5.5	..
1988/89	100.0	71.5	6.1	22.4	100.0	84.4	12.0	3.6	..
1989/90	100.0	72.5	8.1	19.4	100.0	80.6	14.3	5.2	..
1990/91 ⁽²⁾	100.0	75.7	5.9	18.4	100.0	80.4	14.5	5.1	..
1991/92	100.0	80.6	2.8	16.6	100.0	78.4	12.4	9.2	..
1992/93	100.0	80.6	4.8	14.6	100.0	83.5	12.1	4.3	..
1993/94	100.0	82.0	5.4	12.6	100.0	81.3	14.4	4.2	..
1994/95	100.0	82.4	5.1	12.5	100.0	76.8	16.1	7.0	..
1995/96	100.0	80.4	5.9	13.7	100.0	79.6	16.8	3.6	..
1996/97	100.0	67.3	11.8	20.9	100.0	81.1	13.9	5.0	..
1997/98	100.0	61.7	19.7	18.6	100.0	74.8	11.2	14.0	..
1998/99	100.0	76.1	15.0	8.9	100.0	73.4	12.6	14.0	..
1999/00	100.0	75.6	15.8	8.6	100.0	76.9	10.5	12.7	..
2000/01	100.0	70.7	14.0	15.3	100.0	80.2	9.4	10.5	..
2001/02	100.0	81.1	9.1	9.9	100.0	80.5	8.5	11.0	..
2002/03	100.0	76.7	10.7	12.6	100.0	81.1	10.1	8.8	..
2003/04 (r)	100.0	73.8	13.8	12.3	100.0	82.1	10.3	7.6	..
2004/05 (p)	100.0	71.4	11.5	17.1	100.0	77.5	10.6	11.8	..
2005/06 (p)	100.0	67.1	11.3	21.5	100.0	74.4	10.7	14.9	..
2006/07 (p)	100.0	67.5	11.9	20.6	100.0	76.0	11.6	12.4	..
2007/08 (p)	100.0	72.4	11.7	15.9	100.0	78.2	12.2	9.6	..
2008/09 (p)	100.0	69.4	12.5	18.1	100.0	76.8	11.1	12.1	..

Source: Government Accounts including Budget Appropriation

Note: ⁽¹⁾ Year ended 31 March up to 1990 and year ended 30 June after 1990

⁽²⁾ 15 month period

Table 5.2 Government Current Revenue By Type

Fiscal	Total Revenue	Taxes on Income	Domestic Taxes	Taxes on International Trade	Entrepreneurial Property Income	Fees, Fines and Charges	Grants
	(\$000)						
1986/87	34,694	8,003	6,723	6,643	2,226	849	10,251
1987/88	43,072	12,179	9,715	7,444	2,093	960	10,682
1988/89	41,278	11,623	11,402	6,485	1,659	869	9,241
1989/90	45,985	14,500	12,230	6,597	2,756	975	8,928
1990/91 ⁽²⁾	60,204	21,288	15,855	8,415	2,028	1,525	11,093
1991/92	57,872	19,767	18,563	8,306	567	1,035	9,634
1992/93	61,304	21,340	19,296	8,754	1,740	1,218	8,956
1993/94	67,114	20,802	24,248	9,987	773	2,854	8,450
1994/95	64,727	20,727	22,215	10,391	1,375	1,919	8,100
1995/96	56,127	18,196	18,419	8,490	897	2,426	7,700
1996/97	55,565	14,802	14,388	8,217	3,808	2,757	11,593
1997/98	54,734	8,944	15,590	9,240	4,308	6,469	10,183
1998/99	49,926	11,934	17,363	8,700	1,942	5,536	4,452
1999/00	59,470	14,633	19,659	10,689	2,990	6,402	5,097
2000/01	78,111	17,471	24,497	13,276	4,283	6,631	11,954
2001/02	74,376	21,557	25,764	12,963	3,752	2,982	7,359
2002/03	79,248	20,179	26,660	13,914	5,175	3,320	10,000
2003/04 (r)	81,379	19,400	27,307	13,370	4,620	6,642	10,040
2004/05 (p)	91,850	21,000	29,309	15,250	4,499	6,041	15,751
2005/06 (p)	100,770	22,600	28,257	16,792	5,071	6,336	21,714
2006/07 (p)	103,226	28,000	30,926	10,759	5,640	6,630	21,271
2007/08 (p)	106,561	31,808	34,484	10,869	5,159	7,342	16,899
2008/09 (p)	116,665	32,593	34,781	13,589	6,671	7,857	21,174
	Percentage Contribution						
1986/87	100.0	23.1	19.4	19.1	6.4	2.4	29.5
1987/88	100.0	28.3	22.6	17.3	4.9	2.2	24.8
1988/89	100.0	28.2	27.6	15.7	4.0	2.1	22.4
1989/90	100.0	31.5	26.6	14.3	6.0	2.1	19.4
1990/91 ⁽²⁾	100.0	35.4	26.3	14.0	3.4	2.5	18.4
1991/92	100.0	34.2	32.1	14.4	1.0	1.8	16.6
1992/93	100.0	34.8	31.5	14.3	2.8	2.0	14.6
1993/94	100.0	31.0	36.1	14.9	1.2	4.3	12.6
1994/95	100.0	32.0	34.3	16.1	2.1	3.0	12.5
1995/96	100.0	32.4	32.8	15.1	1.6	4.3	13.7
1996/97	100.0	26.6	25.9	14.8	6.9	5.0	20.9
1997/98	100.0	16.3	28.5	16.9	7.9	11.8	18.6
1998/99	100.0	23.9	34.8	17.4	3.9	11.1	8.9
1999/00	100.0	24.6	33.1	18.0	5.0	10.8	8.6
2000/01	100.0	22.4	31.4	17.0	5.5	8.5	15.3
2001/02	100.0	29.0	34.6	17.4	5.0	4.0	9.9
2002/03	100.0	25.5	33.6	17.6	6.5	4.2	12.6
2003/04 (r)	100.0	23.8	33.6	16.4	5.7	8.2	12.3
2004/05 (p)	100.0	22.9	31.9	16.6	4.9	6.6	17.1
2005/06 (p)	100.0	22.4	28.0	16.7	5.0	6.3	21.5
2006/07 (p)	100.0	27.1	30.0	10.4	5.5	6.4	20.6
2007/08 (p)	100.0	29.8	32.4	10.2	4.8	6.9	15.9
2008/09 (p)	100.0	27.9	29.8	11.6	5.7	6.7	18.1

Source: Government Accounts including Budget Appropriation

Note: ⁽¹⁾ Year ended 31 March up to 1990 and year ended 30 June after 1990

⁽²⁾ 15 month period

Table 5.3 Government Total Expenditure By Type

Fiscal Year(1)	Total Expenditure	Wages and Salaries	Employer Contributions	Other Purchases of Goods and Services	Subsidies	Transfers to Households	Transfers Abroad	Capital Expenditure & Transfers
	(\$000)							
1986/87	35,238	17,558	1,489	8,729	2,303	1,928	574	2,659
1987/88	40,279	20,899	1,850	10,452	2,359	2,055	448	2,216
1988/89	43,440	23,896	1,974	10,802	2,306	2,534	366	1,563
1989/90	46,996	25,422	1,566	10,883	2,329	3,804	564	2,428
1990/91 ⁽²⁾	62,096	33,421	2,006	14,486	3,613	4,905	485	3,181
1991/92	62,648	31,022	1,715	16,355	3,083	4,285	411	5,777
1992/93	60,806	32,060	2,422	16,317	2,835	3,909	618	2,645
1993/94	63,989	36,119	1,908	14,025	2,856	4,762	1,627	2,693
1994/95	68,715	38,612	1,289	12,906	3,830	6,413	830	4,835
1995/96	66,834	35,787	1,632	15,751	2,078	8,432	725	2,429
1996/97	55,863	22,628	1,204	21,452	-	7,056	725	2,799
1997/98	58,325	22,712	1,304	19,626	-	5,822	725	8,137
1998/99	53,587	22,142	835	16,343	-	6,017	725	7,525
1999/00	62,583	23,604	775	23,732	13	6,083	451	7,924
2000/01	75,444	23,604	775	36,093	112	6,372	582	7,906
2001/02	83,538	29,206	770	37,282	4	6,623	455	9,199
2002/03	81,175	30,568	1,223	34,040	5	7,818	370	7,151
2003/04 (r)	83,906	31,756	1,045	36,110	16	8,137	450	6,392
2004/05 (p)	86,396	33,345	1,334	32,290	16	8,693	485	10,233
2005/06 (p)	94,880	34,281	1,371	34,945	40	9,673	473	14,097
2006/07 (p)	92,767	35,150	1,406	33,920	40	10,270	493	11,489
2007/08 (p)	95,709	37,065	1,483	36,264	20	11,167	498	9,212
2008/09 (p)	124,355	41,314	1,653	52,570	318	12,992	483	15,025
	Percentage Contribution							
1986/87	100.0	49.8	4.2	24.8	6.5	5.5	1.6	7.5
1987/88	100.0	51.9	4.6	25.9	5.9	5.1	1.1	5.5
1988/89	100.0	55.0	4.5	24.9	5.3	5.8	0.8	3.6
1989/90	100.0	54.1	3.3	23.2	5.0	8.1	1.2	5.2
1990/91 ⁽²⁾	100.0	53.8	3.2	23.3	5.8	7.9	0.8	5.1
1991/92	100.0	49.5	2.7	26.1	4.9	6.8	0.7	9.2
1992/93	100.0	52.7	4.0	26.8	4.7	6.4	1.0	4.3
1993/94	100.0	56.4	3.0	21.9	4.5	7.4	2.5	4.2
1994/95	100.0	56.2	1.9	18.8	5.6	9.3	1.2	7.0
1995/96	100.0	53.5	2.4	23.6	3.1	12.6	1.1	3.6
1996/97	100.0	40.5	2.2	38.4	0.0	12.6	1.3	5.0
1997/98	100.0	38.9	2.2	33.6	0.0	10.0	1.2	14.0
1998/99	100.0	41.3	1.6	30.5	0.0	11.2	1.4	14.0
1999/00	100.0	37.7	1.2	37.9	0.0	9.7	0.7	12.7
2000/01	100.0	31.3	1.0	47.8	0.1	8.4	0.8	10.5
2001/02	100.0	35.0	0.9	44.6	0.0	7.9	0.5	11.0
2002/03	100.0	37.7	1.5	41.9	0.0	9.6	0.5	8.8
2003/04 (r)	100.0	37.8	1.2	43.0	0.0	9.7	0.5	7.6
2004/05 (p)	100.0	38.6	1.5	37.4	0.0	10.1	0.6	11.8
2005/06 (p)	100.0	36.1	1.4	36.8	0.0	10.2	0.5	14.9
2006/07 (p)	100.0	37.9	1.5	36.6	0.0	11.1	0.5	12.4
2007/08 (p)	100.0	38.7	1.5	37.9	0.0	11.7	0.5	9.6
2008/09 (p)	100.0	33.2	1.3	42.3	0.3	10.4	0.4	12.1

Source: Government Accounts including Budget Appropriation

Note: ⁽¹⁾ Year ended 31 March up to 1990 and year ended 30 June after 1990

⁽²⁾ 15 month period

Table 5.4 Government Crown Expenditure By Function

Fiscal Year(1)	Total	General Public Services	Public Order & Safety	Education	Health	Housing & Community Services	Recreation & Culture	Agriculture, Forestry & Fishing	Other Economic Services
	(\$000)								
1986/87	35,238	11,978	2,173	4,585	4,027	2,901	-	1,841	7,733
1987/88	40,279	17,355	2,801	5,095	4,419	3,199	-	2,308	5,103
1988/89	43,440	14,983	3,024	5,716	4,782	3,708	-	2,715	8,513
1989/90	46,996	14,920	3,105	6,279	5,354	4,949	852	2,993	8,545
1990/91 ⁽²⁾	62,096	22,131	4,052	7,732	6,633	7,238	1,733	3,822	8,755
1991/92	62,648	17,393	3,806	7,419	6,000	6,491	3,911	3,496	14,131
1992/93	60,806	19,580	4,300	8,372	6,800	7,729	9,361	4,300	363
1993/94	63,989	25,501	4,412	10,666	6,460	9,093	2,442	5,853	(436)
1994/95	68,715	19,305	3,985	8,249	6,819	9,207	3,442	4,988	12,721
1995/96	66,834	18,604	3,317	6,331	5,932	9,972	1,698	3,941	17,040
1996/97	55,863	12,013	2,767	4,909	4,678	8,055	464	2,318	20,659
1997/98	58,325	13,473	2,974	5,765	5,380	6,546	409	1,586	22,192
1998/99	53,587	12,636	3,445	7,995	4,845	6,656	373	1,350	16,286
1999/00	62,583	9,244	3,798	6,523	6,195	6,637	463	1,602	28,121
2000/01	75,444	15,985	4,455	9,334	9,832	7,159	592	1,790	26,298
2001/02	83,538	18,733	4,614	8,087	8,237	12,401	678	1,397	29,391
2002/03	81,175	15,653	4,205	11,670	9,516	7,505	690	3,585	28,352
2003/04 (r)	83,906	14,966	3,926	12,236	9,430	8,109	672	2,181	32,386
2004/05 (p)	86,396	20,088	4,153	13,651	11,414	9,125	834	2,764	24,366
2005/06 (p)	94,880	23,537	4,307	14,758	10,865	9,424	664	3,159	28,166
2006/07 (p)	92,767	23,212	4,476	14,792	11,542	9,803	699	3,433	24,810
2007/08 (p)	95,709	22,194	6,875	14,713	11,963	13,220	670	4,112	21,960
2008/09 (p)	124,355	27,805	6,726	14,997	13,149	11,381	650	4,644	45,003
	Percentage Composition								
1986/87	100.0	34.0	6.2	13.0	11.4	8.2	-	5.2	21.9
1987/88	100.0	43.1	7.0	12.6	11.0	7.9	-	5.7	12.7
1988/89	100.0	34.5	7.0	13.2	11.0	8.5	-	6.3	19.6
1989/90	100.0	31.7	6.6	13.4	11.4	10.5	1.8	6.4	18.2
1990/91 ⁽²⁾	100.0	35.6	6.5	12.5	10.7	11.7	2.8	6.2	14.1
1991/92	100.0	27.8	6.1	11.8	9.6	10.4	6.2	5.6	22.6
1992/93	100.0	32.2	7.1	13.8	11.2	12.7	15.4	7.1	0.6
1993/94	100.0	39.9	6.9	16.7	10.1	14.2	3.8	9.1	(0.7)
1994/95	100.0	28.1	5.8	12.0	9.9	13.4	5.0	7.3	18.5
1995/96	100.0	27.8	5.0	9.5	8.9	14.9	2.5	5.9	25.5
1996/97	100.0	21.5	5.0	8.8	8.4	14.4	0.8	4.1	37.0
1997/98	100.0	23.1	5.1	9.9	9.2	11.2	0.7	2.7	38.0
1998/99	100.0	23.6	6.4	14.9	9.0	12.4	0.7	2.5	30.4
1999/00	100.0	14.8	6.1	10.4	9.9	10.6	0.7	2.6	44.9
2000/01	100.0	21.2	5.9	12.4	13.0	9.5	0.8	2.4	34.9
2001/02	100.0	22.4	5.5	9.7	9.9	14.8	0.8	1.7	35.2
2002/03	100.0	19.3	5.2	14.4	11.7	9.2	0.9	4.4	34.9
2003/04 (r)	100.0	17.8	4.7	14.6	11.2	9.7	0.8	2.6	38.6
2004/05 (p)	100.0	23.3	4.8	15.8	13.2	10.6	1.0	3.2	28.2
2005/06 (p)	100.0	24.8	4.5	15.6	11.5	9.9	0.7	3.3	29.7
2006/07 (p)	100.0	25.0	4.8	15.9	12.4	10.6	0.8	3.7	26.7
2007/08 (p)	100.0	23.2	7.2	15.4	12.5	13.8	0.7	4.3	22.9
2008/09 (p)	100.0	22.4	5.4	12.1	10.6	9.2	0.5	3.7	36.2

Source: Government Accounts including Budget Appropriation

Note: ⁽¹⁾ Year ended 31 March up to 1990 and year ended 30 June after 1990

⁽²⁾ 15 month period

Tourism & Migration

- ❑ Total arrivals to the Cook Islands for 2008 was 105,931 of which 94,152 were visitors, showing a decrease of 3.3% over 2007. Visitors from New Zealand dominated visitor arrivals with 57.5%, followed by Europe and Australia with 12.7% and 10.7% respectively. Visitors from New Zealand increased by 1,699 persons in 2008, while visitors from Europe decreased by 1,936 persons.
- ❑ Of the total arrivals, 76,206 (71.9%) came for vacation purposes; while 10,885 (10.3%) came to visit friends and relatives. 62,546 (59.0%) were accommodated in hotels and motels.
- ❑ Resident departure for 2008 was 12,878, a decrease of 1.1% when compared to the previous year. A net outward flow of migration was experienced from 1987 to 1990 and from 1996 up until 2008, with the highest recorded outflow of 1,429 persons in the year 2000.
- ❑ Tourism accommodation room occupancy rates for 2008 was 53.3% compared to 52.7% in 2007 showing a slight increase over the previous year.

Total Arrivals and Departures
Percentage change over previous year

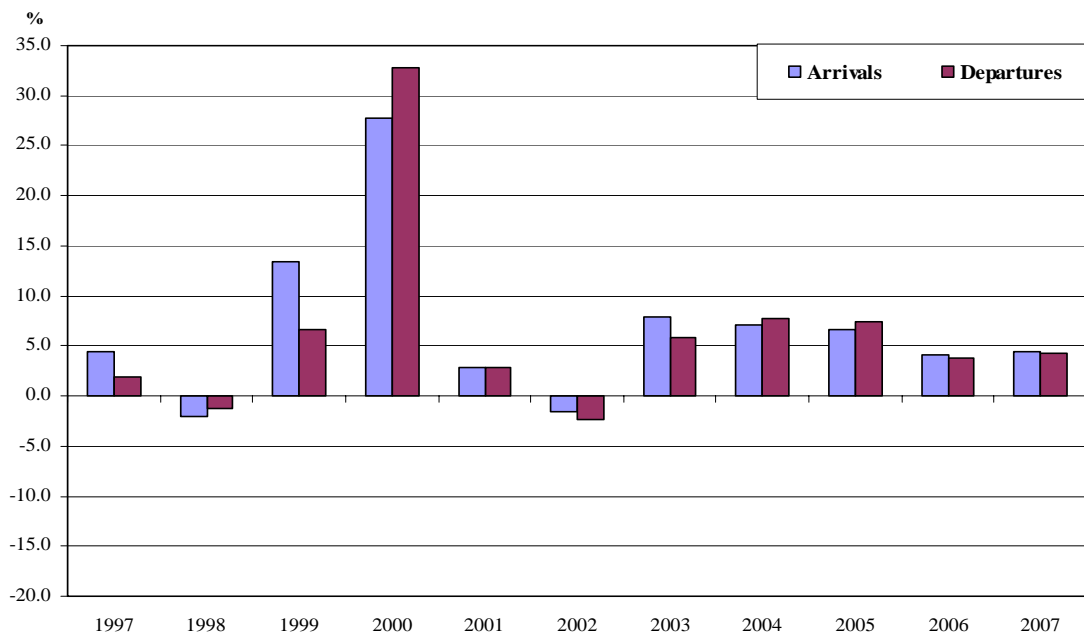


Table 6.1 Total Arrivals and Departures

Calendar Year	Total			Visitors			Cook Islands Residents		
	Arrivals	Departures	Excess ⁽¹⁾	Arrivals	Departures	Excess ⁽¹⁾	Arrivals	Departures	Excess ⁽¹⁾
1987	37,779	37,330	449	29,569	27,546	2,023	8,210	9,784	-1,574
1988	38,573	38,567	6	30,194	28,491	1,703	8,379	10,076	-1,697
1989	38,455	38,422	33	29,503	27,804	1,699	8,952	10,618	-1,666
1990	38,957	39,491	-534	30,439	29,675	764	8,518	9,816	-1,298
1991	45,395	45,021	374	39,976	40,485	-509	5,419	4,536	883
1992	56,146	55,609	537	50,190	50,180	10	5,956	5,429	527
1993	59,384	58,937	447	53,569	54,244	-675	5,815	4,693	1,122
1994	63,923	64,141	-218	57,293	57,909	-616	6,630	6,232	398
1995	54,239	52,945	1,294	47,899	46,773	1,126	6,340	6,172	168
1996	54,286	56,899	-2,613	48,354	50,137	-1,783	5,932	6,762	-830
1997	56,669	57,951	-1,282	49,866	49,972	-106	6,803	7,979	-1,176
1998	55,552	57,260	-1,708	48,629	49,015	-386	6,923	8,245	-1,322
1999	62,970	61,096	1,874	55,599	53,084	2,515	7,371	8,012	-641
2000	80,485	81,131	-646	72,994	72,211	783	7,491	8,920	-1,429
2001	82,736	83,398	-662	74,575	74,287	288	8,161	9,111	-950
2002	81,473	81,404	69	72,781	71,985	796	8,692	9,419	-727
2003	87,846	86,191	1,655	78,328	75,970	2,358	9,518	10,221	-703
2004	94,086	92,841	1,245	83,333	81,145	2,188	10,753	11,696	-943
2005	100,360	99,667	693	88,405	86,832	1,573	11,955	12,835	-880
2006 ^(f)	104,422	103,470	952	92,328	90,392	1,936	12,094	13,078	-984
2007 ^(f)	109,431	108,160	1,271	97,316	95,136	2,180	12,115	13,024	-909
2008 ^(p)	105,931	107,234	-1,303	94,152	94,356	-204	11,779	12,878	-1,099
Percentage Change over previous year									
1987	7.5	6.0	..	4.2	-0.1	..	21.6	27.9	..
1988	2.1	3.3	..	2.1	3.4	..	2.1	3.0	..
1989	-0.3	-0.4	..	-2.3	-2.4	..	6.8	5.4	..
1990	1.3	2.8	..	3.2	6.7	..	-4.8	-7.6	..
1991	16.5	14.0	..	31.3	36.4	..	-36.4	-53.8	..
1992	23.7	23.5	..	25.6	23.9	..	9.9	19.7	..
1993	5.8	6.0	..	6.7	8.1	..	-2.4	-13.6	..
1994	7.6	8.8	..	7.0	6.8	..	14.0	32.8	..
1995	-15.1	-17.5	..	-16.4	-19.2	..	-4.4	-1.0	..
1996	0.1	7.5	..	0.9	7.2	..	-6.4	9.6	..
1997	4.4	1.8	..	3.1	-0.3	..	14.7	18.0	..
1998	-2.0	-1.2	..	-2.5	-1.9	..	1.8	3.3	..
1999	13.4	6.7	..	14.3	8.3	..	6.5	-2.8	..
2000	27.8	32.8	..	31.3	36.0	..	1.6	11.3	..
2001	2.8	2.8	..	2.2	2.9	..	8.9	2.1	..
2002	-1.5	-2.4	..	-2.4	-3.1	..	6.5	3.4	..
2003	7.8	5.9	..	7.6	5.5	..	9.5	8.5	..
2004	7.1	7.7	..	6.4	6.8	..	13.0	14.4	..
2005	6.7	7.4	..	6.1	7.0	..	11.2	9.7	..
2006 ^(f)	4.0	3.8	..	4.4	4.1	..	1.2	1.9	..
2007 ^(f)	4.8	4.5	..	5.4	5.2	..	0.2	-0.4	..
2008 ^(p)	-3.2	-0.9	..	-3.3	-0.8	..	-2.8	-1.1	..

NOTE: ⁽¹⁾ Excess = Arrivals minus Departures

Table 6.2 Total Arrivals by Country of Usual Residence

Calendar Year	Total	New Zealand	Australia	USA	Canada	Europe	Asia	Cook Islands	French Polynesia	Other Country
1987	37,779	12,122	5,119	2,919	2,293	5,344	354	8,210	449	969
1988	38,573	12,624	5,272	3,233	1,961	5,348	314	8,379	600	842
1989	38,455	11,954	5,376	3,181	1,825	5,664	382	8,952	498	623
1990	38,957	11,300	4,950	4,295	2,443	6,020	354	8,518	545	532
1991	45,395	15,306	5,889	4,397	4,087	8,460	599	5,419	744	494
1992	56,146	17,872	5,626	5,949	3,991	13,533	604	5,956	1,793	822
1993	59,384	15,146	5,864	7,898	4,141	17,500	766	5,815	1,366	888
1994	63,923	15,312	5,186	7,839	3,962	20,380	627	6,630	3,282	705
1995	54,239	14,161	4,361	5,270	2,667	18,600	646	6,340	1,620	574
1996	54,286	14,538	4,075	6,088	2,757	18,024	447	5,932	1,845	580
1997	56,669	14,067	3,907	6,417	3,074	19,896	548	6,803	1,055	902
1998	55,552	14,150	4,021	5,365	3,622	19,290	450	6,923	1,072	659
1999	62,970	17,137	6,939	5,853	5,230	18,382	443	7,371	742	873
2000	80,485	22,019	12,128	6,734	5,992	23,683	654	7,491	756	1,028
2001	82,736	24,325	11,826	7,145	6,270	22,817	459	8,161	538	1,195
2002	81,473	28,841	9,952	6,716	4,789	19,630	503	8,692	936	1,414
2003	87,846	30,921	11,470	7,630	3,760	21,559	581	9,518	1,089	1,318
2004	94,086	38,755	11,850	6,026	2,419	20,410	552	10,753	1,442	1,879
2005	100,360	49,088	11,313	4,434	2,029	18,162	546	11,955	1,334	1,499
2006 ^(f)	104,422	51,841	11,470	5,476	2,205	18,109	550	12,094	1,163	1,514
2007 ^(f)	109,431	59,195	12,363	4,356	2,601	15,350	494	12,115	1,354	1,603
2008 ^(p)	105,931	60,894	11,362	3,512	2,133	13,414	496	11,779	1,039	1,302
Percentage Composition										
1987	100.0	32.1	13.5	7.7	6.1	14.1	0.9	21.7	1.2	2.6
1988	100.0	32.7	13.7	8.4	5.1	13.9	0.8	21.7	1.6	2.2
1989	100.0	31.1	14.0	8.3	4.7	14.7	1.0	23.3	1.3	1.6
1990	100.0	29.0	12.7	11.0	6.3	15.5	0.9	21.9	1.4	1.4
1991	100.0	33.7	13.0	9.7	9.0	18.6	1.3	11.9	1.6	1.1
1992	100.0	31.8	10.0	10.6	7.1	24.1	1.1	10.6	3.2	1.5
1993	100.0	25.5	9.9	13.3	7.0	29.5	1.3	9.8	2.3	1.5
1994	100.0	24.0	8.1	12.3	6.2	31.9	1.0	10.4	5.1	1.1
1995	100.0	26.1	8.0	9.7	4.9	34.3	1.2	11.7	3.0	1.1
1996	100.0	26.8	7.5	11.2	5.1	33.2	0.8	10.9	3.4	1.1
1997	100.0	24.8	6.9	11.3	5.4	35.1	1.0	12.0	1.9	1.6
1998	100.0	25.5	7.2	9.7	6.5	34.7	0.8	12.5	1.9	1.2
1999	100.0	27.2	11.0	9.3	8.3	29.2	0.7	11.7	1.2	1.4
2000	100.0	27.4	15.1	8.4	7.4	29.4	0.8	9.3	0.9	1.3
2001	100.0	29.4	14.3	8.6	7.6	27.6	0.6	9.9	0.7	1.4
2002	100.0	35.4	12.2	8.2	5.9	24.1	0.6	10.7	1.1	1.7
2003	100.0	35.2	13.1	8.7	4.3	24.5	0.7	10.8	1.2	1.5
2004	100.0	41.2	12.6	6.4	2.6	21.7	0.6	11.4	1.5	2.0
2005	100.0	48.9	11.3	4.4	2.0	18.1	0.5	11.9	1.3	1.5
2006 ^(f)	100.0	49.6	11.0	5.2	2.1	17.3	0.5	11.6	1.1	1.4
2007 ^(f)	100.0	54.1	11.3	4.0	2.4	14.0	0.5	11.1	1.2	1.5
2008 ^(p)	100.0	57.5	10.7	3.3	2.0	12.7	0.5	11.1	1.0	1.2

Table 6.3 Total Arrivals by Purpose of Visit

Calendar Year	Total	Vacation	Business	Employment	Conference	Visit Friends and Relations	Returning	Other
1987	37,779	26,248	1,827	157	8,210	1,337
1988	38,573	27,087	1,916	185	8,379	1,006
1989	38,455	26,830	1,863	92	8,952	718
1990	38,957	27,626	2,011	186	8,518	616
1991	45,395	35,589	2,120	221	5,419	2,046
1992	56,146	43,516	2,402	271	5,956	4,001
1993	59,384	48,407	2,145	206	5,815	2,811
1994	63,923	52,357	2,110	210	6,630	2,616
1995	54,239	44,414	1,745	144	6,340	1,596
1996	54,286	44,875	1,634	156	5,932	1,689
1997	56,669	45,942	2,057	160	6,803	1,707
1998	55,552	43,387	1,683	83	76	1,939	6,923	1,461
1999	62,970	45,881	1,950	210	320	5,292	7,371	1,946
2000	80,485	63,583	2,113	507	755	4,629	7,491	1,407
2001	82,736	65,168	2,398	215	562	4,714	8,161	1,518
2002	81,473	62,228	2,259	81	1,242	5,469	8,692	1,502
2003	87,846	66,883	2,950	156	912	5,962	9,518	1,465
2004	94,086	68,988	2,651	196	1,056	8,459	10,753	1,983
2005	100,360	72,849	2,537	211	661	9,646	11,955	2,501
2006 ^(f)	104,422	75,781	2,607	331	892	9,920	12,094	2,797
2007 ^(f)	109,431	78,638	3,030	238	1,077	11,450	12,115	2,883
2008 ^(g)	105,931	76,206	2,952	234	1,041	10,885	11,779	2,834
	Percentage Change over previous year							
1988	2.1	3.2	4.9	17.8	2.1	-24.8
1989	-0.3	-0.9	-2.8	-50.3	6.8	-28.6
1990	1.3	3.0	7.9	102.2	-4.8	-14.2
1991	16.5	28.8	5.4	18.8	-36.4	232.1
1992	23.7	22.3	13.3	22.6	9.9	95.6
1993	5.8	11.2	-10.7	-24.0	-2.4	-29.7
1994	7.6	8.2	-1.6	1.9	14.0	-6.9
1995	-15.1	-15.2	-17.3	-31.4	-4.4	-39.0
1996	0.1	1.0	-6.4	8.3	-6.4	5.8
1997	4.4	2.4	25.9	2.6	14.7	1.1
1998	-2.0	-5.6	-18.2	-48.1	1.8	-14.4
1999	13.4	5.7	15.9	153.0	321.1	172.9	6.5	33.2
2000	27.8	38.6	8.4	141.4	135.9	-12.5	1.6	-27.7
2001	2.8	2.5	13.5	-57.6	-25.6	1.8	8.9	7.9
2002	-1.5	-4.5	-5.8	-62.3	121.0	16.0	6.5	-1.1
2003	7.8	7.5	30.6	92.6	-26.6	9.0	9.5	-2.5
2004	7.1	3.1	-10.1	25.6	15.8	41.9	13.0	35.4
2005	6.7	5.6	-4.3	7.7	-37.4	14.0	11.2	26.1
2006 ^(f)	4.0	4.0	2.8	56.9	34.9	2.8	1.2	11.8
2007 ^(f)	4.8	3.8	16.2	-28.1	20.7	15.4	0.2	3.1
2008 ^(g)	-3.2	-3.1	-2.6	-1.7	-3.3	-4.9	-2.8	-1.7

Table 6.4 Total Arrivals by Type of Accommodation

Calendar Year	Total	Private	Hotel	Motel	Other
1987	37,779	11,062	17,337	9,195	185
1988	38,573	11,163	17,723	9,296	391
1989	38,455	11,795	17,190	9,230	240
1990	38,957	11,413	17,512	9,688	344
1991	45,395	11,900	21,176	11,788	531
1992	56,146	13,464	27,479	14,645	558
1993	59,384	12,994	29,977	14,551	1,862
1994	63,923	14,299	31,544	16,013	2,067
1995	54,239	12,275	23,999	17,229	736
1996	54,286	11,832	25,662	14,294	2,498
1997	56,669	12,852	24,059	16,984	2,774
1998	55,552	13,623	23,375	17,281	1,273
1999	62,970	15,635	26,974	16,820	3,541
2000	80,485	16,137	38,285	14,255	11,808
2001	82,736	17,706	38,644	14,018	12,368
2002	81,473	15,030	36,796	15,238	14,409
2003	87,846	16,561	38,691	17,737	14,857
2004	94,086	23,020	38,083	19,016	13,967
2005	100,360	27,313	37,783	20,861	14,403
2006 ⁽ⁱ⁾	104,422	29,088	39,503	22,858	12,973
2007 ⁽ⁱ⁾	109,431	30,177	41,082	23,380	14,792
2008 ⁽ⁱⁱ⁾	105,931	29,018	39,832	22,714	14,367
	Percentage Change over previous year				
1988	2.1	0.9	2.2	1.1	111.4
1989	-0.3	5.7	-3.0	-0.7	-38.6
1990	1.3	-3.2	1.9	5.0	43.3
1991	16.5	4.3	20.9	21.7	54.4
1992	23.7	13.1	29.8	24.2	5.1
1993	5.8	-3.5	9.1	-0.6	233.7
1994	7.6	10.0	5.2	10.0	11.0
1995	-15.1	-14.2	-23.9	7.6	-64.4
1996	0.1	-3.6	6.9	-17.0	239.4
1997	4.4	8.6	-6.2	18.8	11.0
1998	-2.0	6.0	-2.8	1.7	-54.1
1999	13.4	14.8	15.4	-2.7	178.2
2000	27.8	3.2	41.9	-15.2	233.5
2001	2.8	9.7	0.9	-1.7	4.7
2002	-1.5	-15.1	-4.8	8.7	16.5
2003	7.8	10.2	5.2	16.4	3.1
2004	7.1	39.0	-1.6	7.2	-6.0
2005	6.7	18.6	-0.8	9.7	3.1
2006 ⁽ⁱ⁾	4.0	6.5	4.6	9.6	-9.9
2007 ⁽ⁱ⁾	4.8	3.7	4.0	2.3	14.0
2008 ⁽ⁱⁱ⁾	-3.2	-3.8	-3.0	-2.8	-2.9

Table 6.5 Total Arrivals by Occupational Classification

Calendar Year	Total	Legislators	Professionals	Technicians	Clerical	Services Workers	Agriculture Workers	Production Workers	Operators	Other Occupation	Persons ^{1/} not easily classifiable by Occupation
1987	37,779	9,064	3,698	4,590	1,086	3,270	612	846	4,214	3,114	7,285
1988	38,573	10,623	2,992	3,671	1,527	2,243	783	1,090	4,658	3,928	7,058
1989	38,455	11,178	3,020	3,177	1,469	1,876	782	696	4,763	4,463	7,031
1990	38,957	10,964	3,031	3,018	1,580	2,324	834	892	4,885	4,314	7,115
1991	45,395	12,740	4,264	3,419	1,705	2,626	679	961	5,329	5,757	7,915
1992	56,146	15,484	4,855	4,507	1,994	3,096	972	924	6,482	8,551	9,281
1993	59,384	9,218	4,846	6,204	2,039	7,159	845	2,614	6,737	9,746	9,976
1994	63,923	5,624	6,887	3,519	6,712	7,544	998	2,676	1,480	17,252	11,231
1995	54,239	5,421	6,034	2,950	5,577	4,616	803	2,616	933	14,984	10,305
1996	54,286	5,879	9,175	2,926	3,737	4,575	1,018	2,190	1,145	13,034	10,607
1997	56,669	5,698	6,763	4,014	3,599	4,764	580	1,786	1,363	17,821	10,281
1998	55,552	4,441	9,194	1,894	2,672	6,452	549	1,266	849	17,457	10,778
1999	62,970	5,519	8,848	2,773	2,867	12,218	907	1,230	730	16,179	11,699
2000	80,485	8,015	16,536	3,887	7,079	5,964	1,133	3,295	1,068	16,386	17,122
2001	82,736	9,084	15,731	9,900	6,796	4,088	1,167	3,413	750	7,193	24,614
2002	81,473	9,592	11,358	15,499	6,658	4,112	907	3,148	705	4,330	25,164
2003	87,846	9,879	9,692	17,130	8,433	5,280	1,934	3,168	768	4,117	27,445
2004	94,086	11,596	8,851	17,797	9,934	4,710	2,265	4,176	708	3,127	30,922
2005	100,360	12,469	11,361	19,204	8,965	4,744	1,877	4,608	782	3,368	32,982
2006 ^(f)	104,422	13,244	9,711	19,901	11,360	4,698	1,713	5,679	905	2,830	34,381
2007 ^(f)	109,431	13,304	13,730	17,319	10,555	5,747	1,711	6,145	1,366	4,892	34,662
2008 ^(p)	105,931	12,879	13,292	16,766	10,218	5,564	1,656	5,949	1,322	4,736	33,549
Percentage change over previous year											
1988	2.1	17.2	-19.1	-20.0	40.6	-31.4	27.9	28.8	10.5	26.1	-3.1
1989	-0.3	5.2	0.9	-13.5	-3.8	-16.4	-0.1	-36.1	2.3	13.6	-0.4
1990	1.3	-1.9	0.4	-5.0	7.6	23.9	6.6	28.2	2.6	-3.3	1.2
1991	16.5	16.2	40.7	13.3	7.9	13.0	-18.6	7.7	9.1	33.4	11.2
1992	23.7	21.5	13.9	31.8	17.0	17.9	43.2	-3.9	21.6	48.5	17.3
1993	5.8	-40.5	-0.2	37.7	2.3	131.2	-13.1	182.9	3.9	14.0	7.5
1994	7.6	-39.0	42.1	-43.3	229.2	5.4	18.1	2.4	-78.0	77.0	12.6
1995	-15.1	-3.6	-12.4	-16.2	-16.9	-38.8	-19.5	-2.2	-37.0	-13.1	-8.2
1996	0.1	8.4	52.1	-0.8	-33.0	-0.9	26.8	-16.3	22.7	-13.0	2.9
1997	4.4	-3.1	-26.3	37.2	-3.7	4.1	-43.0	-18.4	19.0	36.7	-3.1
1998	-2.0	-22.1	35.9	-52.8	-25.8	35.4	-5.3	-29.1	-37.7	-2.0	4.8
1999	13.4	24.3	-3.8	46.4	7.3	89.4	65.2	-2.8	-14.0	-7.3	8.5
2000	27.8	45.2	86.9	40.2	146.9	-51.2	24.9	167.9	46.3	1.3	46.4
2001	2.8	13.3	-4.9	154.7	-4.0	-31.5	3.0	3.6	-29.8	-56.1	43.8
2002	-1.5	5.6	-27.8	56.6	-2.0	0.6	-22.3	-7.8	-6.0	-39.8	2.2
2003	7.8	3.0	-14.7	10.5	26.7	28.4	113.2	0.6	8.9	-4.9	9.1
2004	7.1	17.4	-8.7	3.9	17.8	-10.8	17.1	31.8	-7.8	-24.0	12.7
2005	6.7	7.5	28.4	7.9	-9.8	0.7	-17.1	10.3	10.5	7.7	6.7
2006 ^(f)	4.0	6.2	-14.5	3.6	26.7	-1.0	-8.7	23.2	15.7	-16.0	4.2
2007 ^(f)	4.8	0.5	41.4	-13.0	-7.1	22.3	-0.1	8.2	50.9	72.9	0.8
2008 ^(p)	-3.2	-3.2	-3.2	-3.2	-3.2	-3.2	-3.2	-3.2	-3.2	-3.2	-3.2

Note: ^{1/} Included in this category are those persons less than 15 years of age, retirees and those that cannot be easily classifiable by occupation. Prior to 1999 these persons were included in the category "Other Occupation".

Table 6.6 Total Arrivals by Age Grouping

Calendar Year	Total	0-14	15-24	25-34	35-44	45-59	60+
1987	37,779	3,954	5,310	8,857	7,216	7,463	4,979
1988	38,573	3,929	5,634	8,948	7,371	8,014	4,677
1989	38,455	4,077	5,498	9,025	7,372	8,067	4,416
1990	38,957	4,000	5,083	9,110	7,645	8,463	4,656
1991	45,395	4,132	5,794	10,972	8,641	10,201	5,655
1992	56,146	4,690	6,343	13,636	10,854	13,761	6,862
1993	59,384	4,816	6,506	14,623	10,659	15,067	7,713
1994	63,923	5,407	6,431	15,417	11,516	16,447	8,705
1995	54,239	4,719	5,561	13,022	9,492	14,237	7,208
1996	54,286	4,391	5,113	12,943	9,448	14,118	8,273
1997	56,669	4,544	6,286	12,888	9,563	14,813	8,575
1998	55,552	4,649	6,366	12,641	8,991	14,289	8,616
1999	62,970	5,362	7,720	14,319	10,565	15,837	9,167
2000	80,485	6,777	9,653	18,792	13,615	20,313	11,335
2001	82,736	7,239	10,112	19,169	13,858	20,996	11,362
2002	81,473	7,860	9,361	18,503	14,368	21,076	10,305
2003	87,846	8,273	10,819	20,183	15,379	21,975	11,217
2004	94,086	9,593	11,557	20,375	16,543	23,527	12,491
2005	100,360	11,506	12,124	21,474	17,984	24,646	12,626
2006 ^(f)	104,422	12,013	12,161	22,021	18,540	25,569	14,118
2007 ^(f)	109,431	12,981	12,935	22,093	19,577	27,203	14,642
2008 ^(p)	105,931	12,566	12,521	21,386	18,951	26,333	14,174
Percentage Composition							
1988	100.0	10.2	14.6	23.2	19.1	20.8	12.1
1989	100.0	10.6	14.3	23.5	19.2	21.0	11.5
1990	100.0	10.3	13.0	23.4	19.6	21.7	12.0
1991	100.0	9.1	12.8	24.2	19.0	22.5	12.5
1992	100.0	8.4	11.3	24.3	19.3	24.5	12.2
1993	100.0	8.1	11.0	24.6	17.9	25.4	13.0
1994	100.0	8.5	10.1	24.1	18.0	25.7	13.6
1995	100.0	8.7	10.3	24.0	17.5	26.2	13.3
1996	100.0	8.1	9.4	23.8	17.4	26.0	15.2
1997	100.0	8.0	11.1	22.7	16.9	26.1	15.1
1998	100.0	8.4	11.5	22.8	16.2	25.7	15.5
1999	100.0	8.5	12.3	22.7	16.8	25.2	14.6
2000	100.0	8.4	12.0	23.3	16.9	25.2	14.1
2001	100.0	8.7	12.2	23.2	16.7	25.4	13.7
2002	100.0	9.6	11.5	22.7	17.6	25.9	12.6
2003	100.0	9.4	12.3	23.0	17.5	25.0	12.8
2004	100.0	10.2	12.3	21.7	17.6	25.0	13.3
2005	100.0	11.5	12.1	21.4	17.9	24.6	12.6
2006 ^(f)	100.0	11.5	11.6	21.1	17.8	24.5	13.5
2007 ^(f)	100.0	11.9	11.8	20.2	17.9	24.9	13.4
2008 ^(p)	100.0	11.9	11.8	20.2	17.9	24.9	13.4

Table 6.7 Hotel /Motel Occupancy Rates

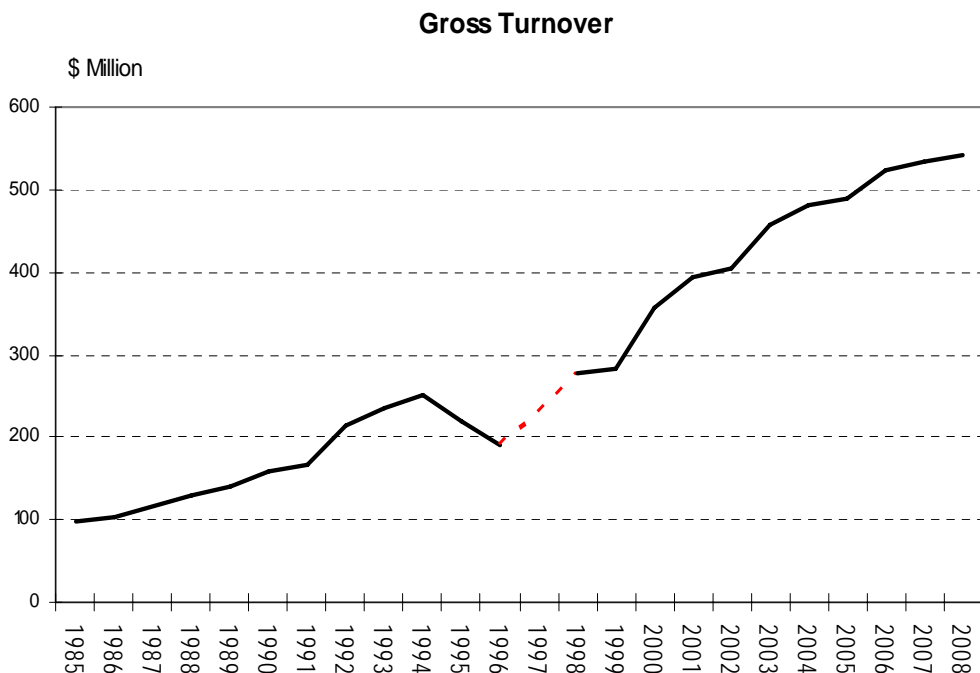
Calendar Year	Room Nights			Bed Nights		
	Available	Occupied	Occupancy Rate(%)	Available	Occupied	Occupancy Rate(%)
1987	149,160	94,494	63.4	348,989	272,965	78.2
1988	161,240	81,247	50.4	340,801	159,631	46.8
1989	175,529	98,750	56.3	383,024	204,504	53.4
1990	181,446	110,316	60.8	452,305	272,965	60.3
1991	204,650	134,288	65.6	477,672	287,330	60.2
1992	214,276	151,161	70.5	544,651	299,279	54.9
1993	200,079	140,923	70.4	507,086	289,810	57.2
1994	204,829	139,110	67.9	491,844	295,457	60.1
1995	245,323	139,835	57.0	623,110	313,545	50.3
1996	270,668	155,588	57.5	714,075	351,063	49.2
1997	256,833	157,083	61.2	692,017	373,749	54.0
1998	276,140	161,316	58.4	726,088	384,075	52.9
1999	283,449	174,717	61.6	776,106	473,176	61.0
2000	286,537	218,768	76.3	798,062	547,182	68.6
2001	316,762	225,244	71.1	856,693	502,957	58.7
2002	331,892	209,397	63.1	900,880	470,979	52.3
2003	338,296	204,454	60.4	899,731	475,883	52.9
2004	375,167	207,749	55.4	1,031,048	458,599	44.5
2005	363,867	230,319	63.3	1,011,947	548,915	54.2
2006	348,459	260,754	74.8	1,040,199	703,556	67.6
2007 ^(f)	428,518	225,681	52.7	1,122,218	521,516	46.5
2008 ^(g)	424,515	226,354	53.3	1,141,218	540,495	47.4
Percentage change over the previous year						
1988	8.1	-14.0	-20.5	-2.3	-41.5	-40.1
1989	8.9	21.5	11.6	12.4	28.1	14.0
1990	3.4	11.7	8.1	18.1	33.5	13.0
1991	12.8	21.7	7.9	5.6	5.3	-0.3
1992	4.7	12.6	7.5	14.0	4.2	-8.7
1993	-6.6	-6.8	-0.2	-6.9	-3.2	4.0
1994	2.4	-1.3	-3.6	-3.0	1.9	5.1
1995	19.8	0.5	-16.1	26.7	6.1	-16.2
1996	10.3	11.3	0.8	14.6	12.0	-2.3
1997	-5.1	1.0	6.4	-3.1	6.5	9.9
1998	7.5	2.7	-4.5	4.9	2.8	-2.1
1999	2.6	8.3	5.5	6.9	23.2	15.3
2000	1.1	25.2	23.9	2.8	15.6	12.5
2001	10.5	3.0	-6.9	7.3	-8.1	-14.4
2002	4.8	-7.0	-11.3	5.2	-6.4	-11.0
2003	1.9	-2.4	-4.2	-0.1	1.0	1.2
2004	10.9	1.6	-8.4	14.6	-3.6	-15.9
2005	-3.0	10.9	14.3	-1.9	19.7	22.0
2006	-4.2	13.2	18.2	2.8	28.2	24.7
2007 ^(f)	23.0	-13.5	-29.6	7.9	-25.9	-31.3
2008 ^(g)	-0.9	0.3	1.2	1.7	3.6	1.9

Table 6.8 Number of Hotels and Motels with Number of Employees

Calendar Year	Number of rooms	Number of beds	C Is Resident Employees			Expatriate Employees			
			Total	Males	Females	Total	Males	Females	
1987	409	956	279	108	171	15	11	4	
1988	442	934	244	87	157	20	15	5	
1989	481	1,049	220	84	136	26	20	6	
1990	497	1,239	258	119	139	22	17	5	
1991	561	1,309	269	108	161	21	16	5	
1992	587	1,492	366	123	243	22	16	6	
1993	548	1,389	377	147	230	21	15	6	
1994	561	1,348	400	137	263	26	17	9	
1995	672	1,707	427	151	276	33	21	12	
1996	742	1,956	405	149	256	29	18	11	
1997	704	1,896	407	161	246	17	12	5	
1998	757	1,989	387	159	228	17	13	4	
1999	777	2,126	423	172	251	21	14	7	
2000	785	2,186	493	196	297	33	20	13	
2001	868	2,347	579	215	364	62	37	25	
2002	909	2,468	574	197	376	68	36	31	
2003	927	2,465	548	183	366	73	45	28	
2004	1,028	2,825	563	179	384	94	53	41	
2005	997	2,772	578	183	395	113	61	52	
2006	1,069	2,698	539	188	351	152	77	75	
2007 ⁽ⁱ⁾	1,191	3,143	534	179	355	173	91	82	
2008 ^(p)	1,173	3,138	542	186	356	175	92	83	
			Percentage change over the previous year						
1988	8.1	-2.3	-12.5	-19.4	-8.2	33.3	36.4	25.0	
1989	8.9	12.4	-9.8	-3.4	-13.4	30.0	33.3	20.0	
1990	3.4	18.1	17.3	41.7	2.2	-15.4	-15.0	-16.7	
1991	12.8	5.6	4.3	-9.2	15.8	-4.5	-5.9	0.0	
1992	4.7	14.0	36.1	13.9	50.9	4.8	0.0	20.0	
1993	-6.6	-6.9	3.0	19.5	-5.3	-4.5	-6.3	0.0	
1994	2.4	-3.0	6.1	-6.8	14.3	23.8	13.3	50.0	
1995	19.8	26.7	6.7	10.2	4.9	26.9	23.5	33.3	
1996	10.3	14.6	-5.2	-1.3	-7.2	-12.1	-14.3	-8.3	
1997	-5.1	-3.1	0.5	8.1	-3.9	-41.4	-33.3	-54.5	
1998	7.5	4.9	-4.9	-1.2	-7.3	0.0	8.3	-20.0	
1999	2.6	6.9	9.3	8.2	10.1	23.5	7.7	75.0	
2000	1.1	2.8	16.6	14.2	18.3	57.1	42.3	86.9	
2001	10.5	7.3	17.4	9.4	22.6	88.9	87.4	91.1	
2002	4.8	5.2	-0.9	-8.2	3.4	8.3	-2.5	24.3	
2003	1.9	-0.1	-4.4	-7.4	-2.9	7.8	22.2	-9.1	
2004	10.9	14.6	2.7	-1.9	5.1	29.2	19.1	45.1	
2005	-3.0	-1.9	2.7	2.2	2.9	20.2	15.1	26.8	
2006	7.2	-2.7	-6.7	2.7	-11.1	34.5	26.2	44.2	
2007 ⁽ⁱ⁾	11.4	16.5	-0.9	-4.8	1.1	13.8	18.2	9.3	
2008 ^(p)	-1.5	-0.2	1.5	3.9	0.3	1.2	1.1	1.2	

Taxation

- ❑ Total gross turnover generated by industries recorded an annual turnover of \$543 million in 2008. Since 1998, gross turnover have experienced some significant annual increases especially in the years 2000 and 2003 with 25.1% and 13.1% respectively.
- ❑ Gross turnover in 2008 increased by \$9.2 million (1.7%). Major contributions to Gross turnover were Wholesale & Retail Trade sector of \$222 million (40.9%), Transport & Communication \$96 million (17.7%) and Hotels and Motels \$80 million (14.7%).
- ❑ Vat collected on sales and income decreased by 1.5% or \$0.9 million in 2008, taking the level from \$56.5 million in the previous year to \$55.6 million.
- ❑ Income Tax for the years 1998 to 2008 fluctuate over the period. In 2008 it stands at \$43.0 million and is likely to increase as more income tax returns are received.



Note: introduction of newer taxation system from PIT to VAT in 1997.

Table 7.1 Cook Islands Gross Turnover by Industry

Calendar Year	All Industries	Agriculture & Fishing	Construction	Wholesale & Retail Trade	Restaurants & Bars	Hotels & Motels	Transport & Communication	Finance & Business Services	Community, & Personal Services	Other Industries
	(\$000)									
1984	72,637	879	2,116	45,910	1,117	4,594	8,471	4,391	2,159	3,000
1985	98,909	427	3,300	55,271	2,281	8,387	15,733	6,296	2,042	5,173
1986	102,077	1,392	4,313	55,712	2,171	8,016	15,185	7,480	2,993	4,815
1987	116,178
1988	130,228	1,663	5,016	67,328	3,785	11,804	19,780	11,034	3,508	6,310
1989	140,154	3,567	5,656	74,278	3,924	10,549	16,946	12,457	5,730	7,047
1990	157,315	5,834	7,344	74,820	3,958	12,784	17,642	15,795	12,249	6,889
1991	166,309	5,424	5,179	84,098	5,252	14,380	24,508	15,972	4,277	7,219
1992	214,916	1,353	15,878	109,255	10,496	12,867	27,990	20,237	6,015	10,826
1993	234,621	1,508	10,094	112,749	12,485	17,345	32,336	29,558	6,530	12,017
1994	251,761	1,752	7,267	112,600	12,854	21,354	34,864	44,450	6,931	9,689
1995	219,671	1,295	5,143	100,053	9,956	18,132	32,068	38,105	5,942	8,976
1996	188,995	1,713	5,356	88,279	4,405	20,212	29,112	26,781	6,032	7,106
1997 ⁽¹⁾
1998	278,347	7,600	6,789	101,357	6,907	25,848	50,686	18,967	41,079	19,114
1999	284,487	6,984	7,348	112,184	7,611	30,907	56,954	18,716	23,865	19,919
2000	355,974	8,190	11,329	143,169	12,096	51,268	69,414	22,345	15,192	22,971
2001	393,572	6,735	12,877	157,640	14,389	54,403	76,888	26,364	18,155	26,123
2002	405,033	7,988	12,865	162,724	13,301	56,894	80,047	24,406	18,140	28,669
2003	457,925	11,401	17,515	185,652	14,837	63,201	89,152	25,305	18,540	32,322
2004	482,081	8,850	17,785	201,742	15,535	66,161	88,357	29,880	18,289	35,482
2005	490,940	8,808	12,772	221,110	14,668	66,045	82,474	27,887	19,788	37,388
2006	524,619	7,393	16,026	222,897	16,880	81,748	90,332	30,255	21,983	37,105
2007	533,860	6,021	17,887	212,111	17,486	90,409	89,791	33,091	24,639	42,425
2008	543,064	5,764	16,133	222,392	15,593	79,727	96,397	33,196	24,543	49,319
	Percentage change over previous year									
1984	6.8	72.7	-18.1	5.3	-29.1	-5.6	24.6	33.6	6.1	8.2
1985	36.2	-51.4	55.9	20.4	104.1	82.6	85.7	43.4	-5.4	72.4
1986	3.2	225.9	30.7	0.8	-4.8	-4.4	-3.5	18.8	46.6	-6.9
1987	13.8
1988	12.1
1989	7.6	114.5	12.8	10.3	3.7	-10.6	-14.3	12.9	63.3	11.7
1990	12.2	63.6	29.9	0.7	0.9	21.2	4.1	26.8	113.8	-2.2
1991	5.7	-7.0	-29.5	12.4	32.7	12.5	38.9	1.1	-65.1	4.8
1992	29.2	-75.1	206.6	29.9	99.9	-10.5	14.2	26.7	40.6	50.0
1993	9.2	11.5	-36.4	3.2	18.9	34.8	15.5	46.1	8.5	11.0
1994	7.3	16.2	-28.0	-0.1	3.0	23.1	7.8	50.4	6.1	-19.4
1995	-12.7	-26.1	-29.2	-11.1	-22.5	-15.1	-8.0	-14.3	-14.3	-7.4
1996	-14.0	32.3	4.1	-11.8	-55.8	11.5	-9.2	-29.7	1.5	-20.8
1997 ⁽¹⁾
1998
1999	2.2	-8.1	8.2	10.7	10.2	19.6	12.4	-1.3	-41.9	4.2
2000	25.1	17.3	54.2	27.6	58.9	65.9	21.9	19.4	-36.3	15.3
2001	10.6	-17.8	13.7	10.1	19.0	6.1	10.8	18.0	19.5	13.7
2002	2.9	18.6	-0.1	3.2	-7.6	4.6	4.1	-7.4	-0.1	9.7
2003	13.1	42.7	36.1	14.1	11.6	11.1	11.4	3.7	2.2	12.7
2004	5.3	-22.4	1.5	8.7	4.7	4.7	-0.9	18.1	-1.4	9.8
2005	1.8	-0.5	-28.2	9.6	-5.6	-0.2	-6.7	-6.7	8.2	5.4
2006	6.9	-16.1	25.5	0.8	15.1	23.8	9.5	8.5	11.1	-0.8
2007	1.8	-18.6	11.6	-4.8	3.6	10.6	-0.6	9.4	12.1	14.3
2008	1.7	-4.3	-9.8	4.8	-10.8	-11.8	7.4	0.3	-0.4	16.2

Source: Revenue Management Division, MFEM

Note: ⁽¹⁾ Figures for the months January to June 1997 are not available and figures for July onwards are not comparable due to a change from Turnover Tax to Value Added Tax.

Table 7.2 Cook Islands TOT Payable / VAT collected on Sales and Income, by Industry

Calendar Year	All Industries	Agriculture & Fishing	Construction	Wholesale & Retail Trade	Restaurants & Bars	Hotels & Motels	Transport & Communication	Finance & Business Services	Community & Personal Services	Other Industries
	(\$000)									
1984	2,221	12	79	1,413	41	184	196	158	57	82
1985	3,966	6	166	2,068	126	463	691	242	104	100
1986	4,669	52	240	2,387	139	482	711	435	128	94
1987	6,989
1988	9,665	51	438	4,671	377	1,168	1,442	1,024	314	182
1989	10,340	81	427	5,131	390	1,033	1,334	1,322	429	194
1990	19,919	95	546	4,940	395	1,261	1,409	1,543	519	211
1991	12,171	91	291	5,694	525	1,412	1,974	1,563	360	260
1992	16,187	68	927	7,566	1,005	1,282	2,443	2,003	509	384
1993	18,133	66	810	7,763	1,211	1,692	2,836	2,763	561	431
1994	19,216	56	607	7,640	1,221	2,132	3,071	3,459	569	461
1995	16,717	36	451	6,740	940	1,794	2,803	3,006	501	446
1996	14,628	33	456	5,844	436	2,028	2,598	2,376	524	333
1997 ⁽¹⁾
1998	27,990	320	754	10,590	768	2,847	4,088	2,008	4,521	2,095
1999	28,856	309	806	11,974	853	3,439	4,762	2,017	2,639	2,056
2000	36,078	297	1,276	15,356	1,344	5,698	5,696	2,434	1,591	2,387
2001	40,379	374	1,429	16,858	1,600	6,058	6,537	2,854	1,979	2,688
2002	41,682	484	1,096	17,348	1,638	6,706	6,712	3,077	1,787	2,834
2003	46,248	578	1,965	19,847	1,683	6,821	6,990	2,757	2,379	3,228
2004	49,127	490	1,988	21,817	1,706	7,343	7,186	3,240	2,025	3,332
2005	50,528	543	1,396	23,790	1,957	7,293	6,827	3,037	1,914	3,771
2006	53,885	554	1,709	23,842	1,866	8,756	7,561	3,314	2,386	3,897
2007	56,509	549	1,976	22,368	1,935	10,193	7,595	4,688	2,722	4,483
2008	55,635	535	1,797	21,551	1,700	10,590	7,851	3,645	2,711	5,255
	Percentage change over previous year									
1984	7.6	68.1	-11.3	9.5	-37.1	-3.6	3.4	25.2	17.5	40.8
1985	78.6	-53.7	108.8	46.4	205.6	152.4	253.6	53.1	82.8	22.6
1986	17.7	835.7	44.7	15.4	10.6	4.1	2.8	79.7	22.5	-5.9
1987	49.7
1988	38.3
1989	7.0	58.8	-2.4	9.8	3.4	-11.5	-7.5	29.1	36.8	6.6
1990	5.6	17.9	27.8	-3.7	1.4	22.0	5.7	16.7	20.8	9.0
1991	11.5	-3.7	-46.6	15.3	32.7	12.0	40.0	1.3	-30.5	23.2
1992	33.0	-25.7	218.2	32.9	91.5	-9.2	23.8	28.2	41.1	47.5
1993	12.0	-2.8	-12.7	2.6	20.4	32.0	16.1	37.9	10.3	12.3
1994	6.0	-15.2	-25.0	-1.6	0.8	26.0	8.3	25.2	1.3	7.0
1995	-13.0	-35.0	-25.7	-11.8	-23.0	-15.8	-8.7	-13.1	-11.9	-3.3
1996	-12.5	-8.3	1.0	-13.3	-53.6	13.0	-7.3	-20.9	4.6	-25.2
1997 ⁽¹⁾
1998
1999	3.1	-3.3	6.9	13.1	11.1	20.8	16.5	0.5	-41.6	-1.9
2000	25.0	-3.9	58.2	28.2	57.6	65.7	19.6	20.6	-39.7	16.0
2001	11.9	26.0	12.0	9.8	19.0	6.3	14.8	17.3	24.4	12.6
2002	3.2	29.2	-23.3	2.9	2.4	10.7	2.7	7.8	-9.7	5.4
2003	11.0	19.5	79.4	14.4	2.8	1.7	4.1	-10.4	33.1	13.9
2004	6.2	-15.3	1.1	9.9	1.3	7.7	2.8	17.5	-14.9	3.2
2005	2.9	10.9	-29.8	9.0	14.7	-0.7	-5.0	-6.3	-5.5	13.2
2006	6.6	2.0	22.4	0.2	-4.7	20.1	10.7	9.1	24.7	3.4
2007	4.9	-0.9	15.6	-6.2	3.7	16.4	0.4	41.5	14.1	15.0
2008	-1.5	-2.6	-9.1	-3.7	-12.1	3.9	3.4	-22.2	-0.4	17.2

Source: Revenue Management Division, MFEM

Note: ⁽¹⁾ Figures for the months January to June 1997 are not available and figures for July onwards are not comparable due to a change from Turnover Tax to Value Added Tax.

Table 7.3 Income Tax (IR4) Returns

Calendar Year	Number of Returns	Gross Income (\$000)	Taxable Income (\$000)	Tax Assessed (\$000)	Mean Income (\$)	Median Income (\$)	Minimum(1) Living Level (\$)
1984	4,198	21,074	20,471	3,191	5,200	4,000	8,950
1985	4,878	28,282	27,417	4,995	5,800	4,300	9,763
1986	5,139	32,503	31,489	5,493	6,300	4,700	10,740
1987	5,270	37,132	35,870	6,605	7,000	5,200	11,879
1988	5,212	43,233	41,970	7,827	8,300	6,000	13,185
1989	5,457	48,465	46,853	10,880	8,900	6,400	13,954
1990	5,899	57,834	55,897	12,833	9,800	6,900	14,236
1991	5,947	72,133	71,167	18,474	12,300	7,500	14,249
1992	6,515	66,602	65,364	15,609	10,200	7,600	14,708
1993	6,227	66,592	65,273	15,787	10,700	8,000	16,532
1994 ⁽²⁾	5,754	64,492	63,202	15,479	11,200	8,600	18,184
1995	2,147	24,531	23,008	9,638	11,400	8,400	17,414
1996	2,154	26,703	26,332	6,941	12,400	9,800	18,084
1997	18,055
1998	2,186	31,397	19,038	4,642	14,400	11,500	17,881
1999	2,393	36,945	22,850	5,719	15,400	12,300	19,943
2000	2,500	40,708	26,386	6,642	16,300	12,600	20,831
2001	2,475	41,087	26,419	6,868	16,600	13,300	20,955
2002	2,137	36,922	24,250	6,216	17,300	13,600	24,224
2003	2,824	50,891	23,690	7,586	18,000	15,100	24,596
2004	2,453	47,746	24,178	7,218	19,400	15,900	24,511
2005	2,612	52,757	27,484	8,101	20,197	15,600	25,678
2006	2,989	64,070	34,960	10,257	#REF!	15,975	26,141
2007	2,023	43,746	24,179	7,028	21,624	16,760	28,138
2008	2,125	43,003	22,393	6,486	21,236	16,723	28,350
Percentage change over previous year							
1985	16.2	34.2	33.9	56.5	11.5	7.5	9.1
1986	5.4	14.9	14.9	10.0	8.6	9.3	10.0
1987	2.5	14.2	13.9	20.2	11.1	10.6	10.6
1988	-1.1	16.4	17.0	18.5	18.6	15.4	11.0
1989	4.7	12.1	11.6	39.0	7.2	6.7	5.8
1990	8.1	19.3	19.3	17.9	10.1	7.8	2.0
1991	0.8	24.7	27.3	44.0	25.5	8.7	0.1
1992	9.6	-7.7	-8.2	-15.5	-17.1	1.3	3.2
1993	-4.4	0.0	-0.1	1.1	4.9	5.3	12.4
1994 ⁽²⁾	-7.6	-3.2	-3.2	-1.9	4.7	7.5	10.0
1995	-62.7	-62.0	-63.6	-37.7	1.8	-2.3	-4.2
1996	0.3	8.9	14.4	-28.0	8.8	16.7	3.8
1997	-0.2
1998	-1.0
1999	9.5	17.7	20.0	23.2	6.9	7.0	11.5
2000	4.5	10.2	15.5	16.1	5.8	2.4	4.4
2001	-1.0	0.9	0.1	3.4	1.8	5.6	0.6
2002	-13.7	-10.1	-8.2	-9.5	4.2	2.3	15.6
2003	32.1	37.8	-2.3	22.0	4.0	11.0	1.5
2004	-13.1	-6.2	2.1	-4.9	7.8	5.3	-0.3
2005	6.5	10.5	13.7	12.2	4.1	-1.9	4.8
2006	14.4	21.4	27.2	26.6	#REF!	2.4	1.8
2007	-32.3	-31.7	-30.8	-31.5	#REF!	4.9	7.6
2008	5.0	-1.7	-7.4	-7.7	-1.8	-0.2	0.8

Source: Revenue Management Division, MFEM

Note: (1) Minimum living level refers to minimum wage required for an employee supporting a spouse and two children.

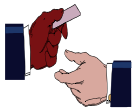
(2) Processing of returns for 1994 to 2008 is incomplete..

Banking Statistics



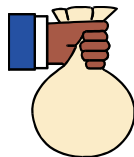
Assets & Liabilities

- ◆ Movements in assets and liabilities of the banking system show a decrease in net foreign assets for 2007/08, by 6.9% over the previous fiscal year.
- ◆ Offsetting the decrease in net foreign assets for the same period was the Net domestic credit for 2007/08 increasing by 14.0%.



Loans & Advances by Industry

- ◆ Loans and advances for 2007/08 increased by 14.1% (\$36.8 million) over the previous year.
- ◆ 47.3% (\$140.3 million) of total lending for the fiscal year 2007/08 is made up of Personal services, followed by the Hotels/Motels with 25.7% (\$76.2 million) and Wholesale and Retail trade 9.0% (\$26.8 million).



Money Supply

- ◆ Narrow money (M1) for the fiscal year 2007/08 increased by 4.4% when compared to the previous fiscal year. In the same period, Term and savings deposits and Broad money (M3) increased by 3.9% and 4.0% respectively.

Money Supply 1998/99 – 2007/08

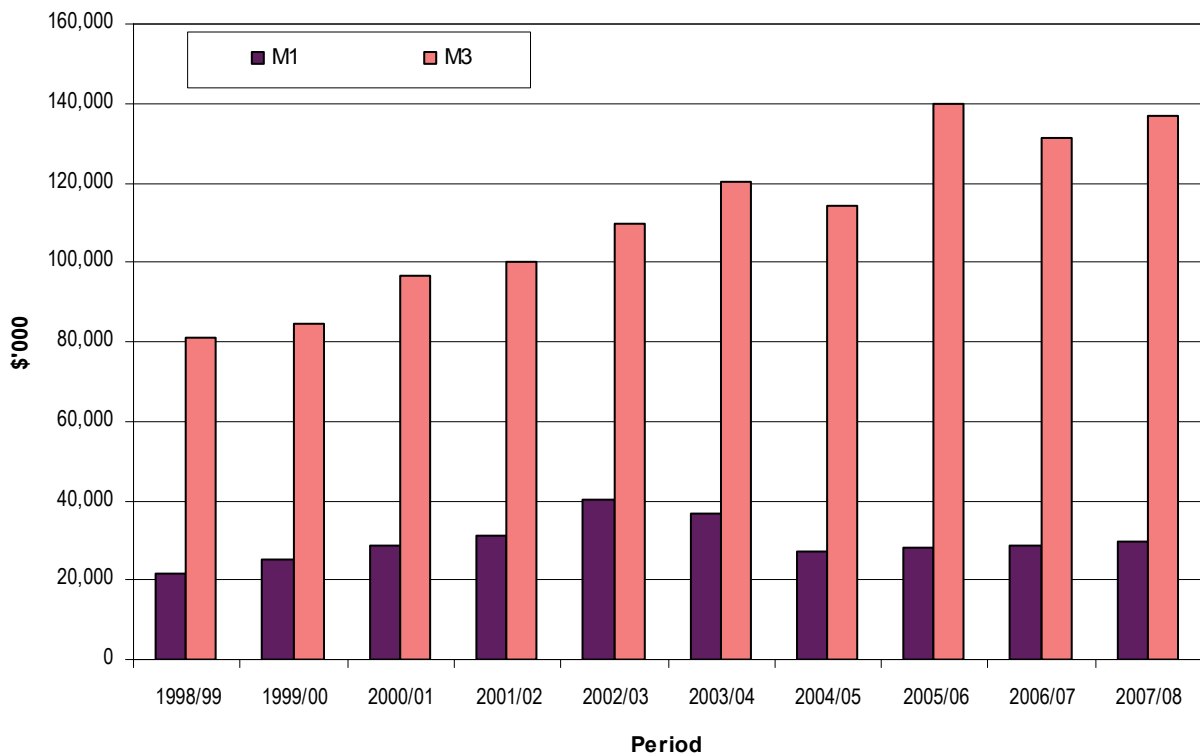


Table 8.1 Assets and Liabilities

Fiscal Year	NET FOREIGN ASSETS ¹	NET DOMESTIC CREDIT ²	Claims On			LIQUID LIABILITIES ³	Deposits			OTHER ITEMS (NET) ⁴	CAPITAL ACCOUNT
			Government (net)	Public Enterprises	Private Sector		Demand	Savings	Term		
\$'000											
1996/97	16,273	46,920	(1,910)	6,536	42,294	61,602	20,834	16,088	24,679	7,918	9,508
1997/98	17,760	50,412	(1,636)	3,321	48,727	69,055	19,550	16,554	32,951	9,714	8,831
1998/99	26,346	56,824	(818)	2,317	55,325	80,641	21,446	15,679	43,516	8,440	10,969
1999/00	28,578	59,769	(7,272)	1,794	65,247	84,508	24,945	18,902	40,661	12,712	16,551
2000/01	39,026	59,958	(16,916)	1,237	75,637	96,661	28,541	23,331	44,789	14,451	16,774
2001/02	36,238	74,388	(20,116)	868	93,636	99,794	30,916	23,670	45,208	12,441	13,213
2002/03	19,491	91,740	(33,966)	253	125,453	109,673	40,348	25,899	43,426	18,980	20,647
2003/04	(5,394)	133,318	(34,977)	44	168,251	120,167	36,819	25,150	58,198	19,562	27,522
2004/05	(17,347)	144,472	(48,349)	170	192,651	113,951	27,209	34,425	52,318	19,068	32,243
2005/06	(20,650)	188,092	(36,353)	140	224,305	139,498	27,845	36,475	75,178	5,401	33,346
2006/07	(21,476)	205,429	(51,202)	159	256,472	131,398	28,295	35,784	67,319	(14,687)	37,868
2007/08	(22,951)	235,111	(58,065)	470	292,706	136,632	29,534	39,121	67,977	(30,193)	45,335

Source: Banking Survey

1. Net foreign assets is the gross foreign assets less foreign liabilities of the financial institutions surveyed.
2. Net domestic credit represents net lending to government, gross lending to public enterprises and to the private sector by the financial institutions surveyed.
3. Liquid liabilities is total demand, savings and term deposits of the public enterprises and private sector held by the financial institutions surveyed.
4. Other items(net) represents all other assets and liabilities of the financial institutions surveyed including capital.

Table 8.2 Loans and Advances by Industry

Fiscal Year	All Industries	Agriculture & fishing	Wholesale & Retail trade	Hotels & motels	Transport & communication	Finance & business	Public Administration	Personal services	Other
(\$'000)									
1996/97	54,902	2,381	8,146	7,263	5,048	8,127	6,032	16,490	1,415
1997/98	57,516	2,672	8,342	9,466	2,347	11,370	4,313	17,244	1,762
1998/99	62,207	3,068	11,353	8,890	2,057	3,542	3,320	27,847	2,130
1999/00	70,118	3,216	9,324	15,572	2,830	11,293	4,373	21,615	1,895
2000/01	80,216	3,219	10,686	21,064	3,750	2,333	4,132	32,700	2,332
2001/02	98,550	4,287	12,841	27,624	4,037	1,742	3,643	40,492	3,883
2002/03	129,359	4,198	15,002	28,274	9,092	3,894	2,789	60,680	5,430
2003/04	171,638	3,364	21,458	47,023	9,708	4,622	2,341	75,021	8,100
2004/05	193,102	1,954	18,928	60,397	11,871	14,311	2,523	72,748	10,371
2005/06	226,999	1,648	23,776	67,746	11,499	11,047	2,174	98,453	10,656
2006/07	260,064	1,884	24,116	71,477	10,614	10,880	3,640	120,027	17,427
2007/08	296,851	1,997	26,777	76,221	10,355	18,033	1,791	140,354	21,324
Percentage change over the previous fiscal year									
1996/97	(5.7)	25.9	10.1	16.5	(25.8)	40.0	(23.3)	(20.2)	(11.2)
1997/98	4.8	12.2	2.4	30.3	(53.5)	39.9	(28.5)	4.6	24.5
1998/99	8.2	14.8	36.1	(6.1)	(12.4)	(68.8)	(23.0)	61.5	20.9
1999/00	12.7	4.8	(17.9)	75.2	37.6	218.8	31.7	(22.4)	(11.0)
2000/01	14.4	0.1	14.6	35.3	32.5	(79.3)	(5.5)	51.3	23.1
2001/02	22.9	33.2	20.2	31.1	7.7	(25.3)	(11.8)	23.8	66.5
2002/03	31.3	(2.1)	16.8	2.4	125.2	123.5	(23.4)	49.9	39.8
2003/04	32.7	(19.9)	43.0	66.3	6.8	18.7	(16.1)	23.6	49.2
2004/05	12.5	(41.9)	(11.8)	28.4	22.3	209.6	7.8	(3.0)	28.0
2005/06	17.6	(15.7)	25.6	12.2	-3.1	(22.8)	(13.8)	35.3	2.7
2006/07	14.6	14.3	1.4	5.5	(7.7)	(1.5)	67.4	21.9	63.5
2007/08	14.1	6.0	11.0	6.6	(2.4)	65.8	(50.8)	16.9	22.4

Source: Banking Survey

Table 8.3 Money Supply

Fiscal Year	Narrow Money (M1)			Broad Money (M3)	
	Notes & Coins in circulation	Demand Deposits	M1 Total	Term & Savings Deposits	M3 Total
	\$000				
1997/98	137	19,550	19,687	49,505	69,192
1998/99	137	21,446	21,583	59,195	80,778
1999/00	137	24,945	25,082	59,563	84,645
2000/01	137	28,541	28,678	68,120	96,798
2001/02	137	30,916	31,053	68,878	99,931
2002/03	137	40,348	40,485	69,325	109,810
2003/04	137	36,819	36,956	83,348	120,304
2004/05	137	27,209	27,345	86,742	114,088
2005/06	137	27,845	27,982	111,653	139,635
2006/07	137	28,295	28,432	103,103	131,535
2007/08	137	29,534	29,671	107,098	136,769
	Percentage change over the previous fiscal year				
1997/98	-	(6.2)	(6.1)	21.4	12.1
1998/99	-	9.7	9.6	19.6	16.7
1999/00	-	16.3	16.2	0.6	4.8
2000/01	-	14.4	14.3	14.4	14.4
2001/02	-	8.3	8.3	1.1	3.2
2002/03	-	30.5	30.4	0.6	9.9
2003/04	-	(8.7)	(8.7)	20.2	9.6
2004/05	-	(26.1)	(26.0)	4.1	(5.2)
2005/06	-	2.3	2.3	28.7	22.4
2006/07	-	1.6	1.6	(7.7)	(5.8)
2007/08	-	4.4	4.4	3.9	4.0

Source: Banking Survey

Table 8.4 Interest Rates - Deposits

Fiscal Year	Personal Savings Account Balance up to \$300				Fixed Term Deposits 3 months			
	ANZ	Westpac	CIDB	CISB	ANZ	Westpac	CIDB	CISB ¹
	BCI ²				BCI ²			
	(%)							
1997/98	2.00	2.00	2.00	3.00	5.50	6.25	6.25	8.00
1998/99	1.00	1.00	1.50	2.00	3.00	3.50	3.75	3.50
1999/00	1.00	1.00	1.25	2.00	3.00	3.50	3.25	3.50
2000/01	1.00	1.00	1.25	2.00	2.50	3.50	3.25	3.50
2001/02	1.00	1.00	1.25		2.25	2.75		3.25
2002/03	1.00	1.00	0.00		2.25	3.00		3.00
2003/04	1.00	1.00	0.00		2.25	3.00		3.00
2004/05	1.00	1.00	0.00		2.75	3.00		3.00
2005/06	1.00	1.00	0.00		2.75	3.00		3.00
2006/07	1.50	1.00	0.00		2.75	3.00		3.00
2007/08	1.50	1.00	0.00		2.75	3.00		3.00

Source: Banking Survey

Notes:

1. Rate is for 6 months

3. Bank of the Cook Islands starts operating 2001/02

Table 8.5 Interest Rates - Loans

Fiscal Year	Housing Loans Owner occupied			Business Loans Base rates only			Personal Loans Secured			
	ANZ	Westpac	CIDB	ANZ	Westpac	CIDB	ANZ	Westpac	CIDB	CISB ²
	BCI ³			BCI ³			BCI ³			
	(%)									
1996/97	13.50	13.50	13.00	13.25	13.50	13.50	19.25	19.50	15.50	19.00
1997/98	11.95	12.00	12.00	10.75	10.75	10.75	17.75	18.50	18.50	19.00
1998/99	10.75	10.75	10.75	9.25	9.25	9.25	16.50	16.50	16.50	19.00
1999/00	10.75	10.75	10.75	9.25	9.25	9.25	15.25	15.25	16.75	19.00
2000/01	10.75	10.75	9.75	9.25	9.25	12.75	15.25	15.25	16.50	19.00
2001/02	9.75	9.75	9.75	8.95	8.95	12.50	15.25	15.25	16.50	
2002/03	9.75	9.75	9.75	8.95	8.95	8.95	15.25	15.25	16.50	
2003/04	9.75	9.75	9.75	8.95	8.95	8.95	15.25	15.25	16.50	
2004/05	10.25	9.75	9.75	9.70	9.70	8.95	16.00	15.25	16.50	
2005/06	10.75	10.25	9.75	10.20	10.20	8.95	16.50	15.75	16.50	
2006/07	10.75	10.25	9.75	10.45	10.20	8.95	16.50	15.75	16.50	
2007/08	11.25	11.00	9.75	11.00	10.95	8.95	16.80	16.50	16.50	

Source: Banking Survey

Notes:

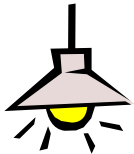
2. Unsecured

3. Bank of the Cook Islands starts operating 2001/02

Miscellaneous



Total value of building approvals rose by 3.0% (\$0.67 million) over last year but the total number of approvals fell by 14.1%. Residential buildings contributed to \$11.8 million of the total approvals, averaging to over \$100,000 per residential building.



Commercial or public establishments totaled \$11.1 million in 2008 an increase of 36.0% compared to 2007.

Total energy generated in the Cook Islands fell by 0.4% (148,000kWh) in 2008. Most of that decrease was experienced in Rarotonga but regardless of the decrease in usage, Rarotonga still maintained the biggest consumer of electricity. Major increases were noted for Aitutaki, Rakahanga, Manihiki and Atiu up by 34.3%, 33.3%, 26.8% and 20.5% respectively.



Total newly registered vehicles for 2008 was 1,350, a decrease of 298 (18.1%) vehicles compared to 2007. Contributing to this decrease is the drop in registrations for trucks & buses and cars, station wagons and vans by 32.3% and 24.8% respectively. Motorcycle registrations makes up 65.3% of all motor vehicle registration.



International flights out of Rarotonga during 2008 decreased by 18.4%. This decrease was attributed to the closure of the Fiji link in 2008 and the reduction of flights to Tahiti. The Los Angeles route is now open and in 2008 there were 64 flights. New Zealand remained the dominant destination for International flights.



The year 2008 was much drier than the last two years 2006 and 2007. Average temperature recorded for Penrhyn was 28.5°Celsius in 2008, slightly cooler when compared 29.0°Celsius to last year. Penrhyn also experienced dryer spells with total rainfall at its lowest for the last three years. Rarotonga experienced no change in average temperature and rainfall but total hours of sunshine recorded for Rarotonga took a slight increase by 0.2%. Aitutaki was much warmer and drier when compared to the last two years.

Table 9.1 Building Approvals

Calendar Year	Total		Residential		Commercial (*)	
	No.	Value (\$' 000)	No.	Value (\$' 000)	No.	Value (\$' 000)
1987	59	4,094	44	1,780	15	2,315
1988	63	2,599	42	1,944	21	655
1989	94	5,023	59	2,916	35	2,107
1990	91	7,726	67	2,629	24	5,096
1991	104	6,297	69	3,507	35	2,790
1992	208	10,446	168	7,605	40	2,841
1993	186	14,017	150	10,280	36	3,737
1994	62	5,863	49	3,119	13	2,744
1995	112	6,561	97	5,449	15	1,112
1996	102	5,300	70	3,028	32	2,272
1997	75	5,358	44	2,153	31	3,205
1998	164	8,430	147	5,611	17	2,819
1999	68	7,243	45	3,539	23	3,704
2000	102	10,613	64	4,079	38	6,534
2001	127	12,797	74	5,600	53	7,197
2002	140	20,417	74	8,354	66	12,063
2003	134	23,933	80	7,982	54	15,951
2004	111	12,566	75	6,174	36	6,392
2005	104	13,951	76	8,308	28	5,643
2006	157	21,532	121	13,883	36	7,649
2007	149	22,276	117	14,111	32	8,165
2008	128	22,948	113	11,846	15	11,102
Percentage change over the previous year						
1986	-1.1	157.7	-20.6	-0.1	54.2	338.9
1987	-35.2	-48.0	-18.5	9.1	-59.5	-62.9
1988	6.8	-36.5	-4.5	9.2	40.0	-71.7
1989	49.2	93.3	40.5	50.0	66.7	221.7
1990	-3.2	53.8	13.6	-9.8	-31.4	141.9
1991	14.3	-18.5	3.0	33.4	45.8	-45.3
1992	100.0	65.9	143.5	116.9	14.3	1.8
1993	-10.6	34.2	-10.7	35.2	-10.0	31.5
1994	-66.7	-58.2	-67.3	-69.7	-63.9	-26.6
1995	80.6	11.9	98.0	74.7	15.4	-59.5
1996	-8.9	-19.2	-27.8	-44.8	113.3	204.4
1997	-26.5	1.1	-37.1	-28.9	-3.1	41.1
1998	118.7	57.3	234.1	160.6	-45.2	-12.0
1999	-58.5	-14.1	-69.4	-36.9	35.3	31.4
2000	50.0	46.5	42.2	15.3	65.2	76.4
2001	24.5	20.6	15.6	37.3	39.5	10.1
2002	10.2	59.5	0.0	49.2	24.5	67.6
2003	-4.3	17.2	8.1	-4.5	-18.2	32.2
2004	-17.2	-47.5	-6.3	-22.7	-33.3	-59.9
2005	-6.3	11.0	1.3	34.6	-22.2	-11.7
2006	51.0	54.3	59.2	67.1	28.6	35.5
2007	-5.1	3.5	-3.3	1.6	-11.1	6.7
2008	-14.1	3.0	-3.4	-16.0	-53.1	36.0

Source: Physical Planning Division - MOWEPP

Note: (*) - Commercial establishments including Non Private accomodations and Industrial con

Table 9.2 Energy Generated of Selected Islands

Calendar Year	Cook Islands	Rarotonga	Aitutaki	Atiu	Mauke	Mangaia	Mitiaro	Penrhyn	Rakahanga	Manihiki	Palm-erston
	(kwh'000)										
1987	12,521	10,984	993	170	79	116	4	64	48	56	7
1988	14,309	12,574	1,069	194	92	168	30	74	31	70	7
1989	14,661	12,801	1,106	197	108	201	36	86	31	79	16
1990	13,176	11,348	1,060	174	133	221	35	78	37	75	15
1991	16,290	14,060	1,427	207	143	235	32	83	36	67	...
1992	17,254	14,848	1,508	223	158	263	53	116	35	45	5
1993	18,621	16,090	1,551	249	198	295	58	112	11	55	2
1994	19,488	16,779	1,566	302	215	302	71	124	16	113	...
1995	19,790	16,855	1,840	312	169	350	74	90	22	72	6
1996	19,840	17,046	1,756	226	138	347	71	93	41	111	11
1997	19,615	16,790	1,831	269	155	319	65	78	27	78	3
1998	19,822	17,224	1,643	293	166	308	78	86	22	...	2
1999	21,851	19,135	1,751	255	202	339	74	84	11
2000	24,697	21,367	2,231	359	189	363	83	87	18
2001	25,837	22,292	2,410	353	196	361	82	78	36	26	3
2002	27,715	23,998	2,393	335	166	391	114	95	36	185	2
2003	29,119	25,795	1,992	354	192	407	115	111	36	117	...
2004	29,758	26,297	2,012	389	250	422	110	116	28	134	...
2005	30,294	27,107	1,841	308	183	459	111	118	28	139	...
2006	32,154	28,390	2,345	316	218	465	115	121	30	154	...
2007	33,695	29,592	2,384	443	273	464	130	124	54	231	...
2008	33,547	28,471	3,201	534	246	485	121	124	72	293	...
	Percentage change over the previous year										
1987	-0.3	0.3	-5.4	21.4	-7.1	-27.5	0.0	3.2	6.7	3.7	-12.5
1988	14.3	14.5	7.7	14.1	16.5	44.8	650.0	15.6	-35.4	25.0	0.0
1989	2.5	1.8	3.5	1.5	17.4	19.6	20.0	16.2	0.0	12.9	128.6
1990	-10.1	-11.4	-4.2	-11.7	23.1	10.0	-2.8	-9.3	19.4	-5.1	-6.3
1991	23.6	23.9	34.6	19.0	7.5	6.3	-8.6	6.4	-2.7	-10.7	...
1992	5.9	5.6	5.7	7.7	10.5	11.9	65.6	39.8	-2.8	-32.8	...
1993	7.9	8.4	2.9	11.7	25.3	12.2	9.4	-3.4	-68.6	22.2	-60.0
1994	4.7	4.3	1.0	21.3	8.6	2.4	22.4	10.7	45.5	105.5	...
1995	1.5	0.5	17.5	3.3	-21.4	15.9	4.2	-27.4	37.5	-36.3	...
1996	0.3	1.1	-4.6	-27.6	-18.3	-0.9	-4.1	3.3	86.4	54.2	83.3
1997	-1.1	-1.5	4.3	19.0	12.3	-8.1	-8.5	-16.1	-34.1	-29.7	-72.7
1998	1.1	2.6	-10.3	8.9	7.1	-3.4	20.0	10.3	-18.5	...	-33.3
1999	10.2	11.1	6.6	-13.0	21.7	10.1	-5.1	-2.3	-50.0
2000	13.0	11.7	27.4	40.8	-6.4	7.1	12.2	3.6	63.6
2001	4.6	4.3	8.0	-1.7	3.7	-0.6	-1.2	-10.3	100.0
2002	7.3	7.7	-0.7	-5.1	-15.3	8.3	39.0	21.8	0.0	611.5	-33.3
2003	5.1	7.5	-16.8	5.7	15.7	4.1	0.9	16.8	0.0	-36.8	...
2004	2.2	1.9	1.0	9.9	30.2	3.7	-4.3	4.5	-22.2	14.5	...
2005	1.8	3.1	-8.5	-20.8	-26.8	8.8	0.9	1.7	0.0	3.7	...
2006	6.1	4.7	27.4	2.6	19.1	1.3	3.6	2.5	7.1	10.8	...
2007	4.8	4.2	1.7	40.2	25.2	-0.2	13.0	2.5	80.0	50.0	...
2008	-0.4	-3.8	34.3	20.5	-9.7	4.4	-6.8	0.0	33.3	26.8	...

Source: Energy Division - MOWEPP, and Te Aponga Uira, Rarotonga.

Table 9.3 Newly Registered Vehicles

Calendar Year	Total	Newly Registered Vehicles				
		Motor Cycle	Cars, S/Wagons & Jeeps	Trucks & Buses	Vans & Other Vehicles Pickups	
1987	728	450	106	35	103	34
1988	686	439	114	15	95	23
1989	916	530	199	22	150	15
1990	806	425	159	30	144	48
1991	824	396	188	46	142	52
1992	1,570	1,052	288	44	129	57
1993	911	638	110	45	113	5
1994	820	529	108	54	119	10
1995	491	357	54	15	59	6
1996	447	314	47	3	79	4
1997	639	375	133	6	123	2
1998	622	404	106	18	92	2
1999	965	605	212	25	122	1
2000	1,256	796	273	63	115	9
2001	1,698	1,115	361	67	149	6
2002	1,254	809	239	55	144	7
2003	1,641	984	400	55	192	10
2004	1,588	1,151	293	41	89	14
2005	1,660	1,086	350	58	131	35
2006	1,862	1,323	307	55	141	36
2007	1,648	1,047	355	65	163	18
2008	1,350	882	267	44	137	20
Percentage change over the previous year						
1988	-5.8	-2.4	7.5	-57.1	-7.8	-32.4
1990	-12.0	-19.8	-20.1	36.4	-4.0	220.0
1991	2.2	-6.8	18.2	53.3	-1.4	8.3
1992	90.5	165.7	53.2	-4.3	-9.2	9.6
1993	-42.0	-39.4	-61.8	2.3	-12.4	-91.2
1994	-10.0	-17.1	-1.8	20.0	5.3	100.0
1995	-40.1	-32.5	-50.0	-72.2	-50.4	-40.0
1996	-9.0	-12.0	-13.0	-80.0	33.9	-33.3
1997	43.0	19.4	183.0	100.0	55.7	-50.0
1998	-2.7	7.7	-20.3	200.0	-25.2	0.0
1999	55.1	49.8	100.0	38.9	32.6	-50.0
2000	30.2	31.6	28.8	152.0	-5.7	800.0
2001	35.2	40.1	32.2	6.3	29.6	-33.3
2002	-26.1	-27.4	-33.8	-17.9	-3.4	16.7
2003	30.9	21.6	67.4	0.0	33.3	42.9
2004	-3.2	17.0	-26.8	-25.5	-53.6	40.0
2005	4.5	-5.6	19.5	41.5	47.2	150.0
2006	12.2	21.8	-12.3	-5.2	7.6	2.9
2007	-11.5	-20.9	15.6	18.2	15.6	-50.0
2008	-18.1	-15.8	-24.8	-32.3	-16.0	11.1

Source: Bank of the Cook Islands (BCI), Rarotonga.

Table 9.4 Aircraft Movements⁽¹⁾

Calendar Year	Total Flights	From Rarotonga to:						
		Fiji	Tahiti	New Zealand	Apia	Honolulu	Los Angeles	Other
1987	463	21	59	209	102	-	-	72
1988	442	52	52	175	128	-	-	35
1989	420	51	86	121	103	52	-	7
1990	385	49	49	136	48	52	-	51
1991	544	52	146	157	88	84	-	17
1992	546	52	103	163	92	63	-	73
1993	573	53	152	157	83	57	-	71
1994	548	47	180	162	80	50	-	29
1995	503	51	115	169	77	50	-	41
1996	323	53	53	156	-	53	-	8
1997	437	57	81	187	-	-	52	60
1998	384	52	105	167	-	-	60	-
1999	486	93	101	228	-	-	60	4
2000	631	63	92	370	-	-	76	30
2001	559	52	54	324	-	-	31	98
2002	453	51	62	304	-	7	18	11
2003	631	51	152	364	-	62	2	-
2004	670	52	153	371	-	94	-	-
2005	765	54	156	555	-	-	-	-
2006	894	52	155	687	-	-	-	-
2007	844	44	111	663	-	26	-	-
2008	689	-	83	542	-	64	-	-
Percentage change over the previous year								
1987	-4.7	-59.6	-33.0	36.6	131.8	..	-	-51.7
1988	-4.5	147.6	-11.9	-16.3	25.5	..	-	-51.4
1989	-5.0	-1.9	65.4	-30.9	-19.5	..	-	-80.0
1990	-8.3	-3.9	-43.0	12.4	-53.4	-	-	628.6
1991	41.3	6.1	198.0	15.4	83.3	61.5	-	-66.7
1992	0.4	0.0	-29.5	3.8	4.5	-25.0	-	329.4
1993	4.9	1.9	47.6	-3.7	-9.8	-9.5	-	-2.7
1994	-4.4	-11.3	18.4	3.2	-3.6	-12.3	-	-59.2
1995	-8.2	8.5	-36.1	4.3	-3.8	-	-	41.4
1996	-35.8	3.9	-53.9	-7.7	-	6.0	-	-80.5
1997	35.3	7.5	52.8	19.9	-	-	-	650.0
1998	-12.1	-8.8	29.6	-10.7	-	-	15.4	-100.0
1999	26.6	78.8	-3.8	36.5	-	-	-	-
2000	29.8	-32.3	-8.9	62.3	-	-	26.7	650.0
2001	-11.4	-17.5	-41.3	-12.4	-	-	-59.2	226.7
2002	-19.0	-1.9	14.8	-6.2	-	-	-41.9	-88.8
2003	39.3	0.0	145.2	19.7	-	785.7	-88.9	-100.0
2004	6.2	2.0	0.7	1.9	-	51.6	-100.0	-
2005	14.2	3.8	2.0	49.6	-	-100.0	-	-
2006	16.9	-3.7	-0.6	23.8	-	-	-	-
2007	-5.6	-15.4	-28.4	-3.5	-	-	-	-
2008	-18.4	-100.0	-25.2	-18.3	-	146.2	-	-

Source: Air New Zealand and Air Rarotonga.

Note: (1) - International aircraft movement from Rarotonga and first stop only.