

International Visitor Arrivals Federated States of Micronesia *2006*



March 2007

Statistics Unit
Division of Economic Planning and Statistics
Department of Economic Affairs
National Government
Palikir, Pohnpei, FM 96941



International Visitor Arrivals
Federated States of Micronesia

2006

March 2007

Statistics Unit
Division of Economic Planning and Statistics
Department of Economic Affairs
National Government
Palikir, Pohnpei, FM 96941



DEPARTMENT OF ECONOMIC AFFAIRS

Federated States of Micronesia

P.O. Box PS-12

Palikir, Pohnpei FM 96941

Secretary's Message

The Division of Economic Planning and Statistics hereby presents to the people of the Federated States of Micronesia (FSM) the 2007 International Visitor Arrivals Report. This report is another series of publication providing reliable source of information to assist in the planning and decision making process for the Tourism sector.

The data in this publication are based on visitor declaration forms that are collected by Immigration Officials upon arrival which include only non-FSM visitors. This publication presents 'monthly' data from October 2005 to December 2006 for each state as well as the FSM by 'purpose of visit' and 'region of citizenship'. Annual data is also presented from 1997 to 2006.

I would like to extend a special note of appreciation to the Department of Justice, the Division of Immigration and Labor for the cooperative undertaking between our Departments in ensuring the collection of information that are presented in this publication. I urge everyone to use this publication as a tool for formulating policies and planning of projects and programs within the tourism industry.

Once again, the Department of Economic Affairs welcomes any observations and constructive comments which you may have to improve the quality and the analysis of the statistical information contained in this report.

Kamagar, Kinisou, Kalahngan, Kulo and Thank you all.

A handwritten signature in black ink, appearing to read "A. Susaia".

Akillino H. Susaia

Secretary

Department of Economic Affairs



DEPARTMENT OF ECONOMIC AFFAIRS

Federated States of Micronesia

P.O. Box PS-12

Palikir, Pohnpei FM 96941

Acknowledgement

The Division of Economic Planning and Statistics within the FSM Department of Economic Affairs has published another publication for the Federated States of Micronesia. This publication serves the need for statistical information and is officially called the "2007 International Visitors Arrival Report". The data in this publication are based on visitor declaration forms that are collected by Immigration Officials upon arrival and include only Non-FSM visitor. This publication presents 'monthly' data from October 2005 to December 2006 for each state as well as the FSM by 'purpose of visit' and 'region of citizenship' for use in our development planning efforts. Annual data is also presented from 1997 to 2006.

I would like to acknowledge sincere appreciation to the Department of Justice, Division of Immigration of the National Government as well as the State Government that provided support in making this publication possible. I would also like to commend the staff of the Division of Economic Planning and Statistics for their hard work and dedication in publishing this product.

I urge everyone to utilize the statistics presented in this publication in order to effectively respond to the development needs of our nation now and in the future and welcome any comment that may help in improving future publications.

Kamagar, Kinisou, Kalahngan, Kulo and Thank you all.

A handwritten signature in black ink, appearing to read "Stoney S. Yaulung".

Stoney S. Yaulung
Deputy Assistant Secretary for Statistics
Department of Economic Affairs

Contents	Page
Secretary’s Message.....	iii
Acknowledgement	v
Table of Contents.....	vii
Technical Notes on FSM International Visitor Arrivals Data	viii
 <i>Monthly International and Interstate Visitor Arrivals</i>	
Chart 1. Monthly International Arrivals by Purpose of Visit, FSM: October 2005-December 2006.....	2
Table 1: Monthly International Visitor Arrivals to FSM: October 2005-December 2006	3
Table 2: Monthly International and Interstate Visitor Arrivals to Kosrae: October 2005-December 2006.....	4
Table 3: Monthly International and Interstate Visitor Arrivals to Pohnpei: October 2005-December 2006.....	5
Table 4: Monthly International and Interstate Visitor Arrivals to Chuuk: October 2005-December 2006	6
Table 5: Monthly International and Interstate Visitor Arrivals to Yap: October 2005-December 2006	7
 <i>Annual International and Interstate Visitor Arrivals</i>	
Chart 2. Annual International Visitor Arrivals by Purpose of Visit and Year, FSM: 1997-2006.....	10
Table 6: Annual International Visitor Arrivals to FSM, Calendar Year: 1997-2006.....	11
Chart 3. International and Interstate Visitor Arrivals by Purpose of Visit and Year, Kosrae: 1997-2006	12
Table 7: Annual International and Interstate Visitor Arrivals to Kosrae, Calendar Year: 1997-2006.....	13
Chart 4. International and Interstate Visitor Arrivals by Purpose of Visit and Year, Pohnpei: 1997-2006.....	14
Table 8: Annual International and Interstate Visitor Arrivals to Pohnpei, Calendar Year: 1997-2006.....	15
Chart 5. International and Interstate Visitor Arrivals by Purpose of Visit and Year, Chuuk: 1997-2006	16
Table 9: Annual International and Interstate Visitor Arrivals to Chuuk, Calendar Year: 1997-2006	17
Chart 6. International and Interstate Visitor Arrivals by Purpose of Visit and Year: Yap: 1997-2006.....	18
Table 10: Annual International and Interstate Visitor Arrivals to Yap, Calendar Year: 1997-2006	19
Appendix A: Purpose of Visit Classification.....	20

Technical Notes on FSM International & Interstate Visitor Arrivals data

Data source:

The data are based on visitor declarations to immigration officials upon their arrival into each state. FSM citizen are not required to make arrival declarations and are excluded from the statistics.

Data presentation:

The tables present non-FSM visitor arrivals to each of the **four states** and for the whole of **the FSM**. Table 1 presents international visitor arrivals (or arrivals from countries outside the FSM) to the FSM while tables 2 to 5 present both international and interstate (or arrivals from within the four states) visitor arrivals. Therefore, the total for the whole FSM (Table 1) will not match the sum of the four states (Tables 2 to 5) because in the FSM table (Table 1) each international visitor arrival is counted only once but may be counted several times in each State's tables depending on the number of arrivals incurred.

The tables also present visitors by 'purpose of visit' and 'region of citizenship'. '**Purpose of visit**' includes four main categories; 1) 'Tourism and visitors', 2) 'Business and employment', 3) 'Volunteer, religious etc' and 4) 'Seamen and crew'. Dependents are included in the same purpose as their spouse or parents. Further details are given in Appendix A. Category 'Other' is temporarily added for the 'purpose of visit' that are unclear as well as the undefined cases in Pohnpei and Chuuk for 2006 which cannot be resolved in time of this publication. These maybe adjusted in the next publication. **Region of Citizenship** shows the individual countries that are important sources of visitors to the FSM, such as the USA and Japan. Other countries are grouped into regions such as Asia, Europe, Pacific Islands etc.

Customized data and further information

The tables can be supplied as excel spreadsheets extending back to 1996.

For further information please contact Mr. Stoney Taulung, Deputy Assistant Secretary for Statistics Unit, FSM Department of Economic Affairs Palikir, Pohnpei at Telephone number (691) 320-2820.

Monthly International and Interstate Visitor Arrivals
(October 2005 to December 2006)

**Chart 1. Monthly International Visitor Arrivals By Purpose of Visit, FSM:
October 2005 - December 2006**

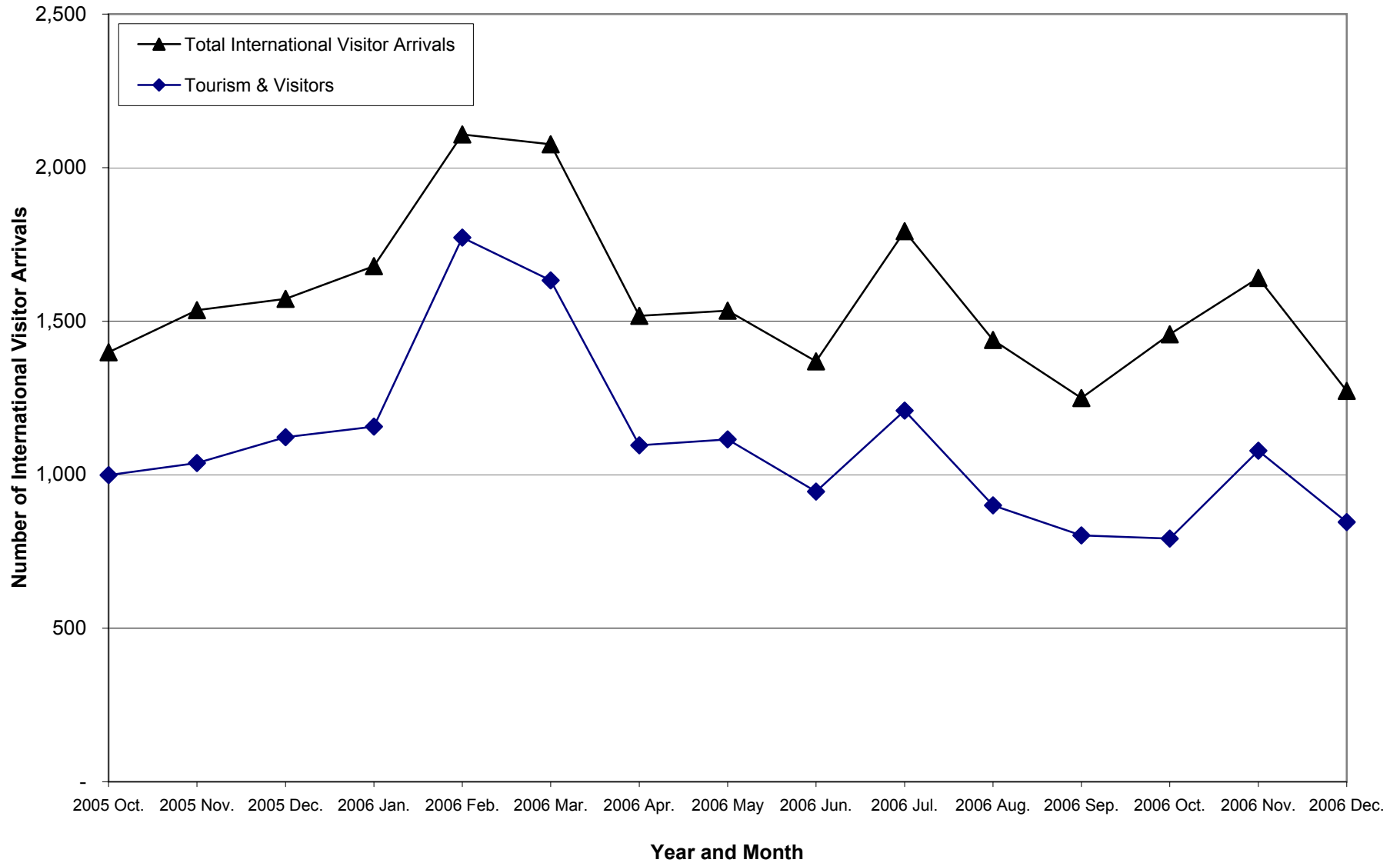


Table 1: Monthly International Visitor ¹ Arrivals to FSM:

October 2005 to December 2006

Purpose and Citizenship	2005 Oct.	2005 Nov.	2005 Dec.	2006 Jan.	2006 Feb.	2006 Mar.	2006 Apr.	2006 May	2006 Jun.	2006 Jul.	2006 Aug.	2006 Sep.	2006 Oct.	2006 Nov.	2006 Dec.
By purpose															
Tourism & Visitors	999	1,038	1,122	1,157	1,772	1,633	1,096	1,115	945	1,209	900	802	792	1,078	846
Business & Employment	334	453	376	421	292	362	353	346	321	462	397	344	499	424	308
Volunteer, Religious, etc.	37	25	30	80	18	36	29	36	45	62	90	61	80	56	33
Seamen & crew	29	20	45	21	26	45	39	37	58	60	52	43	47	35	30
Other ³	-	-	-	-	-	-	-	-	-	-	-	-	39	48	56
Total	1,399	1,536	1,573	1,679	2,108	2,076	1,517	1,534	1,369	1,793	1,439	1,250	1,457	1,641	1,273
By region of citizenship															
Total International Visitor Arrivals															
Asia	107	103	130	105	79	116	104	142	154	184	149	152	110	124	106
Australia	109	95	92	75	100	84	101	85	61	64	119	129	97	87	75
Canada	21	16	46	15	25	22	23	13	6	19	10	22	7	24	17
Europe	127	236	162	201	482	558	153	103	43	104	152	82	110	280	130
Japan	265	236	404	227	386	245	217	212	191	444	256	257	224	239	173
New Zealand	13	20	11	8	26	19	12	11	15	14	5	17	23	25	8
Pacific Islands	51	126	92	81	72	108	45	141	99	179	92	67	112	81	81
Philippines	117	130	107	94	115	117	99	126	127	103	122	101	114	114	115
USA	584	570	520	855	817	797	756	698	667	671	527	417	641	653	554
Other	5	4	9	18	6	10	7	3	6	11	7	6	19	14	14
Total	1,399	1,536	1,573	1,679	2,108	2,076	1,517	1,534	1,369	1,793	1,439	1,250	1,457	1,641	1,273
Tourism & Visitors only															
Asia	71	42	42	60	56	63	58	71	95	109	73	51	48	64	51
Australia	92	54	64	48	87	65	78	57	38	49	86	95	66	61	61
Canada	9	13	37	10	25	16	10	9	3	15	4	21	2	17	14
Europe	115	227	135	181	471	542	132	82	30	91	124	69	93	261	117
Japan	227	203	359	177	360	224	179	197	165	390	219	226	185	209	144
New Zealand	8	6	3	3	19	10	4	3	6	8	2	13	8	16	5
Pacific Islands	31	37	52	35	52	53	24	100	60	73	41	36	30	31	62
Philippines	19	29	30	17	12	29	17	32	26	22	15	15	26	18	23
USA	425	426	392	611	685	621	589	561	519	444	333	274	319	390	359
Other	2	1	8	15	5	10	5	3	3	8	3	2	15	11	10
Total	999	1,038	1,122	1,157	1,772	1,633	1,096	1,115	945	1,209	900	802	792	1,078	846
Total less Tourism & Visitors															
Asia	36	61	88	45	23	53	46	71	59	75	76	101	62	60	55
Australia	17	41	28	27	13	19	23	28	23	15	33	34	31	26	14
Canada	12	3	9	5	-	6	13	4	3	4	6	1	5	7	3
Europe	12	9	27	20	11	16	21	21	13	13	28	13	17	19	13
Japan	38	33	45	50	26	21	38	15	26	54	37	31	39	30	29
New Zealand	5	14	8	5	7	9	8	8	9	6	3	4	15	9	3
Pacific Islands	20	89	40	46	20	55	21	41	39	106	51	31	82	50	19
Philippines	98	101	77	77	103	88	82	94	101	81	107	86	88	96	92
USA	159	144	128	244	132	176	167	137	148	227	194	143	322	263	195
Other	3	3	1	3	1	-	2	-	3	3	4	4	4	3	4
Total	400	498	451	522	336	443	421	419	424	584	539	448	665	563	427

Source: Division of Immigration and Labor, FSM Dept. of Justice.

Note: ¹ Exclude FSM Citizens; ² 3 tourist ships arrived in Feb. and March 2006; ³ Include other and undefined purposes in 2006.

Table 2: Monthly International and Interstate Visitor Arrivals to Kosrae ¹:

October 2005 to December 2006

Purpose and Citizenship	2005 Oct.	2005 Nov.	2005 Dec.	2006 Jan.	2006 Feb. ²	2006 Mar.	2006 Apr.	2006 May	2006 Jun.	2006 Jul.	2006 Aug.	2006 Sep.	2006 Oct.	2006 Nov.	2006 Dec.
By purpose															
Tourism & Visitors	37	45	61	81	355	74	40	67	79	119	110	42	43	82	81
Business & Employment	58	98	28	65	101	84	38	59	25	49	65	19	54	48	37
Volunteer, Religious, etc.	7	-	5	4	7	10	6	4	8	11	2	3	32	5	1
Seamen & crew	-	-	-	1	1	-	3	-	-	4	-	-	-	1	4
Total	102	143	94	151	464	168	87	130	112	183	177	64	144	143	125
By region of citizenship															
Internat'l & Interstate Visitor Arrivals															
Asia	4	3	3	3	8	4	1	5	4	6	4	2	2	11	4
Australia	3	2	8	9	16	6	5	4	7	9	5	4	8	7	12
Canada	2	2	2	3	5	2	4	-	-	3	-	2	-	3	-
Europe	10	9	8	14	277	4	3	4	2	8	6	1	6	17	6
Japan	17	15	5	17	23	9	10	10	2	57	30	4	10	6	13
New Zealand	-	1	-	-	3	2	-	1	-	3	1	1	1	9	1
Pacific Islands	5	27	12	14	13	15	7	10	11	20	15	5	34	4	13
Philippines	16	21	6	7	21	12	6	12	9	9	21	12	10	11	8
USA	45	61	50	84	98	114	50	84	76	66	94	33	73	75	66
Other	-	2	-	-	-	-	1	-	1	2	1	-	-	-	2
Total	102	143	94	151	464	168	87	130	112	183	177	64	144	143	125
Tourism & Visitors only															
Asia	1	1	2	-	2	1	-	-	3	1	-	1	1	3	2
Australia	2	-	6	7	10	1	-	1	5	6	3	-	2	4	12
Canada	2	2	-	2	4	-	-	-	-	2	-	1	-	1	-
Europe	10	7	5	11	274	2	2	3	2	4	3	1	4	14	3
Japan	9	6	4	5	15	5	10	10	2	47	23	4	6	5	9
New Zealand	-	-	-	-	1	1	-	-	-	1	-	1	1	5	1
Pacific Islands	1	6	12	11	8	7	4	9	8	16	8	5	6	3	8
Philippines	1	1	-	-	2	-	-	-	1	-	2	5	3	2	1
USA	11	22	32	45	39	57	24	44	57	40	71	24	20	45	45
Other	-	-	-	-	-	-	-	-	1	2	-	-	-	-	-
Total	37	45	61	81	355	74	40	67	79	119	110	42	43	82	81
Total less Tourism & Visitors															
Asia	3	2	1	3	6	3	1	5	1	5	4	1	1	8	2
Australia	1	2	2	2	6	5	5	3	2	3	2	4	6	3	-
Canada	-	-	2	1	1	2	4	-	-	1	-	1	-	2	-
Europe	-	2	3	3	3	2	1	1	-	4	3	-	2	3	3
Japan	8	9	1	12	8	4	-	-	-	10	7	-	4	1	4
New Zealand	-	1	-	-	2	1	-	1	-	2	1	-	-	4	-
Pacific Islands	4	21	-	3	5	8	3	1	3	4	7	-	28	1	5
Philippines	15	20	6	7	19	12	6	12	8	9	19	7	7	9	7
USA	34	39	18	39	59	57	26	40	19	26	23	9	53	30	21
Other	-	2	-	-	-	-	1	-	-	-	1	-	-	-	2
Total	65	98	33	70	109	94	47	63	33	64	67	22	101	61	44

Source: Division of Immigration and Labor, FSM Dept. of Justice.

Note: ¹Visitor Arrivals by State Include both int'l and interstate arrivals; ²A tourist ship arrived in Kosrae in Feb. 2006.

Table 3: Monthly International and Interstate Visitor Arrivals to Pohnpei:
October 2005 to December 2006

Purpose and Citizenship	2005 Oct.	2005 Nov.	2005 Dec.	2006 Jan.	2006 Feb.¹	2006 Mar.	2006 Apr.	2006 May	2006 Jun.	2006 Jul.	2006 Aug.	2006 Sep.	2006 Oct.	2006 Nov.	2006 Dec.
By purpose															
Tourism ¹ & Visitors	344	327	419	436	848	371	363	401	447	475	322	248	291	416	381
Business & Employment	217	270	307	313	185	282	231	253	236	361	278	206	319	267	187
Volunteer, Religious, etc.	19	20	18	31	10	12	23	20	24	36	57	44	19	27	18
Seamen & crew	34	22	48	22	30	45	38	44	58	62	53	43	47	34	18
Other ²	-	-	-	-	-	-	-	-	-	-	-	-	22	28	46
Total	614	639	792	802	1,073	710	655	718	765	934	710	541	698	772	650
By region of citizenship															
Internat'l & Interstate Visitor Arrivals															
Asia	82	72	119	74	59	98	70	87	129	109	98	89	77	93	64
Australia	46	63	66	61	47	55	41	34	42	38	38	43	56	50	51
Canada	12	4	12	7	9	8	16	7	3	7	5	5	4	6	3
Europe	17	21	58	42	293	26	34	30	24	19	35	28	29	134	21
Japan	109	92	118	106	230	80	89	82	76	192	115	83	84	79	78
New Zealand	9	16	11	6	19	16	10	10	9	9	5	7	17	14	5
Pacific Islands	27	76	71	54	29	59	25	66	68	129	59	33	58	59	61
Philippines	75	79	71	70	76	82	78	86	88	81	70	56	73	65	71
USA	235	213	260	370	307	285	288	316	323	342	280	193	295	269	292
Other	2	3	6	12	4	1	4	-	3	8	5	4	5	3	4
Total	614	639	792	802	1,073	710	655	718	765	934	710	541	698	772	650
Tourism & Visitors only															
Asia	48	25	38	35	39	55	40	46	82	45	40	32	24	43	22
Australia	32	25	40	34	39	31	19	15	23	24	10	16	30	28	40
Canada	2	2	3	4	8	3	3	4	-	4	-	2	1	3	1
Europe	9	16	32	34	286	13	22	11	13	8	18	15	15	124	16
Japan	82	76	78	73	206	55	67	65	54	155	85	64	55	59	60
New Zealand	3	5	2	1	12	5	1	1	5	3	1	3	4	9	2
Pacific Islands	11	16	31	16	13	21	11	32	35	34	21	22	18	19	48
Philippines	17	23	26	20	13	26	23	26	21	19	11	7	16	10	13
USA	140	139	164	210	230	162	176	201	214	177	136	87	128	121	178
Other	-	-	5	9	2	-	1	-	-	6	-	-	-	-	1
Total	344	327	419	436	848	371	363	401	447	475	322	248	291	416	381
Total less Tourism & Visitors															
Asia	34	47	81	39	20	43	30	41	47	64	58	57	53	50	42
Australia	14	38	26	27	8	24	22	19	19	14	28	27	26	22	11
Canada	10	2	9	3	1	5	13	3	3	3	5	3	3	3	2
Europe	8	5	26	8	7	13	12	19	11	11	17	13	14	10	5
Japan	27	16	40	33	24	25	22	17	22	37	30	19	29	20	18
New Zealand	6	11	9	5	7	11	9	9	4	6	4	4	13	5	3
Pacific Islands	16	60	40	38	16	38	14	34	33	95	38	11	40	40	13
Philippines	58	56	45	50	63	56	55	60	67	62	59	49	57	55	58
USA	95	74	96	160	77	123	112	115	109	165	144	106	167	148	114
Other	2	3	1	3	2	1	3	-	3	2	5	4	5	3	3
Total	270	312	373	366	225	339	292	317	318	459	388	293	407	356	269

Source: Division of Immigration and Labor, FSM Dept. of Justice.

Note: ¹ Three tourist ships arrived in Pohnpei in February 2006; ² Include other and undefined purposes in 2006 only.

Table 4: Monthly International and Interstate Visitor Arrivals to Chuuk:

October 2005 to December 2006

Purpose and Citizenship	2005 Oct.	2005 Nov.	2005 Dec.	2006 Jan.	2006 Feb.	2006 Mar. ¹	2006 Apr.	2006 May	2006 Jun.	2006 Jul.	2006 Aug.	2006 Sep.	2006 Oct.	2006 Nov.	2006 Dec.
By purpose															
Tourism ¹ & Visitors	453	365	278	421	499	601	404	471	371	498	388	377	312	382	260
Business & Employment	67	54	60	61	50	37	58	69	33	56	71	111	64	76	53
Volunteer, Religious, etc.	12	8	8	25	12	13	7	11	12	6	19	9	14	13	13
Seamen & crew	4	-	-	-	-	-	4	-	1	-	-	-	-	-	1
Other ²		-	-	-	-	-	-	-	-	-	-	-	2	13	8
Total	536	427	346	507	561	651	473	551	417	560	478	497	392	484	335
By region of citizenship															
Internat'l & Interstate Visitor Arrivals															
Asia	17	10	7	26	13	11	29	58	29	48	18	49	16	19	26
Australia	58	27	21	21	24	35	61	40	24	29	73	88	33	27	11
Canada	3	5	17	4	11	6	3	1	-	5	1	16	2	10	6
Europe	43	83	35	72	80	60	40	22	9	41	54	44	28	46	40
Japan	121	95	88	66	129	106	70	85	110	153	111	99	95	131	53
New Zealand	8	2	3	1	6	7	3	3	2	5	2	7	4	1	2
Pacific Islands	15	6	5	10	12	13	9	53	19	22	18	31	8	10	7
Philippines	54	43	36	37	53	40	31	54	29	43	45	34	35	32	30
USA	216	154	133	269	233	372	223	235	193	213	156	127	170	204	160
Other	1	2	1	1	-	1	4	-	2	1	-	2	1	4	-
Total	536	427	346	507	561	651	473	551	417	560	478	497	392	484	335
Tourism & Visitors only															
Asia	13	5	2	16	9	5	14	30	15	35	8	9	11	12	19
Australia	53	26	15	18	23	34	55	38	22	28	71	83	32	26	11
Canada	1	5	17	3	10	5	2	1	-	5	-	16	1	9	6
Europe	43	81	34	63	78	55	37	19	7	40	50	42	26	39	36
Japan	116	91	77	55	125	105	63	82	107	150	96	93	89	125	47
New Zealand	5	-	1	1	5	6	2	3	2	3	1	7	3	1	1
Pacific Islands	12	4	5	5	12	11	9	50	18	20	11	10	3	5	4
Philippines	6	8	1	5	7	8	2	15	8	9	6	2	6	5	3
USA	203	144	125	254	230	371	216	233	191	207	145	113	141	157	133
Other	1	1	1	1	-	1	4	-	1	1	-	2	-	3	-
Total	453	365	278	421	499	601	404	471	371	498	388	377	312	382	260
Total less Tourism & Visitors															
Asia	4	5	5	10	4	6	15	28	14	13	10	40	5	7	7
Australia	5	1	6	3	1	1	6	2	2	1	2	5	1	1	-
Canada	2	-	-	1	1	1	1	-	-	-	1	-	1	1	-
Europe	-	2	1	9	2	5	3	3	2	1	4	2	2	7	4
Japan	5	4	11	11	4	1	7	3	3	3	15	6	6	6	6
New Zealand	3	2	2	-	1	1	1	-	-	2	1	-	1	-	1
Pacific Islands	3	2	-	5	-	2	-	3	1	2	7	21	5	5	3
Philippines	48	35	35	32	46	32	29	39	21	34	39	32	29	27	27
USA	13	10	8	15	3	1	7	2	2	6	11	14	29	47	27
Other	-	1	-	-	-	-	-	-	1	-	-	-	1	1	-
Total	83	62	68	86	62	50	69	80	46	62	90	120	80	102	75

Source: Division of Immigration and Labor, FSM Dept. of Justice.

Note: ¹ A tourist ship arrived in Chuuk in March 2006; ² Include other and undefined purposes in 2006 only.

Table 5: Monthly International and Interstate Visitor Arrivals to Yap:

October 2005 to December 2006

Purpose and Citizenship	2005 Oct.	2005 Nov.	2005 Dec.	2006 Jan.	2006 Feb.	2006 Mar. ²	2006 Apr.	2006 May	2006 Jun.	2006 Jul.	2006 Aug.	2006 Sep.	2006 Oct.	2006 Nov.	2006 Dec.
By purpose															
Tourism & Visitors	252	417	477	370	482	793	397	317	210	316	213	181	248	265	238
Business & Employment	91	122	53	85	66	68	117	64	92	88	83	73	97	66	65
Volunteer, Religious, etc.	11	8	12	31	4	11	3	13	12	15	15	10	16	12	4
Seamen & crew	-	-	1	-	5	-	-	-	-	-	-	-	-	-	7
Total	354	547	543	486	557	872	517	394	314	419	311	264	361	343	314
By region of citizenship															
Internat'l & Interstate Visitor Arrivals															
Asia	15	28	9	12	14	16	21	11	10	36	35	18	17	9	28
Australia	10	8	12	6	23	6	14	13	5	9	12	7	5	9	7
Canada	4	5	19	3	12	10	7	5	3	9	4	4	1	6	10
Europe	67	136	77	95	129	486	80	55	19	45	63	17	51	85	66
Japan	39	61	222	69	39	76	60	50	34	88	54	74	43	28	37
New Zealand	4	4	-	2	4	5	2	1	5	5	-	2	4	2	1
Pacific Islands	11	23	8	18	30	28	12	25	9	19	11	6	22	10	10
Philippines	26	38	35	17	19	18	27	25	30	23	29	27	15	23	21
USA	176	244	159	259	284	218	294	206	197	181	100	108	188	163	125
Other	2	-	2	5	3	9	-	3	2	4	3	1	15	8	9
Total	354	547	543	486	557	872	517	394	314	419	311	264	361	343	314
Tourism & Visitors only															
Asia	12	17	4	9	8	7	14	3	2	34	28	10	12	6	14
Australia	8	5	10	5	20	5	9	5	2	7	6	4	2	7	4
Canada	4	4	18	3	12	9	7	4	3	8	4	4	-	5	8
Europe	61	134	76	90	124	484	75	51	17	44	58	17	49	84	64
Japan	31	49	217	57	37	71	46	48	29	69	47	65	40	22	32
New Zealand	2	2	-	2	2	5	1	-	-	4	-	2	1	1	1
Pacific Islands	7	14	7	10	26	19	6	19	3	11	5	2	11	4	8
Philippines	5	9	17	5	4	6	5	9	7	7	2	6	3	4	6
USA	121	183	126	184	246	178	234	175	146	129	60	71	115	124	92
Other	1	-	2	5	3	9	-	3	1	3	3	-	15	8	9
Total	252	417	477	370	482	793	397	317	210	316	213	181	248	265	238
Total less Tourism & Visitors															
Asia	3	11	5	3	6	9	7	8	8	2	7	8	5	3	14
Australia	2	3	2	1	3	1	5	8	3	2	6	3	3	2	3
Canada	-	1	1	-	-	1	-	1	-	1	-	-	1	1	2
Europe	6	2	1	5	5	2	5	4	2	1	5	-	2	1	2
Japan	8	12	5	12	2	5	14	2	5	19	7	9	3	6	5
New Zealand	2	2	-	-	2	-	1	1	5	1	-	-	3	1	-
Pacific Islands	4	9	1	8	4	9	6	6	6	8	6	4	11	6	2
Philippines	21	29	18	12	15	12	22	16	23	16	27	21	12	19	15
USA	55	61	33	75	38	40	60	31	51	52	40	37	73	39	33
Other	1	-	-	-	-	-	-	-	1	1	-	1	-	-	-
Total	102	130	66	116	75	79	120	77	104	103	98	83	113	78	76

Source: Division of Immigration and Labor, FSM Dept. of Justice.

Note: ¹Visitor Arrivals by State include both int'l and interstate arrivals; ²A tourist ship arrived in Yap in March 2006.

Annual International and Interstate Visitor Arrivals
(1997 to 2006)

Chart 2. Annual International Visitor Arrivals by Purpose of Visit, FSM: 1997-2006

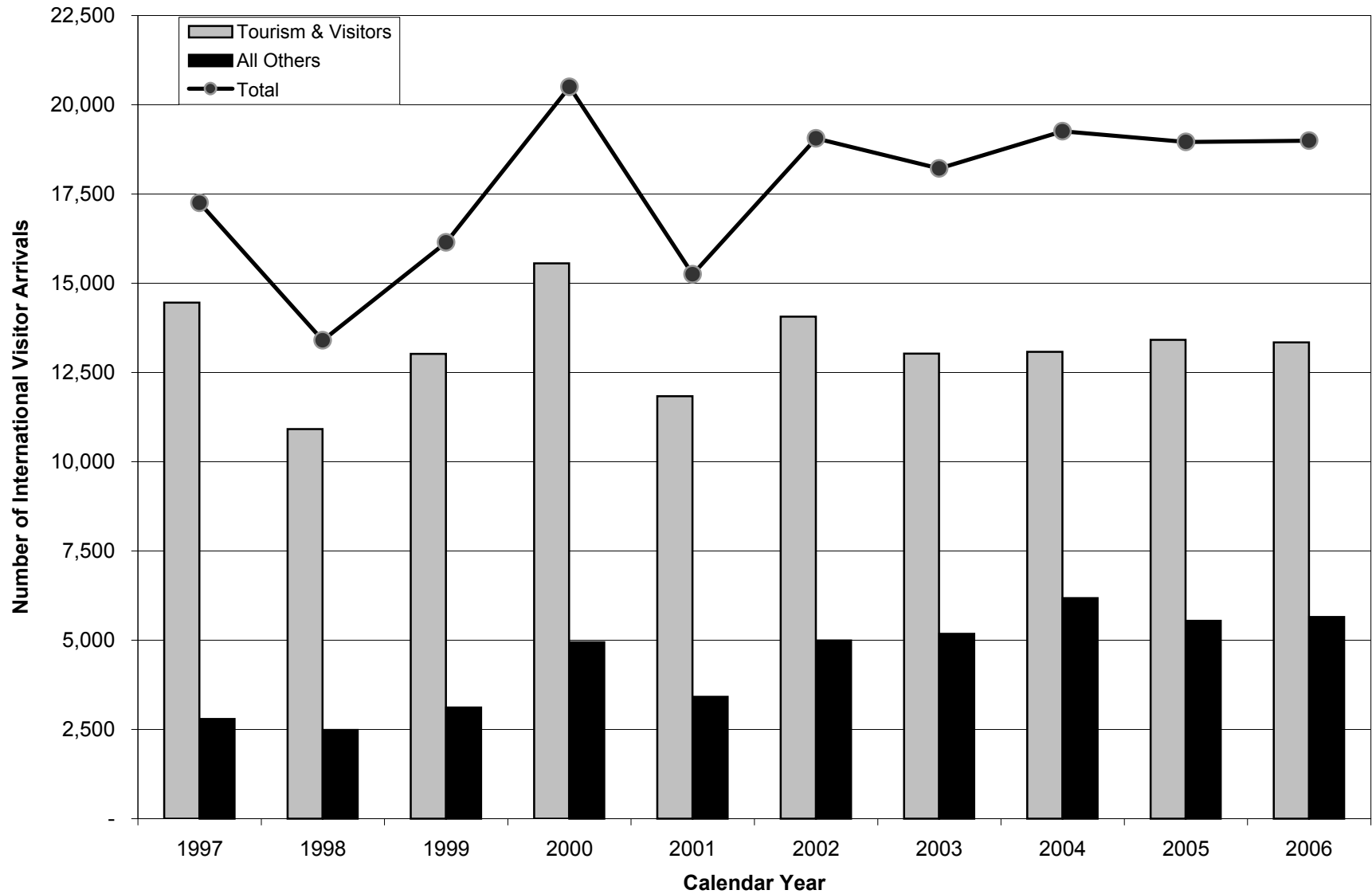


Table 6: Annual International Visitor¹ Arrivals to FSM,
Calendar Year: 1997 to 2006

Purpose and Citizenship	1997	1998	1999	2000	2001	2002	2003	2004	2005	2006
By purpose										
Tourism & Visitors	14,456	10,917	13,023	15,560	11,839	14,061	13,030	13,080	13,415	13,345
Business & Employment	2,274	1,809	2,434	3,128	2,704	3,686	3,805	4,350	4,328	4,529
Volunteer, Religious, etc.	188	274	299	391	370	490	508	505	559	626
Seamen & crew	331	400	384	1,422	340	819	868	1,325	656	493
Other ²	-	-	-	-	-	-	-	-	-	143
Total	17,249	13,400	16,140	20,501	15,253	19,056	18,211	19,260	18,958	19,136
By region of citizenship										
Total International Visitor Arrivals										
Asia	1,463	934	1,237	1,750	1,281	1,711	1,801	2,184	1,743	1,525
Australia	477	428	584	817	504	572	652	1,004	1,064	1,077
Canada	223	155	192	212	171	222	214	212	245	203
Europe	1,047	1,028	1,381	1,465	1,205	1,483	1,568	1,408	2,019	2,398
Japan	4,108	3,358	3,309	4,871	3,118	4,058	3,903	3,822	3,354	3,071
New Zealand	121	124	146	101	94	169	151	239	162	183
Pacific Islands	1,752	907	945	1,208	961	1,438	1,351	1,392	1,184	1,158
Philippines	832	732	988	1,144	932	1,096	1,026	1,341	1,388	1,347
USA	7,117	5,657	7,257	8,779	6,903	8,217	7,457	7,532	7,710	8,053
Other	109	77	101	154	84	90	88	126	89	121
Total	17,249	13,400	16,140	20,501	15,253	19,056	18,211	19,260	18,958	19,136
Tourism & Visitors Only										
Asia	942	558	652	1,004	622	707	759	890	865	799
Australia	402	355	475	632	361	351	452	657	772	791
Canada	196	147	160	181	138	175	156	144	168	146
Europe	966	940	1,261	1,326	1,099	1,309	1,403	1,171	1,815	2,193
Japan	3,886	3,084	3,078	4,566	2,873	3,650	3,453	3,336	2,874	2,675
New Zealand	103	108	124	71	64	111	90	100	81	97
Pacific Islands	1,619	716	838	899	716	1,166	958	869	807	597
Philippines	290	285	348	415	282	258	253	281	276	252
USA	5,959	4,659	6,000	6,336	5,620	6,264	5,446	5,545	5,685	5,705
Other	93	65	87	130	64	70	60	87	72	90
Total	14,456	10,917	13,023	15,560	11,839	14,061	13,030	13,080	13,415	13,345
Total less Tourism & Visitors										
Asia	521	376	585	746	659	1,004	1,042	1,294	878	726
Australia	75	73	109	185	143	221	200	347	292	286
Canada	27	8	32	31	33	47	58	68	77	57
Europe	81	88	120	139	106	174	165	237	204	205
Japan	222	274	231	305	245	408	450	486	480	396
New Zealand	18	16	22	30	30	58	61	139	81	86
Pacific Islands	133	191	107	309	245	272	393	523	377	561
Philippines	542	447	640	729	650	838	773	1,060		
USA	1,158	998	1,257	2,443	1,283	1,953	2,011	1,987	2,025	2,348
Other	16	12	14	24	20	20	28	39	17	31
Total	2,793	2,483	3,117	4,941	3,414	4,995	5,181	6,180	4,431	4,696

Source: Division of Immigration and Labor, FSM Dept. of Justice.

Note: ¹ Visitor Arrivals exclude FSM citizens; ² Include other and undefined purposes in 2006 only.

Chart 3. International & Interstate Visitor Arrivals by Purpose of Visit and Year, Kosrae: 1997-2006

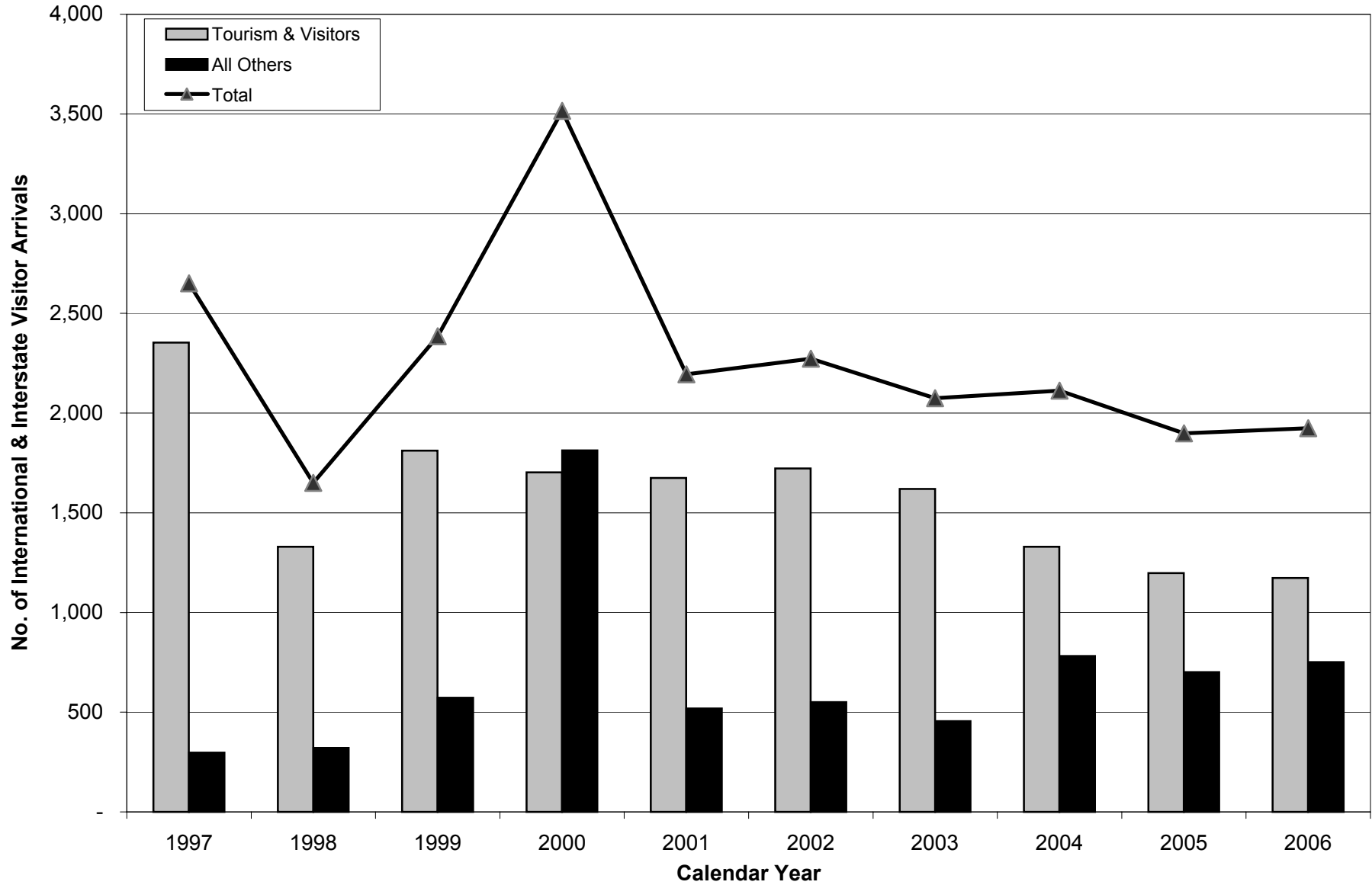


Table 7: Annual International and Interstate Visitor Arrivals to Kosrae,
Calendar Year: 1997 to 2006

Purpose and Citizenship	1997	1998	1999	2000	2001	2002	2003	2004	2005	2006
By purpose										
Tourism & Visitors	2,354	1,330	1,812	1,703	1,675	1,722	1,620	1,330	1,198	1,173
Business & Employment	233	232	471	598	400	419	365	676	621	644
Volunteer, Religious, etc.	37	46	61	67	71	108	76	71	62	93
Seamen & crew	27	42	41	1,148	48	24	14	35	18	14
Other										24
Total	2,651	1,650	2,385	3,516	2,194	2,273	2,075	2,112	1,899	1,948
By region of citizenship										
Internat'l & Interstate Visitor Arrivals										
Asia	80	91	157	86	107	77	96	103	91	54
Australia	62	55	93	71	114	90	68	83	75	92
Canada	24	14	27	36	29	22	24	23	20	22
Europe	100	72	105	128	112	141	87	115	94	348
Japan	249	252	333	221	171	239	211	323	252	191
New Zealand	17	23	18	16	19	19	24	23	15	22
Pacific Islands	897	222	391	487	324	359	472	282	313	161
Philippines	147	105	162	156	159	157	141	160	139	138
USA	1,065	811	1,092	2,289	1,144	1,159	948	983	894	913
Other	10	5	7	26	15	10	4	17	6	7
Total	2,651	1,650	2,385	3,516	2,194	2,273	2,075	2,112	1,899	1,948
Tourism & Visitors Only										
Asia	61	54	72	33	50	31	39	25	38	14
Australia	56	43	80	48	77	57	55	50	48	51
Canada	19	11	23	30	24	20	24	14	11	10
Europe	95	68	82	98	99	128	81	91	61	323
Japan	197	224	255	155	122	167	145	267	193	141
New Zealand	16	22	14	11	17	17	18	11	3	11
Pacific Islands	891	215	373	301	281	316	443	224	256	93
Philippines	65	38	45	37	44	34	27	26	18	16
USA	947	650	861	971	947	943	785	606	567	511
Other	7	5	7	19	14	9	3	16	3	3
Total	2,354	1,330	1,812	1,703	1,675	1,722	1,620	1,330	1,198	1,173
Total less Tourism & Visitors										
Asia	19	37	85	53	57	46	57	78	53	40
Australia	6	12	13	23	37	33	13	33	27	41
Canada	5	3	4	6	5	2	-	9	9	12
Europe	5	4	23	30	13	13	6	24	33	25
Japan	52	28	78	66	49	72	66	56	59	50
New Zealand	1	1	4	5	2	2	6	12	12	11
Pacific Islands	6	7	18	186	43	43	29	58	57	68
Philippines	82	67	117	119	115	123	114	134	121	122
USA	118	161	231	1,318	197	216	163	377	327	402
Other	3	-	-	7	1	1	1	1	3	4
Total	297	320	573	1,813	519	551	455	782	701	775

Source: Division of Immigration and Labor, FSM Dept. of Justice.

Note: Visitor Arrivals exclude FSM citizens.

Chart 4. International & Interstate Visitor Arrivals by Purpose of Visit and Year, Pohnpei: 1997-2006

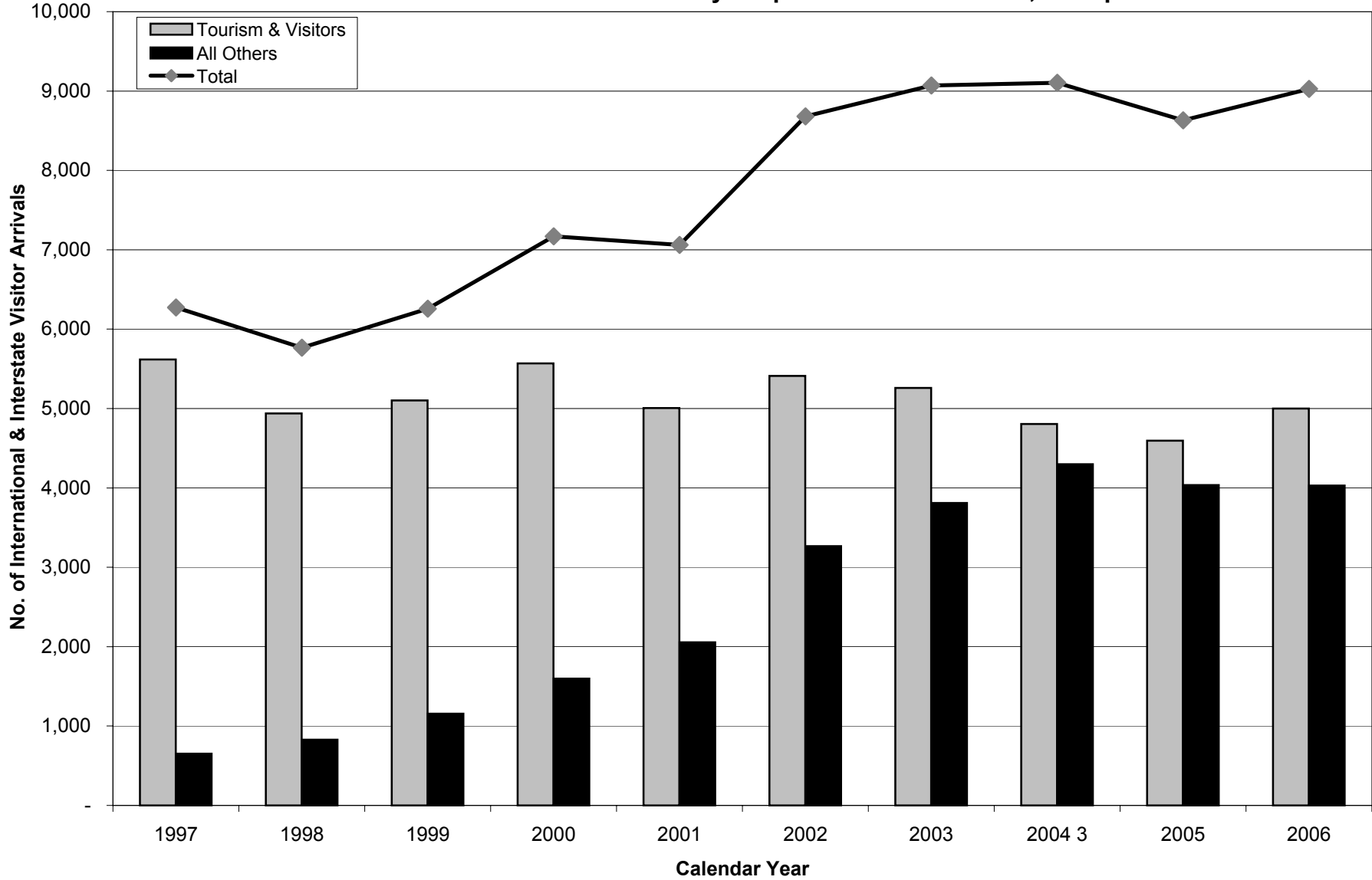


Table 8: Annual International and Interstate Visitor ¹ Arrivals to Pohnpei,
Calendar Year: 1997 to 2006

Purpose and Citizenship	1997	1998	1999	2000	2001	2002	2003	2004 ³	2005	2006
By purpose										
Tourism & Visitors	5,619	4,939	5,103	5,570	5,007	5,412	5,261	<i>4,804</i>	4,595	4,999
Business & Employment	434	383	819	1,257	1,547	2,274	2,836	<i>2,810</i>	3,072	3,118
Volunteer, Religious, etc.	47	122	110	166	211	283	314	<i>267</i>	307	321
Seamen & crew	172	323	227	175	296	710	659	<i>1,223</i>	657	494
Other ²			-	-	-	-	-	-	-	96
Total	6,272	5,767	6,259	7,168	7,061	8,679	9,070	9,104	8,631	9,028
By region of citizenship										
International & Interstate Visitor Arrivals										
Asia	383	491	617	761	708	1,073	1,107	1,511	1,162	1,047
Australia	322	346	398	530	309	348	355	504	521	556
Canada	42	48	69	83	53	63	90	95	89	80
Europe	302	294	311	299	319	302	564	356	340	715
Japan	2,156	1,707	1,473	1,637	1,780	1,783	2,313	1,628	1,667	1,294
New Zealand	79	90	73	55	58	109	98	188	103	127
Pacific Islands	427	440	372	506	389	831	673	795	532	700
Philippines	388	350	496	598	563	625	626	839	883	896
USA	2,119	1,970	2,424	2,651	2,841	3,501	3,191	3,124	3,300	3,560
Other	54	31	26	48	41	44	53	64	34	53
Total	6,272	5,767	6,259	7,168	7,061	8,679	9,070	9,104	8,631	9,028
Tourism & Visitors Only										
Asia	296	349	366	532	364	344	338	508	388	503
Australia	293	313	322	384	199	177	190	200	254	309
Canada	38	46	57	64	36	40	48	37	28	33
Europe	276	253	260	250	253	204	458	207	195	575
Japan	2,059	1,557	1,358	1,464	1,572	1,459	1,936	1,211	1,286	998
New Zealand	73	86	67	40	36	64	36	53	30	47
Pacific Islands	395	338	337	461	248	657	352	384	262	290
Philippines	150	180	211	225	169	126	128	181	214	205
USA	1,993	1,787	2,102	2,110	2,105	2,319	1,744	1,992	1,918	2,020
Other	46	30	23	40	25	22	31	31	20	19
Total	5,619	4,939	5,103	5,570	5,007	5,412	5,261	4,804	4,595	4,999
Total less Tourism & Visitors										
Asia	87	142	251	229	344	729	769	1,003	774	544
Australia	29	33	76	146	110	171	165	304	267	247
Canada	4	2	12	19	17	23	42	58	61	47
Europe	26	41	51	49	66	98	106	149	145	140
Japan	97	150	115	173	208	324	377	417	381	296
New Zealand	6	4	6	15	22	45	62	135	73	80
Pacific Islands	32	102	35	45	141	174	321	411	270	410
Philippines	238	170	285	373	394	499	498	658	669	691
USA	126	183	322	541	736	1,182	1,447	1,132	1,382	1,540
Other	8	1	3	8	16	22	22	33	14	34
Total	653	828	1,156	1,598	2,054	3,267	3,809	4,300	4,036	4,029

Source: Division of Immigration and Labor, FSM Dept. of Justice.

Note: ¹Visitor Arrivals exclude FSM citizens;

²Include other undefined purposes; ³(2004) Italicized figures denote corrected/adjusted figures.

Chart 5. International & Interstate Visitor Arrivals by Purpose of Visit and Year, Chuuk: 1997-2006

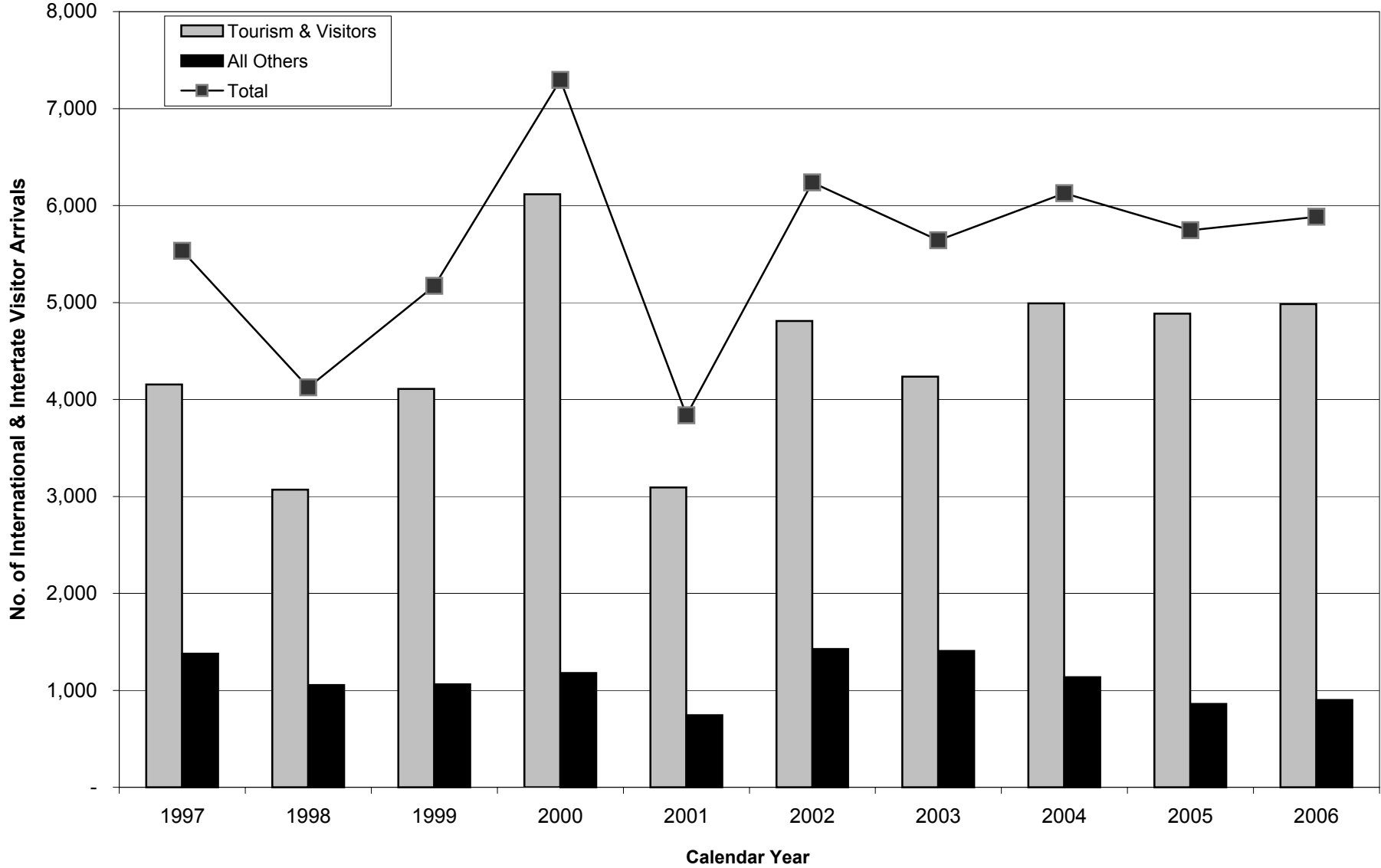


Table 9: Annual International and Interstate Visitor¹ Arrivals to Chuuk,
Calendar Year: 1997 to 2006

Purpose and Citizenship	1997	1998	1999	2000	2001	2002	2003	2004	2005	2006
By purpose										
Tourism & Visitors	4,154	3,070	4,109	6,116	3,092	4,810	4,234	4,990	4,884	4,984
Business & Employment	1,170	871	778	849	566	1,140	969	758	640	739
Volunteer, Religious, etc.	111	136	170	208	168	230	281	228	178	154
Seamen & crew	96	48	113	121	10	57	157	150	42	6
Other ²	-	-	-	-	-	-	-	-	-	23
Total	5,531	4,125	5,170	7,294	3,836	6,237	5,641	6,126	5,744	5,906
By region of citizenship										
International & Interstate Visitor Arrivals										
Asia	726	346	403	575	226	306	431	466	373	342
Australia	105	94	157	262	130	184	233	396	473	466
Canada	78	38	58	64	66	101	88	54	87	65
Europe	444	347	538	508	316	475	491	436	562	536
Japan	1,123	945	988	2,479	832	1,737	1,101	1,643	998	1,208
New Zealand	16	22	41	21	13	31	59	63	62	43
Pacific Islands	161	127	102	128	112	176	161	190	207	212
Philippines	290	333	395	458	297	385	408	455	482	463
USA	2,547	1,846	2,451	2,749	1,828	2,821	2,651	2,406	2,474	2,555
Other	41	27	37	50	16	21	18	17	26	16
Total	5,531	4,125	5,170	7,294	3,836	6,237	5,641	6,126	5,744	5,906
Tourism & Visitors only										
Asia	518	222	269	421	137	157	233	267	276	183
Australia	79	63	125	223	114	152	199	374	448	441
Canada	64	37	45	57	53	82	63	40	76	58
Europe	400	320	497	465	291	416	447	393	523	492
Japan	1,017	873	889	2,379	766	1,645	976	1,574	928	1,137
New Zealand	10	16	33	12	9	24	43	38	46	35
Pacific Islands	85	69	69	79	87	131	113	137	174	158
Philippines	71	85	139	192	98	78	77	73	92	76
USA	1,877	1,369	2,017	2,250	1,524	2,108	2,068	2,081	2,296	2,391
Other	33	16	26	38	13	17	15	13	25	13
Total	4,154	3,070	4,109	6,116	3,092	4,810	4,234	4,990	4,884	4,984
Total less Tourism & Visitors										
Asia	208	124	134	154	89	149	198	199	97	159
Australia	26	31	32	39	16	32	34	22	25	25
Canada	14	1	13	7	13	19	25	14	11	7
Europe	44	27	41	43	25	59	44	43	39	44
Japan	106	72	99	100	66	92	125	69	70	71
New Zealand	6	6	8	9	4	7	16	25	16	8
Pacific Islands	76	58	33	49	25	45	48	53	33	54
Philippines	219	248	256	266	199	307	331	382	390	387
USA	670	477	434	499	304	713	583	325	178	164
Other	8	11	11	12	3	4	3	4	1	3
Total	1,377	1,055	1,061	1,178	744	1,427	1,407	1,136	860	922

Source: Division of Immigration and Labor, FSM Dept. of Justice.

Note: ¹Visitor Arrivals exclude FSM citizens; ² Include other and undefined purposes for 2006 only

Chart 6. International & Interstate Visitor Arrivals by Purpose of Visit and Year, Yap: 1997-2006

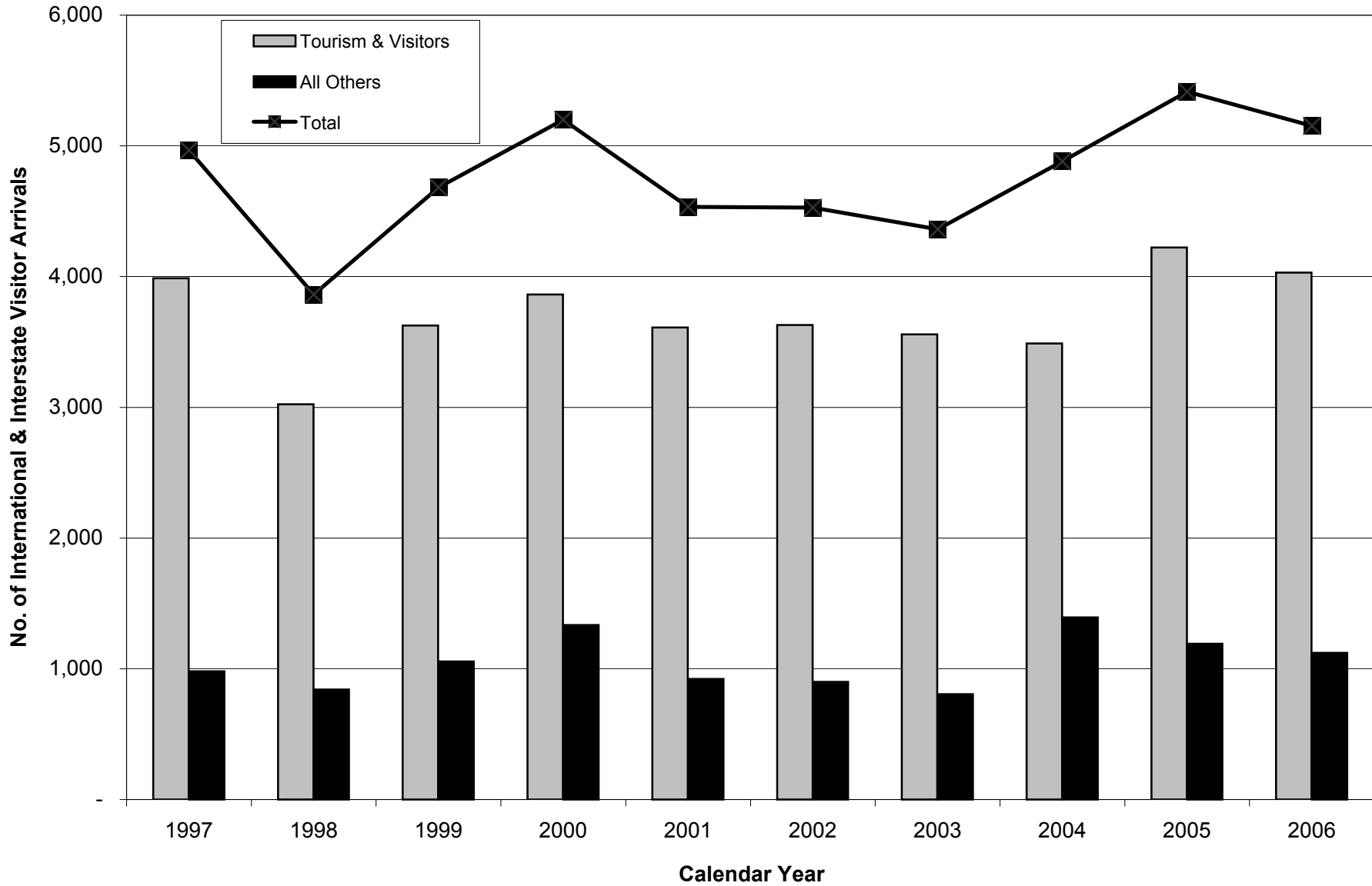


Table 10: Annual International and Interstate Visitor Arrivals to Yap,
Calendar Year: 1997 to 2006

Purpose and Citizenship	1997	1998	1999	2000	2001	2002	2003	2004	2005	2006
By purpose										
Tourism & Visitors	3,987	3,023	3,626	3,864	3,611	3,629	3,558	3,488	4,223	4,030
Business & Employment	895	804	1,003	1,267	886	781	668	1,239	1,046	964
Volunteer, Religious, etc.	40	37	35	53	30	58	40	111	132	146
Seamen & crew	45	-	19	15	6	60	97	43	14	12
Total	4,967	3,864	4,683	5,199	4,533	4,528	4,363	4,881	5,415	5,152
By region of citizenship										
International & Interstate Visitor Arrivals										
Asia	417	211	304	536	414	432	456	443	329	227
Australia	103	50	73	76	83	81	134	160	152	116
Canada	101	74	72	83	63	73	68	88	80	74
Europe	402	442	589	689	628	725	656	650	1,176	1,191
Japan	946	775	845	891	658	720	656	567	752	652
New Zealand	30	23	41	19	22	36	23	25	33	33
Pacific Islands	409	204	218	219	186	174	151	232	215	200
Philippines	179	149	196	227	141	186	188	361	364	274
USA	2,350	1,910	2,301	2,397	2,304	2,068	2,013	2,313	2,284	2,323
Other	30	26	44	62	34	33	18	42	30	62
Total	4,967	3,864	4,683	5,199	4,533	4,528	4,363	4,881	5,415	5,152
Tourism & Visitors only										
Asia	170	68	99	125	149	244	266	211	239	147
Australia	73	32	43	46	61	42	99	114	110	76
Canada	93	71	63	73	56	60	63	75	64	67
Europe	378	407	553	646	604	694	624	597	1,135	1,157
Japan	877	690	791	802	606	612	599	481	654	563
New Zealand	21	14	33	13	12	25	15	21	19	19
Pacific Islands	373	169	176	162	135	130	113	178	155	124
Philippines	81	58	51	59	60	80	98	121	112	64
USA	1,899	1,494	1,779	1,878	1,901	1,710	1,666	1,655	1,709	1,754
Other	22	20	38	60	27	32	15	35	26	59
Total	3,987	3,023	3,626	3,864	3,611	3,629	3,558	3,488	4,223	4,030
Total less Tourism & Visitors										
Asia	247	143	205	411	265	188	190	232	90	80
Australia	30	18	30	30	22	39	35	46	42	40
Canada	8	3	9	10	7	13	5	13	16	7
Europe	24	35	36	43	24	31	32	53	41	34
Japan	69	85	54	89	52	108	57	86	98	89
New Zealand	9	9	8	6	10	11	8	4	14	14
Pacific Islands	36	35	42	57	51	44	38	54	60	76
Philippines	98	91	145	168	81	106	90	240	252	210
USA	451	416	522	519	403	358	347	658	575	569
Other	8	6	6	2	7	1	3	7	4	3
Total	980	841	1,057	1,335	922	899	805	1,393	1,192	1,122

Source: Division of Immigration and Labor, FSM Dept. of Justice.
Note: Visitor Arrivals exclude FSM citizens.

Appendix A: Purpose of Visit Classification

The '**Purpose of Visit**' statistical classification is based on a categorization made by customs offices for immigration purposes, based on information declared by arriving visitors. The visitors are allocated from the immigration categories into the purpose of visit classification as follows:

Tourism and visitors: This includes tourists arriving via aircraft and vessels, plus visitors.

Business and employment: This includes employment, sales persons, foreign investors, plus dependents of these categories.

Volunteer, religious etc: This includes missionary, volunteers, research, foreign students, spouses of FSM citizens, plus dependents of these categories.

Seamen and crew: This category includes Crew Members who disembark from Aircraft or Vessels passing through the FSM, plus Seamen who arrive to Embark on a vessel. Crew Members who do not disembark are excluded.

Other: This category includes Visitors whose 'purpose of visit' are unclear as well as the undefined cases in Pohnpei and Chuuk for year 2006 only.