

## CONTENTS

Part 1	VISITOR STATISTICS – SECOND QUARTER 2003.....	2
1.1.0	Introduction .....	2
1.1.1	Concept .....	2
1.1.2	Methodology.....	3
1.1.3	Coverage.....	3
1.1.4	Timeliness.....	3
1.1.5	Data management .....	3
Part 2	VISITORS STATISTICS – SECOND QUARTER 2003.....	4
2.1.1	International arrivals .....	4
2.1.2	Growth from previous year .....	4
2.1.3	Sex ratio .....	4
2.2.0	Visitors Arrivals .....	5
2.2.2	Monthly arrivals .....	5
2.2.3	Country of residence .....	6
2.2.4	Tourist and average length of stay .....	6
2.2.5	Purpose of visit .....	7
2.2.6	Visitors by broad age category .....	7
2.2.8	Visitors by Carrier .....	8
Part 3	Facts and Figures .....	9
3.1.0	Tables.....	9

## Part 1 VISITOR STATISTICS – SECOND QUARTER 2003

### 1.1.0 Introduction

This bulletin presents international arrivals into the country during the second quarter of 2003. The report is a quarterly bulletin that was published every quarter. The statistics office apologizes for not publishing fourth quarter of 2001, and all the quarters of 2002. This difficulty is beyond our reach because it involves problems associate with the secondary data.

The statistics office acknowledges the Immigration department for providing the information batches of passengers passing through various international ports in the Solomon Islands. Complete coverage is confirmed by the questionnaires' nature and it is compulsory that all passengers must complete for the reason that it would facilitate immigration check-in formalities. Without the support of the Immigration department the statistics office would not be able to publish this bulletin.

The bulletin comprises of eight contingency tables, ideally to maintain comparison. Information not included but believed to be part of this bulletin would be supplied on request. The statistics office regret to announce that information concerning the monetary value of the industry is not possible. With best of conduct and abiding commitment to our users, it is noteworthy to mention that the data disseminated on this bulletin reflects the data captured from the data source. Lastly the statistics office believed that the information disseminated in this bulletin would be useful to users in the country and overseas.

The bulletin is divided into three (3) parts, part 1 comprises the introduction, concepts, methodology, and data management, part 2 consists of reporting and analysis of data; and part 3 presents the figures.

### 1.1.1 Concept

Persons entering Solomon Islands self classify themselves into three (3) categories namely returning resident, intending resident, and visitor. The concepts and definitions of the various categories are as follows:

#### (i) Returning resident.

- Solomon Islanders and non-Solomon Islanders who have left the country and were returning to continue their residence.
- Non Solomon Islanders includes resident permit holders and Diplomatic officials, and their immediate family members. This may also includes legal or official arrangements that fall out side of the above.

#### (ii) Intending resident.

- Non-Solomon Islander who wish to take up residence in Solomon Islands.

#### (iii) Visitor.

- Any traveler who is not a Solomon Islander and who purposely spend less time – at most a period of 120 days<sup>1</sup>, in the country and with the intension and purpose of visiting.
- Tourist.
  - Visitors who further classify themselves stating their visit are purposely for '*holiday and vocation*'. This excludes, tourist arrivals by cruise ships.
  - Wife accompanying husband on business purpose is a private tourist unless also working.

#### (iv) Sex Ratio.

- The sex ratio is the proportion of males to females, expressed as the number of males for every 100 females.

---

<sup>1</sup> Solomon Islands 1993 Statistical Yearbook.

### 1.1.2 Methodology

Data is collected by a self-complete questionnaire called 'Solomon Islands Immigration Passenger Declaration' that is compulsory for all individual passenger to complete for the reason that it would facilitate immigration check-in formalities. The completed forms are collected at the Immigration check-in desk and registered, before the batches are pass on to the Statistics office.

### 1.1.3 Coverage

The coverage is all passengers passing through the various international ports of entry into Solomon Islands. Under the Solomon Islands obligatory statute and the Immigration Act, it was compulsory that all passengers must complete the form. This would facilitate immigration check-in and formalities to enter into Solomon Islands.

### 1.1.4 Timeliness

The bulletin timeliness is lagging by one year. The lagging of this bulletin resulted from the previous years problems and measures has been identified to improve on timeliness.

### 1.1.5 Data management

The electronic data structures and form designs to ease data input was prepared by the statistics office. The management of the database (data set) has to go through various stages before tabulation. First, the data input was done in paradox3, and then the data set is translated into a database file format where the data management and recoding of data is done. Data management involves checking the data for consistency, accuracy and completeness. Editing of data when and wherever necessary can be done on the spot, couple with the addition and recoding of key variables for tabulation. Second, the selected variables for cross-tabulation were finalize in excel software and is later saved in an ASCII/text file format. Third, a file dictionary is created in CSPro software from the ASCII/text file followed by the development of readable attributes of value label for tabulation process in CSPro. Finally the tables are prepared in excel and the final report was printed in Microsoft Word.

## Part 2 VISITORS STATISTICS – SECOND QUARTER 2003

### 2.1.1 International arrivals

International arrivals into Solomon Islands during the second quarter of 2003 totaled 4,293 persons. By classification 1,835 are visitors, 184 are intending residents, and 2,264 are returning residents. Returning resident is further classified into two categories, Solomon Islanders and non Solomon Islanders, 485 non Solomon Islanders returned during the period. The arrivals sex ratio is 138. Arrivals sex differential indicates the level of participation and involvement associated with their determination to travel to a country such as the Solomon Islands.

### 2.1.2 Growth from previous year

The Second quarter arrivals (4,293), marks an improvement of 52.8 per cent compared to the same quarter two years ago. This change has resulted from combined efforts on the returning resident category by 102.0 per cent, the intending resident (33.8%) and the visitor (18.8%) categories during the period. By examination the male participation contributed more to the change in absolute numbers compared to female.

### 2.1.3 Sex ratio

Table A below presents the arrivals sex ratio by purpose of visit, quarter and year. The quarter's sex ratio of 138 is an improvement from the previous quarter of 242. This indicator, measures the proportion of male to female, expressed as the number of males for every 100 females. The sex ratio of 138 indicates the difference on gender participation and involvement during the quarter.

Table A Arrivals sex ratio by purpose of visit by quarter 1998 to second quarter 2003

		Returning		Intending	Visitor	Total
		Solomon	Non Solomon			
1998	1st	214	125	226	341	260
	2nd	193	131	116	247	208
	3rd	194	109	132	213	189
	4th	157	154	160	163	160
1999	1st	170	175	193	272	223
2000	1st	198	350	248	314	257
	2nd	172	0	327	299	250
	3rd	202	0	0	373	260
	4th	161	0	193	305	211
2001	1st	163	0	242	348	242
	2nd	156	0	202	271	212
	3rd	180	0	408	282	247
2003	1st	174	363	314	329	242
	2nd	76	143	120	259	138

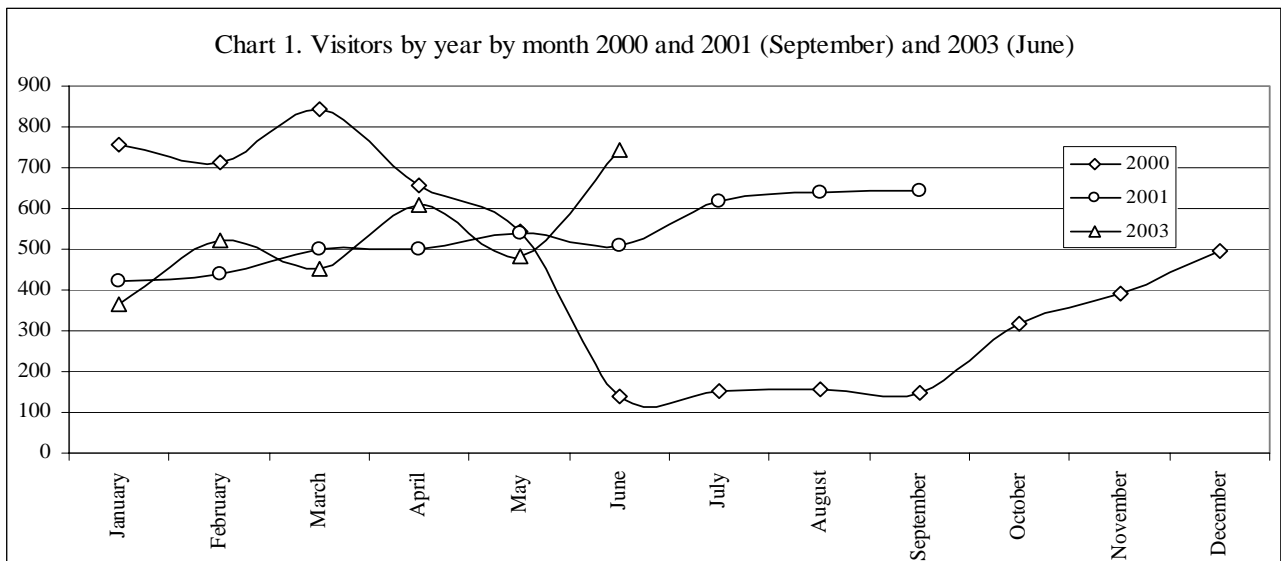
## 2.2.0 Visitors Arrivals

Visitors arrivals during the second quarter of 2003 totaled 1,835 persons. This marked an increase of 37 per cent from the previous quarter (1,339) and 18.8 per cent increase compared to the same period two years ago. By enumeration male comprises of 1,324 and female by 511, that composes a sex ratio of 138. The sex ratio of 138 indicates the magnitude of gender involvement associated with their determination to travel to a country such as the Solomon Islands.

The distribution of the arrivals by the country of markets ranges from 6 to 766 persons, excluding France with zero visitors during the period. The range indicates the magnitude of a country's involvement associated with their geographical location and the charming developments to nest Solomon Islands as a destination. Australia (41.7%) is the major market during the quarter followed by the United States (10.3), Other Asia (9.4%), New Zealand (6.5%), Papua New Guinea (6.4%), and the rest of the countries scale down from 5.9 per cent to less than 1 per cent.

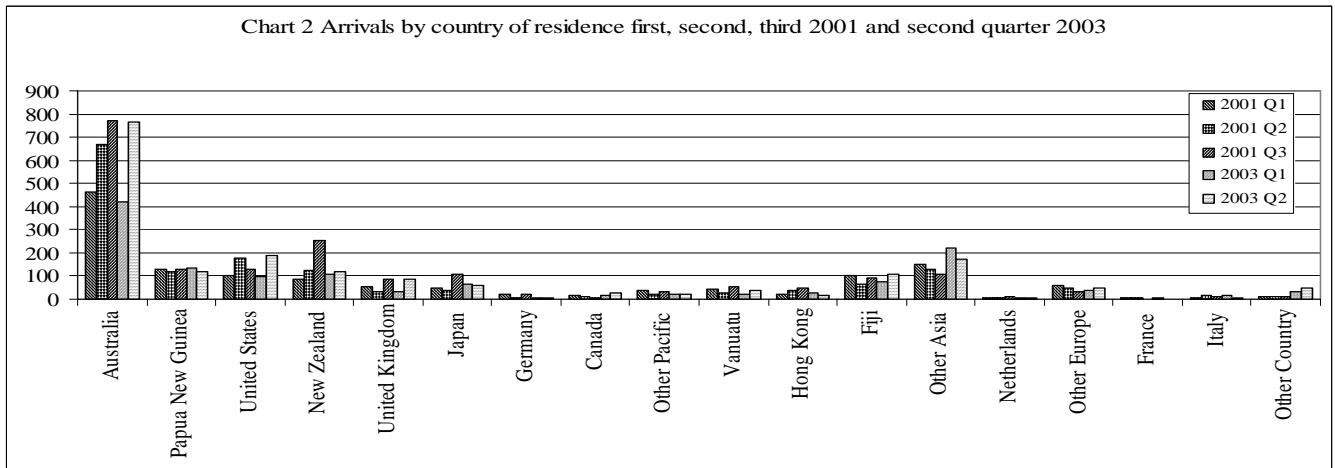
## 2.2.2 Monthly arrivals

Table 3.1.3 presents the distribution of visitors arrivals by year and by month. The popular month of the quarter is June with 743 persons, followed by April (609) and May (483). Monthly progress singled out May (483) as a slow month recorded a fall of 20.7 per cent from April but an increase of 53.8 per cent in June with 743 persons. June the peak month comprises 40.5 per cent of the quarters total arrivals. April and June record an improvement of 22 per cent and 46.3 per cent respectively, whilst May recorded a drop by 10.1 per cent compared to the corresponding month two years ago.



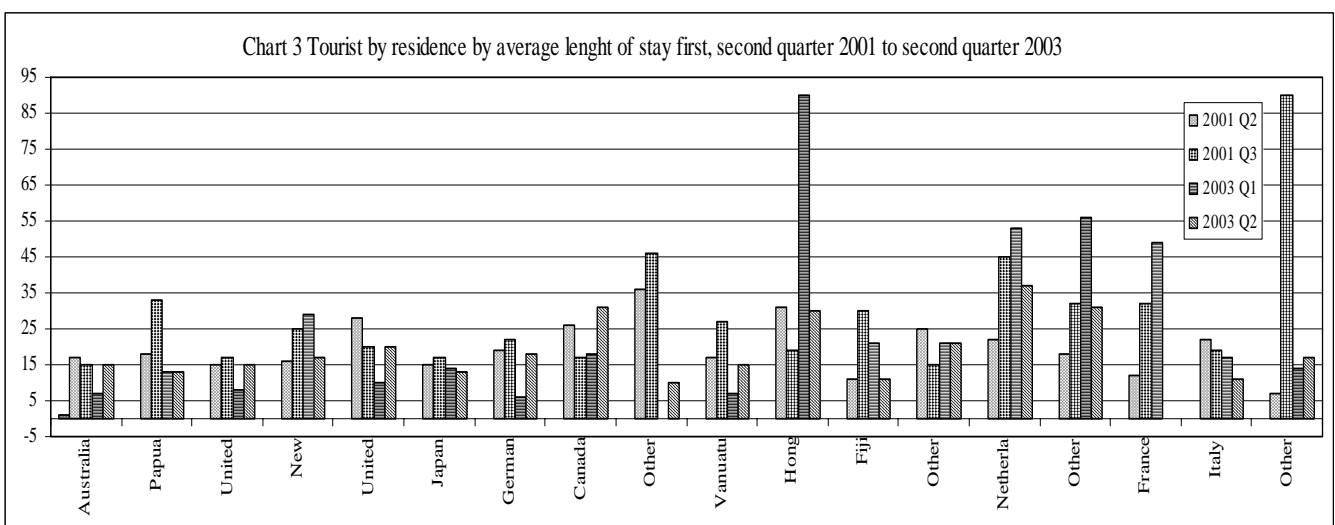
### 2.2.3 Country of residence

The distribution of the arrivals by country of residence emulates the magnitude among the main markets. Australia showed dominance by 41.7 per cent of the total visitors arrivals. Arrivals distribution inconsistency is evident for the rest of the countries unlike Australia who maintain consistency and domination and has been the leading market in the Solomon Islands. Australian dominance is followed by the United States (10.3%), Other Asia (9.4%), New Zealand (6.5%), Papua New Guinea (6.4%), Fiji (5.9%), and the rest of the markets' scale down from 4.6 to less than 1 per cent.



### 2.2.4 Tourist and average length of stay

Tourist arrivals totaled 651 persons during the quarter, marked an improvement of 65.2 per cent compared to the previous quarter and a 2.2 per cent increase compared to the same period two years ago. Certainly Australia maintained the arrivals dominance in the tourist category. Tourists spent on average 18 days in the country. The range of the number of days spent by travelers in the country is 10 to 37 days. By proportion, 21.7 per cent of the tourists spent more days in the country than the quarters average and 78.3 per cent spent less than the quarters' average. The least and the most number of days were spent by tourists from Other Pacific and Netherlands respectively. Refer to Chart 3 and Table 3.1.4 for further analysis:

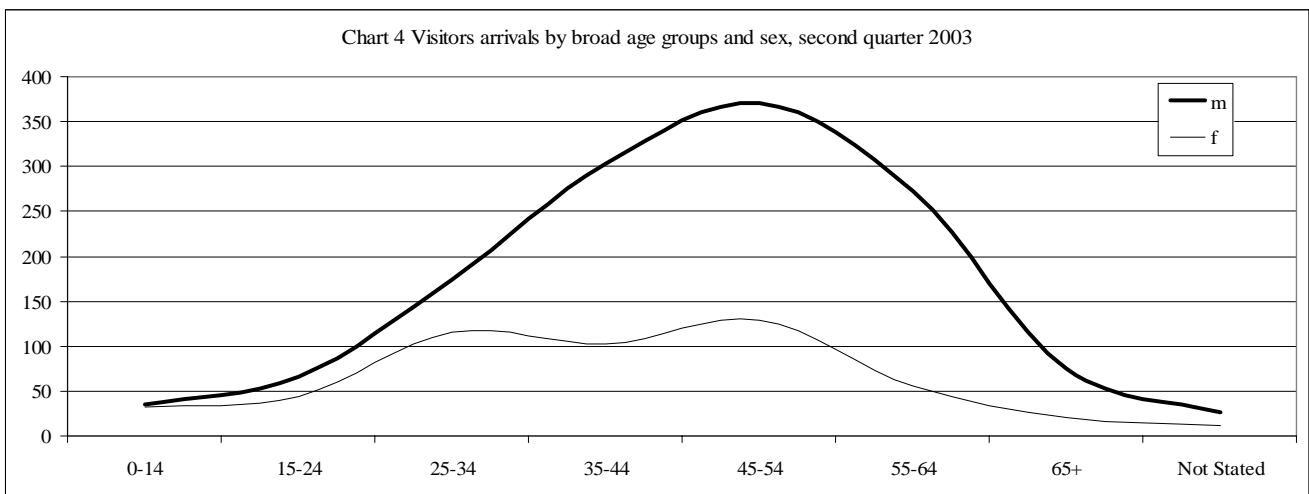


### 2.2.5 Purpose of visit

Business and conference category recorded the largest proportion (40.7%) of visitors during the quarter. This is followed by holiday and vocation (35.5%), visit friends and relatives (13.3%), other (8.3%), and transit and stopover (2.2%). Detach analysis on the purpose and occupation revealed that the professional and technical category dominates the distribution across the purpose of visit category. By proportion 42 per cent of the professional and technical contingents arrived for business and conference, holiday and vocation (34.6%), visit friend and relatives (11.9%), other (9.9%), and transit and stopover (1.8%). On the other hand administration and managerial category (23.6%) was the second most popular occupation arrived for business and conference, while all the other occupations scale down from 8 to less than 1 per cent.

### 2.2.6 Visitors by broad age category

The distribution of arrivals by broad age groups and sex emulates the arrivals disparity by gender. Gender disparity revealed dissimilar mean age groups for male (45-54) and female (35-44). The spread of the arrivals around the mean age groups shows the discrepancy by gender where the magnitude of males to travel in the older age groups compared to the females. This is an indication that deviate the level of involvement associated with age and sex and their travel to prefer the Solomon Islands as a destination. Refer to Chart 4 for further analysis.

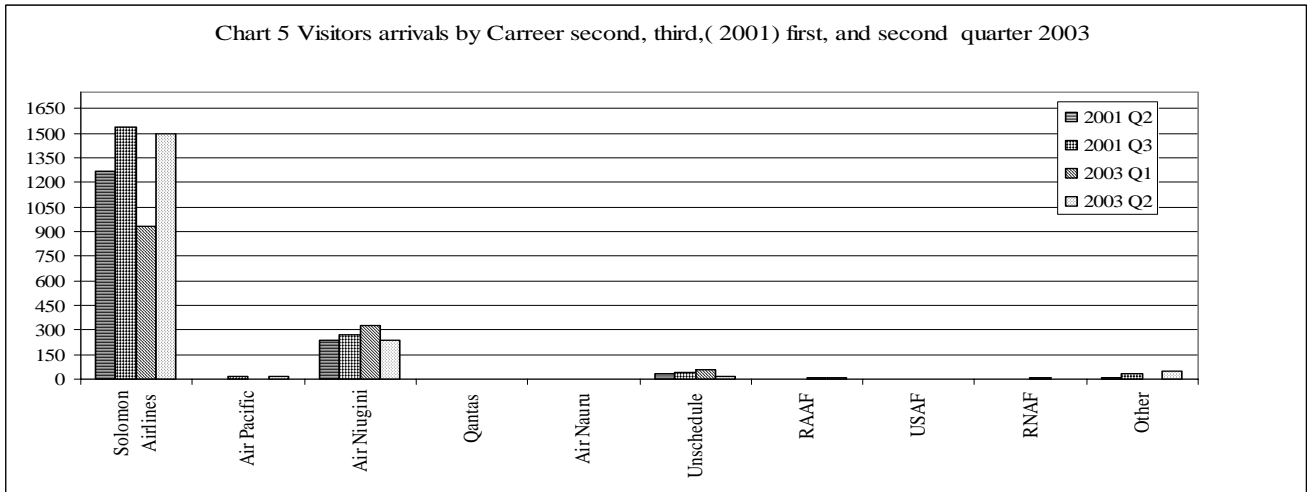


### 2.2.7 Visitors by occupation

The distribution of visitors by country and occupation revealed that Australia dominates all the rest of the countries in absolute numbers on the occupational categories. Professional and technical category comprises of 46.3 per cent is the most popular occupation during the quarter. The category displayed 42 per cent arrived for business and conference purpose, 34.6 per cent for holidays and vocation, 11.7 per cent to visit friends and relatives, 9.9 per cent for other purposes and 1.8 per cent for transit. Visitors by occupation and purpose demonstrated business and conference as the most popular purpose of visit across the occupational category analysis. Variation appears on the distribution of arrivals by the age groups and occupations, and the two most popular age groups were 35 to 44 and 45 to 54.

### 2.2.8 Visitors by Carrier

Solomon Airlines the most popular carrier transported 81.8 per cent of visitors arrivals during the quarter. This is followed by Air Niugini (13.1%), Other (2.8%), and 2.3 per cent is shared among Royal Australia Air Force (RAAF), Air Pacific, and Unscheduled. Air Niugini transported 84.7 per cent of the Papua New Guinea residence whereas the remaining 14.4 per cent of Papua New Guinea residence travel via the Solomon Airlines. Refer to Chart 5 and Table 3.1.8 for further analysis.



## Part 3 Facts and Figures

### 3.1.0 Tables

International arrivals distribution classified at different categories compiled in the report was disclosed in the eight (8) tables below.

**Table 3.1.1 Total arrivals classified as returning, intending residents and visitors, third quarter 1997 to second quarter 2003.**

Year / Quarter	Returning Resident							Intending Resident			Visitor			Total		
	Solomon Islander			Non-Solomon Islander			all	m	f	t	m	f	t	m	f	all
	m	f	t	m	f	t										
1997 3 <sup>rd</sup>	977	533	1,510	306	158	464	1,974	189	73	262	2,715	1,159	3,874	4,187	1,923	6,110
4 <sup>th</sup>	1,501	752	2,253	175	113	288	2,541	305	145	450	2,726	1,082	3,808	4,707	2,092	6,799
1998 1 <sup>st</sup>	910	426	1,336	331	265	596	1,932	449	199	648	2,673	785	3,458	4,363	1,675	6,038
2 <sup>nd</sup>	944	488	1,432	215	164	379	1,811	325	279	604	2,818	1,142	3,960	4,302	2,073	6,375
3 <sup>rd</sup>	984	508	1,492	236	216	452	1,944	396	301	697	2,914	1,368	4,282	4,530	2,393	6,923
4 <sup>th</sup>	1,674	1,067	2,741	339	220	559	3,300	296	185	481	2,540	1,562	4,102	4,849	3,034	7,883
1999 <sup>g</sup> 1 <sup>st</sup>	569	335	904	378	216	594	1,498	303	157	460	1,809	665	2,474	3,059	1,373	4,432
2000 1 <sup>st</sup>	1,049	530	1,579	7	2	9	1,588	243	98	341	1,757	560	2,317	3,056	1,190	4,246
2 <sup>nd</sup>	399	232	631	0	0	0	631	72	22	94	1,004	336	1,340	1,475	590	2,065
3 <sup>rd</sup>	379	188	567	0	0	0	567	1	0	1	362	97	459	742	285	1,027
4 <sup>th</sup>	778	484	1,262	0	0	0	1,262	81	42	123	814	267	1,081	1,673	793	2,466
2001 <sup>h</sup> 1 <sup>st</sup>	673	413	1,086	2	0	2	1,088	92	38	130	1,058	304	1,362	1,825	755	2,580
2 <sup>nd</sup>	683	438	1,121	0	0	0	1,121	97	48	145	1,128	416	1,544	1,908	902	2,810
3 <sup>rd</sup>	577	320	897	0	2	2	899	102	25	127	1,403	497	1,900	2,082	844	2,926
2003 1 <sup>st</sup>	781	448	1,229	58	16	74	1,303	66	21	87	1,027	312	1,339	1,932	797	2,729
2 <sup>nd</sup>	771	1,008	1,779	285	200	485	2,264	106	88	194	1,324	511	1,835	2,486	1,807	4,293
<b>Percentage change</b>																
2 <sup>nd</sup> 98 - 3 <sup>rd</sup> 98	4.2	4.1	4.2	9.8	31.7	19.3	7.3	21.8	7.9	15.4	3.4	19.8	8.1	5.3	15.4	8.6
3 <sup>rd</sup> 97 - 3 <sup>rd</sup> 98	0.7	-4.7	-1.2	-22.9	36.7	-2.6	-1.5	109.5	312.3	166.0	7.3	18.0	10.5	8.2	24.4	13.3
3 <sup>rd</sup> 98 - 4 <sup>th</sup> 98	70.1	110.0	83.7	43.6	1.9	23.7	69.8	-25.3	-38.5	-31.0	-12.8	14.2	-4.2	7.0	26.8	13.9
4 <sup>th</sup> 97 - 4 <sup>th</sup> 98	11.5	41.9	21.7	93.7	94.7	94.1	29.9	-3.0	27.6	6.9	-6.8	44.4	7.7	3.0	45.0	15.9
4 <sup>th</sup> 98 - 1 <sup>st</sup> 99	-66.0	-68.6	-67.0	11.5	-1.8	6.3	-54.6	2.4	-15.1	-4.4	-28.8	-57.4	-39.7	-36.9	-54.7	-43.8
1 <sup>st</sup> 98 - 1 <sup>st</sup> 99	-37.5	-21.4	-32.3	14.2	-18.5	-0.3	-22.5	-32.5	-21.1	-29.0	-32.3	-15.3	-28.5	-29.9	-18.0	-26.6
1 <sup>st</sup> 99 - 1 <sup>st</sup> 2000	84.4	58.2	74.7	-98.1	-99.1	-98.5	6.0	-19.8	-37.6	-25.9	-2.9	-15.8	-6.3	-0.1	-13.3	-4.2
1 <sup>st</sup> 2000 - 2 <sup>nd</sup> 2000	-62.0	-56.2	-60.0	-100.0	-100.0	-100.0	-60.3	-70.4	-77.6	-72.4	-42.9	-40.0	-42.2	-51.7	-50.4	-51.4
4 <sup>th</sup> 98 - 4 <sup>th</sup> 2000	-53.5	-54.6	-54.0	-100.0	-100.0	-100.0	-61.8	-72.6	-77.3	-74.4	-68.0	-82.9	-73.6	-65.5	-73.9	-68.7
2 <sup>nd</sup> 2000 - 3 <sup>rd</sup> 2000	-5.0	-19.0	-10.1	0.0	0.0	0.0	-10.1	-98.6	-100.0	-98.9	-63.9	-71.1	-65.7	-49.7	-51.7	-50.3
3 <sup>rd</sup> 2000 - 4 <sup>th</sup> 2000	105.3	157.4	122.6	0.0	0.0	0.0	122.6	8000.0	0.0	12200.0	124.9	175.3	135.5	125.5	178.2	140.1
4 <sup>th</sup> 2000 - 1 <sup>st</sup> 2001	-13.5	-14.7	-13.9	0.0	0.0	0.0	-13.8	13.6	-9.5	5.7	30.0	13.9	26.0	9.1	-4.8	4.6
1 <sup>st</sup> 2001 - 2 <sup>nd</sup> 2001	1.5	6.1	3.2	-100.0	0.0	-100.0	3.0	5.4	26.3	11.5	6.6	36.8	13.4	4.5	19.5	8.9
2 <sup>nd</sup> 2001 - 3 <sup>rd</sup> 2001	-15.5	-26.9	-20.0	0.0	100.0	100.0	-19.8	5.2	-47.9	-12.4	24.4	19.5	23.1	9.1	-6.4	4.1
1 <sup>st</sup> 2001 - 1 <sup>st</sup> 2003	16.0	8.5	13.2	2800.0	0.0	3600.0	19.8	-28.3	-44.7	-33.1	-2.9	2.6	-1.7	5.9	5.6	5.8
1 <sup>st</sup> 2003 - 2 <sup>nd</sup> 2003	-1.3	125.0	44.8	391.4	1150.0	555.4	73.8	60.6	319.0	123.0	28.9	63.8	37.0	28.7	126.7	57.3
2 <sup>nd</sup> 2001 - 2 <sup>nd</sup> 2003	12.9	130.1	58.7	0.0	0.0	0.0	102.0	9.3	83.3	33.8	17.4	22.8	18.8	30.3	100.3	52.8

Note: "g" - Q2, Q3, Q4; "h" 2001 Q4 and 2002 no data from data source

Table 3.1.2 Visitor arrivals by country of residence by year and quarter, first quarter 1997 to first quarter 2003

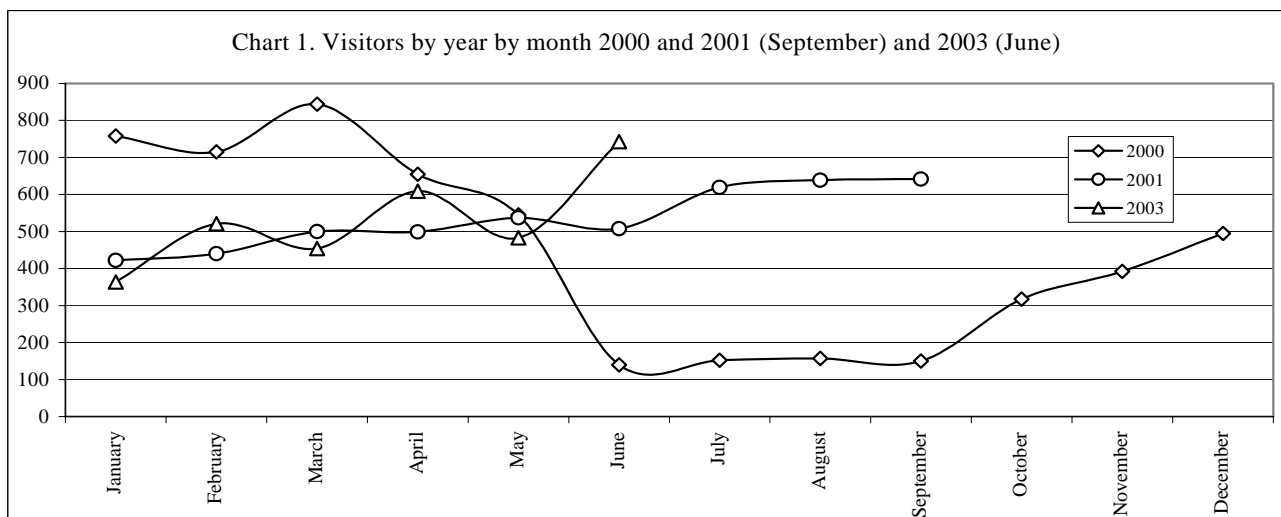
Country of Usual Residence	1997			1998					1999 <sup>@</sup>	2000					2001 <sup>£</sup>			2003	
	Q3	Q4	total	Q1	Q2	Q3	Q4	total	Q1	Q1	Q2	Q3	Q4	total	Q1	Q2	Q3	Q1	Q2
Australia	1,458	1,454	5,421	1,294	1,625	1,627	1,426	5,972	906	851	489	189	420	1,949	465	666	771	423	766
Papua New Guinea	317	476	1,275	416	422	352	652	1,842	309	274	132	21	115	542	132	116	128	137	118
United States	333	355	1,123	95	322	334	302	1,053	214	184	136	33	80	433	100	179	131	95	189
New Zealand	559	298	1,591	274	360	376	179	1,189	176	173	110	49	82	414	86	123	251	107	120
United Kingdom	118	144	485	142	122	159	161	584	89	66	44	9	47	166	54	35	85	31	84
Japan	214	186	729	268	150	188	166	772	148	97	45	9	31	182	51	36	107	66	61
Germany	26	34	107	35	23	31	23	112	27	21	15	2	11	49	19	8	20	3	8
Canada	58	37	149	38	26	17	15	96	16	14	15	2	11	42	14	12	8	15	26
Other Pacific	97	110	373	36	58	89	92	275	64	46	34	2	13	95	36	23	35	22	20
Vanuatu	137	163	523	103	151	393	524	1,171	71	171	72	8	29	280	44	27	55	23	37
Hong Kong	19	17	95	7	30	10	21	68	12	23	14	11	17	65	22	38	50	25	16
Fiji	129	124	499	171	186	176	157	690	114	108	74	14	35	231	103	64	90	78	108
Other Asia	275	284	983	438	368	361	206	1,373	240	155	83	88	122	448	149	130	106	223	172
Netherlands	16	9	45	17	9	19	17	62	7	11	3	0	1	15	5	6	11	6	7
Other Europe	79	83	280	47	66	112	139	364	61	82	42	14	43	181	57	47	30	38	48
France	14	13	43	28	17	21	7	73	7	17	12	1	4	34	5	6	2	3	0
Italy	12	6	28	7	13	9	3	32	5	3	0	0	4	7	8	17	10	14	6
Other Country	13	15	58	42	12	8	12	74	8	21	20	7	16	64	12	11	10	30	49
<b>Total</b>	<b>3,874</b>	<b>3,808</b>	<b>13,807</b>	<b>3,458</b>	<b>3,960</b>	<b>4,282</b>	<b>4,102</b>	<b>15,802</b>	<b>2,474</b>	<b>2,317</b>	<b>1,340</b>	<b>459</b>	<b>1,081</b>	<b>5,197</b>	<b>1,362</b>	<b>1,544</b>	<b>1,900</b>	<b>1,339</b>	<b>1,835</b>
	<b>Percentage Change</b>																		
Australia	37.6	38.2	39.3	37.4	41.0	38.0	34.8	37.8	36.6	36.7	36.5	41.2	38.9	37.5	34.1	43.1	40.6	31.6	41.7
Papua New Guinea	8.2	12.5	9.2	12.0	10.7	8.2	15.9	11.7	12.5	11.8	9.9	4.6	10.6	10.4	9.7	7.5	6.7	10.2	6.4
United States	8.6	9.3	8.1	2.7	8.1	7.8	7.4	6.7	8.6	7.9	10.1	7.2	7.4	8.3	7.3	11.6	6.9	7.1	10.3
New Zealand	14.4	7.8	11.5	7.9	9.1	8.8	4.4	7.5	7.1	7.5	8.2	10.7	7.6	8.0	6.3	8.0	13.2	8.0	6.5
United Kingdom	3.0	3.8	3.5	4.1	3.1	3.7	3.9	3.7	3.6	2.8	3.3	2.0	4.3	3.2	4.0	2.3	4.5	2.3	4.6
Japan	5.5	4.9	5.3	7.8	3.8	4.4	4.0	4.9	6.0	4.2	3.4	2.0	2.9	3.5	3.7	2.3	5.6	4.9	3.3
Germany	0.7	0.9	0.8	1.0	0.6	0.7	0.6	0.7	1.1	0.9	1.1	0.4	1.0	0.9	1.4	0.5	1.1	0.2	0.4
Canada	1.5	1.0	1.1	1.1	0.7	0.4	0.4	0.6	0.6	0.6	1.1	0.4	1.0	0.8	1.0	0.8	0.4	1.1	1.4
Other Pacific	2.5	2.9	2.7	1.0	1.5	2.1	2.2	1.7	2.6	2.0	2.5	0.4	1.2	1.8	2.6	1.5	1.8	1.6	1.1
Vanuatu	3.5	4.3	3.8	3.0	3.8	9.2	12.8	7.4	2.9	7.4	5.4	1.7	2.7	5.4	3.2	1.7	2.9	1.7	2.0
Hong Kong	0.5	0.4	0.7	0.2	0.8	0.2	0.5	0.4	0.5	1.0	1.0	2.4	1.6	1.3	1.6	2.5	2.6	1.9	0.9
Fiji	3.3	3.3	3.6	4.9	4.7	4.1	3.8	4.4	4.6	4.7	5.5	3.1	3.2	4.4	7.6	4.1	4.7	5.8	5.9
Other Asia	7.1	7.5	7.1	12.7	9.3	8.4	5.0	8.7	9.7	6.7	6.2	19.2	11.3	8.6	10.9	8.4	5.6	16.7	9.4
Netherlands	0.4	0.2	0.3	0.5	0.2	0.4	0.4	0.4	0.3	0.5	0.2	0.0	0.1	0.3	0.4	0.4	0.6	0.4	0.4
Other Europe	2.0	2.2	2.0	1.4	1.7	2.6	3.4	2.3	2.5	3.5	3.1	3.1	4.0	3.5	4.2	3.0	1.6	2.8	2.6
France	0.4	0.3	0.3	0.8	0.4	0.5	0.2	0.5	0.3	0.7	0.9	0.2	0.4	0.7	0.4	0.4	0.1	0.2	0.0
Italy	0.3	0.2	0.2	0.2	0.3	0.2	0.1	0.2	0.2	0.1	0.0	0.0	0.4	0.1	0.6	1.1	0.5	1.0	0.3
Other Country	0.3	0.4	0.4	1.2	0.3	0.2	0.3	0.5	0.3	0.9	1.5	1.5	1.5	1.2	0.9	0.7	0.5	2.2	2.7
<b>Total</b>	<b>100.0</b>	<b>100.0</b>	<b>100.0</b>	<b>100.0</b>	<b>100.0</b>	<b>100.0</b>	<b>100.0</b>	<b>100.0</b>	<b>100.0</b>	<b>100.0</b>	<b>100.0</b>	<b>100.0</b>	<b>100.0</b>	<b>100.0</b>	<b>100.0</b>	<b>100.0</b>	<b>100.0</b>	<b>100.0</b>	<b>100.0</b>

Note: "@" -Q2, Q3, Q4; "£" 2001 Q4 and 2002 no data from data source

Table 3.1.3 Visitor arrivals by year and month 1990 to second quarter 2003

Month	Y e a r												
	1990	1991	1992	1993	1994	1995	1996	1997	1998	1999@	2000	2001£	2003
January	667	621	807	912	374	776	857	605	1,081	834	758	422	364
February	479	653	536	827	660	736	635	859	899	716	715	440	521
March	921	994	811	825	819	728	719	1,103	1,478	924	844	500	454
April	959	907	723	952	1,108	929	923	1,124	1,238		655	499	609
May	804	893	1,277	958	989	1,028	477	1,153	1,212		545	537	483
June	423	1,184	921	725	1,134	917	435	1,281	1,510		140	508	743
July	867	1,367	1,427	865	1,454	1,401	1,016	1,437	1,429		152	619	
August	881	939	1,496	1,415	884	775	1,410	1,118	1,510		157	639	
September	973	1,137	1,283	1,316	1,305	628	967	1,319	1,343		150	642	
October	759	884	966	1,325	1,072	1,112	1,106	1,075	1,316		317		
November	607	590	1,272	836	879	986	646	1,476	1,417		392		
December	855	936	927	614	1,241	1,192	1,125	1,257	1,369		495		
<b>Total</b>	<b>9,195</b>	<b>11,105</b>	<b>12,446</b>	<b>11,570</b>	<b>11,919</b>	<b>11,208</b>	<b>10,316</b>	<b>13,807</b>	<b>15,802</b>	<b>2,474</b>	<b>5,320</b>	<b>4,806</b>	<b>3,174</b>
<b>Percentage</b>													
January	7.3	5.6	6.5	7.9	3.1	6.9	8.3	4.4	6.8	33.7	14.2	8.8	11.5
February	5.2	5.9	4.3	7.1	5.5	6.6	6.2	6.2	5.7	28.9	13.4	9.2	16.4
March	10.0	9.0	6.5	7.1	6.9	6.5	7.0	8.0	9.4	37.3	15.9	10.4	14.3
April	10.4	8.2	5.8	8.2	9.3	8.3	8.9	8.1	7.8		12.3	10.4	19.2
May	8.7	8.0	10.3	8.3	8.3	9.2	4.6	8.4	7.7		10.2	11.2	15.2
June	4.6	10.7	7.4	6.3	9.5	8.2	4.2	9.3	9.6		2.6	10.6	23.4
July	9.4	12.3	11.5	7.5	12.2	12.5	9.8	10.4	9.0		2.9	12.9	
August	9.6	8.5	12.0	12.2	7.4	6.9	13.7	8.1	9.6		3.0	13.3	
September	10.6	10.2	10.3	11.4	10.9	5.6	9.4	9.6	8.5		2.8	13.4	
October	8.3	8.0	7.8	11.5	9.0	9.9	10.7	7.8	8.3		6.0		
November	6.6	5.3	10.2	7.2	7.4	8.8	6.3	10.7	9.0		7.4		
December	9.3	8.4	7.4	5.3	10.4	10.6	10.9	9.1	8.7		9.3		
<b>Total</b>	<b>100.0</b>	<b>100.0</b>	<b>100.0</b>	<b>100.0</b>	<b>100.0</b>	<b>100.0</b>	<b>100.0</b>	<b>100.0</b>	<b>100.0</b>	<b>100.0</b>	<b>100.0</b>	<b>100.0</b>	<b>100.0</b>

Note: "@"(Qs 2, 3, 4) "£"(Q4) and "2002" no data from data source



**Table 3.1.4 Tourists by year, quarter, country and average length of stay second quarter 2000 to second quarter 2003**

Country of Usual Residence	2000								2001						2003			
	Quarter 2		Quarter 3		Quarter 4		Total		Quarter 1		Quarter 2		Quarter 3		Quarter 1		Quarter 2	
	tourist	day	tourist	day	tourist	day	tourist	day	tourist	day	tourist	day	tourist	day	tourist	day	tourist	day
Australia	170	13	50	28	97	12	577	17	116	19	264	17	305	15	113	7	302	15
Papua New Guinea	23	22	6	15	35	21	98	19	10	19	23	18	12	33	34	13	19	13
United States	98	11	26	12	58	23	305	15	72	11	140	15	102	17	78	8	115	15
New Zealand	18	17	7	22	9	30	63	20	4	12	35	16	78	25	10	29	19	17
United Kingdom	19	16	2	14	16	22	72	18	18	18	21	28	48	20	13	10	49	20
Japan	9	9	2	11	8	19	46	13	4	11	17	15	50	17	24	14	19	13
Germany	13	12	0	0	8	20	42	10	14	20	5	19	14	22	2	6	1	18
Canada	5	11	2	16	5	12	17	12	11	25	7	26	6	17	7	18	3	31
Other Pacific	0	0	1	15	5	39	12	17	1	4	5	36	9	46	0	0	4	10
Vanuatu	3	26	1	7	6	30	14	17	10	12	4	17	8	27	1	7	5	15
Hong Kong	5	20	5	18	3	30	15	20	8	35	12	31	11	19	6	90	6	30
Fiji	8	20	1	7	2	19	16	20	5	11	4	11	7	30	6	21	7	11
Other Asia	17	18	17	33	22	49	90	29	47	42	45	25	30	15	51	21	46	21
Netherlands	1	30	0	0	0	0	5	9	3	34	3	22	9	45	6	53	5	37
Other Europe	30	17	5	27	23	34	118	24	29	16	32	18	26	32	24	56	32	31
France	1	14	0	0	2	11	5	8	1	6	3	12	2	32	2	49	0	0
Italy	0	0	0	0	4	25	7	8	5	12	16	22	6	19	3	17	5	11
Other Country	3	14	3	60	7	7	18	28	6	13	1	7	1	90	14	14	14	17
<b>Total</b>	<b>423</b>	<b>17</b>	<b>128</b>	<b>20</b>	<b>310</b>	<b>24</b>	<b>1,520</b>	<b>19</b>	<b>364</b>	<b>18</b>	<b>637</b>	<b>20</b>	<b>724</b>	<b>29</b>	<b>394</b>	<b>24</b>	<b>651</b>	<b>18</b>

Note: 2001 Q1, and 2002 -no data from data source

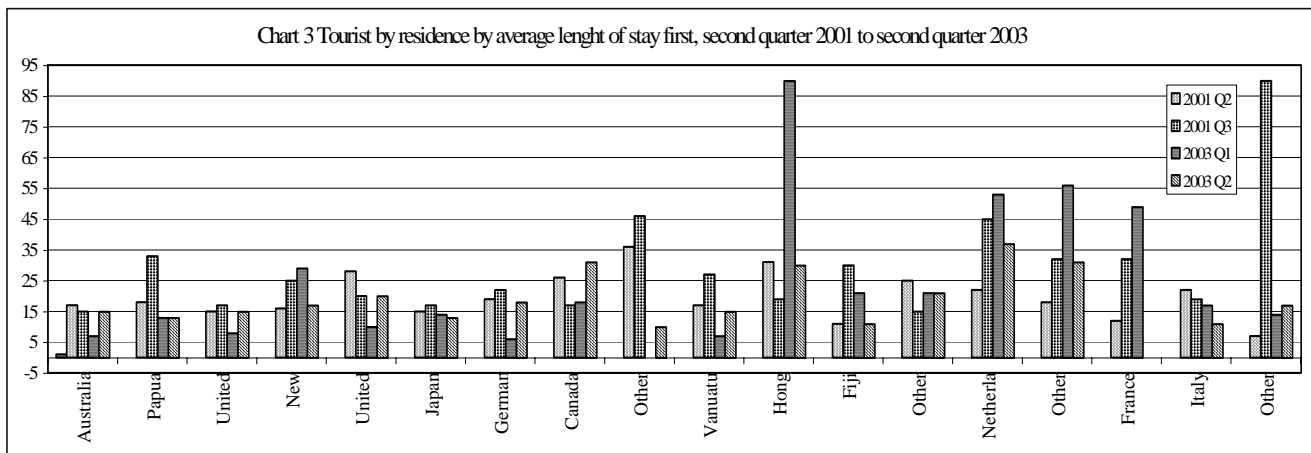


Table 3.1.5 Visitor arrivals by country of residence by purpose of visit and sex, second quarter 2003

Country of Usual Residence	Business & Conference		Holiday & Vocation		Transit & Stopover		Visit friends & Relatives		Other		Total		
	m	f	m	f	m	f	m	f	m	f	m	f	All
Australia	220	50	191	111	4	0	64	49	60	17	539	227	766
Papua New Guinea	57	10	9	10	10	1	13	5	3	0	92	26	118
United States	21	4	76	39	1	0	15	13	12	8	125	64	189
New Zealand	59	6	11	8	1	0	12	11	8	4	91	29	120
United Kingdom	14	5	27	22	1	0	5	7	2	1	49	35	84
Japan	26	0	11	8	6	0	3	5	2	0	48	13	61
Germany	7	0	1	0	0	0	0	0	0	0	8	0	8
Canada	17	3	2	1	0	0	1	0	2	0	22	4	26
Other Pacific	3	6	3	1	2	1	1	1	2	0	11	9	20
Vanuatu	21	4	3	2	0	0	3	2	2	0	29	8	37
Hong Kong	7	0	4	2	0	0	0	2	1	0	12	4	16
Fiji	66	22	4	3	4	0	0	4	2	3	76	32	108
Other Asia	86	3	36	10	2	0	13	6	15	1	152	20	172
Netherlands	0	0	3	2	0	0	0	0	1	1	4	3	7
Other Europe	9	1	18	14	1	1	1	1	1	1	30	18	48
France	0	0	3	2	0	0	1	0	0	0	4	2	6
Italy	14	6	8	6	3	2	3	3	4	0	32	17	49
Other Country	0	0	0	0	0	0	0	0	0	0	0	0	0
<b>Total</b>	<b>627</b>	<b>120</b>	<b>410</b>	<b>241</b>	<b>35</b>	<b>5</b>	<b>135</b>	<b>109</b>	<b>117</b>	<b>36</b>	<b>1,324</b>	<b>511</b>	<b>1,835</b>
<b>Percentage</b>													
Australia	35.1	41.7	46.6	46.1	11.4	0.0	47.4	45.0	51.3	47.2	40.7	44.4	41.7
Papua New Guinea	9.1	8.3	2.2	4.1	28.6	20.0	9.6	4.6	2.6	0.0	6.9	5.1	6.4
United States	3.3	3.3	18.5	16.2	2.9	0.0	11.1	11.9	10.3	22.2	9.4	12.5	10.3
New Zealand	9.4	5.0	2.7	3.3	2.9	0.0	8.9	10.1	6.8	11.1	6.9	5.7	6.5
United Kingdom	2.2	4.2	6.6	9.1	2.9	0.0	3.7	6.4	1.7	2.8	3.7	6.8	4.6
Japan	4.1	0.0	2.7	3.3	17.1	0.0	2.2	4.6	1.7	0.0	3.6	2.5	3.3
Germany	1.1	0.0	0.2	0.0	0.0	0.0	0.0	0.0	0.0	0.0	0.6	0.0	0.4
Canada	2.7	2.5	0.5	0.4	0.0	0.0	0.7	0.0	1.7	0.0	1.7	0.8	1.4
Other Pacific	0.5	5.0	0.7	0.4	5.7	20.0	0.7	0.9	1.7	0.0	0.8	1.8	1.1
Vanuatu	3.3	3.3	0.7	0.8	0.0	0.0	2.2	1.8	1.7	0.0	2.2	1.6	2.0
Hong Kong	1.1	0.0	1.0	0.8	0.0	0.0	0.0	1.8	0.9	0.0	0.9	0.8	0.9
Fiji	10.5	18.3	1.0	1.2	11.4	0.0	0.0	3.7	1.7	8.3	5.7	6.3	5.9
Other Asia	13.7	2.5	8.8	4.1	5.7	0.0	9.6	5.5	12.8	2.8	11.5	3.9	9.4
Netherlands	0.0	0.0	0.7	0.8	0.0	0.0	0.0	0.0	0.9	2.8	0.3	0.6	0.4
Other Europe	1.4	0.8	4.4	5.8	2.9	20.0	0.7	0.9	0.9	2.8	2.3	3.5	2.6
France	0.0	0.0	0.7	0.8	0.0	0.0	0.7	0.0	0.0	0.0	0.3	0.4	0.3
Italy	2.2	5.0	2.0	2.5	8.6	40.0	2.2	2.8	3.4	0.0	2.4	3.3	2.7
Other Country	0.0	0.0	0.0	0.0	0.0	0.0	0.0	0.0	0.0	0.0	0.0	0.0	0.0
<b>Total</b>	<b>100.0</b>	<b>100.0</b>	<b>100.0</b>	<b>100.0</b>	<b>100.0</b>	<b>100.0</b>	<b>100.0</b>	<b>100.0</b>	<b>100.0</b>	<b>100.0</b>	<b>100.0</b>	<b>100.0</b>	<b>100.0</b>

Table 3.1.6 Visitor arrivals classified by country of residence by broad age groups and sex second quarter 2003

Country of Usual Residence	Age-Group																Total		
	0-14		15-24		25-34		35-44		45-54		55-64		65+		Not Stated		m	f	all
	m	f	m	f	m	f	m	f	m	f	m	f	m	f					
Australia	21	13	27	18	54	42	112	50	148	67	137	25	33	10	7	2	539	227	766
Papua New Guinea	3	5	5	2	6	8	36	3	23	5	12	1	2	0	5	2	92	26	118
United States	1	1	19	12	9	9	19	12	35	17	27	9	13	3	2	1	125	64	189
New Zealand	3	2	0	1	8	7	25	6	32	6	18	5	4	2	1	0	91	29	120
United Kingdom	2	1	4	7	12	12	13	7	7	3	7	3	4	0	0	2	49	35	84
Japan	1	3	1	0	5	3	14	3	11	3	12	0	4	1	0	0	48	13	61
Germany	0	0	0	0	1	0	2	0	1	0	2	0	2	0	0	0	8	0	8
Canada	0	0	0	0	8	1	3	1	7	2	2	0	1	0	1	0	22	4	26
Other Pacific	0	0	0	2	2	2	4	1	2	2	3	2	0	0	0	0	11	9	20
Vanuatu	0	0	1	0	6	3	6	2	11	2	4	1	0	0	1	0	29	8	37
Hong Kong	0	1	1	1	6	0	1	0	3	0	1	0	0	1	0	1	12	4	16
Fiji	0	0	1	0	14	12	15	6	24	9	20	3	1	2	1	0	76	32	108
Other Asia	2	3	2	0	27	3	37	5	53	5	20	1	4	0	7	3	152	20	172
Netherlands	1	1	0	0	0	1	2	0	1	1	0	0	0	0	0	0	4	3	7
Other Europe	0	0	3	0	10	6	2	3	5	3	4	5	5	1	1	0	30	18	48
France	0	0	0	0	0	0	0	0	0	0	0	0	0	0	0	0	0	0	0
Italy	0	0	1	1	0	0	0	0	3	1	0	0	0	0	0	0	4	2	6
Other Country	1	2	1	0	7	7	13	4	5	3	4	0	1	1	0	0	32	17	49
<b>Total</b>	<b>35</b>	<b>32</b>	<b>66</b>	<b>44</b>	<b>175</b>	<b>116</b>	<b>304</b>	<b>103</b>	<b>371</b>	<b>129</b>	<b>273</b>	<b>55</b>	<b>74</b>	<b>21</b>	<b>26</b>	<b>11</b>	<b>1,324</b>	<b>511</b>	<b>1,835</b>
	<b>Percentage</b>																		
Australia	2.7	1.7	3.5	2.3	7.0	5.5	14.6	6.5	19.3	8.7	17.9	3.3	4.3	1.3	0.9	0.3	70.4	29.6	100.0
Papua New Guinea	2.5	4.2	4.2	1.7	5.1	6.8	30.5	2.5	19.5	4.2	10.2	0.8	1.7	0.0	4.2	1.7	78.0	22.0	100.0
United States	0.5	0.5	10.1	6.3	4.8	4.8	10.1	6.3	18.5	9.0	14.3	4.8	6.9	1.6	1.1	0.5	66.1	33.9	100.0
New Zealand	2.5	1.7	0.0	0.8	6.7	5.8	20.8	5.0	26.7	5.0	15.0	4.2	3.3	1.7	0.8	0.0	75.8	24.2	100.0
United Kingdom	2.4	1.2	4.8	8.3	14.3	14.3	15.5	8.3	8.3	3.6	8.3	3.6	4.8	0.0	0.0	2.4	58.3	41.7	100.0
Japan	1.6	4.9	1.6	0.0	8.2	4.9	23.0	4.9	18.0	4.9	19.7	0.0	6.6	1.6	0.0	0.0	78.7	21.3	100.0
Germany	0.0	0.0	0.0	0.0	12.5	0.0	25.0	0.0	12.5	0.0	25.0	0.0	25.0	0.0	0.0	0.0	100.0	0.0	100.0
Canada	0.0	0.0	0.0	0.0	30.8	3.8	11.5	3.8	26.9	7.7	7.7	0.0	3.8	0.0	3.8	0.0	84.6	15.4	100.0
Other Pacific	0.0	0.0	0.0	10.0	10.0	10.0	20.0	5.0	10.0	10.0	15.0	10.0	0.0	0.0	0.0	0.0	55.0	45.0	100.0
Vanuatu	0.0	0.0	2.7	0.0	16.2	8.1	16.2	5.4	29.7	5.4	10.8	2.7	0.0	0.0	2.7	0.0	78.4	21.6	100.0
Hong Kong	0.0	6.3	6.3	6.3	37.5	0.0	6.3	0.0	18.8	0.0	6.3	0.0	0.0	6.3	0.0	6.3	75.0	25.0	100.0
Fiji	0.0	0.0	0.9	0.0	13.0	11.1	13.9	5.6	22.2	8.3	18.5	2.8	0.9	1.9	0.9	0.0	70.4	29.6	100.0
Other Asia	1.2	1.7	1.2	0.0	15.7	1.7	21.5	2.9	30.8	2.9	11.6	0.6	2.3	0.0	4.1	1.7	88.4	11.6	100.0
Netherlands	14.3	14.3	0.0	0.0	0.0	14.3	28.6	0.0	14.3	14.3	0.0	0.0	0.0	0.0	0.0	0.0	57.1	42.9	100.0
Other Europe	0.0	0.0	6.3	0.0	20.8	12.5	4.2	6.3	10.4	6.3	8.3	10.4	10.4	2.1	2.1	0.0	62.5	37.5	100.0
France	0.0	0.0	0.0	0.0	0.0	0.0	0.0	0.0	0.0	0.0	0.0	0.0	0.0	0.0	0.0	0.0	0.0	0.0	0.0
Italy	0.0	0.0	16.7	16.7	0.0	0.0	0.0	0.0	50.0	16.7	0.0	0.0	0.0	0.0	0.0	0.0	66.7	33.3	100.0
Other Country	2.0	4.1	2.0	0.0	14.3	14.3	26.5	8.2	10.2	6.1	8.2	0.0	2.0	2.0	0.0	0.0	65.3	34.7	100.0
<b>Total</b>	<b>1.9</b>	<b>1.7</b>	<b>3.6</b>	<b>2.4</b>	<b>9.5</b>	<b>6.3</b>	<b>16.6</b>	<b>5.6</b>	<b>20.2</b>	<b>7.0</b>	<b>14.9</b>	<b>3.0</b>	<b>4.0</b>	<b>1.1</b>	<b>1.4</b>	<b>0.6</b>	<b>72.2</b>	<b>27.8</b>	<b>100.0</b>

Table 3.1.7 Visitor arrivals classified by country of residence by occupation and sex, second quarter 2003

Country of Usual Residence	Professional and Technical		Administration and Managerial		Clerical & Related Work		Sales Worker		Service Worker		Agriculture Forestry Fishery		Production & Related Work		Other		No Work		Total		
	m	f	m	f	m	f	m	f	m	f	m	f	m	f	m	f	m	f	m	f	All
Australia	217	114	113	29	18	15	37	13	20	24	11	1	49	3	54	15	20	13	539	227	766
Papua New Guinea	49	13	23	0	5	1	0	0	3	7	0	0	3	0	5	0	4	5	92	26	118
United States	78	40	11	1	1	3	8	2	1	10	0	0	2	0	23	7	1	1	125	64	189
New Zealand	30	10	24	3	2	2	2	2	18	6	4	1	3	0	4	2	4	3	91	29	120
United Kingdom	29	19	8	3	1	3	1	1	1	4	0	0	0	0	6	3	3	2	49	35	84
Japan	27	4	4	0	4	0	4	1	0	2	1	0	1	0	6	3	1	3	48	13	61
Germany	5	0	1	0	0	0	0	0	0	0	0	0	2	0	0	0	0	0	8	0	8
Canada	15	3	1	0	0	0	0	0	1	0	0	0	0	0	5	1	0	0	22	4	26
Other Pacific	4	1	5	3	1	1	0	0	0	2	0	0	1	2	0	0	0	0	11	9	20
Vanuatu	18	6	7	1	1	0	0	0	1	1	1	0	1	0	0	0	0	0	29	8	37
Hong Kong	3	0	1	0	1	0	3	0	2	1	0	0	1	0	1	2	0	1	12	4	16
Fiji	53	21	13	2	4	2	1	1	0	1	0	0	2	0	3	5	0	0	76	32	108
Other Asia	22	7	23	0	3	0	44	4	2	5	12	0	27	0	18	2	1	2	152	20	172
Netherlands	3	2	0	0	0	0	0	0	0	0	0	0	0	0	0	0	1	1	4	3	7
Other Europe	16	12	3	1	1	0	5	1	0	2	0	0	3	0	2	2	0	0	30	18	48
France	0	0	0	0	0	0	0	0	0	0	0	0	0	0	0	0	0	0	0	0	0
Italy	4	1	0	1	0	0	0	0	0	0	0	0	0	0	0	0	0	0	4	2	6
Other Country	13	10	2	0	0	0	9	0	0	2	0	0	0	0	7	3	1	2	32	17	49
<b>Total</b>	<b>586</b>	<b>263</b>	<b>239</b>	<b>44</b>	<b>42</b>	<b>27</b>	<b>114</b>	<b>25</b>	<b>49</b>	<b>67</b>	<b>29</b>	<b>2</b>	<b>95</b>	<b>5</b>	<b>134</b>	<b>45</b>	<b>36</b>	<b>33</b>	<b>1,324</b>	<b>511</b>	<b>1,835</b>
	<b>Percentage</b>																				
Australia	28.3	14.9	14.8	3.8	2.3	2.0	4.8	1.7	2.6	3.1	1.4	0.1	6.4	0.4	7.0	2.0	2.6	1.7	70.4	29.6	100.0
Papua New Guinea	41.5	11.0	19.5	0.0	4.2	0.8	0.0	0.0	2.5	5.9	0.0	0.0	2.5	0.0	4.2	0.0	3.4	4.2	78.0	22.0	100.0
United States	41.3	21.2	5.8	0.5	0.5	1.6	4.2	1.1	0.5	5.3	0.0	0.0	1.1	0.0	12.2	3.7	0.5	0.5	66.1	33.9	100.0
New Zealand	25.0	8.3	20.0	2.5	1.7	1.7	1.7	1.7	15.0	5.0	3.3	0.8	2.5	0.0	3.3	1.7	3.3	2.5	75.8	24.2	100.0
United Kingdom	34.5	22.6	9.5	3.6	1.2	3.6	1.2	1.2	1.2	4.8	0.0	0.0	0.0	0.0	7.1	3.6	3.6	2.4	58.3	41.7	100.0
Japan	44.3	6.6	6.6	0.0	6.6	0.0	6.6	1.6	0.0	3.3	1.6	0.0	1.6	0.0	9.8	4.9	1.6	4.9	78.7	21.3	100.0
Germany	62.5	0.0	12.5	0.0	0.0	0.0	0.0	0.0	0.0	0.0	0.0	0.0	25.0	0.0	0.0	0.0	0.0	0.0	100.0	0.0	100.0
Canada	57.7	11.5	3.8	0.0	0.0	0.0	0.0	0.0	3.8	0.0	0.0	0.0	0.0	0.0	19.2	3.8	0.0	0.0	84.6	15.4	100.0
Other Pacific	20.0	5.0	25.0	15.0	5.0	5.0	0.0	0.0	0.0	10.0	0.0	0.0	5.0	10.0	0.0	0.0	0.0	0.0	55.0	45.0	100.0
Vanuatu	48.6	16.2	18.9	2.7	2.7	0.0	0.0	0.0	2.7	2.7	2.7	0.0	2.7	0.0	0.0	0.0	0.0	0.0	78.4	21.6	100.0
Hong Kong	18.8	0.0	6.3	0.0	6.3	0.0	18.8	0.0	12.5	6.3	0.0	0.0	6.3	0.0	6.3	12.5	0.0	6.3	75.0	25.0	100.0
Fiji	49.1	19.4	12.0	1.9	3.7	1.9	0.9	0.9	0.0	0.9	0.0	0.0	1.9	0.0	2.8	4.6	0.0	0.0	70.4	29.6	100.0
Other Asia	12.8	4.1	13.4	0.0	1.7	0.0	25.6	2.3	1.2	2.9	7.0	0.0	15.7	0.0	10.5	1.2	0.6	1.2	88.4	11.6	100.0
Netherlands	42.9	28.6	0.0	0.0	0.0	0.0	0.0	0.0	0.0	0.0	0.0	0.0	0.0	0.0	0.0	0.0	14.3	14.3	57.1	42.9	100.0
Other Europe	33.3	25.0	6.3	2.1	2.1	0.0	10.4	2.1	0.0	4.2	0.0	0.0	6.3	0.0	4.2	4.2	0.0	0.0	62.5	37.5	100.0
France	0.0	0.0	0.0	0.0	0.0	0.0	0.0	0.0	0.0	0.0	0.0	0.0	0.0	0.0	0.0	0.0	0.0	0.0	0.0	0.0	0.0
Italy	66.7	16.7	0.0	16.7	0.0	0.0	0.0	0.0	0.0	0.0	0.0	0.0	0.0	0.0	0.0	0.0	0.0	0.0	66.7	33.3	100.0
Other Country	26.5	20.4	4.1	0.0	0.0	0.0	18.4	0.0	0.0	4.1	0.0	0.0	0.0	0.0	14.3	6.1	2.0	4.1	65.3	34.7	100.0
<b>Total</b>	<b>31.9</b>	<b>14.3</b>	<b>13.0</b>	<b>2.4</b>	<b>2.3</b>	<b>1.5</b>	<b>6.2</b>	<b>1.4</b>	<b>2.7</b>	<b>3.7</b>	<b>1.6</b>	<b>0.1</b>	<b>5.2</b>	<b>0.3</b>	<b>7.3</b>	<b>2.5</b>	<b>2.0</b>	<b>1.8</b>	<b>72.2</b>	<b>27.8</b>	<b>100.0</b>

Table 3.1.8 Visitor arrivals classified by country of residence by carrier and sex, second quarter 2003

Country of Usual Residence	Solomon Airlines		Air Pacific		Air Niugini		Qantas		Air Nauru		Unschedule		RAAF		USAF		RNAF		Other		Total				
	m	f	m	f	m	f	m	f	m	f	m	f	m	f	m	f	m	f	m	f	m	f	all		
Australia	515	219	1	0	12	6	0	0	0	0	6	0	5	2	0	0	0	0	0	0	0	0	539	227	766
Papua New Guinea	16	1	0	0	75	25	0	0	0	0	1	0	0	0	0	0	0	0	0	0	0	0	92	26	118
United States	90	52	8	1	2	1	0	0	0	0	3	0	0	0	0	0	0	0	0	22	10	125	64	189	
New Zealand	81	28	0	0	7	1	0	0	0	0	3	0	0	0	0	0	0	0	0	0	0	91	29	120	
United Kingdom	41	34	1	0	4	1	0	0	0	0	0	0	0	0	0	0	0	0	3	0	49	35	84		
Japan	28	11	0	0	18	2	0	0	0	0	1	0	0	0	0	0	0	0	1	0	48	13	61		
Germany	6	0	0	0	2	0	0	0	0	0	0	0	0	0	0	0	0	0	0	0	0	8	0	8	
Canada	18	4	0	0	0	0	0	0	0	0	4	0	0	0	0	0	0	0	0	0	0	22	4	26	
Other Pacific	9	9	1	0	1	0	0	0	0	0	0	0	0	0	0	0	0	0	0	0	0	11	9	20	
Vanuatu	28	8	0	0	1	0	0	0	0	0	0	0	0	0	0	0	0	0	0	0	0	29	8	37	
Hong Kong	8	1	0	0	4	3	0	0	0	0	0	0	0	0	0	0	0	0	0	0	0	12	4	16	
Fiji	58	26	3	0	2	4	0	0	0	0	2	0	0	0	0	0	0	0	11	2	76	32	108		
Other Asia	99	15	1	0	51	5	0	0	0	0	0	0	0	0	0	0	0	0	1	0	152	20	172		
Netherlands	3	3	0	0	1	0	0	0	0	0	0	0	0	0	0	0	0	0	0	0	0	4	3	7	
Other Europe	26	18	0	0	4	0	0	0	0	0	0	0	0	0	0	0	0	0	0	0	0	30	18	48	
France	0	0	0	0	0	0	0	0	0	0	0	0	0	0	0	0	0	0	0	0	0	0	0	0	
Italy	2	1	0	0	1	0	0	0	0	0	0	0	0	0	0	0	0	0	1	1	4	2	6		
Other Country	25	17	0	0	7	0	0	0	0	0	0	0	0	0	0	0	0	0	0	0	0	32	17	49	
<b>Total</b>	<b>1053</b>	<b>447</b>	<b>15</b>	<b>1</b>	<b>192</b>	<b>48</b>	<b>0</b>	<b>0</b>	<b>0</b>	<b>0</b>	<b>20</b>	<b>0</b>	<b>5</b>	<b>2</b>	<b>0</b>	<b>0</b>	<b>0</b>	<b>0</b>	<b>39</b>	<b>13</b>	<b>1,324</b>	<b>511</b>	<b>1,835</b>		
<b>Percentage</b>																									
Australia	67.2	28.6	0.1	0.0	1.6	0.8	0.0	0.0	0.0	0.0	0.8	0.0	0.7	0.3	0.0	0.0	0.0	0.0	0.0	0.0	0.0	70.4	29.6	100.0	
Papua New Guinea	13.6	0.8	0.0	0.0	63.6	21.2	0.0	0.0	0.0	0.0	0.8	0.0	0.0	0.0	0.0	0.0	0.0	0.0	0.0	0.0	0.0	78.0	22.0	100.0	
United States	47.6	27.5	4.2	0.5	1.1	0.5	0.0	0.0	0.0	0.0	1.6	0.0	0.0	0.0	0.0	0.0	0.0	0.0	11.6	5.3	66.1	33.9	100.0		
New Zealand	67.5	23.3	0.0	0.0	5.8	0.8	0.0	0.0	0.0	0.0	2.5	0.0	0.0	0.0	0.0	0.0	0.0	0.0	0.0	0.0	0.0	75.8	24.2	100.0	
United Kingdom	48.8	40.5	1.2	0.0	4.8	1.2	0.0	0.0	0.0	0.0	0.0	0.0	0.0	0.0	0.0	0.0	0.0	0.0	3.6	0.0	58.3	41.7	100.0		
Japan	45.9	18.0	0.0	0.0	29.5	3.3	0.0	0.0	0.0	0.0	1.6	0.0	0.0	0.0	0.0	0.0	0.0	0.0	1.6	0.0	78.7	21.3	100.0		
Germany	75.0	0.0	0.0	0.0	25.0	0.0	0.0	0.0	0.0	0.0	0.0	0.0	0.0	0.0	0.0	0.0	0.0	0.0	0.0	0.0	0.0	100.0	0.0	100.0	
Canada	69.2	15.4	0.0	0.0	0.0	0.0	0.0	0.0	0.0	0.0	15.4	0.0	0.0	0.0	0.0	0.0	0.0	0.0	0.0	0.0	0.0	84.6	15.4	100.0	
Other Pacific	45.0	45.0	5.0	0.0	5.0	0.0	0.0	0.0	0.0	0.0	0.0	0.0	0.0	0.0	0.0	0.0	0.0	0.0	0.0	0.0	0.0	55.0	45.0	100.0	
Vanuatu	75.7	21.6	0.0	0.0	2.7	0.0	0.0	0.0	0.0	0.0	0.0	0.0	0.0	0.0	0.0	0.0	0.0	0.0	0.0	0.0	0.0	78.4	21.6	100.0	
Hong Kong	50.0	6.3	0.0	0.0	25.0	18.8	0.0	0.0	0.0	0.0	0.0	0.0	0.0	0.0	0.0	0.0	0.0	0.0	0.0	0.0	0.0	75.0	25.0	100.0	
Fiji	53.7	24.1	2.8	0.0	1.9	3.7	0.0	0.0	0.0	0.0	1.9	0.0	0.0	0.0	0.0	0.0	0.0	0.0	10.2	1.9	70.4	29.6	100.0		
Other Asia	57.6	8.7	0.6	0.0	29.7	2.9	0.0	0.0	0.0	0.0	0.0	0.0	0.0	0.0	0.0	0.0	0.0	0.0	0.6	0.0	88.4	11.6	100.0		
Netherlands	42.9	42.9	0.0	0.0	14.3	0.0	0.0	0.0	0.0	0.0	0.0	0.0	0.0	0.0	0.0	0.0	0.0	0.0	0.0	0.0	0.0	57.1	42.9	100.0	
Other Europe	54.2	37.5	0.0	0.0	8.3	0.0	0.0	0.0	0.0	0.0	0.0	0.0	0.0	0.0	0.0	0.0	0.0	0.0	0.0	0.0	0.0	62.5	37.5	100.0	
France	0.0	0.0	0.0	0.0	0.0	0.0	0.0	0.0	0.0	0.0	0.0	0.0	0.0	0.0	0.0	0.0	0.0	0.0	0.0	0.0	0.0	0.0	0.0	0.0	
Italy	33.3	16.7	0.0	0.0	16.7	0.0	0.0	0.0	0.0	0.0	0.0	0.0	0.0	0.0	0.0	0.0	0.0	0.0	16.7	16.7	66.7	33.3	100.0		
Other Country	51.0	34.7	0.0	0.0	14.3	0.0	0.0	0.0	0.0	0.0	0.0	0.0	0.0	0.0	0.0	0.0	0.0	0.0	0.0	0.0	0.0	65.3	34.7	100.0	
<b>Total</b>	<b>57.4</b>	<b>24.4</b>	<b>0.8</b>	<b>0.1</b>	<b>10.5</b>	<b>2.6</b>	<b>0.0</b>	<b>0.0</b>	<b>0.0</b>	<b>0.0</b>	<b>1.1</b>	<b>0.0</b>	<b>0.3</b>	<b>0.1</b>	<b>0.0</b>	<b>0.0</b>	<b>0.0</b>	<b>0.0</b>	<b>2.1</b>	<b>0.7</b>	<b>72.2</b>	<b>27.8</b>	<b>100.0</b>		