



Pacific
Community
Communauté
du Pacifique

PIRFO



PACIFIC ISLANDS
REGIONAL FISHERIES OBSERVER

Whale, dolphin and seabird ID cards

Second edition

These identification cards are produced by the Pacific Community (SPC) to help with the identification of species of special interest (protected species) encountered by Fisheries Observers while on board commercial tuna boats that fish in the western and central Pacific Ocean (WCPO). The species included in these cards are the ones commonly recorded by observers on tuna vessels operating in the WCPO. The cards can be easily accessed by observers while working on deck during fishing operations to verify and correctly identify species. The cards also assist in training observers operating within the Western and Central Pacific Fisheries Commission Convention Area.

Funding for the printing of these cards was provided by the Pacific Islands Forum Fisheries Agency (FFA).

This project was coordinated by SPC's Oceanic Fisheries Programme and Fisheries Information Section. Illustrations by Hazel Adams (cover and p. 2–7), Pieter A. Folkens (p. 10–29) and Youngmi Choi (p. 9 and 31–36); illustrations on p. 33 based on pictures by David Dedman and Serge Rivard (head); illustrations on p. 1, 8 and 10–30 courtesy of the Food and Agriculture Organization of the United Nations (FAO).

This publication is based on the *Marine species identification manual for horizontal longline fishermen* by Chapman et al. (2006).

Original text: English

Pacific Community Cataloguing-in-publication data

Pacific Islands Regional Fisheries Observer (PIRFO): whale, dolphin and seabird ID cards – 2nd ed. / Pacific Community

- | | |
|---|---------------------------------------|
| 1. Marine fishes – Identification – Oceania. | 4. Fishery management – Oceania. |
| 2. Marine fishes – Classification – Oceania. | 5. Fishes – Identification – Oceania. |
| 3. Marine mammals – Identification – Oceania. | |

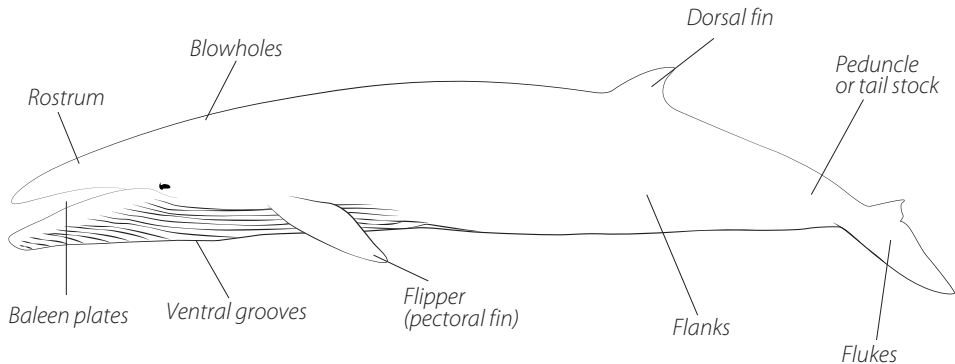
I. Title II. Pacific Community

597.0995

AACR2

ISBN: 978-982-00-1358-2

Baleen whales



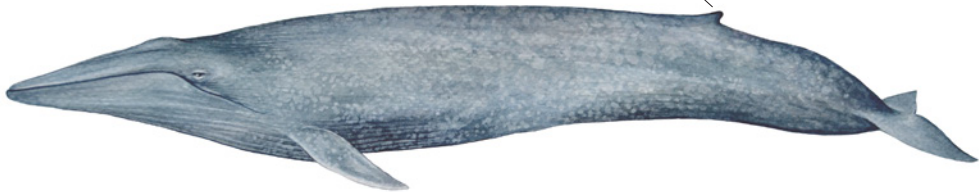
Blue whale

Balaenoptera musculus



Small dorsal fin located far back on the body

Head length 1/4 of whole length



Body blue/grey mottled colouration

Maximum length: 30 m

Fin whale

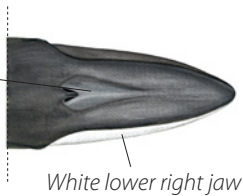
Balaenoptera physalus

FIW

Dorsal fin appears right after blow



*Single median ridge
on the rostrum*



White lower right jaw

Maximum length: 24 m

Sei whale

Balaenoptera borealis



Large and very falcate dorsal fin; tip sometimes pointed



Single distinct ridge on the rostrum

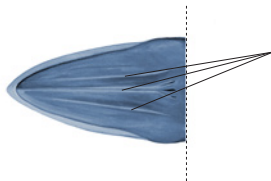


Maximum length: 18 m

Bryde's whale

Balaenoptera edeni

BRW

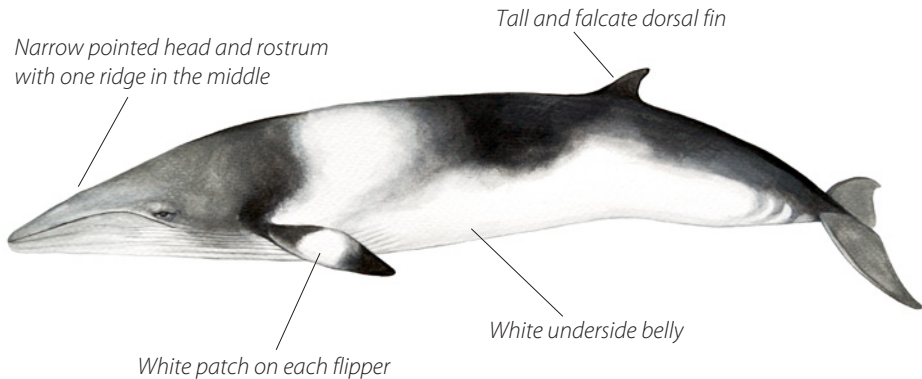


Three distinct longitudinal ridges on the rostrum

Maximum length: 15 m

Minke whale

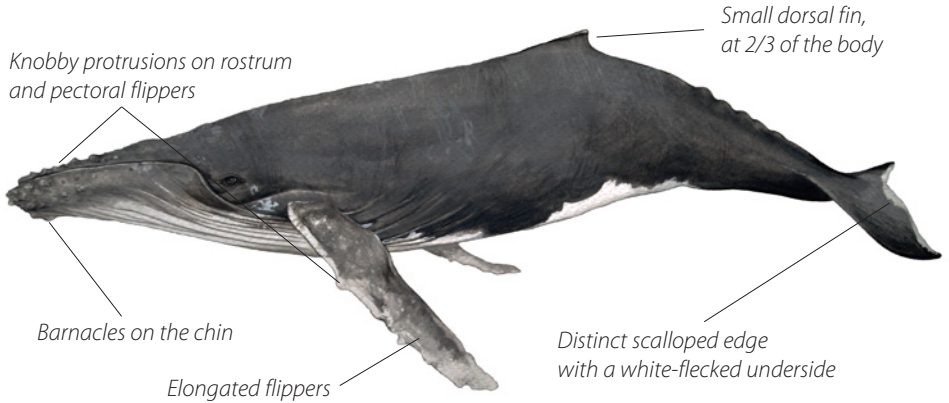
Balaenoptera acutorostrata



Maximum length: 9 m

Humpback whale

Megaptera novaeangliae

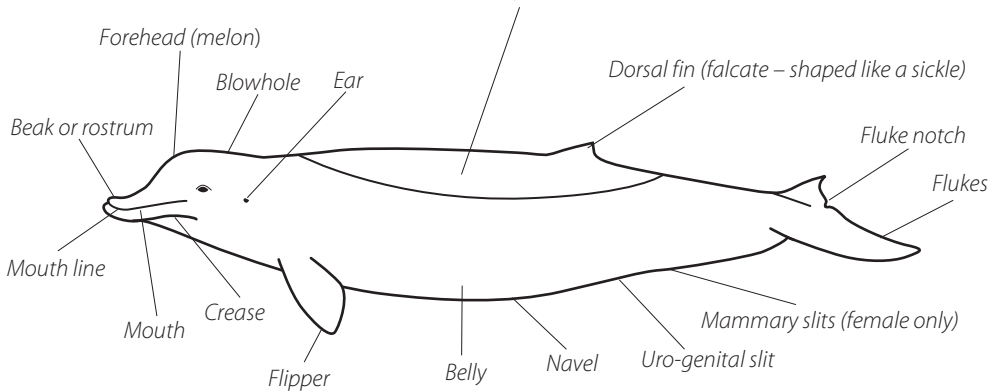


Maximum length: 16 m

Toothed whales



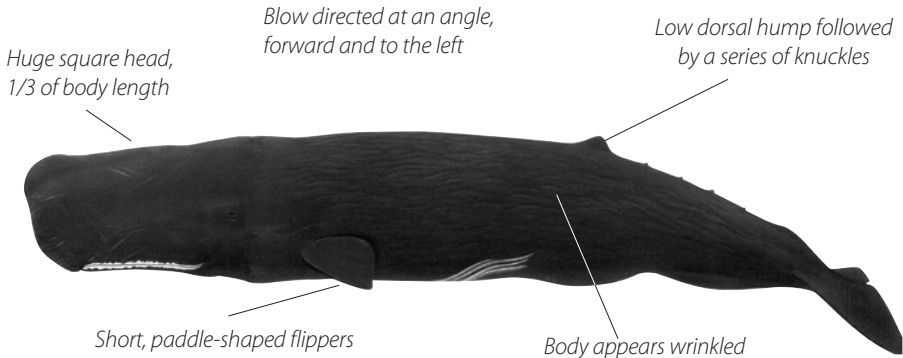
Cape (colour, depth and size may depend on sex, age, life status and where they are seen in the water)



Sperm whale

Physeter macrocephalus

SPW

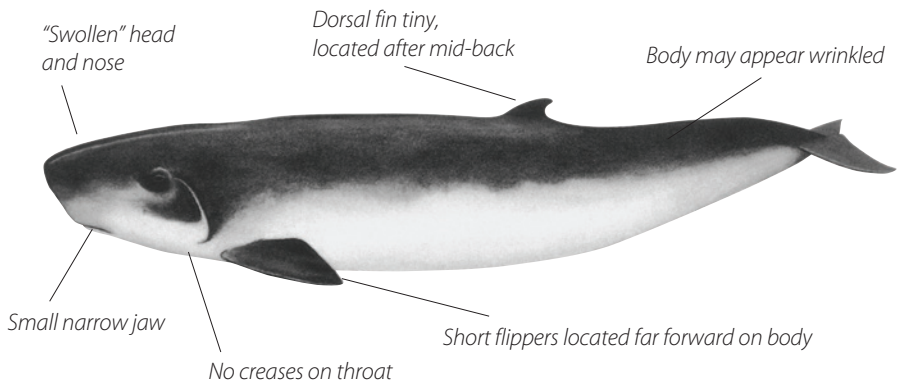


Maximum length: 18 m

Pygmy sperm whale

Kogia breviceps

PYW



Maximum length: 3.7 m

Dwarf sperm whale

Kogia sima



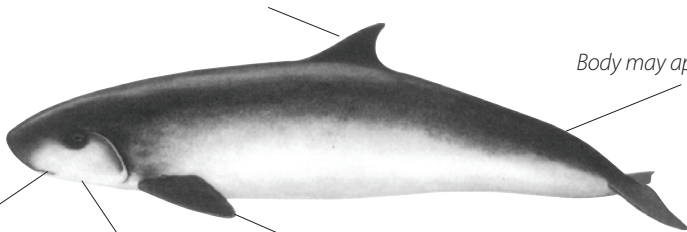
*Dorsal fin small,
located midway along the back*

Body may appear wrinkled

Small narrow jaw

Creases on throat

Short flippers located far forward on body

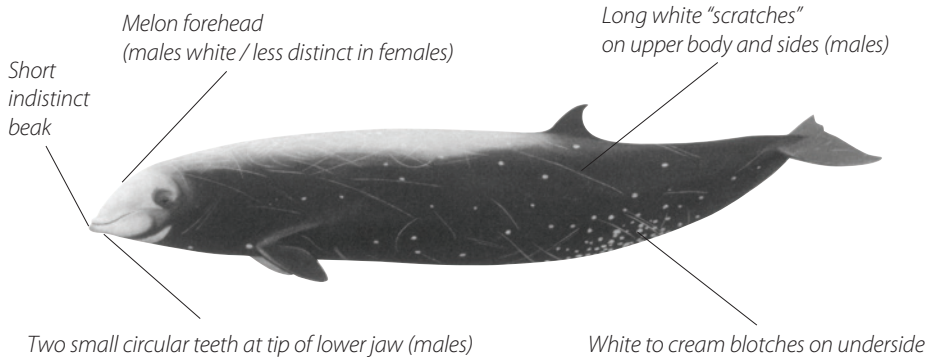


Maximum length: 2.7 m

Cuvier's beaked whale

Ziphius cavirostris

BCW

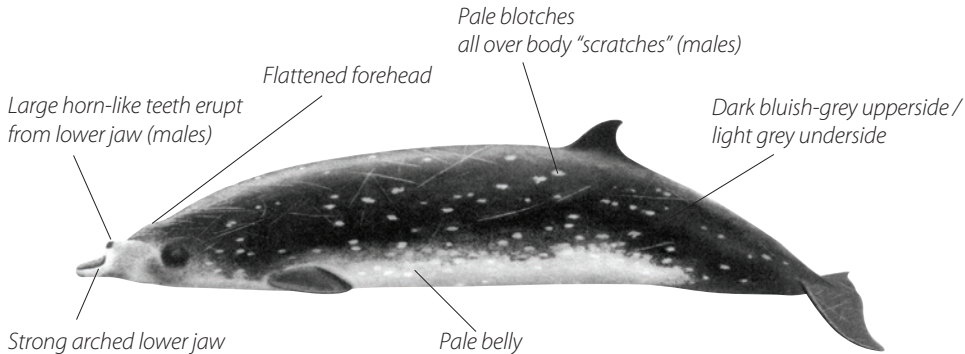


Maximum length: 7 m

Blainville's beaked whale

Mesoplodon densirostris

BBW

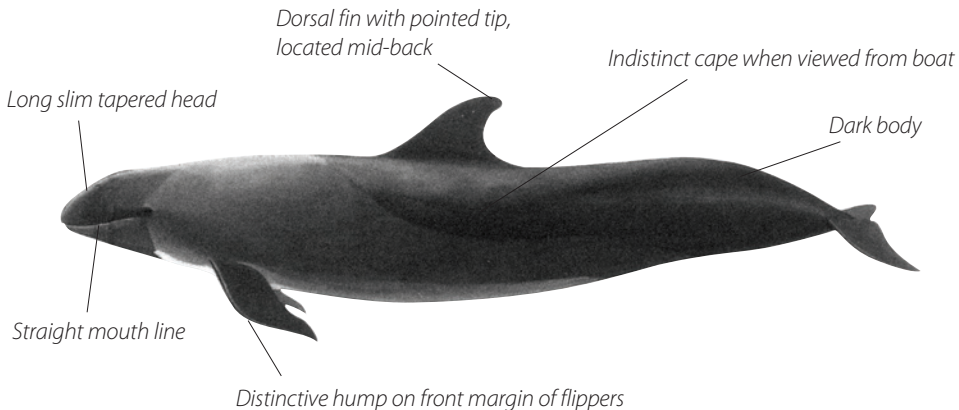


Maximum length: 5 m

False killer whale

Pseudorca crassidens

FAW

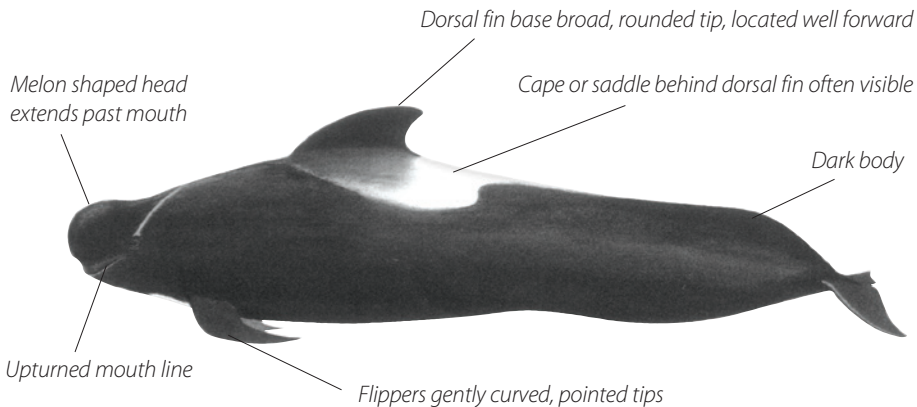


Maximum length: 6 m

Short-finned pilot whale

Globicephala macrorhynchus

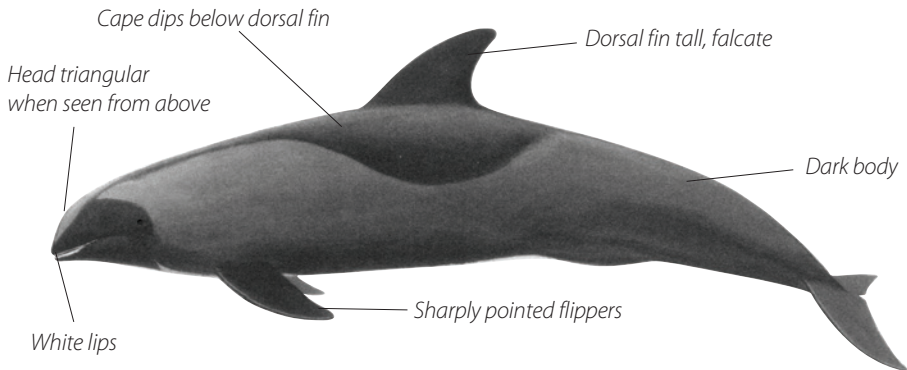
SHW



Maximum length: 6 m

Melon-headed whale

Peponocephala electra

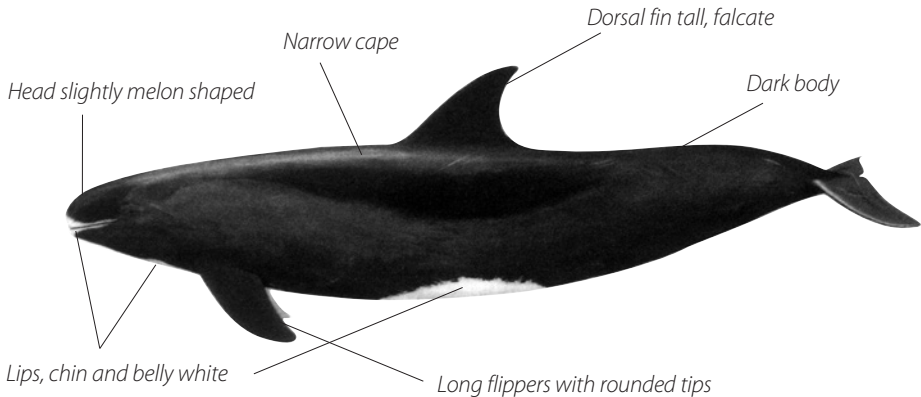


Maximum length: 2.7 m

Pygmy killer whale

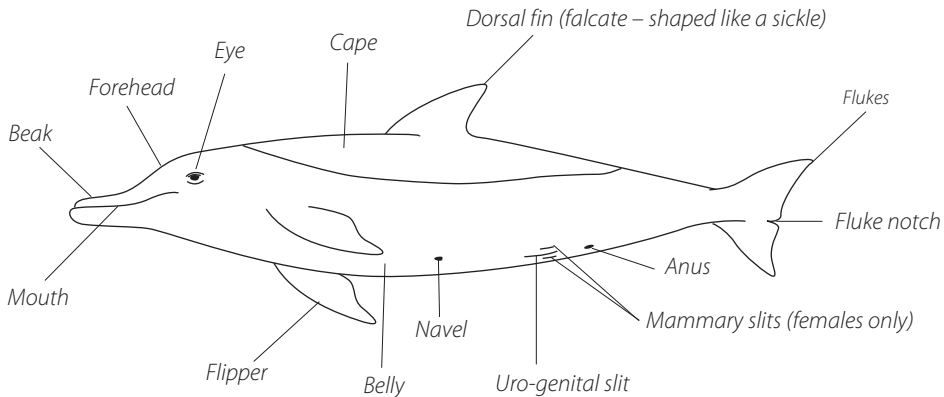
Feresa attenuata

KPW



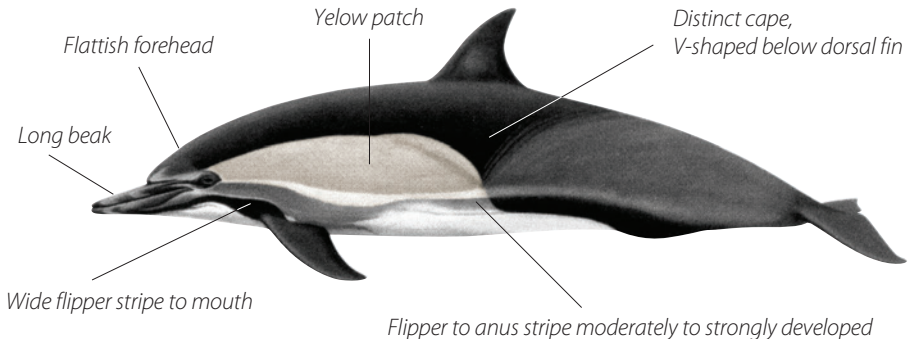
Maximum length: 3 m

Dolphins



Long-beaked common dolphin

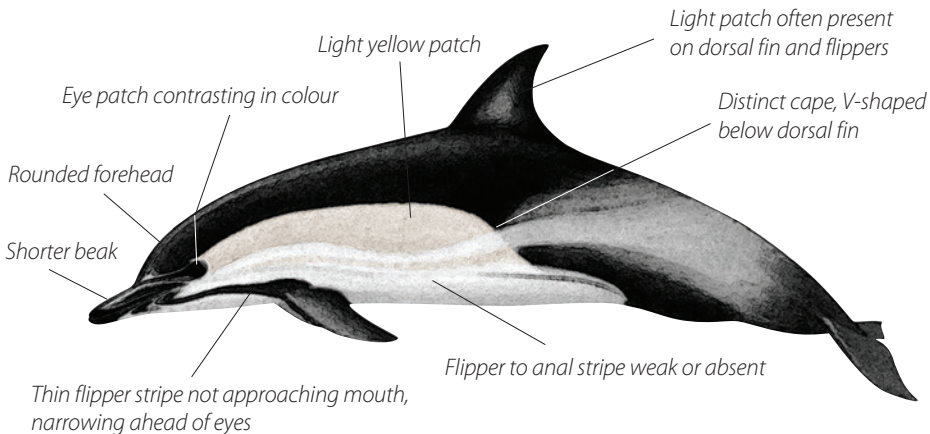
Delphinus capensis



Maximum length: 2.4 m

Short-beaked common dolphin

Delphinus delphis

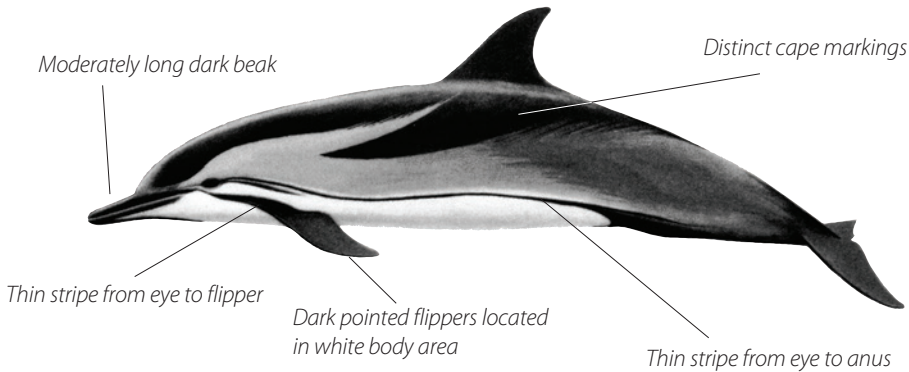


Maximum length: 2 m

Striped dolphin

Stenella coeruleoalba

DST

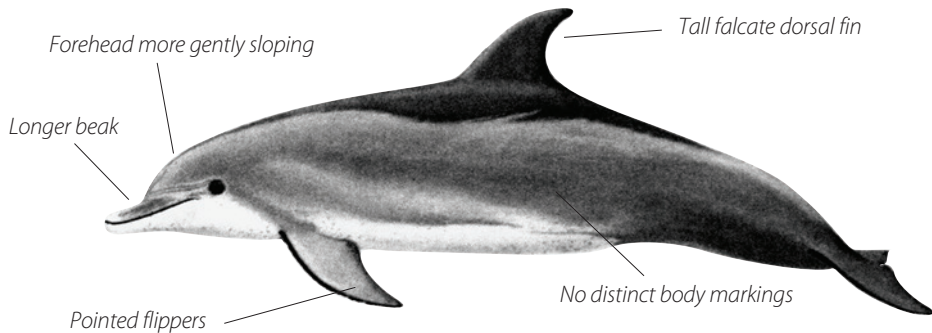


Maximum length: 2.6 m

Indo-Pacific bottlenose dolphin

Tursiops aduncus

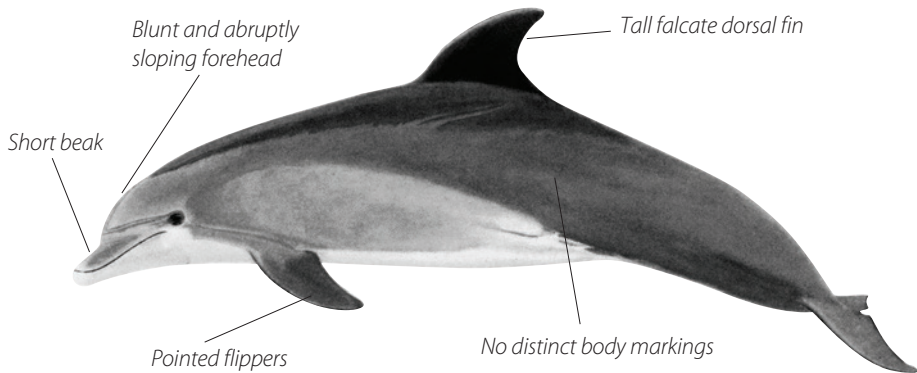
DBZ



Maximum length: 2.7 m

Common bottlenose dolphin

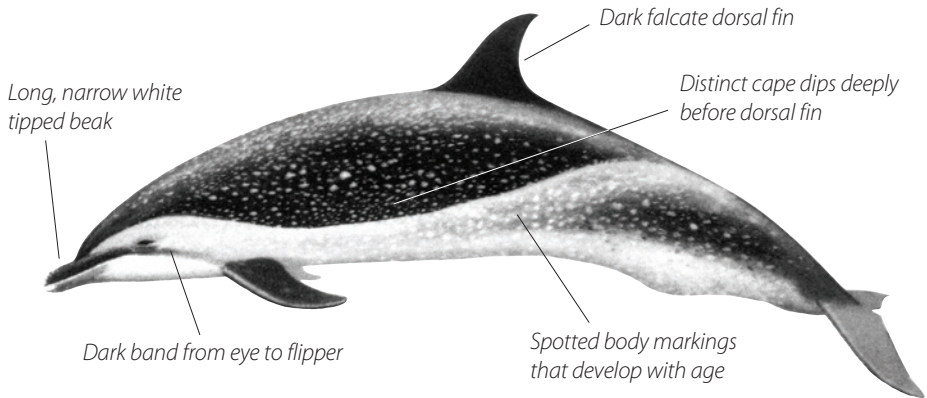
Tursiops truncatus



Maximum length: 3.8 m

Pantropical spotted dolphin

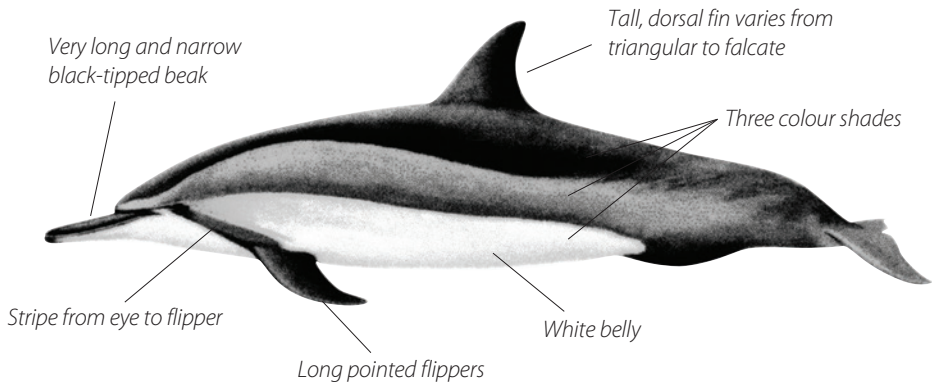
Stenella attenuata



Maximum length: 2.6 m

Spinner dolphin

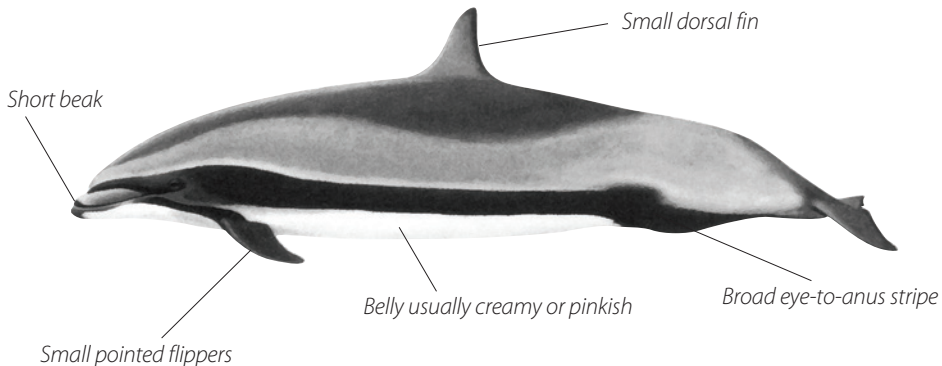
Stenella longirostris



Maximum length: 2.1 m

Fraser's dolphin

Lagenodelphis hosei

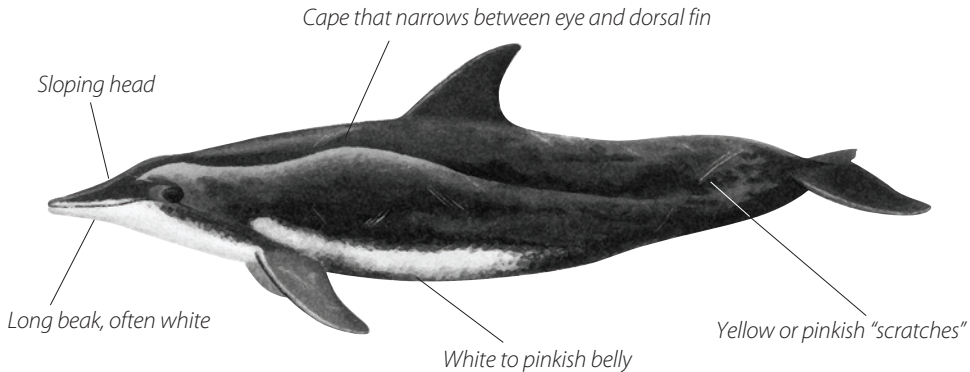


Maximum length: 2.7 m

Rough-toothed dolphin

Steno bredanensis

RTD

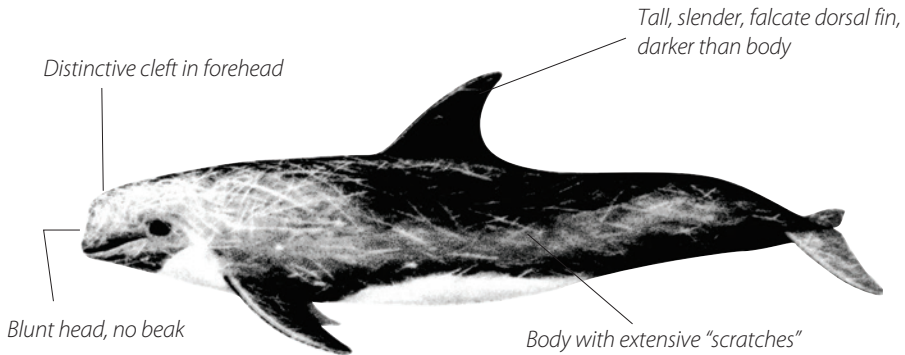


Maximum length: 2.8 m

Risso's dolphin

Grampus griseus

DRR

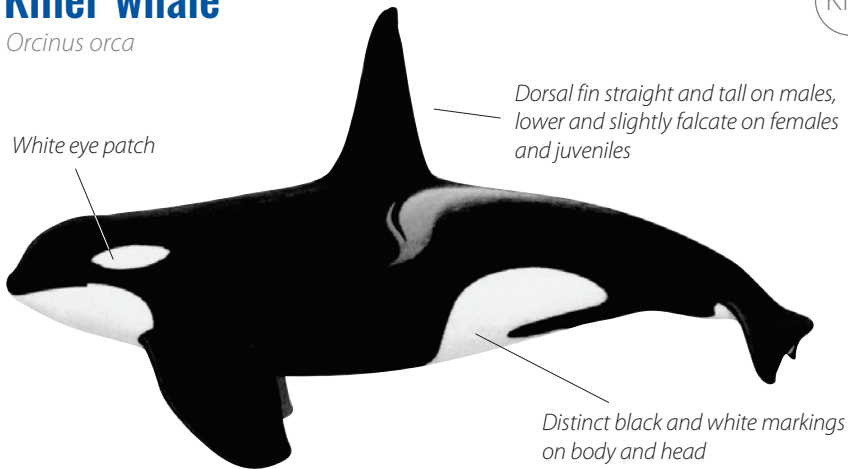


Maximum length: 4 m

Killer whale

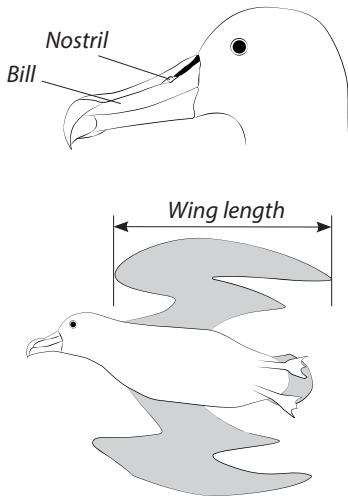
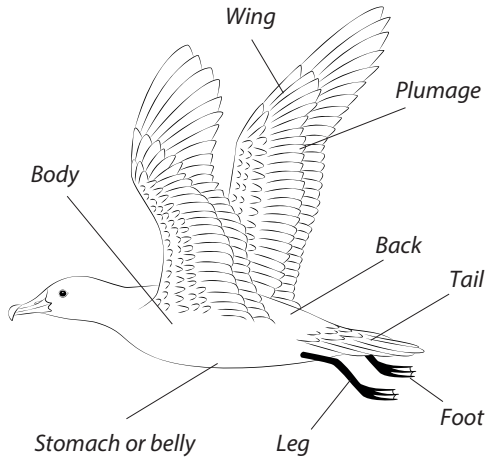
Orcinus orca

KIW



Maximum length: 9 m

Seabirds



Albatrosses

Diomedidae

Species in this family are very large birds with:

- *a wing length of \approx 50–70 cm*
- *a large hooked bill*
- *external nostrils at base of bill, one on each side*



Petrels and shearwaters

Procellariidae



Species in this family have:

- a wing length of 26–34 cm (shearwaters) or 33–57 cm (petrels)
- nostrils united in a single tube on top of the bill

Frigatebirds

Fregatidae



BXJ



Species in this family have:

- *a wing length of 52–57 cm*
- *a deeply forked tail*
- *a bill long, slender and deeply hooked*
- *nostrils as thin slits, on either side of the bill*

Boobies and gannets

Sulidae



Species in this family have:

- a wing length of $\approx 35\text{--}50$ cm
- a wedge-shaped tail
- a stout conical bill
- no nostrils; boobies and gannets breathe through the mouth

Gulls and terns

Laridae

LRD

Species in this family have:

- *a wing length of \approx 26–42 cm (gulls) or 24–29 cm (terns)*
- *nostrils as plain openings on either side of the bill*



Skuas

Stercorariidae



Species in this family have:

- *a wing length of $\approx 24\text{--}42$ cm*
- *nostrils as plain openings on either side of the bill*

Index

Albatrosses.....	31	Gannets.....	34	Pygmy sperm whale.....	10
<i>Balaenoptera acutorostrata</i>	6	<i>Globicephala macrorhynchus</i>	15	Risso's dolphin.....	28
<i>Balaenoptera borealis</i>	4	<i>Grampus griseus</i>	28	Rough-toothed dolphin.....	27
<i>Balaenoptera edeni</i>	5	Gulls.....	35	Seabirds.....	30
<i>Balaenoptera musculus</i>	2	Humpback whale.....	7	Sei whale.....	4
<i>Balaenoptera physalus</i>	3	Indo-Pacific bottlenose dolphin.....	22	Shearwaters.....	32
Blainville's beaked whale.....	13	Killer whale.....	29	Short-beaked common dolphin.....	20
Blue whale.....	2	<i>Kogia breviceps</i>	10	Short-finned pilot whale.....	15
Boobies.....	34	<i>Kogia sima</i>	11	Skuas.....	36
Bryde's whale.....	5	<i>Lagenodelphis hosei</i>	26	Sperm whale.....	9
Common bottlenose dolphin.....	23	Laridae.....	35	Spinner dolphin.....	25
Cuvier's beaked whale.....	12	Long-beaked common dolphin.....	19	<i>Stenella attenuata</i>	24
<i>Delphinus capensis</i>	19	Melon-headed whale.....	16	<i>Stenella coeruleoalba</i>	21
<i>Delphinus delphis</i>	20	<i>Megaptera novaeangliae</i>	7	<i>Stenella longirostris</i>	25
Diomedeidae.....	31	<i>Mesoplodon densirostris</i>	13	<i>Steno bredanensis</i>	27
Dwarf sperm whale.....	11	Minke whale.....	6	Stercorariidae.....	36
False killer whale.....	14	<i>Orcinus orca</i>	29	Striped Dolphin.....	21
<i>Feresa attenuata</i>	17	Pantropical spotted dolphin.....	24	Sulidae.....	34
Fin whale.....	3	<i>Peponocephala electra</i>	16	Terns.....	35
Fraser's dolphin.....	26	Petrels.....	32	<i>Tursiops aduncus</i>	22
Fregatidae.....	33	<i>Physeter macrocephalus</i>	9	<i>Tursiops truncatus</i>	23
Frigatebirds.....	33	Procellariidae.....	32	<i>Ziphius cavirostris</i>	12
		<i>Pseudorca crassidens</i>	14		
		Pygmy killer whale.....	17		



PACIFIC COMMUNITY
BP D5 • 98848 NOUMEA CEDEX
NEW CALEDONIA
Telephone: +687 26 20 00
Email: spc@spc.int
<http://www.spc.int/>



FFA

FORUM FISHERIES AGENCY
PO BOX 629 • HONIARA
SOLOMON ISLANDS
Telephone: +677 21 124
E-mail: info@ffa.int
<https://www.ffa.int/>

Prepared for publication at the Pacific Community headquarters, Noumea, New Caledonia, 2020
Printing funded by the Pacific Islands Forum Fisheries Agency, Honiara, Solomon Islands
Printed in South Korea by Ultimo Global Limited, New Zealand

