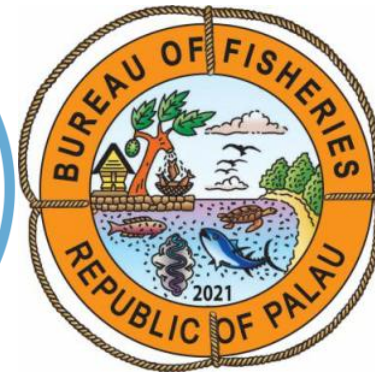


Pacific
Community
Communauté
du Pacifique

Republic of Palau



1. CLIMATE CHANGE

What national climate change activities or initiatives are underway to manage and adapt to the impacts of climate change on fisheries and aquaculture?

Guided by our strategic plan triple bottom line of People, Environment and Prosperity our current activities are geared towards food security, protecting biodiversity, and economic growth.

- Increase sustainable production of pelagic fisheries and aquaculture
- Integrated management of marine resources to increase resiliency to impacts of climate change
- Improve fisheries science to inform management measures
- Explore sustainable development of fisheries resources
- Looking into ways to improve or increase value of our coastal fisheries resources while not increasing production

Continued:

- Strengthening and improvement of our aFAD program
- Increase pelagic fishing efficiency while reducing cost and fuel through technology (eco-buoy aFAD's)
- Improving aquaculture production for priority species
- Facilitating the development of sustainable and economically viable aquaculture restoration programs
- Updating of marine resource laws, regulations, and policies

Planned:

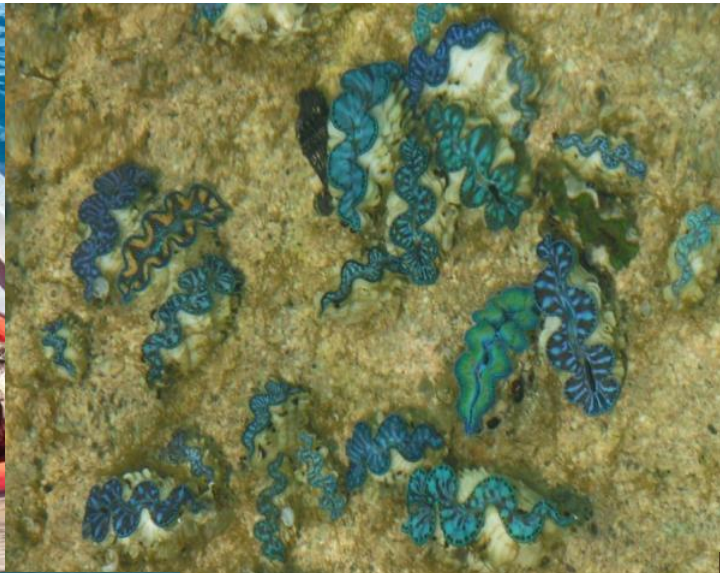
- Piloting conservation aquaculture program
- Explore fisheries value adding and marketing opportunities
- Continued development of aFAD network program
- Improvement of baitfish monitoring and harvest
- Aquaculture incubation program

2. COVID-19 IMPACTS

What are your national fisheries and aquaculture current and planned activities to reduce the residual impacts of COVID-19 on food security, livelihoods, and economic growth?

Current activities:

- Increased support to fishers
- Providing assistance on aFAD fishing and other fisheries diversification activities
- Exploring development of early warning systems
- Improving understanding of food systems and market dynamics
- Increasing aquaculture production





Palau National Anchored Fish Aggregating Device (aFAD) Network

