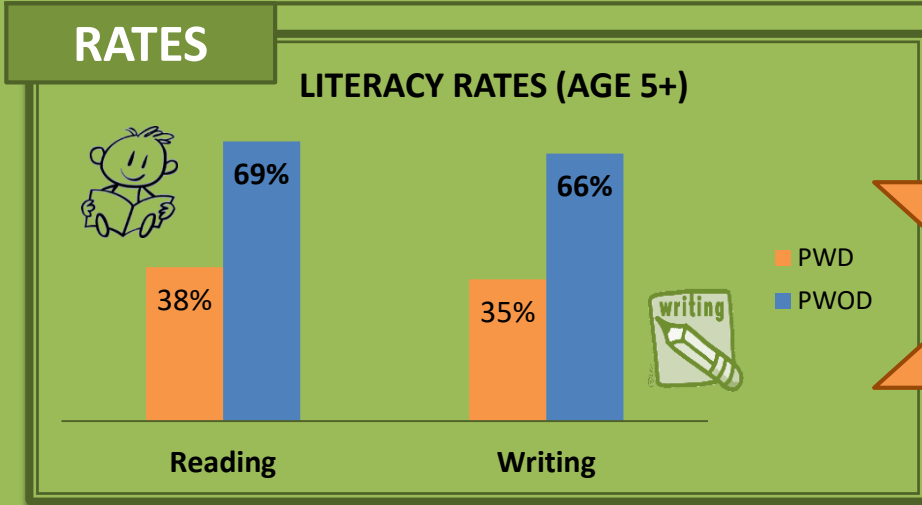


LITERACY

BY DISABILITY STATUS

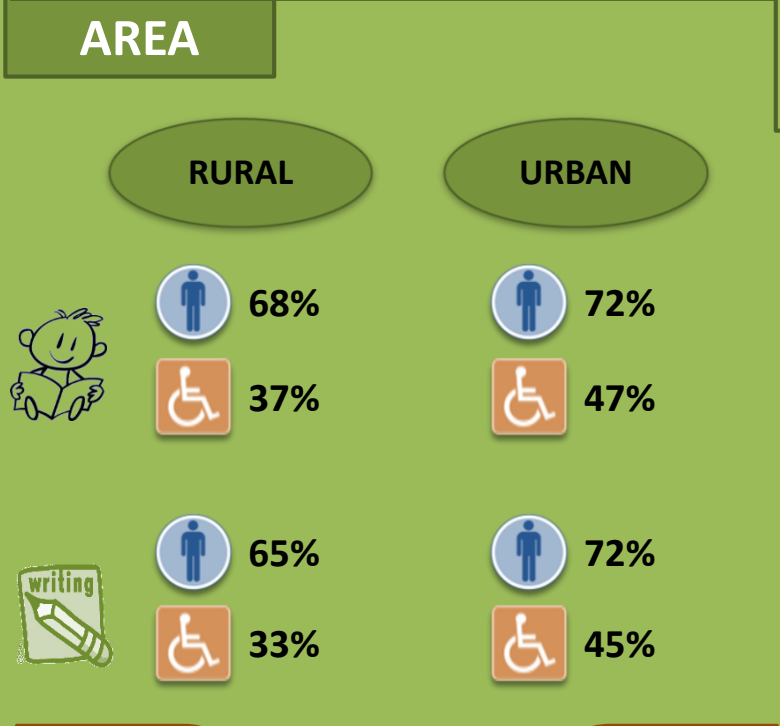
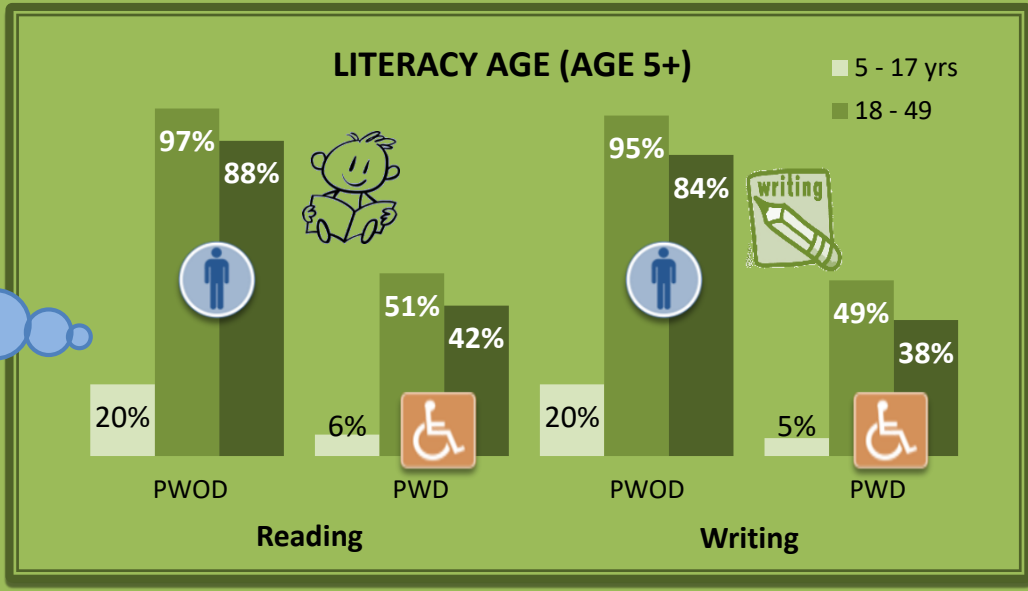
Article 24 – CRPD
PERSONS WITH DISABILITIES CAN ACCESS QUALITY EDUCATION, ON EQUAL BASIS WITH OTHERS IN THE COMMUNITIES



LITERACY RATES IS LOWER AMONG PERSONS WITH DISABILITIES (PWD)

AGE

People age 18+ have a high literacy rate for both groups. However, almost all are literate among People without disabilities (PWOD) while only half the total of PWD are.



LITERACY RATE IS LOW FOR PWD REGARDLESS OF WHERE THEY RESIDE

SEX

WOMEN WITH DISABILITIES ARE MORE DISADVANTAGED HAVING THE LOWEST LITERACY RATES

