

KIRIBATI – Adaptation

MR CHOI YEETING

Senior Policy Advisor on Climate Change & National Climate Change Coordinator

Office of Te Beretitenti (OB – Climate Change Unit)

Key Vulnerabilities

- **Low lying atolls**
- **Isolation**
- **Small land areas separated by vast expanse of ocean**
- **Highly concentrated population**
- **Cost of the provision of basic services**

- **Additional contributors:**
 - **The already high population density and growth rate on South Tarawa in the Gilbert Group continue to increase.**
 - **Sea-level rise poses the greatest threat to the people of Kiribati, given that the atolls are low lying and the majority of people live on the coast.**
 - **Kiribati's atoll islands provide only a small area of land for people to reside on. Where coastal areas have been highly affected by sea-level rise in association with other factors, people have relocated within the atoll itself, which is problematic given the scarcity of land in general and certain land tenure issues.**
 - **Available underground water sources are vulnerable and can be easily contaminated by saltwater intrusion, which will diminish water security and cause health and food security problems for the population.**
 - **Kiribati is highly dependent on revenue from fisheries; 81% of actual revenue in 2015 (2017 Budget Book), or approximately AUD 207.1 million, was derived from fishing licenses and other fishing revenue. Any changes in climate will have a direct negative impact on the marine ecosystem and fisheries stocks, which will result in reduced revenue for Kiribati.**

NATIONAL PRIORITIES – Climate Change

- **WATER and SANITATION**
 - **COASTAL PROTECTION**
 - **RENEWABLE ENERGY**
-
- **All of which were informed by Scientific and Technical Assessments (Integrated Vulnerability Assessments)**

Adaptation Priorities

- **National Level**
 - Kiribati Climate Change Policy
 - Kiribati Joint Implementation Plan
 - Kiribati Integrated Energy Roadmap
 - Kiribati Integrated Environment Policy
- **Local Government Level**
 - Island Strategic Development Plans

Kiribati
Integrated
Energy
Roadmap: 2017–2025



Adaptation related Policies and Plans in-country

- **National Level**

- **Kiribati Climate Change Policy**
- **Kiribati Joint Implementation Plan**
- **Kiribati Integrated Energy Roadmap**
- **Kiribati Integrated Environment Policy**

- **Local Government Level**

- **IVAs**
- **Island Strategic Development Plans**

Atoll specific adaptation initiatives

- **Mangrove planting (Coastal Protection)**
- **Long Term Coastal Security Strategy – in development (Coastal Protection)**
- **Temaiku Land and Urban Development Project (Land reclamation)**

- **Coral rehabilitation (Food Security & Coastal Protection)**
- **Soil enrichment projects (Food Security)**

- **Water quality monitoring (Health Security & Water Security)**
- **Desalination plants (Water security)**
- **Rainwater harvesting systems (Water Security)**

- **Island Disaster Committees (Governance & Disaster Coordination)**

Kiribati National Experts Group on CC and DRM (KNEG)

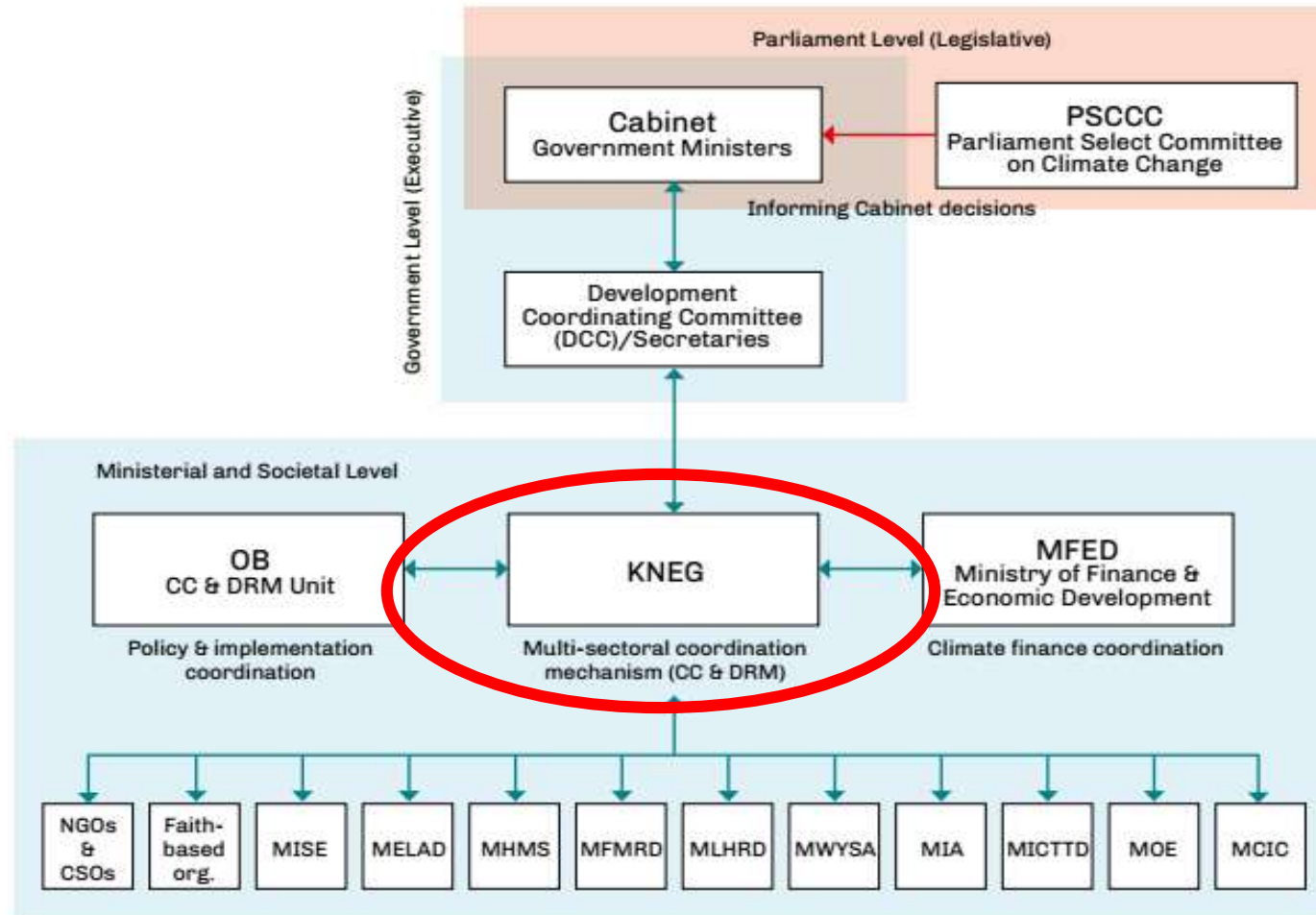


Figure 3: Institutional set-up and governance structure for climate change in Kiribati

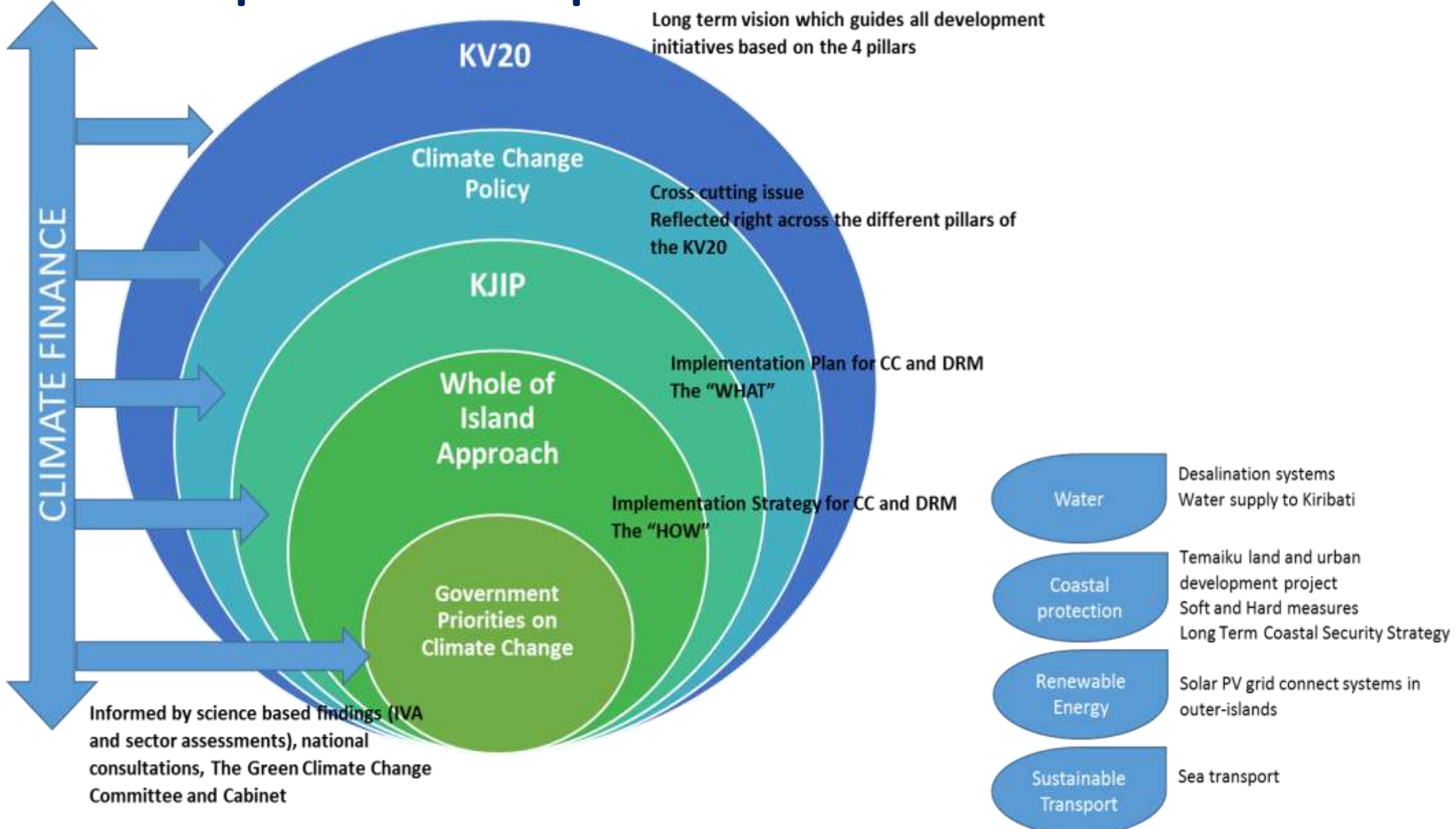
KNEG involvement

- **Adaptation Design and Planning process**
- **Prioritization**
- **Technical Assessments**
- **Implementation of Policies, Frameworks and Strategies (National level, Sectoral level, island level)**

The whole of Island Approach - Sub-national level



Current process in place



6. Success and Challenges

Successes	Challenges
Multi-sectoral engagement (national)	Coordination at different levels
Capacity building (national)	Capacity building required in local governments
Informed decision making process	Financing for action/implementation
Trust in the process (national level)	Trust in the process (local government level)

Way forward for Kiribati

- IVAs
- Island Strategic Plans
- Supporting existing processes and mechanisms in place
- Reviewing Strategies to be informed by available science (Projections for adaptation)
- Data Management System (KIVA Database)
- M&E Framework for the KJIP

- Project proposal development (3 Priorities)
 - GCF / ADB/ WB – Water and Sanitation
 - GCF – Coastal Protection
 - CIF – Renewable Energy