

# Pacific Health Governance Research Network: Workshop Two

20 – 22 February 2019 | Tanoa International Hotel, Nadi



## Welcome to the Pacific Health Governance Research Network Workshop Two

The Pacific Health Governance Research Network (PHGRN) is proud to welcome you to its second Workshop.

Workshop Two will once again provide opportunity for attendees to discuss research partnerships and projects with counterparts and interested stakeholders. In addition, it will build upon the work of mapping research needs started in Workshop One with more focused discussions on the five major research themes. Workshop Two will also aim to generate concept notes, research groups, and outline agreements toward funding proposals and collaborative actions. In response to feedback from Workshop One, the second event will be longer and aims to more closely involve policy makers, multilaterals and donors in discussion. We look forward to facilitating exciting collaborations between researchers and practitioners who are focused on addressing the health challenges in the region.

As we did at the first workshop, we are using a non-conventional workshop format, designed to allow our attendees to engage with each other to explore issues in depth, and to develop new and exciting partnerships. Presenters and facilitators are both Pacific and international researchers and practitioners, and breakout sessions use a modified talanoa method to facilitate hearing from all our attendees to learn from their knowledge and experience.

We hope you enjoy your time with us here in Nadi and that your time here will help in the establishment of new initiatives and working relationships.

## Pacific Health Governance Research Network: Workshop Two Program

### Tanoa International Hotel, Votualevu Road Nadi

**Wednesday 20th February 2019**

**5:00pm – 7:00pm**

Tanoa Int. Hotel  
Room TBC

#### **Workshop Registration and Cocktail Reception**

*An opportunity to network with fellow delegates and hear from the first guest speaker for the program.*

Registration open from 4:00pm event to commence at 5:00pm.

Welcome and opening remarks delivered by VC FNU Prof Nigel Healy

Keynote address: Dr Audrey Aumua, (Deputy Director-General of the Pacific Community)

Evening MC: Prof Donald Wilson and Dr Owain Williams

**Thursday 21st February 2019**

**7.30am – 8.30am**

**Registration**

**8.30am – 9.30am**

**Welcome Session**

Tanoa Int. Hotel  
Room TBC

Facilitator: Dr Owain Williams and Dr Paula Vivili  
Opening Prayer: Dr Isimeli Tukana, MHMS, Fiji  
Welcome Address: Dr Colin Tukuitonga  
Overview of Workshop Structure: Dr Owain Williams  
Keynote Address: Hon Dr Ifereimi Waqainabete (Minister for Health and Medical Services Fiji)

**9.30am – 10.30am**

**Plenary Session: Climate Change and Health**

Tanoa Int. Hotel  
Room TBC

Facilitator Mr Vimal Deo, Ministry of Health and Medical Services (MHMS), Fiji

Presentations:

- Dr Matt MacDonald (The University of Queensland) 'Climate Change, Natural Disasters and Health: New Agendas'
- Dr Owain Williams (The University of Queensland) 'Climate Change and Mental Health in the Pacific'
- Dr Nasir Hassan (WHO Division of Pacific Technical Support)

**10:30am – 12:30 pm**

**Parallel Breakout Sessions: Climate Change and Health**

Tanoa Int. Hotel  
Rooms TBC

- Extreme Weather Events, Natural Disasters, Trauma and Mental Illness. Facilitator Asst. Prof Odile Chang, FNU
- Infectious Disease. Facilitator: Dr Sala Saketa, SPC
- Adaptation for Health Systems for Extreme Weather Events and Natural Disasters. Facilitator: Mr Anthony Blake, SPC
- Food Security, Health and Climate Change. Facilitator Mrs Karen Fukofuka, NCD Adviser – Food Security, SPC

**12.30pm – 1.30pm**

**Lunch**

**1.30pm – 2.30pm**

**Plenary Session: Health Systems and Universal Health Coverage**

Tanoa Int. Hotel  
Room TBC

Facilitator: Mr Sunia Soakai, SPC

Presentations:

- Dr Peter Hill (University of Queensland) 'Mapping political economy of UHC in the Pacific'.
- Dr Donald Wilson (Fiji National University)

**2.45pm – 5.00pm**

**Parallel Breakout Sessions: Health Systems and UHC**

Tanoa Int. Hotel  
Rooms TBC

- Health Workforce Capacity and Training Issues. Facilitator: Dr Berlin Kafoa, SPC
- Governance and Policy, Resources and Planning. Facilitator: Dr Wayne Irava, FNU
- Socio-cultural and gender Barriers to Access. Facilitator Ms Kuiniselani Toelupe Tago, SPC

## Friday 22nd February 2019

**8.30am – 9.30am**

Tanoa Int. Hotel  
Room TBC

### **Plenary Session: Non-Communicable Diseases/Food Systems and the Pacific**

Facilitator: Dr Si Thu Win, SPC

Presentations:

- Dr Fiona Charlson and Ms Lana Elliot (University of Queensland and Queensland University of Technology)
- Professor Bill Bellotti (University of Queensland) 'Food and nutrition security in The Pacific: Learning from past SPC experiences'
- Dr Isimeli Tukana (National Wellness Centre, Fiji)

**10.00am – 12.45pm**

Tanoa Int. Hotel  
Rooms TBC

### **Parallel Breakout Session: NCDs/Food Systems and the Pacific**

- Regulation and Policy, Regional, National and Multilateral Agendas. Facilitator: Dr Wendy Snowdon, WHO
- Food Systems and NCDs. Facilitator: Dr Gade Waqa, FNU
- Alcohol and Tobacco Control. Facilitator: Dr Ada Moadsiri, WHO
- Service Capacities for Treatment of NCDs. Facilitator: Dr Isimeli Tukana, MHMS, Fiji

**12.45pm – 1.45pm**

### **Lunch**

**1.30pm – 2.45pm**

Tanoa Int. Hotel  
Room TBC

### **Plenary Session: Health Security and WASH**

Facilitator: Dr Eric Rafai, MHMS, Fiji

Presentations:

- Health Security: Associate Professor Linda Selvey (University of Queensland) 'AMR, Health Security and the Pacific.'
- WASH: Dr Nina Hall (The University of Queensland) 'Enhancing health through safe and sustainable water, sanitation and hygiene in the Pacific'
- Dr Josephine Herman (Secretary, Fijian Ministry of Health)

### Friday 22nd February 2019 Continued

**2.45pm – 4.45pm**

Tanoa Int. Hotel  
Rooms TBC

**Parallel Breakout Sessions:**

- Health Security and WASH
- Water Security. Facilitator: Ms Rhonda Robinson, SPC
- Regional Health Security Frameworks / IHR. Facilitator: Dr Angela Merianos, WHO
- Policy and Regulations. Facilitator: Prof Paul Jagals, FNU

**5.00pm – 5.45pm**

Tanoa Int. Hotel  
Room TBC

**Plenary Session: Reporting Back and Closing**

- Reporting Back
- Facilitators will report back and draw conclusions on research needs and capacities from each of the thematic breakout sessions.
- Workshop closing remarks: Dr Owain Williams
- Closing Address: Dr Colin Tukuitonga
- Closing Prayer: Prof Donald Wilson

**6.00pm – 7.30pm**

Tanoa Int. Hotel  
Rooms TBC

**Parallel Training Sessions**

- How to Write Tenders and Grants: Dr Michelle Dunn
- How to Write a Policy Brief: Professor Karen Hussey
- Research ethics in the field: Research for Development Impact Network

## Co-Hosts



### Dr Colin Tukuitonga

#### Director-General of the Pacific Community (SPC)

The Pacific Community (SPC) is the principal scientific and technical organisation in the Pacific region, supporting development since 1947. It is a unique international development organisation owned and governed by its 26 country and territory members.

Dr Colin Tukuitonga has served as its Director-General since January 2014. He is based at the organisation's headquarters in Noumea, New Caledonia.

Dr Tukuitonga, from the Pacific Island of Niue, was formerly the Director of SPC's Public Health Division. He was a member of an Independent External Review of SPC in 2012.

His previous roles include: Chief Executive Officer of the New Zealand Government's Ministry of Pacific Island Affairs; Associate Professor of Public Health and Head of Pacific and International Health at the University of Auckland; Director of Public Health, New Zealand Ministry of Health; and Head of Surveillance and Prevention of Chronic Non-Communicable Diseases at the World Health Organization, Switzerland.

Dr Tukuitonga has also served in various leadership and management roles, including at the Fiji School of Medicine, the Auckland District Health Board, Northern Regional Health Authority (Auckland), University of Auckland and the Health Research Council of New Zealand. He is a former Board member of the Pacific Cooperation Foundation.

Additionally, Dr Tukuitonga was a commissioner for the World Health Organization (WHO) global Commission on Ending Childhood Obesity from 2014 until its work concluded in early 2016.

Dr Tukuitonga is a Founding Member of the Niue Arts and Culture Festival, Pacific Language Weeks in New Zealand, and of the Leadership Development Programme for Pacific civil servants in New Zealand. He is a member of the Pacific Research panel for the Performance-Based Research Fund 2018 Quality Evaluation.



## Dr Owain Williams

### School of Public Health UQ

Dr Owain Williams is a Senior Research Fellow at the University of Queensland Public Health, and is former Fellow of the Centre for Health and International Relations, the Department of International Politics at Aberystwyth University, United Kingdom. He is an expert on the politics and political economy of health policy, and on intellectual property rights and access to medicines. He worked for the UNDP as a consultant on this area in 2014. He has published on access to medicines and global health governance, and new actors in health. His work includes, with Adrian Kay (eds.) *Global Health Governance: Crisis, Institutions and Political Economy* (Palgrave 2009); *Partnerships and Foundations in Global Health Governance* with Simon Rushton (eds.) (Palgrave 2011), *New Political Economy of Pharmaceuticals in the Global South* (Palgrave 2013); and *The Transformation of Global Health Governance* (Palgrave 2014). He manages a range of projects on testing with the Queensland Chair in HIV and STIs and works in the broad area of global health governance from a platform of community engagement. He is convener of the Pacific Health Governance workshop and Research Network.



## Associate Professor Donald Wilson

### Head of the School of Public Health and Primary Care (SPHPC) at the College of Medicine, Nursing & Health Sciences (CMNHS), Fiji National University (FNU)

Dr Donald Wilson is Associate Professor of Epidemiology & Biostatistics at the Fiji National University (FNU) and is Head of the School of Public Health and Primary Care (SPHPC) at the College of Medicine, Nursing & Health Sciences (CMNHS) of FNU. He practiced general medicine and public health for the Ministry of Health Fiji for several years before leaving for Japan for post-graduate studies. He spent 12 years in Japan, during which period he completed his PhD degree in epidemiology, with a focus in environmental and occupational epidemiology.

## Presenters



### **Dr Audrey Aumua**

#### **Deputy Director General of the Pacific Community (SPC)**

Dr Audrey Aumua is the Deputy Director General (Suva) of the Pacific Community (SPC). In her role, she has oversight for the Maritime, Shipping, Geo Sciences, Energy, Land Resources Development and the Social Development programming of SPC.

Prior to joining SPC in 2016, she was the World Health Organisation (WHO) Resident Representative, in Honiara, Solomon Islands and before that was the director of the Knowledge and Innovation Hub at the University of Queensland. Dr Aumua has extensive experience in research, policy development and management in the health and education sectors, in New Zealand, Australia and has worked in sustainable development the Pacific region.



### **Hon Dr Ifereimi Waqainabete**

#### **Minister for Health and Medical Services, Fiji**

Hon Dr Ifereimi Waqainabete is the new Minister for Health and Medical Services in Fiji. Prior to entering politics Hon Dr Waqainabete was Associate Professor and Head of Surgery at the Fiji National University (FNU) and consultant surgeon at the Colonial War Memorial Hospital (CWMH). He is also the current President of the Fiji Medical Association (FMA), President of the Pacific Island Surgeons Association (PISA) and Chairman of Fiji Medicinal Board.



### **Dr Nasir Hassan**

#### **Environmental Health Specialist, WHO Division of Pacific Technical Support**

Dr Nasir Hassan is the Environmental Health Specialist at the WHO-Division of Pacific Technical Support (DPS), based in Suva Fiji. Prior to this, he was the Team Coordinator, Health and Environment, WHO-Western Pacific Regional Office in Manila Philippines and Team Coordinator, Environmental Health and NCD at the WHO-Cambodia Office and was also assisting Environmental Health programme for Lao PDR. In the WHO Suva Office, Dr Hassan is responsible for the WHO-Health, Environment and Climate Change Programme in the Pacific.





## Associate Professor Matt McDonald

### School of Political Science and International Studies, UQ

Matt McDonald is Associate Professor of International Relations in the School of Political Science and International Studies at UQ. His research is in the area of critical approaches to security, and in particular the relationship between security and environmental change. His recent work exploring the regional security implications of climate change is of direct relevance to this research area. He is the author of *Security, the Environment and Emancipation* (Routledge, 2012) and co-author of *Ethics and Global Security* (Routledge, 2014), and is co-editor of *Australian Journal of Politics and History*.



## Associate Professor Peter Hill

### School of Public Health UQ

Peter Hill is Associate Professor, Global Health Systems in the School of Public Health at The University of Queensland. His research and teaching interests currently focus on global health governance, health in the Sustainable Development Goals, health systems strengthening and Indigenous health in Australia. He is a Public Health Physician by training and a member of the National Council of the Royal Australasian Faculty of Public Health Medicine.

He completed his PhD at the Vrije Universiteit Brussels, examining the emergence of global health policy and its translation into country level policies and program. He has been principal investigator in a series of projects that have examined the development of the health goal in the Sustainable Development Goals (SDGs), the uptake of the Indigenous Burden of Disease Research findings into policy in Australia, and health services provision in fragile and conflict-affected states. He has undertaken research in Fiji examining governance for leptospirosis control, and the reporting demands of the SDGs. Given the depth of his scholarship—both in teaching and research—on the SDGs and their importance for the Pacific, this is likely to be the focus of his future collaborations with SPC.

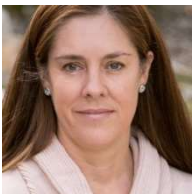
He has extensive research and health systems experience across West Africa, South East Asia and the Pacific – with particular focus on Nigeria, Cambodia, Vietnam, Papua New Guinea and Aboriginal Australia, undertaking consultancies for AusAID, GIZ, Australian Red Cross, the GAVI Alliance, the Global Fund to Fight AIDS, TB and Malaria and the World Health Organization.



## Dr Isimeli Tukana

### Director of the National Wellness Centre, Fiji

Dr Tukana is the first director of the newly established National Wellness Centre at the Ministry of Health and Medical Services Fiji. The Centre is the result of the merge of the National Centre for Health Promotion and the Non Communicable Disease (NCD) Prevention and Control Unit. Wellness Fiji is a lifestyle/behavioural based life course approach in Fiji's Primary Health Care system. Prior to taking up this role, Dr Tukana was the National Advisor NCD Prevention and Control. He is the president of the Pacific Public Health Association as well as patron of Counterstroke Fiji.



## Dr Fiona Charlson

### Queensland Centre for Mental Health Research

Dr Fiona Charlson is a psychiatric epidemiology and health services researcher with strong commitment to and experience in the development of mental health services, systems and policy in low- and middle-income countries.

Dr Charlson currently leads the Queensland Centre for Mental Health Research's Mental Health and Development Group where she holds ongoing collaborations with and provides technical expertise to national and international partners, including: the World Health Organization, Fiji National University, Clinton Health Access Initiative, the Institute for Health Metrics and Evaluation, US National Institutes of Health, Alan Flisher Centre for Public Mental Health (University of Cape Town), the China-India Alliance for Mental Health, and various other low- and middle-income country partners. She is also a core member of the Mental Disorders and Illicit Drug Use Research Group for the Global Burden of Disease Studies.

A current flagship project is a collaboration with the World Health Organisation to develop protocols for measuring the progress of mental health-related Sustainable Development Goals.

Dr Charlson has completed a Masters in International Public Health and a PhD on the epidemiological modelling of mental disorders in conflict-affected populations. Her original training was as a pharmacist and she has 18 years' experience, including work as a community pharmacist in Australia and New Zealand, project pharmacist for Medecins Sans Frontieres' in West Africa, and a referral pharmacist for Medecins Sans Frontieres' 'Campaign for Access to Essential Medicines' in Geneva, Switzerland.



## Ms Lana Elliott

### School of Public Health and Social Work QUT

Ms Lana Elliott is a lecturer in the School of Public Health and Social Work, Faculty of Health, Queensland University of Technology. Ms Elliott completed her Masters in International Public Health at The University of Sydney, after having completed a Bachelor of Arts (Global) majoring in Human Rights and International Studies at Monash University. Lana has worked in various capacities in health management, public health & development in various contexts both in Australia and abroad, informing her research interest in the impact of policy on community health outcomes.

Since joining QUT, she has focused on the design and delivery of health planning & evaluation and global health policy courses that reflect and are informed by her research and experience.



## Professor Bill Bellotti

### Global Change Institute UQ

Professor Bill Bellotti has more than 30 years' experience in leading agricultural production system research in southern Australia, western China, and eastern India.

His expertise includes agronomy, climate variability and change, farming systems and integrated approaches to food systems. Professor Bellotti's research in China and India has focussed on sustainability and food security, and more recently on the linkages between diversification of cropping systems, dietary diversity and empowerment of women farmers.

His research interests include the application of Life Cycle Assessment approaches to Australian food systems. This interest includes the development of concepts such as sustainable diets and food footprints. At the Global Change Institute he looks forward to engaging the diversity of views and expertise across the University of Queensland and other stakeholders to promote healthier, sustainable and equitable food systems.



## Dr Josephine Herman

### Secretary for the Cook Islands Ministry of Health

Dr Herman is the Secretary for the Cook Islands Ministry of Health and is a public health physician and general practitioner. Prior to this role, she worked as a Medical Officer of Health with the Auckland Regional Public Health Service (ARPHS) February 2017- April 2018, and was clinical lead for the Measles Mumps Rubella (MMR) portfolio. During this period ARPHS received increased notifications of mumps and dengue fever cases, predominantly originating from concurrent outbreaks in the Pacific islands of Fiji (mumps), Tonga (mumps), and Samoa (dengue). Dr Herman is keen to support the introduction of the MMR vaccine to the whole of the Pacific region, as well as to implement environmental measures to address ongoing mosquito-borne illnesses.



## Associate Professor Linda Selvey

### School of Public Health UQ

Associate Professor Linda Selvey joined the School of Public Health as a Teaching and Research Academic in January 2017. She is a public health physician and her main research area is in the field infectious diseases epidemiology and control. Her research interests relate to implementation of responses to diverse health challenges including: climate change; food borne disease; sexual health; blood borne viruses and antimicrobial resistance.

A/Prof Selvey formerly worked for Queensland Health, starting there as Director of Communicable Diseases Branch in December 1996 and in 2005, was then promoted to Executive Director, Population Health Queensland. She remained in this position until moving to Sydney where she took up the position of CEO of Greenpeace Australia Pacific. A/Prof Selvey then moved to Perth to join her partner and worked at Curtin University, School of Public Health, before joining The University of Queensland.



## Dr Nina Hall

### UQ School of Public Health

Dr Nina Lansbury Hall is a researcher on environmental health within The University of Queensland's School of Public Health. She conducts research and teaching on responses to complex issues around the sustainable and integrated development, including management and use of water and energy resources with social, environmental and economic considerations. This includes communicating water, renewable energy and health-relevant research findings into policy outcomes with stakeholders, which covers research on community engagement, behaviour change and policy analysis.

Her current research at UQ examines the implementation challenges and opportunities for the UN Sustainable Development Goals; and sustainable provision and evaluation of water, sanitation and hygiene in development, including in remote Indigenous communities on both mainland Australia and in the Torres Strait. She is also investigating the impacts of climate change on human and environmental health. This involves a role as lead author on the Intergovernmental Panel on Climate Change (WG II, AR6).

Nina has worked on environmental and social sustainability issues in research and non-government organisations and she is motivated by an aim to create and contribute to high-impact research that responds to complex or 'wicked' environmental and social challenges in Australia and globally. Within the research sector, she was previously a senior research scientist at CSIRO, manager of the Sustainable Water program at The University of Queensland, and senior research consultant at the Institute for Sustainable Futures, UTS. Within the non-government sector, she was the director of the Climate Action Network Australia and research coordinator at the Mineral Policy Institute.

## About the hosts



### Fiji National University

Fiji National University (FNU) was formally established in 2010, however it has a long history of relevant education dating back to the origins of its component Colleges, through institutions that were established according to national needs and aspirations as these developed.

FNU now has campuses and centres at 33 locations throughout the country, running a total of approximately 30 different courses and programmes with a staff complement of more than 1800 and in January 2012, hitting a record student enrolment of more than 20, 000. As a new and dynamic institution, yet one with an illustrious history within its component parts, FNU is daily developing, innovating and expanding to provide Fiji and the region with the education and training that they most need.



### The University of Queensland

The University of Queensland (UQ) is one of Australia's leading research and teaching institutions. We strive for excellence through the creation, preservation, transfer and application of knowledge. For more than a century, we have educated and worked with outstanding people to deliver knowledge leadership for a better world.

UQ's global reach involves 324 international collaborative research projects with partners from 40 countries; 670 participants from 34 countries in international development capacity building projects and short courses; and over 430 international partner institutions, including 73 within the southeast Asia-Pacific region.

Since 2011 there have been 23 UQ research projects relating to Melanesia working collaboratively on areas as diverse as agriculture, resources/mining, education and health. We publish extensively with our country partners. A number of schools and faculties have programs of collaboration in the region including projects focused on South Pacific law; peace-building; gender and equality and food systems.

The Pacific Health Governance Research Network is convened under the School of Public Health.



## The Pacific Community (SPC)

The Pacific Community (SPC), previously Secretariat of the Pacific Community, is the principal scientific and technical organisation supporting development in the Pacific region.

It is an international organisation established by treaty (the Canberra Agreement) in 1947 and is owned and governed by its 26 members including all 22 Pacific Island countries and territories. Its working languages are English and French.

The Pacific Community's headquarters are in Noumea, New Caledonia, and it has regional offices in Fiji and Federated States of Micronesia, a country office in Solomon Islands, and field staff in other countries and territories. It is one of nine member agencies of the Council of Regional Organisations of the Pacific.

The SPC's mission is to support the well-being of Pacific people through the effective and innovative application of science and knowledge, guided by a deep understanding of Pacific Island contexts and cultures. For more than 68 years, through its secretariat, the Pacific Community has been providing the Pacific Islands region with essential scientific and technical advice and services. To achieve genuine and lasting improvement in people's lives, its focus is on working with all members, at all levels, to deliver integrated services that advance their progress towards addressing their development challenges and achieving their aspirations.

## Our sponsor



## Research for Development Impact Network

The Research for Development (RDI) Network is a network of practitioners, researchers and evaluators working in international development. The Network exists to foster collaboration between Australian universities and NGOs in order to promote high quality and ethical development research, translated as evidence and applied to effective policy and practice. Working in close partnership with the Australian Council for International Development (ACFID), the Network functions as a key cross-sectoral platform for shared learning and action.

# Logistics

## Venue and Transport

The workshop will be held at the Tanoa International Hotel. The Tanoa International Hotel is 3 km from Nadi International Airport and 6km from Nadi town.

## Transport

Transport to and from airport and Tanoa International Hotel can be undertaken by Taxi at a cost of circa 3 – 5 Fijian dollars, or is a short 5 minute walk.

Access to Nadi town by taxi and the beachfront is also by taxi at a cost of between 8 – 10 Fijian dollars.

Taxis are plentiful and can be found in most main streets and outside hotels and other public buildings.

## Parking

Parking availability at the hotel should be arranged with the hotel.

## Accommodation

Accommodation will be arranged for delegates by SPC at the Tanoa International Hotel. Overflow accommodation is available. There are many other hotel options both close to the Airport and Nadi itself.

## Catering

Please advise us of any dietary requirements upon registration or via email.

## Safety and Medical

In case of emergency call 911 from any phone.

## Contact

Questions regarding the content of the workshop contact: [pacifichealthgovernance@gmail.com](mailto:pacifichealthgovernance@gmail.com)

Logistical support can be obtained via the SPC contact Paula Vivili.

## Bookings

Eventbrite: <https://www.eventbrite.com.au/e/pacific-health-governance-research-network-workshop-two-tickets-47492233549>